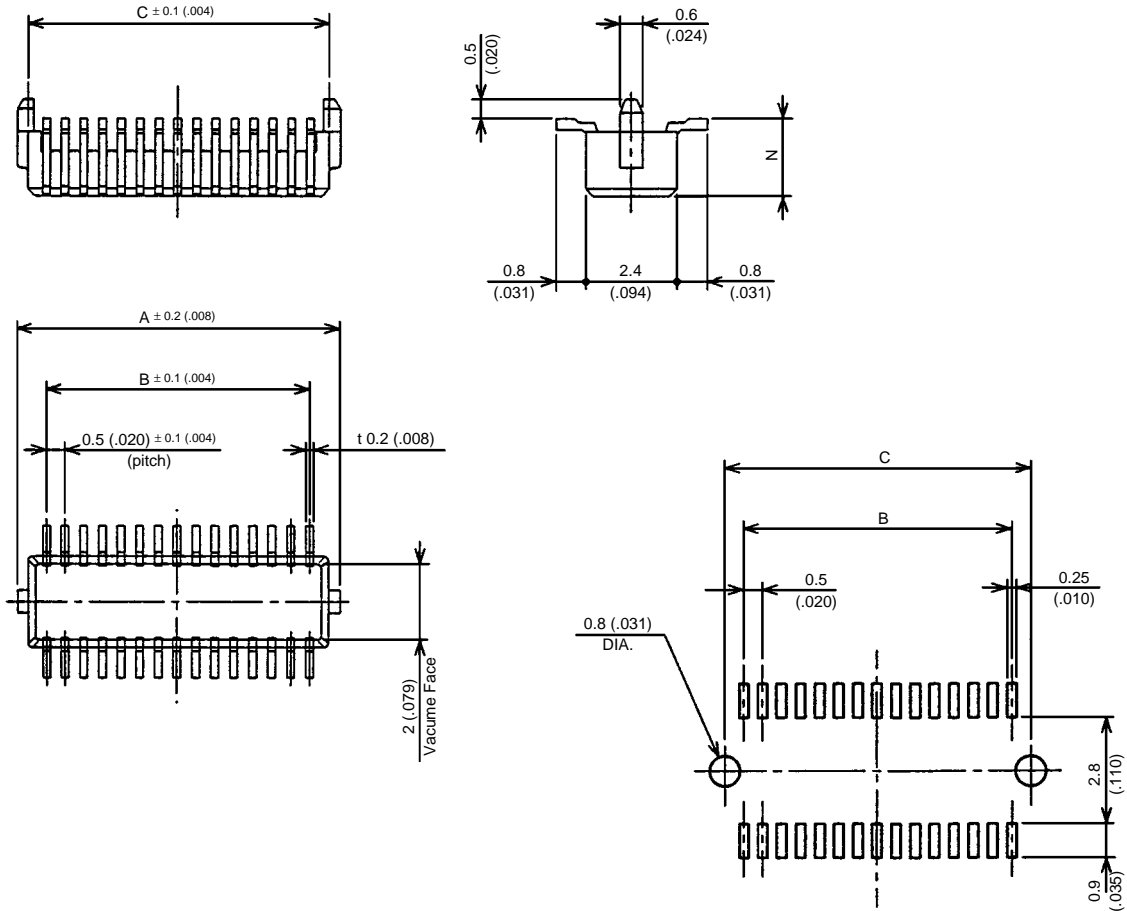


IL-312 SERIES CONNECTORS

0.5mm (.020") Contact Spacing, PCB-to-PCB SMT Connectors

PIN SIDE • STRAIGHT



Applicable PCB Dimensions (Ref.)

No. of Contacts	Part Number		A	B	C
	Standard type Dimension N: 1.55 (.061)	30 type Dimension N: 2.05 (.081)			
20	IL-312- A20P*-VF-A1	IL-312- 20P*-VF30-A1	6.1 (.240)	4.5 (.177)	5.5 (.216)
30	IL-312- A30P*-VF-A1	IL-312- 30P*-VF30-A1	8.6 (.338)	7 (.276)	8 (.315)
40	IL-312- A40P*-VF-A1	IL-312- 40P*-VF30-A1	11.1 (.437)	9.5 (.374)	10.5 (.413)
50	IL-312- A50P*-VF-A1	IL-312- 50P*-VF30-A1	13.6 (.535)	12 (.472)	13 (.512)
60	IL-312- A60P*-VF-A1	IL-312- 60P*-VF30-A1	16.1 (.634)	14.5 (.571)	15.5 (.610)
70	IL-312- A70P*-VF-A1	IL-312- 70P*-VF30-A1	18.6 (.732)	17 (.669)	18 (.709)
80	IL-312- A80P*-VF-A1	IL-312- 80P*-VF30-A1	21.1 (.831)	19.5 (.768)	20.5 (.807)
100	IL-312-A100P*-VF-A1	IL-312-100P*-VF30-A1	26.1 (1.028)	24.5 (.964)	25.5 (1.004)

Note 1: * Add positioning boss code.

B – Positioning boss, Blank – No boss

Note 2: To order by reel of embossed tape, add -E3500 to end of Part Number.

Dimensions in mm (inches).

