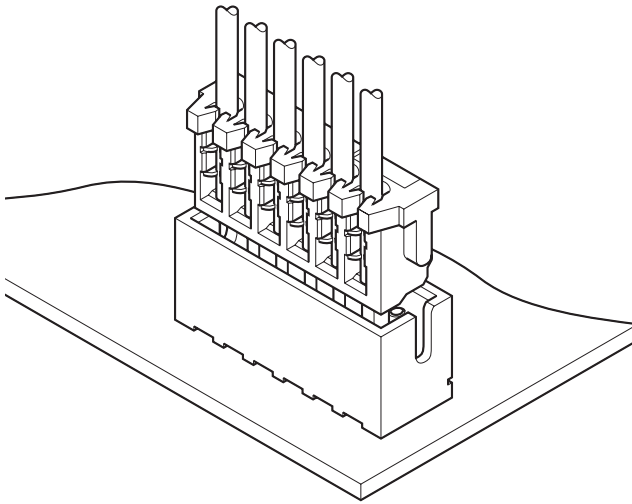


# ZR CONNECTOR

1.5mm pitch/Disconnectable Insulation displacement connectors



**The twin U-slots (IDC slots), the 3-point insulation grip, and the distortion resistant disconnectable construction ensure a reliable connection even during severe environmental conditions.**

- Compact
- Twin U-slot insulation displacement section
- 3-point grip construction
- Distortion resistant construction
- Compatible with the ZH crimp style connector

## Specifications

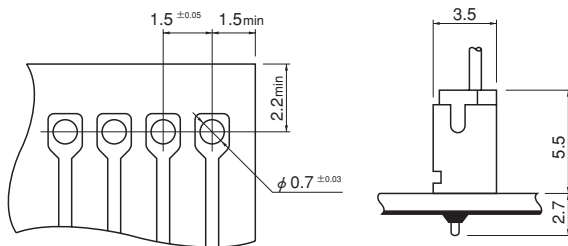
- Current rating: 0.7A AC, DC (AWG #28)
- Voltage rating: 50V AC, DC
- Temperature range: -25°C to +85°C  
(including temperature rise in applying electrical current)
- Contact resistance: Initial value/20m Ω max.  
After environmental testing/30m Ω max.
- Insulation resistance: 500M Ω min.
- Withstanding voltage: 500V AC/minute
- Applicable wire: UL1571(Contact JST for details regarding other UL styles.)  
AWG #30, #28  
Conductor/7 strands, tin-coated  
Insulation O.D./0.7 to 0.8mm  
(Contact JST for diameters greater than 0.8mm.)
- Applicable PC board thickness: 0.6 to 1.2mm, 1.6mm
- \* Compliant with RoHS.
- \* Refer to "General Instruction and Notice when using Terminals and Connectors" at the end of this catalog.
- \* Contact JST for details.

## Standards

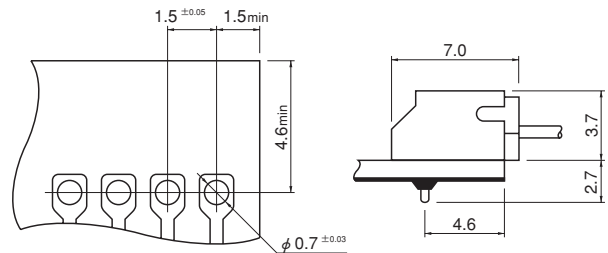
- Ⓜ Recognized E60389
- Ⓢ Certified LR20812

### Through-hole type PC board layout (viewed from soldering side) and Assembly layout

#### Top entry type



#### Side entry type



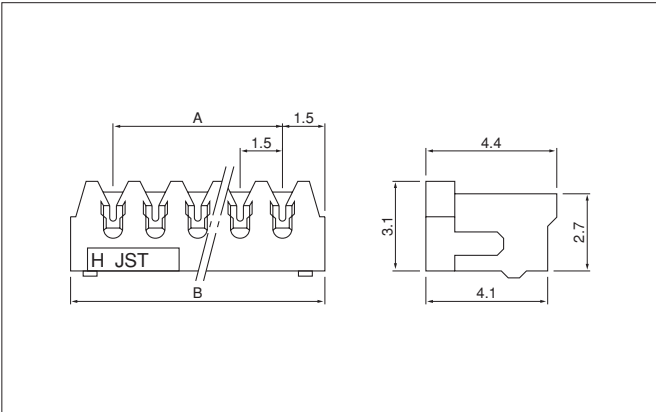
Note: 1. Tolerances are non-cumulative: ±0.05mm for all centers.

2. Hole dimensions differ according to the kind of PC board and piercing method. The dimensions above should serve as a guideline. Contact JST for details.

3. As for the PC board layout for the SMT type shrouded headers, refer to that of the ZH connector.

# ZR CONNECTOR

## Socket



Circuits	Model No.		Dimensions (mm)		Q'ty / box
	AWG #30(natural/gray)	AWG #28(green)	A	B	
2	<b>02ZR-3H-P</b>	<b>02ZR-8M-P</b>	1.5	4.5	2,000
3	<b>03ZR-3H-P</b>	<b>03ZR-8M-P</b>	3.0	6.0	2,000
4	<b>04ZR-3H-P</b>	<b>04ZR-8M-P</b>	4.5	7.5	2,000
5	<b>05ZR-3H-P</b>	<b>05ZR-8M-P</b>	6.0	9.0	2,000
6	<b>06ZR-3H-P</b>	<b>06ZR-8M-P</b>	7.5	10.5	2,000
7	<b>07ZR-3H-P</b>	<b>07ZR-8M-P</b>	9.0	12.0	2,000
8	<b>08ZR-3H-P</b>	<b>08ZR-8M-P</b>	10.5	13.5	2,000
9	<b>09ZR-3H-P</b>	<b>09ZR-8M-P</b>	12.0	15.0	2,000
10	<b>10ZR-3H-P</b>	<b>10ZR-8M-P</b>	13.5	16.5	2,000
11	<b>11ZR-3H-P</b>	<b>11ZR-8M-P</b>	15.0	18.0	2,000
12	<b>12ZR-3H-P</b>	<b>12ZR-8M-P</b>	16.5	19.5	2,000
13	<b>13ZR-3H-P</b>	<b>13ZR-8M-P</b>	18.0	21.0	2,000

**Material and Finish**

Contact: Phosphor bronze, tin-plated (reflow treatment)  
 Housing: Glass-filled PA 66, UL94V-0

**RoHS compliance**  
 Note: Not TÜV approved.

<For reference> As the color identification, the following alphabet shall be put in the underlined part. For availability, delivery and minimum order quantity, contact JST.

- ex. **02ZR-3H-P**  
 standard color AWG#30: H...gray  
 AWG#28: M...green  
K...black R...red E...blue

## Shrouded header

The shrouded headers are interchangeable with those of the ZH crimp style connectors.