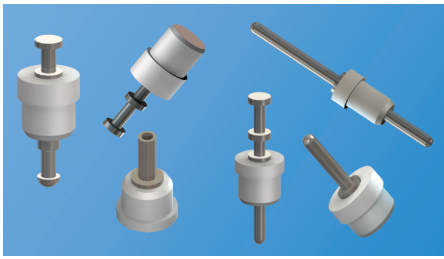


PTFE INSULATED TERMINALS & PINS



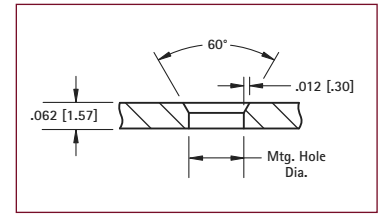
- Space saving design for high density packaging
- Outstanding Electrical, Mechanical, Thermal and Chemical properties
- Provides greater pull-out strength and high torque resistance
- Ideal for high quality terminal and connector applications
- Custom PTFE jacks manufactured to your specifications
- Other platings and bushing colors available upon request

SPECIFICATIONS

Terminal: Brass, Tin Plate

Bushing: White PTFE

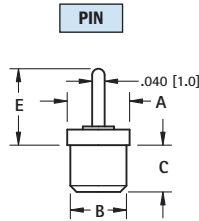
Mounting Detail



PINS



Top Mount

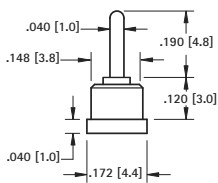


CAT. NO.	A	B	C	E	Mtg. Hole Dia.
11065	.125 (3.2)	.104 (2.6)	.089 (2.3)	.161 (4.1)	.091 (2.3)
11066	.125 (3.2)	.093 (2.4)	.100 (2.5)	.925 (23.5)	.086 (2.2)
11067	.172 (4.4)	.148 (3.8)	.100 (2.5)	.150 (3.8)	.136 (3.5)
11068	.172 (4.4)	.148 (3.8)	.075 (1.9)	.185 (4.7)	
11069	.172 (4.4)	.148 (3.8)	.050 (1.3)	.260 (6.6)	
11070	.172 (4.4)	.148 (3.8)	.075 (1.9)	.260 (6.6)	
11071	.172 (4.4)	.148 (3.8)	.100 (2.5)	.250 (6.4)	
11072	.172 (4.4)	.148 (3.8)	.160 (4.1)	.250 (6.4)	
11073	.172 (4.4)	.148 (3.8)	.100 (2.5)	.490 (12.4)	
11074	.172 (4.4)	.148 (3.8)	.100 (2.5)	.585 (14.9)	

PIN



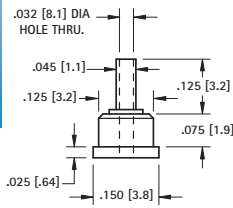
Bottom Mount



CAT. NO. 11075

Mtg. Hole
.136 (3.5) Dia.

HOLLOW PIN



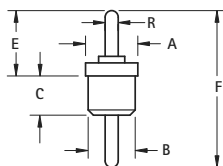
CAT. NO. 11076

Mtg. Hole
.113 (2.9) Dia.

PIN-TO-PIN



Feed-Thru



CAT. NO.	A	B	C	E	F	R	Mtg. Hole Dia.
11150	.093 (2.4)	.075 (1.9)	.100 (2.5)	.315 (8.0)	.550 (13.9)	.030 (7.6)	.069 (1.8)
11151	.125 (3.2)	.093 (2.4)	.100 (2.5)	.196 (5.0)	.453 (11.5)	.040 (1.0)	.086 (2.2)
11152	.125 (3.2)	.093 (2.4)	.100 (2.5)	.250 (6.4)	.515 (13.1)	.040 (1.0)	.086 (2.2)
11153	.125 (3.2)	.093 (2.4)	.100 (2.5)	.250 (6.4)	.443 (11.3)	.040 (1.0)	.113 (2.9)
11154	.150 (3.8)	.125 (3.2)	.100 (2.5)	.250 (6.4)	.443 (11.3)	.040 (1.0)	.113 (2.9)
11155	.172 (4.4)	.148 (3.8)	.100 (2.5)	.250 (6.4)	.515 (13.1)	.040 (1.0)	.136 (3.5)
11156	.172 (4.4)	.148 (3.8)	.110 (2.8)	.260 (6.6)	.535 (13.6)	.040 (1.0)	.136 (3.5)
11157	.172 (4.4)	.148 (3.8)	.250 (6.4)	.250 (6.4)	.710 (18.0)	.040 (1.0)	.136 (3.5)
11158	.172 (4.4)	.148 (3.8)	.250 (6.4)	.303 (7.7)	.719 (18.3)	.040 (1.0)	.136 (3.5)
11159	.172 (4.4)	.148 (3.8)	.160 (4.1)	.250 (6.4)	.725 (18.4)	.040 (1.0)	.136 (3.5)
11160	.172 (4.4)	.148 (3.8)	.170 (4.3)	.250 (6.4)	.630 (16.0)	.040 (1.0)	.136 (3.5)

SOLDER TERMINALS



Top Mount

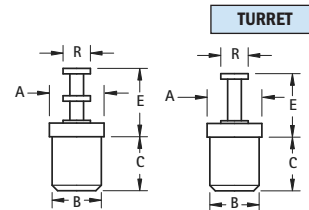


FIG. 1

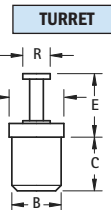


FIG. 2



Bottom Mount

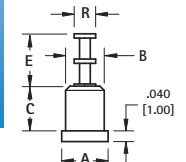
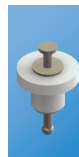


FIG. 3

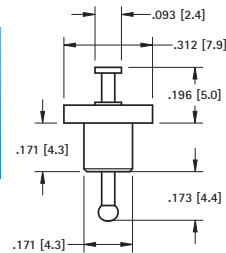
CAT. NO.	FIG.	A	B	C	E	R	Mtg. Hole Dia.
11300	1	.125 (3.2)	.093 (2.4)	.100 (2.5)	.210 (5.3)	.060 (1.5)	.086 (2.2)
11301	1	.125 (3.2)	.093 (2.4)	.080 (2.0)	.250 (6.4)	.080 (2.0)	.086 (2.2)
11302	1	.125 (3.2)	.093 (2.4)	.100 (2.5)	.250 (6.4)	.080 (2.0)	.086 (2.2)
11303	1	.172 (4.4)	.148 (3.8)	.140 (3.6)	.194 (4.9)	.093 (2.4)	.136 (3.5)
11304	1	.172 (4.4)	.148 (3.8)	.110 (2.8)	.250 (6.4)	.080 (2.0)	.136 (3.5)
11305	1	.172 (4.4)	.148 (3.8)	.125 (3.2)	.303 (7.7)	.080 (2.0)	.136 (3.5)
11306	1	.172 (4.4)	.148 (3.8)	.165 (4.2)	.290 (7.4)	.093 (2.4)	.136 (3.5)
11307	1	.172 (4.4)	.148 (3.8)	.250 (6.4)	.290 (7.4)	.093 (2.4)	.136 (3.5)
11308	1	.172 (4.4)	.148 (3.8)	.165 (4.2)	.437 (11.1)	.093 (2.4)	.136 (3.5)
11320	2	.172 (4.4)	.148 (3.8)	.100 (2.5)	.150 (3.8)	.080 (2.0)	.136 (3.5)
11321	2	.187 (4.8)	.164 (4.2)	.150 (3.8)	.370 (9.4)	.090 (2.3)	.152 (3.9)
11322*	2	.150 (3.8)	.125 (3.2)	.110 (2.8)	.180 (4.6)	.090 (2.3)	.113 (2.9)
11310	2	.125 (3.2)	.093 (2.4)	.100 (2.5)	.170 (4.3)	.060 (1.5)	.086 (2.2)
11311	3	.172 (4.4)	.148 (3.8)	.100 (2.5)	.210 (5.3)	.080 (2.0)	.136 (3.5)
11312	3	.187 (4.8)	.171 (4.3)	.155 (3.9)	.210 (5.3)	.080 (2.0)	.158 (4.0)

*Hollow Turret

TURRET-TO-TURRET

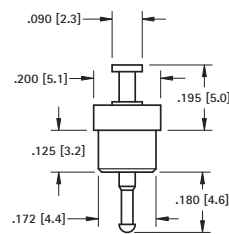


Feed-Thru



CAT. NO. 11250

Mtg. Hole
.158 (4.0) Dia.



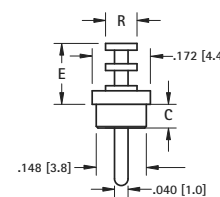
CAT. NO. 11251

Mtg. Hole
.158 (4.0) Dia.

TURRET-TO-PIN



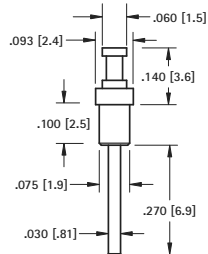
Feed-Thru



CAT. NO.	C	E	R	Mtg. Hole Dia.
11216	.100 (2.5)	.250 (6.4)	.080 (2.0)	.136 (3.5)
11217	.230 (5.8)	.375 (9.5)	.093 (2.4)	.136 (3.5)



Feed-Thru



CAT. NO. 11218

Mtg. Hole
.066 (1.7) Dia.