

# MICRO PINS

- Precision engineered and manufactured
- Space saving design for high density packaging
- Micro pins are available in .017 (.43) to .080 (2.03) diameters
- Ideal for mating with our standard line of micro jacks
- Available for press-fit, swage or solder mounting
- Custom micro pins manufactured to your specifications
- Other platings available upon request

## SPECIFICATIONS

**Material:** Brass, ASTM-B16

**Plating:**

**Gold:** .000010 per MIL-G-45204

**Tin:** .000200 to .000300 per

MIL-T-10727, Type 1

**RoHS** (RoHS Compliant)

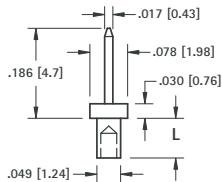
## DASH NUMBERS (L Dimension)

- 1 for .032 (.81) thick Board
- 2 for .062 (1.57) thick Board
- 3 for .093 (2.36) thick Board
- 4 for .125 (3.2) thick Board

**Example:** 1967-1 for .032 (.81) thick Board  
1967-2 for .062 (1.57) thick Board

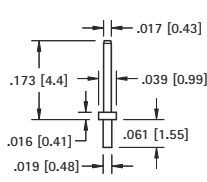


### .017 (.43) PIN - SWAGE MOUNT



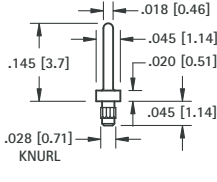
GOLD CAT. NO.	TIN CAT. NO.	L Length	Mtg. Hole Dia.
1967-1	1968-1	.051 (1.3)	.052 (1.32)
1967-2	1968-2	.082 (2.0)	(1.32)

### .017 (.43) PIN - SOLDER MOUNT



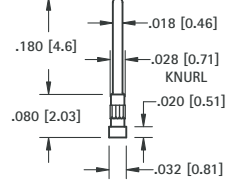
GOLD CAT. NO.	TIN CAT. NO.	Mtg. Hole Dia.
1378-1	1379-1	.022 (.56)

### .018 (.46) PIN - PRESS-FIT



GOLD CAT. NO.	TIN CAT. NO.	Mtg. Hole Dia.
1986-1	1987-1	.026 (.66)

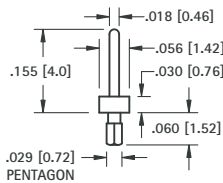
### .018 (.46) PIN - PRESS-FIT



**MATERIAL:** Phosphor Bronze

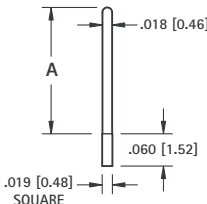
GOLD CAT. NO.	TIN CAT. NO.	Mtg. Hole Dia.
1990-2	1991-2	.026 (.66)

### .018 (.46) PIN - PRESS-FIT



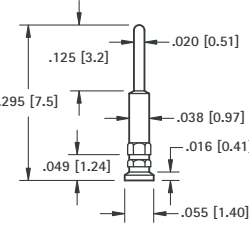
GOLD CAT. NO.	TIN CAT. NO.	Mtg. Hole Dia.
1988-2	1989-2	.026 (.66)

### .018 (.46) PIN - PRESS-FIT



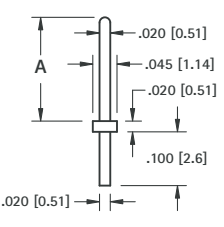
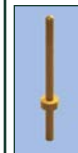
GOLD CAT. NO.	TIN CAT. NO.	A Dim.	Mtg. Hole Dia.
1992-2	1994-2	.243 (6.2)	.022 (.56)
1993-2	1995-2	.140 (3.6)	(.56)

### .020 (.51) PIN - PRESS-FIT



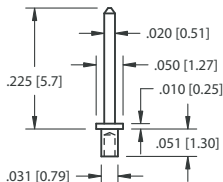
GOLD CAT. NO.	TIN CAT. NO.	Mtg. Hole Dia.
1996-2	1997-2	.040 (1.01)

### .020 (.51) PIN - SOLDER MOUNT



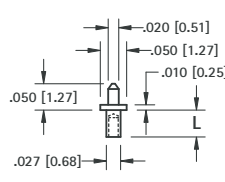
GOLD CAT. NO.	TIN CAT. NO.	A Dim.	Mtg. Hole Dia.
1998-3	2000-3	.250 (6.4)	.024 (.61)
1999-3	2001-3	.425 (10.8)	(.61)

### .020 (.51) PIN - SWAGE MOUNT



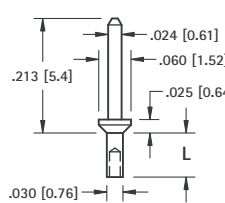
GOLD CAT. NO.	TIN CAT. NO.	Mtg. Hole Dia.
1366-1	1367-1	.035 (.89)

### .020 (.51) PIN - SWAGE MOUNT



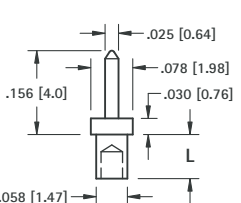
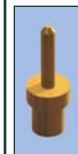
GOLD CAT. NO.	TIN CAT. NO.	L Length	Mtg. Hole Dia.
1372-1	1373-1	.051 (1.3)	.031 (.78)
1372-2	1373-2	.082 (2.1)	(.78)

### .024 (.61) PIN - SWAGE MOUNT



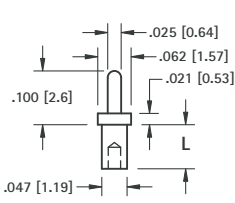
GOLD CAT. NO.	TIN CAT. NO.	L Length	Mtg. Hole Dia.
1406-1	1426-1	.047 (1.2)	.035 (.89)
1406-2	1426-2	.078 (1.9)	(.89)

### .025 (.64) PIN - SWAGE MOUNT



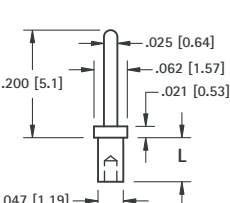
GOLD CAT. NO.	TIN CAT. NO.	L Length	Mtg. Hole Dia.
1408-1	1428-1	.062 (1.6)	.062 (1.57)
1408-2	1428-2	.094 (2.4)	(1.57)

### .025 (.64) PIN - SWAGE MOUNT



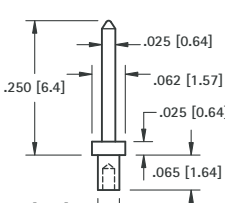
GOLD CAT. NO.	TIN CAT. NO.	L Length	Mtg. Hole Dia.
1404-1	1424-1	.051 (1.3)	.052 (1.32)
1404-2	1424-2	.082 (2.1)	(1.32)

### .025 (.64) PIN - SWAGE MOUNT



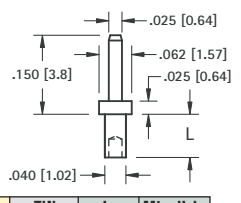
GOLD CAT. NO.	TIN CAT. NO.	L Length	Mtg. Hole Dia.
1407-1	1427-1	.051 (1.3)	.052 (1.32)
1407-2	1427-2	.082 (2.1)	(1.32)

### .025 (.64) PIN - SWAGE MOUNT



GOLD CAT. NO.	TIN CAT. NO.	Mtg. Hole Dia.
1401-1	1421-1	.043 (1.09)

### .025 (.64) PIN - SWAGE MOUNT



GOLD CAT. NO.	TIN CAT. NO.	L Length	Mtg. Hole Dia.
1368-1	1369-1	.051 (1.3)	.043 (1.09)
1368-2	1369-2	.082 (2.1)	(1.09)
1368-3	1369-3	.113 (2.9)	(1.09)