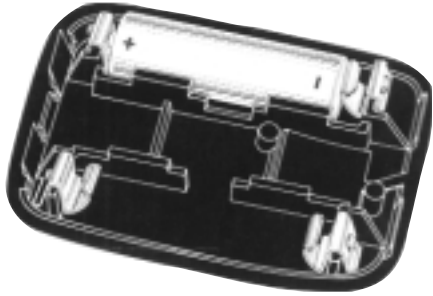


BATTERY CONTACTS

Designers' Choice

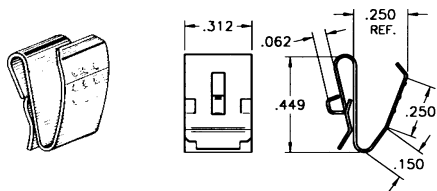


SNAP-ON CONTACTS FOR "A" • "AA" • "AAA" • "AAAA" • "N" SIZES



- Economical and reliable contacts are ideal for molded cases with self contained battery compartments
- Single & dual contact designs available for "A" • "AA" • "AAA" • "AAAA" • "N" size batteries
- Solder "ear" to facilitate soldering of wire lead
- Unique spring tension contact adjusts to variations in battery length
- Reliable spring tension contacts assure low contact resistance
- Clips easily onto .060 to .070 thick panel edges
- Sharp barbs securely anchor contact in place

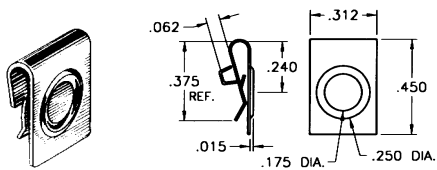
For "A" • "AA"



CAT. NO. 209

MATERIAL
.012 Spring Steel,
Nickel Plate

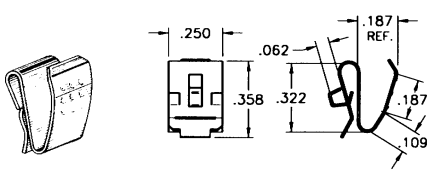
For "A" • "AA"



CAT. NO. 228

MATERIAL
.010 Spring Steel,
Nickel Plate

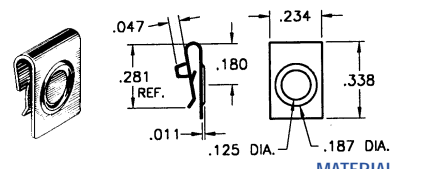
For "AAA" • "AAAA" • "N"



CAT. NO. 204

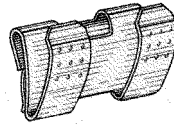
MATERIAL
.010 Spring Steel,
Nickel Plate

For "AAA" • "AAAA" • "N"

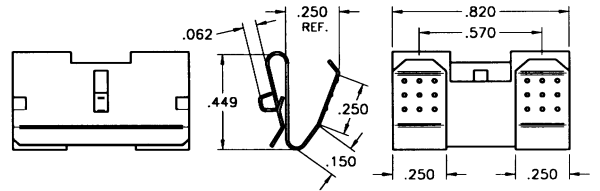


CAT. NO. 238

MATERIAL
.010 Spring Steel,
Nickel Plate

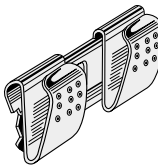


For "A" • "AA"

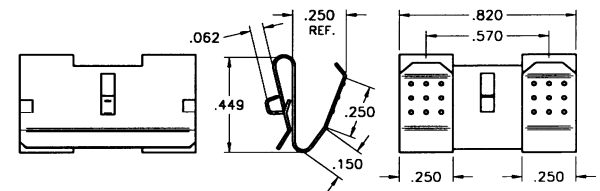


CAT. NO. 210

MATERIAL: .012 Spring Steel, Nickel Plate

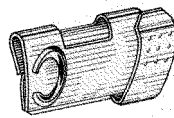


For "A" • "AA"

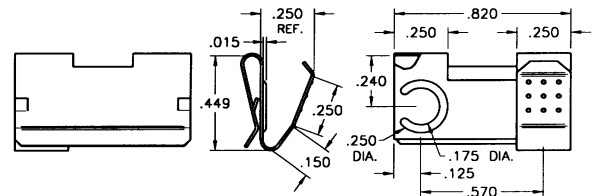


CAT. NO. 288

MATERIAL: .012 Spring Steel, Nickel Plate



For "A" • "AA"



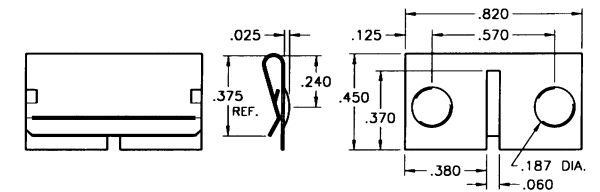
CAT. NO. 290 - Left (shown)

CAT. NO. 291 - Right

MATERIAL: .012 Spring Steel, Nickel Plate



For "A" • "AA"

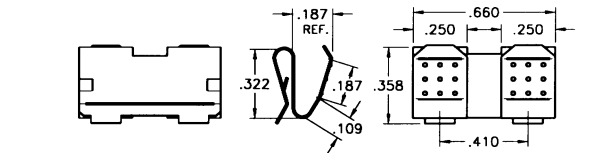


CAT. NO. 292

MATERIAL: .010 Spring Steel, Nickel Plate



For "AAA" • "AAAA" • "N"



CAT. NO. 202

MATERIAL: .010 Spring Steel, Nickel Plate