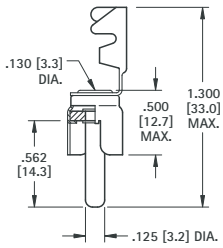


# PHONO PLUGS

• Mates with .125 (3.2) diameter jacks

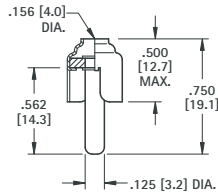
## STRAIN RELIEF LUG CRIMPS TO WIRE INSULATION



CAT. NO. 565

**MATERIAL:**  
Shell: Steel, Tin Plate  
Pin: Brass, Nickel Plate

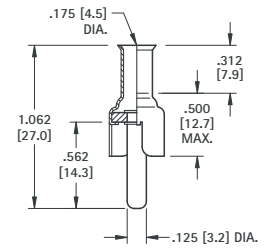
## CONVENTIONAL TYPE



CAT. NO. 561

**MATERIAL:**  
Shell: Brass, Nickel Plate  
Pin: Brass, Nickel Plate

## CRIMP OR SOLDER TYPE EXTRA LONG HANDLE



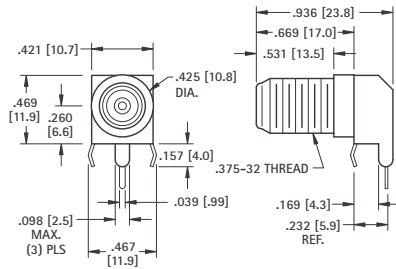
CAT. NO. 567

**MATERIAL:**  
Shell: Steel, Tin Plate  
Pin: Brass, Nickel Plate

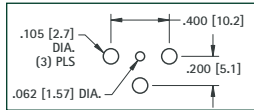
# "F" FEMALE CONNECTOR

## SNAP-FIT PC MOUNT

- Low profile
- Snap-fit mounting for positive retention during wave soldering
- Rugged, stable construction facilitates reliable mating
- High reliability, manufactured using Nickel Plated Brass bodies and Tin Plated Phosphor Bronze contacts
- Supplied with washer and nut



### Mounting Detail

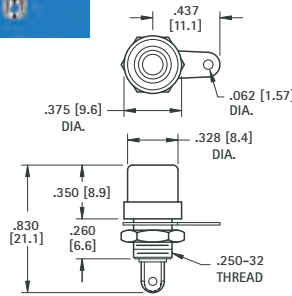


CAT. NO. 911

# PANEL MOUNT PHONO JACKS

- Mates with .125 (3.12) dia. pin
- Mounts to panel in .296 (7.6) dia. hole
- Color coded for ease of identification
- Complete with nut and solder lug

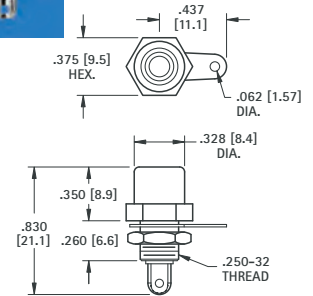
## ROUND BASE



CAT. NO.	INSULATOR COLOR
598	WHITE
580	RED
574	BLACK
599	YELLOW

**MATERIAL:**  
Brass, Nickel Plate

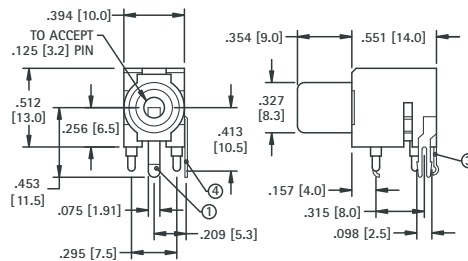
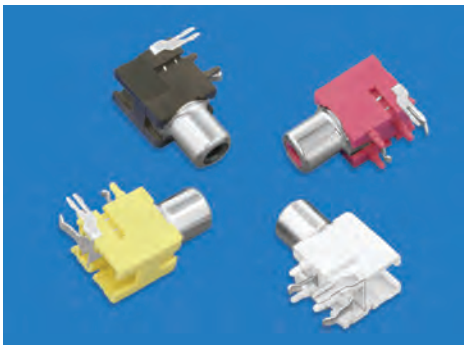
## HEX BASE



CAT. NO.	INSULATOR COLOR
581	WHITE
582	RED
576	BLACK
583	YELLOW

# COLOR KEYED - PC PHONO JACKS

- Mates with .125 (3.2) diameter pins
- Features a normally closed circuit
- Various colors for circuit identification
- Snap-fit mounting for positive retention during wave soldering



CAT. NO.	INSULATOR COLOR
970	WHITE
971	RED
972	BLACK
973	YELLOW

### SPECIFICATIONS

**Housing:** PBT  
**Ground Terminal:** .020 (.51) Brass, Nickel Plate ①  
**Spring Contact:** .012 (.30) Phosphor Bronze, Silver Plate ③  
**Shunt Terminal:** .016 (.41) thick Brass, Silver Plate ④

## SCHEMATIC



### Mounting Detail

