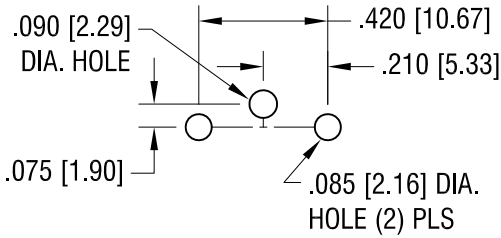
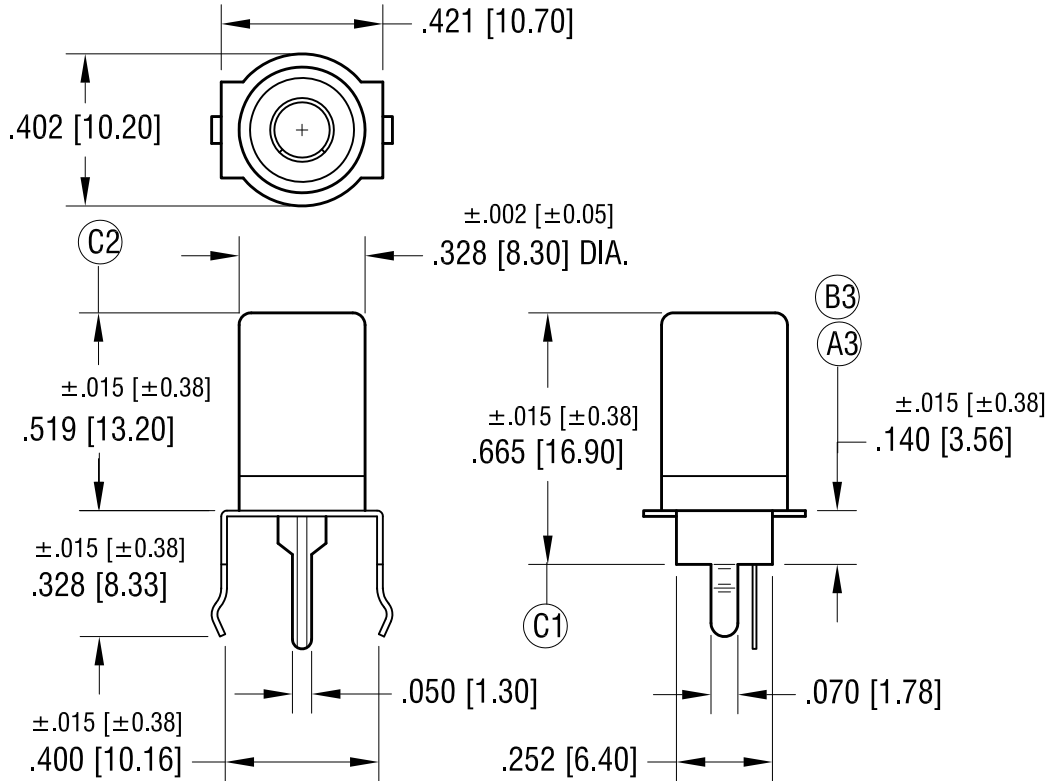
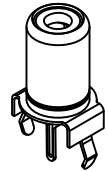


THIS DOCUMENT IS THE PROPERTY OF KEYSTONE ELECTRONICS CORP. AND SHALL NOT BE REPRODUCED, DISTRIBUTED OR USED AS A BASIS FOR MANUFACTURE WITHOUT PRIOR WRITTEN PERMISSION FROM KEYSTONE ELECTRONICS CORP.

MOUNTING DETAIL



ACTUAL SIZE



NOTES:

- 1. SHELL: MAT'L - STEEL
FINISH: - NICKEL PLATE
- CONTACT: MAT'L - BRASS
FINISH: - TIN PLATE

PART NO.	INSULATOR COLOR
584	WHITE
585	BLACK
586	YELLOW

DATE	DESCRIPTION	REV.
5.07.15	ADD C1, C2 ELIMINATE OVERALL DIMENSION CHANGE AS PER ECN 15-048	C
3.19.15	B1 WAS .910, B2 WAS .967 B3 WAS .152 ELIMINATE ALL CHANGES PER REV.A CHANGE AS PER ECN 15-031	B
12.24.14	A1 WAS .843, A2 WAS .875 A3 WAS .140 CHANGE AS PER ECN 14-128	A

KEYSTONE ELECTRONICS CORP.
www.keyelco.com • ASTORIA, N.Y. 11105-2017 • Tel (718) 956-8900

PART NAME: **SNAP-FIT VERTICAL PC PHONO JACK**

MATERIAL: **AS NOTED**

FINISH: **TIN PLATE**

DRN BY: **BOONE** DATE: **8.10.06**

APP'D: **LN** SCALE: **2X**

TOLERANCES INCH [MM]
DECIMAL $\pm .005$ [± 0.13]
ANGULAR $\pm 1^\circ$
UNLESS OTHERWISE SPECIFIED

CODE: **C** DWG NO. **584-586**