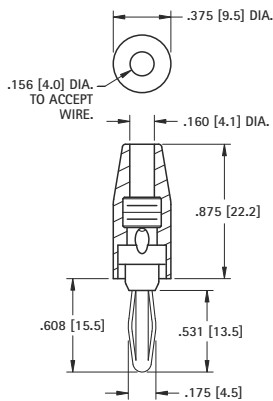


# STANDARD SOLDERLESS

## SOLDERLESS CONNECTION



.175 (4.5) Plug



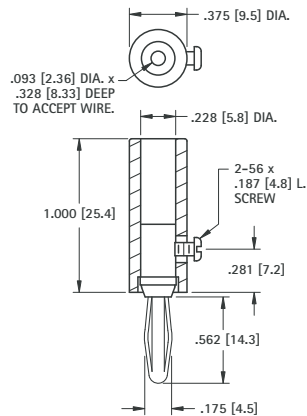
**MATERIAL:**  
**Spring:** Nickel Silver  
**Body:** Brass, Nickel Plate  
**Handle:** Nylon

CAT. NO.	COLOR
6078	RED
6079	BLACK

## SOLDERLESS WITH SET SCREW



.175 (4.5) Plug



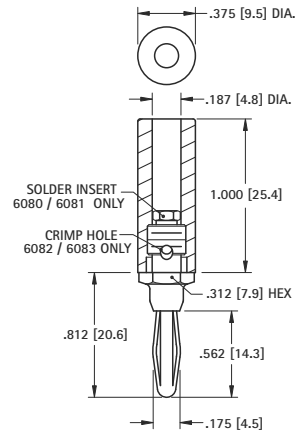
**MATERIAL:**  
**Spring:** Nickel Silver  
**Body:** Brass, Nickel Plate  
**Handle:** Nylon

CAT. NO.	COLOR
6084	RED
6085	BLACK

## SOLDERLESS CONNECTION



.175 (4.5) Plug



**MATERIAL:**  
**Spring:** Phospor Bronze  
**Body:** Brass, Nickel Plate  
**Handle:** Nylon

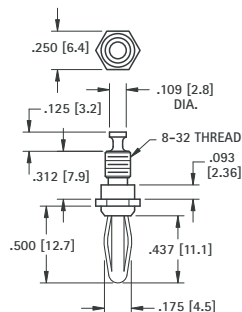
RED CAT. NO.	BLACK CAT. NO.	WIRE CONNECTION
6080	6081	SOLDER
6082	6083	SOLDERLESS

# EXTERNAL THREAD

## SOLDER LUG



.175 (4.5) Plug



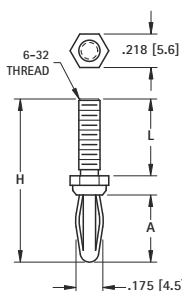
**MATERIAL:**  
**Spring:** Beryllium Copper  
**Body:** Brass, Nickel Plate

**CAT. NO. 652**

## FOUR LEAF SPRING



.175 (4.5) Plug



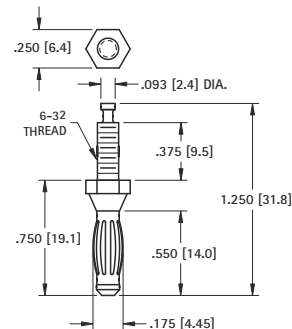
**MATERIAL:**  
**Spring:** Beryllium Copper (Cat. No. 653)  
**Spring:** Phospor Bronze (Cat. No. 654, 655)  
**Body:** Brass, Nickel Plate

CAT. NO.	H	L	A
653	1.062 (27.0)	.500 (12.7)	.437 (11.1)
654	.937 (24.7)	.188 (4.8)	.550 (14.0)
655	1.250 (31.8)	.500 (12.7)	.550 (14.0)

## BARREL SPRING



.175 (4.5) Plug



**MATERIAL:**  
**Spring:** Beryllium Copper  
**Body:** Brass, Nickel Plate

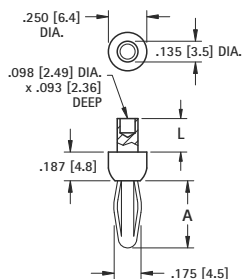
**CAT. NO. 657**

BANANA PLUGS

# STANDARD RIVET



.175 (4.5) Plug



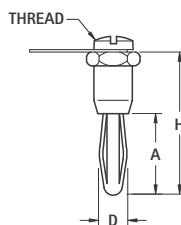
**MATERIAL:**  
**Four Leaf Spring:** Phospor Bronze,  
 \*Barrel Spring, Beryllium Copper  
**Body:** Brass, Nickel Plate

CAT. NO.	L	A	SPRING
552-3	.187 (4.7)	.437 (11.1)	4 leaf
658	.187 (4.7)	.550 (14.0)	barrel
552-4	.218 (5.5)	.437 (11.1)	4 leaf

# INTERNAL THREAD



Supplied with screw and lug  
 Unassembled



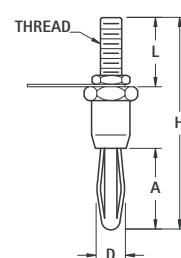
**MATERIAL:**  
**Four Leaf Spring:** Phospor Bronze,  
 \*Barrel Spring, Beryllium Copper  
**Body:** Brass, Nickel Plate

CAT. NO.	D	A	H	THREAD	SPRING
6072	.175 (4.4)	.531 (13.5)	.960 (24.4)	6-32	4 leaf
659*	.175 (4.4)	.550 (14.0)	.960 (24.4)	6-32	barrel
6073	.218 (5.5)	.437 (11.1)	1.120 (28.4)	10-32	4 leaf

# EXTERNAL THREAD



Supplied with nut and lug  
 Unassembled



**MATERIAL:**  
**Spring:** Phospor Bronze  
**Body:** Brass, Nickel Plate

CAT. NO.	D	A	H	L	THREAD
6074-1	.175 (4.5)	.531 (13.5)	1.125 (28.6)	.375 (9.5)	6-32
6074-2	.175 (4.5)	.531 (13.5)	1.500 (38.1)	.750 (19.1)	6-32
6075	.300 (7.5)	.750 (19.1)	1.750 (44.5)	.625 (15.9)	1/4-28