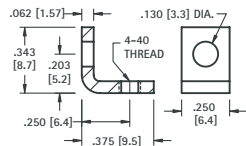


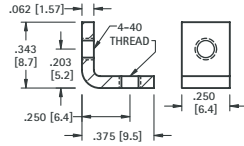
### 4-40 THREAD



**MATERIAL:**  
.062 (1.57) thick Steel,  
Zinc Plate

**CAT. NO. 612**

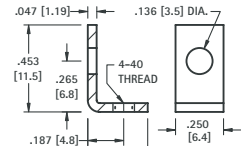
### 4-40 THREAD



**MATERIAL:**  
.062 (1.57) thick Steel,  
Zinc Plate

**CAT. NO. 621**

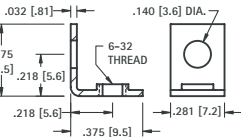
### 4-40 THREAD



**MATERIAL:**  
.047 (1.19) thick Brass,  
Tin Plate

**CAT. NO. 616**

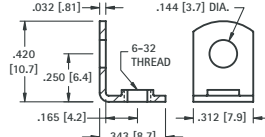
### 6-32 THREAD



**MATERIAL:**  
.032 (.81) thick Brass,  
Nickel Plate

**CAT. NO. 634**

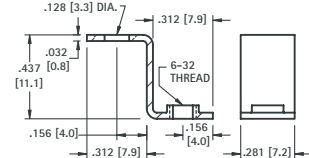
### 6-32 THREAD



**MATERIAL:**  
.032 (.81) thick Brass,  
Tin Plate

**CAT. NO. 614**

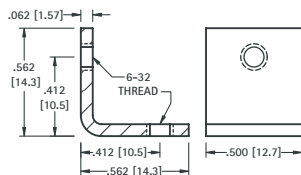
### 6-32 THREAD



**MATERIAL:**  
.032 (.81) thick Brass,  
Tin Plate

**CAT. NO. 630**

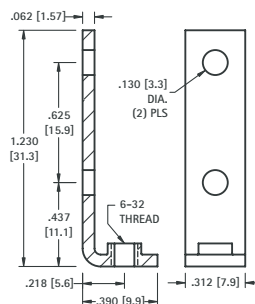
### 6-32 THREAD



**MATERIAL:**  
.062 (1.57) thick Steel,  
Nickel Plate

**CAT. NO. 4334**

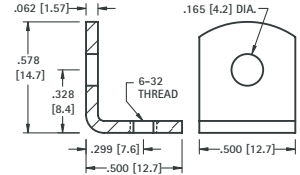
### 6-32 THREAD



**MATERIAL:**  
.062 (1.57) thick Steel,  
Nickel Plate

**CAT. NO. 708**

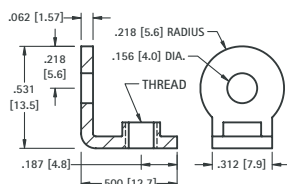
### 6-32 THREAD



**MATERIAL:**  
.062 (1.57) thick Steel,  
Tin Plate

**CAT. NO. 617**

### 6-32 or 8-32 THREAD

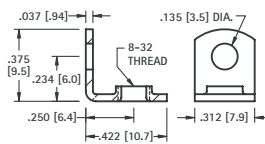


**MATERIAL:**  
.062 (1.57) thick Brass,  
Nickel Plate

CAT. NO.	THREAD
4332	6-32
4333	8-32

**CAT. NO. 611**

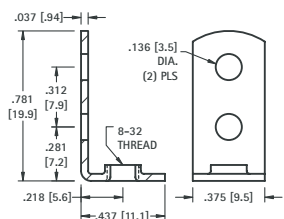
### 8-32 THREAD



**MATERIAL:**  
.037 (.94) thick Brass,  
Tin Plate

**CAT. NO. 611**

### 8-32 THREAD



**MATERIAL:**  
.037 (.94) thick Steel,  
Tin Plate

**CAT. NO. 631**