

SMT/THM TEST POINTS

Designers' Choice

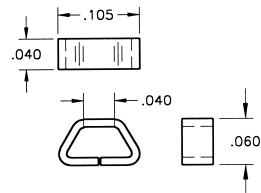


(SMT) SURFACE MOUNT TEST POINTS ON TAPE & REEL

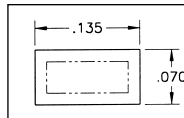


MINIATURE

- Ultra low profile ideally suited for advanced surface mount printed circuit board applications
- Designed for long life and durability
- Manufactured using flat wire to provide a large mounting surface area
- Ideal for use with miniature probes, clips, and hooks
- Efficient, safe, board level testing



Pad Layout



SPECIFICATIONS

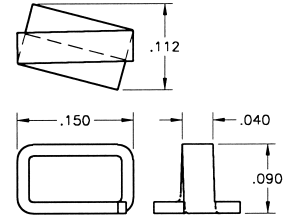
Contact Material: .010 Phosphor Bronze
 Contact Finish: Tin Lead
 Tape Material: 8mm wide; 4mm pitch; conductive polycarbonate carrier tape meets ANSI/EIA-481 standard
 Reel Size: Cat. No. 5015: 7 inches – 1000 pieces per reel
 Cat. No. 5017: 13 inches – 5000 pieces per reel

CAT. NO. 5015 (Tape & Reel)
 CAT. NO. 5017 (Tape & Reel)

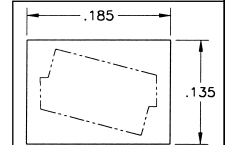


COMPACT

- Unique design provides exceptional strength and durability
- Simplifies testing on dense SMT circuit boards
- Ideal for use with most standard probes, clips and hooks
- Efficient, safe, board level testing



Pad Layout



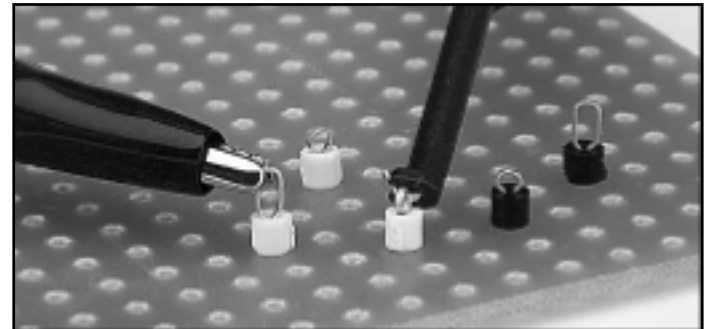
SPECIFICATIONS

Contact Material: .015 Phosphor Bronze
 Contact Finish: Tin Lead
 Tape Material: 12mm wide; 4mm pitch; conductive polycarbonate carrier tape meets ANSI/EIA-481 standard
 Reel Size: Cat. No. 5016: 7 inches – 1000 pieces per reel
 Cat. No. 5018: 13 inches – 5000 pieces per reel

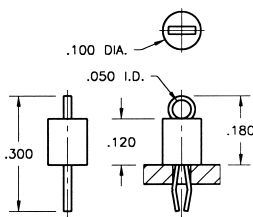
CAT. NO. 5016 (Tape & Reel)
 CAT. NO. 5018 (Tape & Reel)

(THM) THRU-HOLE MOUNT TEST POINTS – COLOR KEYED

- Color keyed for visibility and quick identification
- Economical choice for PC test point terminations
- Snap-fit mounting provides positive retention for wave soldering
- Wire form loop for safe, non-slip testing
- Space saving, ultra low and low profile designs
- High profile design for difficult to reach applications
- Suitable for high density packaging on .062 and .093 PC boards
- Practical replacement for wire-wrap posts and turrets
- Secure grip for J hooks, EZ hooks, grabbers, alligator clips, tips or probes
- Plastic base strengthens terminal for positive holding power
- Ideal for reliable production testing and field service troubleshooting



MINIATURE

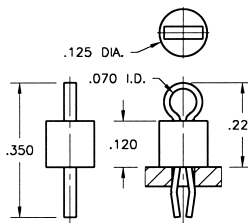


CAT. NO.	BASE COLOR
5000	RED
5001	BLACK
5002	WHITE
5003	ORANGE
5004	YELLOW

SPECIFICATIONS

Terminal: .010 x .020 Phosphor Bronze Wire, Tin Plate
 Base: Valox, UL 94V-0
MOUNTING DETAIL
 Mtg. Hole: .040 Diameter
 Mtg. Centers: .100 x .100

COMPACT

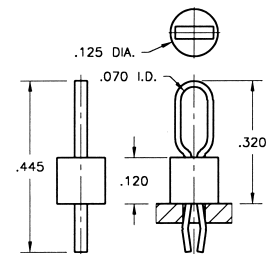


CAT. NO.	BASE COLOR
5005	RED
5006	BLACK
5007	WHITE
5008	ORANGE
5009	YELLOW

SPECIFICATIONS

Terminal: .015 x .032 Phosphor Bronze Wire, Tin Plate
 Base: Valox, UL 94V-0
MOUNTING DETAIL
 Mtg. Hole: .063 Diameter
 Mtg. Centers: .125 x .125

MULTIPURPOSE



CAT. NO.	BASE COLOR
5010	RED
5011	BLACK
5012	WHITE
5013	ORANGE
5014	YELLOW

SPECIFICATIONS

Terminal: .015 x .032 Phosphor Bronze Wire, Tin Plate
 Base: Valox, UL 94V-0
MOUNTING DETAIL
 Mtg. Hole: .063 Diameter
 Mtg. Centers: .125 x .125

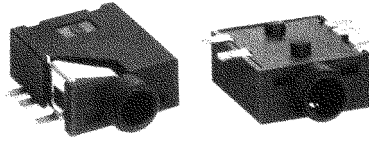


Designers' Choice

AUDIO JACKS & "F" CONNECTORS

SURFACE MOUNT STEREO JACKS

- Mates with 2.5mm and 3.5mm plugs
- Designed for reliable interface with audio equipment including computer speakers, headphones, sound cards, cell phones, etc.
- Models available for mono and stereo applications
- Low profile, surface mount design



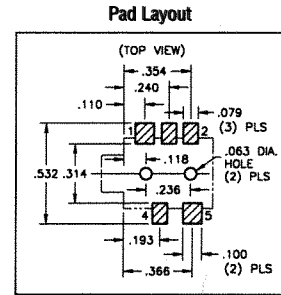
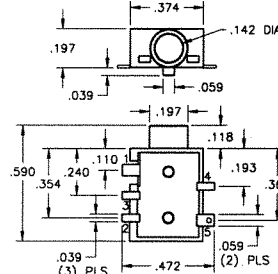
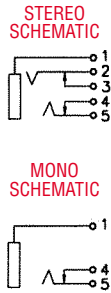
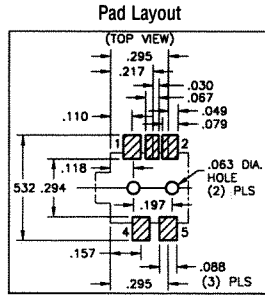
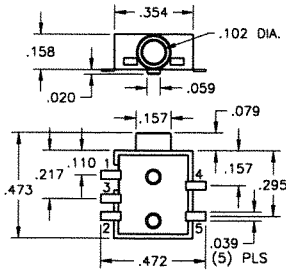
SPECIFICATIONS

Housing: Polyamide, Rated UL 94V-0
 Ground Terminal: .012 Brass, Gold Flash ①
 Spring Contacts: .008 Phosphor Bronze, Gold Flash ② ⑤
 Shunt Terminals: .012 Brass, Gold flash ③ ④

FOR 2.5mm PLUGS

Supplied on Tape and Reel

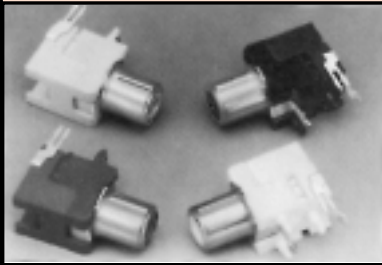
FOR 3.5mm PLUGS



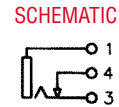
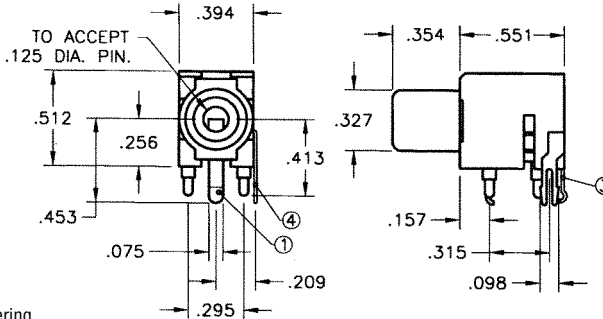
CAT. NO. 980TR (Stereo) Tape Spec's: 24mm wide; 16mm pitch
 CAT. NO. 982TR (Mono) Reel Spec's: 15 inch reel (1,000 pieces per reel)

CAT. NO. 981TR (Stereo) Tape Spec's: 24mm wide; 16mm pitch
 CAT. NO. 983TR (Mono) Reel Spec's: 15 inch reel (800 pieces per reel)

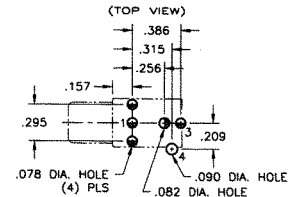
COLOR KEYED — PC PHONO JACKS



- Mates with .125 diameter pins
- Features a normally closed circuit
- Various colors for circuit identification
- Snap-fit mounting for positive retention during wave soldering



Mounting Detail



CAT. NO.	COLOR
970	WHITE
971	RED
972	BLACK
973	YELLOW

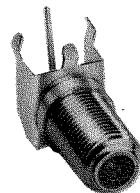
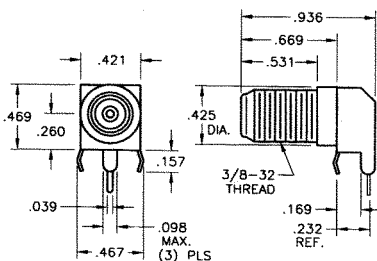
SPECIFICATIONS

Housing: PBT
 Ground Terminal: .020 Brass, Nickel Plate ①
 Spring Contact: .012 Phosphor Bronze, Silver Plate ③
 Shunt Terminal: .016 Brass, Silver Plate ④

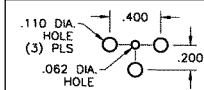
"F" FEMALE CONNECTORS

SNAP-FIT PC MOUNT

- Low profile
- Snap-fit mounting for positive retention during wave soldering
- Rugged, stable construction facilitates reliable mating
- High reliability, manufactured using Nickel Plated Brass bodies and Tin Plated Phosphor Bronze contacts
- Supplied with washer and nut



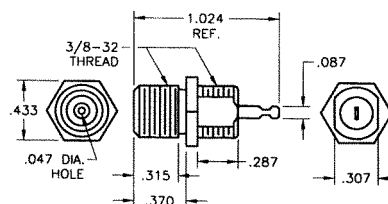
Mounting Detail



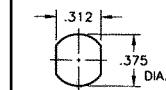
CAT. NO. 911

PANEL MOUNT

- Anti-rotation design
- Rugged construction facilitates reliable mating
- High reliability, manufactured using Nickel Plated Brass bodies and Tin Plated Phosphor Bronze contacts
- Supplied with washer and nut



Mounting Detail



CAT. NO. 912