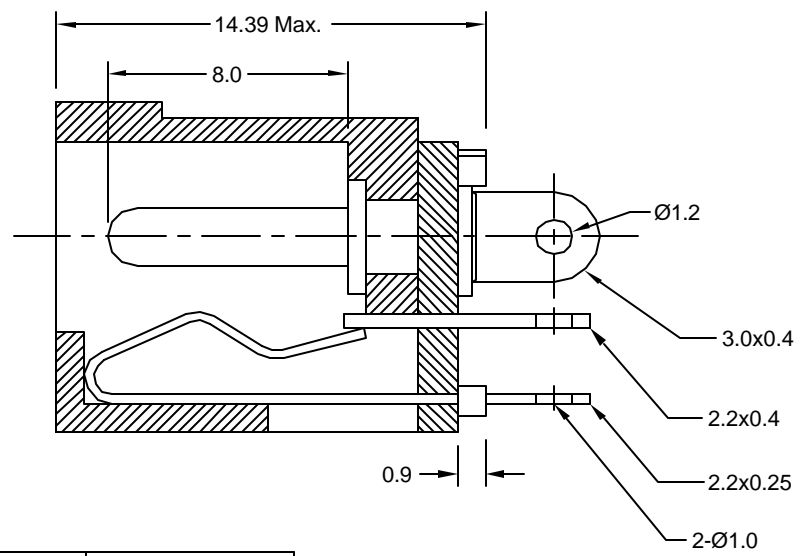
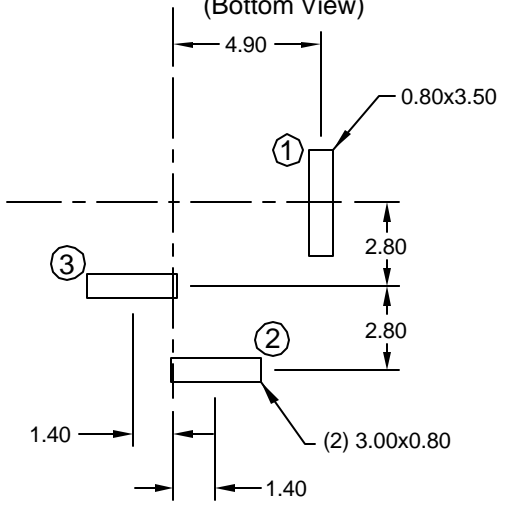


Recommended PCB Layout (Bottom View)



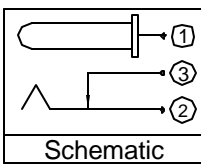
Mechanical Characteristics

Durability Test: 5000 cycles
 Insertion Force: 0.3kg-2.0kg
 Extraction Force: 0.3kg-2.0kg
 Operating Temp: -25°C to +85°C

Electrical Characteristics

Contact Resistance
 Before Test
 Between Terminals: 30 milliohms Max.
 Plug to Contacts: 50 milliohms Max.
 After Test:
 Between Terminals: 60 milliohms Max.
 Plug to Contacts: 100 milliohms Max.

Rated Voltage: 24V DC
 Rated Current: 3.5 Amps
 Insulation Resistance: 100 Megohms Min. (initial)
 50 Megohms Min. (after humidity test)
 Dielectric Withstanding Voltage:
 500V AC for 1 minute



Part Number	Center Pin Diameter
KLDVX-0202-A	Ø2.00
KLDVX-0202-B	Ø2.50
KLDVX-0202-D	Ø3.00

Material and Finish

Body: High Temp Material
 UL94V-0 Rated, Color: Black
 Center Pin: Brass, Nickel Plated
 Contact #1: Brass, Tin Plated
 Contact #2: Phosphor Bronze, Tin Plated
 Contact #3: Brass, Tin Plated

RoHS COMPLIANT
 EU Directive 2002/95/EC

Tolerances
X.X ± 0.25
X.XX ± 0.15
Unless Stated Otherwise



REV.	DATE	DESCRIPTION	REV. BY	CHK. BY	DRAWN BY	DATE
A1	7/6/05	New Drawing	H. MA	C. Furumasu	H. MA	7/6/05
A2	11/8/05	Change to Hi Temp Material	H. MA	C. Furumasu		
A3	8/3/06	Add -D option	H. MA	C. Furumasu		

KLDVX-0202-x

Power Jack, Vertical, PCB Mount, RoHS compliant

Ø2.0mm, Ø2.5mm & Ø3.0mm Center Pin, High Temp