

**Material and Finish**

Body: polyamide high temp. thermoplastic, UL94V-0, Color: Black  
 Center Pin: Copper alloy, Nickel Plated  
 Contact #1: Brass, Silver Plated  
 Contact #2: Phosphor Bronze, Silver Plated  
 Contact #3: Brass, Silver Plated

**Electrical Characteristics**

Contact Resistance  
 Before Test  
 Between Terminals: 30 milliohms Max.  
 Plug to Contacts: 50 milliohms Max.  
 After Test:  
 Between Terminals: 60 milliohms Max.  
 Plug to Contacts: 100 milliohms Max.

Rated Voltage: 24V DC

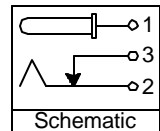
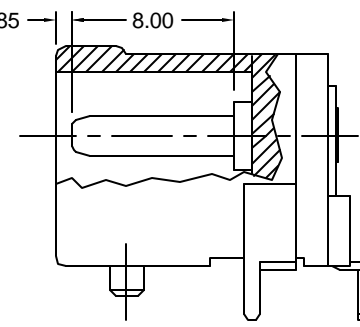
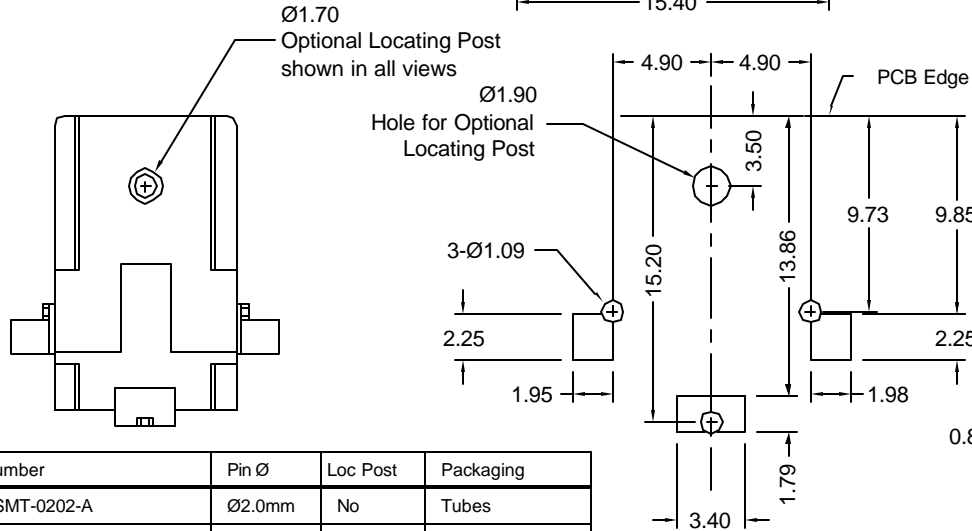
Rated Current: 3.5 amps

Insulation Resistance: 100 Megohms Min. at 500V DC

Dielectric Withstanding Voltage: 500V AC (RMS) for 1 minute

**Mechanical Characteristics**

Durability Test: 5000 cycles  
 Insertion Force: 0.3kg-2.0kg  
 Extraction Force: 0.3kg-2.0kg  
 Initial Extraction Force: 0.8kg Min. (When measured with reference test plug)  
 Operating Temp: -25°C to +85°C  
 Max. Soldering Temp: 230°C for 30 seconds, 260°C max.



Part Number	Pin Ø	Loc Post	Packaging
KLDX-SMT-0202-A	Ø2.0mm	No	Tubes
KLDX-SMT-0202-ATR	Ø2.0mm	No	Tape & Reel
KLDX-SMT-0202-AP	Ø2.0mm	Yes	Tubes
KLDX-SMT-0202-APTR	Ø2.0mm	Yes	Tape & Reel
KLDX-SMT-0202-B	Ø2.5mm	No	Tubes
KLDX-SMT-0202-BTR	Ø2.5mm	No	Tape & Reel
KLDX-SMT-0202-BP	Ø2.5mm	Yes	Tubes
KLDX-SMT-0202-BPTR	Ø2.5mm	Yes	Tape & Reel



Tolerances
X.X ± 0.25
X.XX ± 0.15
Unless Stated Otherwise

REV.	DATE	DESCRIPTION	REV. BY	CHK. BY	DRAWN BY	DATE
A1	6/9/05	New Drawing	H. MA	C. Furumasu	H. MA	6/9/05
B1	1/18/06	ECO #05-069	R. Aguirre	H. MA		

**KLDX-SMT-0202-xx**

**DC Power Jack, Post (Optional)**  
**Thru Hole-SMT, RoHS Compliant**

