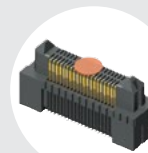
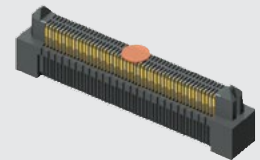


ERM5-040-02.0-L-DV-P-TR



ERM5-020-05.0-L-DV-K-TR



ERM5 SERIES

(0.50 mm) .0197"

# RUGGED HIGH-SPEED HEADER

## SPECIFICATIONS

For complete specifications and recommended PCB layouts see [www.samtec.com?ERM5](http://www.samtec.com?ERM5)

**Insulator Material:**  
Black LCP

**Terminal Material:**  
Phosphor Bronze or BeCu

**Plating:**  
Au or Sn over  
50 μm (1.27 μm) Ni  
**Current Rating (-DV to -DV):**  
1.5 A per pin  
(2 pins powered)  
**Current Rating (-DV to -RA):**  
1.6 A per pin  
(2 pins powered)

**Operating Temp Range:**  
-55 °C to +125 °C

**Voltage Rating:**  
194 VAC mated with ERF5

**RoHS Compliant:**  
Yes

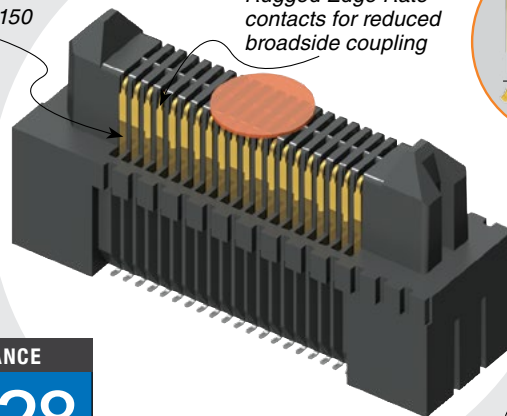
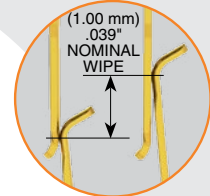
Mates with:  
ERF5



- Edge Rate® contacts
- High contact wipe

20 to 150 I/Os

Rugged Edge Rate® contacts for reduced broadside coupling



7 mm, 9 mm, 10 mm, 11 mm or 12 mm stack height

## HIGH-SPEED CHANNEL PERFORMANCE

ERM5/ERF5 @ 7 mm Mated Stack Height

Rating based on Samtec reference channel. For full SI performance data visit [Samtec.com](http://Samtec.com) or contact [SIG@samtec.com](mailto:SIG@samtec.com)

28 Gbps

## PROCESSING

**Lead-Free Solderable:**  
Yes

**SMT Lead Coplanarity:**  
(0.10 mm) .004" max (010-040)  
(0.13 mm) .005" max (050-075)\*  
\*(.004" stencil solution may be available; contact [IPG@samtec.com](mailto:IPG@samtec.com))

## RECOGNITIONS

For complete scope of recognitions see [www.samtec.com/quality](http://www.samtec.com/quality)



ERM5	NO. OF POSITIONS PER ROW	LEAD STYLE	PLATING OPTION	DV	PICK & PLACE PAD	TR
------	--------------------------	------------	----------------	----	------------------	----

-010, -020, -030, -040, -050, -060, -070, -075
--

-02.0  
= 2 mm Body Height

-04.0  
= 4 mm Body Height

-05.0  
= 5 mm Body Height

-L  
= 10 μm (0.25 μm) Gold on contact, Matte Tin on tail

(Required in callout)  
-K  
= (3.50 mm) .138" DIA Polyimide Film Pick & Place Pad (-04.0 & -05.0 lead style only)

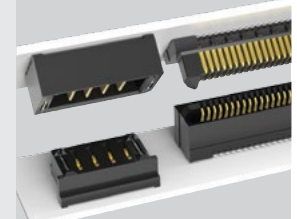
-P  
= Plastic Pick & Place Pad (-02.0 lead style only) (-010 positions not available)

ERM5 LEAD STYLE	MATED HEIGHT*	
	ERF5 LEAD STYLE	
	-05.0	-07.0
-02.0	(7.00) .276	(9.00) .354
-04.0	(9.00) .354	(11.00) .433
-05.0	(10.00) .394	(12.00) .472

\*Processing conditions will affect mated height.

LEAD STYLE	A	B
-02.0	(1.94) .076	(4.84) .191
-04.0	(3.94) .155	(6.84) .269
-05.0	(4.94) .194	(7.84) .309

## POWER/SIGNAL APPLICATION



Compatible with UMPT/UMPS for flexible two-piece power/signal solutions

## ALSO AVAILABLE (MOQ Required)

- Friction Lock
  - Weld Tab
  - Other platings
- Contact Samtec.

**Notes:**  
Patented

Some lengths, styles and options are non-standard, non-returnable.

