

Material and Finish

Body: Nylon 6T High Temp Thermoplastic
UL94V-0, Color: Black

Contact #1: Phosphor Bronze, Silver Plated
Contact #2: Brass, Silver Plated
Contact #3: Brass, Silver Plated
Center Pin: Brass, Nickel Plated

Electrical Characteristics

Contact Resistance
Before Durability Test
Between Terminals: 30 milliohms Max.
Plug to Contacts: 50 milliohms Max.

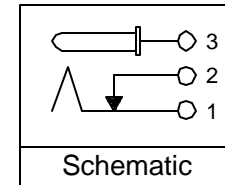
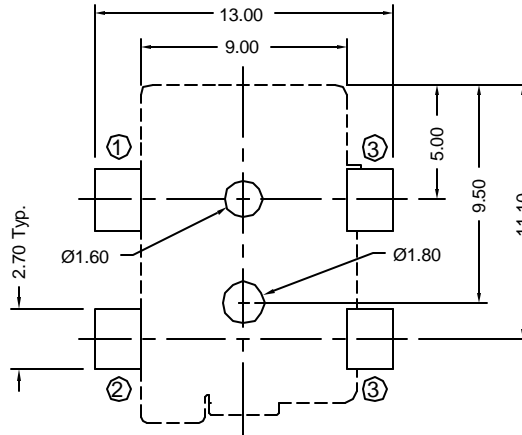
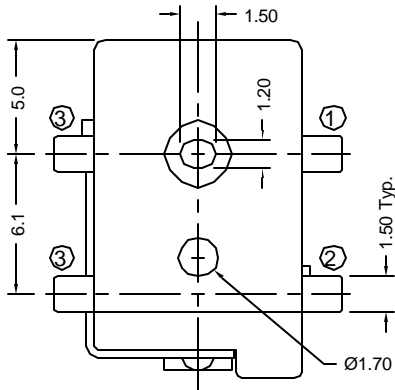
After Durability Test:
Between Terminals: 60 milliohms Max.
Plug to Contacts: 100 milliohms Max.

Rated Current: 3.5 amps at 24V DC

Insulation Resistance: 100 Megohms Min.
at 500 VDC

Dielectric Withstanding Voltage Test:
500V AC RMS for 1 minute

**Recommended PCB Layout
(Component Side)**



Part Number	Center Post Diameter	Packaging
KLDX-SMT2-0202-A	Ø2.00	Bulk (standard)
KLDX-SMT2-0202-B	Ø2.50	
KLDX-SMT2-0202-A-TR	Ø2.00	Tape & Reel (TR option)
KLDX-SMT2-0202-B-TR	Ø2.50	



Tolerances
X.X ± 0.25
X.XX ± 0.15
Unless Stated Otherwise

REV.	DATE	DESCRIPTION	REV. BY	CHK. BY	DRAWN BY	DATE
A0	2/1/05	New Drawing	H. MA	C. Furumasu	H. MA	2/1/05
A1	3/23/05	Release Drawing	H. MA	N/A		
A2	10/11/05	ECO#05-052	H. MA	C. Furumasu		

KLDX-SMT2-0202-x

UNITS
mm

DC Power Jack, SMT

RoHS Compliant

