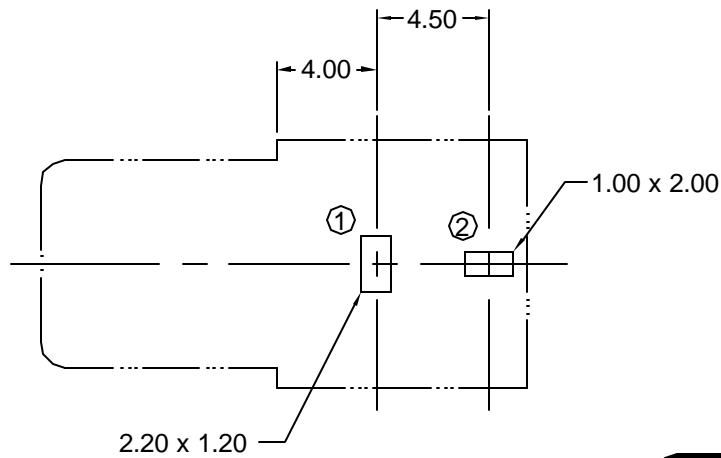


Part Number	Color
KLPX-0848A-2-B	black
KLPX-0848A-2-O	orange
KLPX-0848A-2-R	red
KLPX-0848A-2-W	white
KLPX-0848A-2-Y	yellow



Recommended PCB Layout

Materials and Finish

Housing:
PBT Thermoplastic
UL 94V-0 rated

Contact Material: brass

Contact Plating:
barrel, pin 1: Nickel
pin 2: Tin

Mechanical Characteristics

Insertion Force:
0.3kg - 3.0kg

Extraction Force:
0.3kg - 3.0kg

Durability: 5000 mating cycles min.

Electrical Characteristics

Contact Resistance:
Before Test: 30milliohms max.
(Initial)

Insulation Resistance:
100 Megohms min.
at 500V DC

Withstanding Voltage:
500V AC RMS for 1 minute

Operating Temperature:
-25°C to +80°C

RoHS COMPLIANT
EU Directive 2002/95/EC



Tolerances
X.X ± 0.25
X.XX ± 0.15
Unless Stated Otherwise

REV.	DATE	DESCRIPTION	REV. BY	CHK. BY	DRAWN BY	DATE
A1	6/22/05	New Drawing	H. MA	C. Furumasa	H. MA	6/22/05
A2	01/31/06	ECO 06-006	R. Aguirre	H. MA		

KLPX-0848A-2-x

RCA Jack, right angle

through-hole, RoHS Compliant

