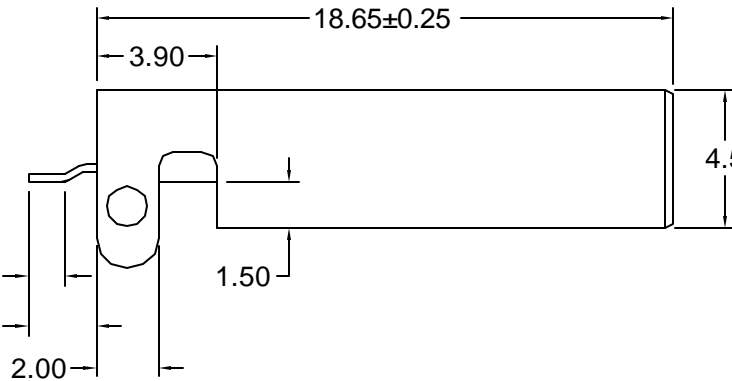


Recommended PCB Layout
(Top View)

RoHS COMPLIANT
EU Directive 2002/95/EC



Materials and Finish

Shield: Steel,
Nickel Plated

Insulator: UL94V-0 rated
High Temp. PA 6T
Color- White or Black
Reflow Process Compatible

Contact Material:
Copper Alloy

Plating Options:
Standard: Gold Flash
on Contact Area,
Tin on Solderails,
with nickel underplated

30 Option: 30u" Gold
on Contact Area,
Tin on Solderails,
with nickel underplated

Specifications

Rated Voltage:
30V AC (rms)

Contact Current Rating:
1A max.

Contact Resistance:
30 milliohms Max.

Insulation Resistance:
1000 Megohms Min.

Dielectric Withstanding:
500V AC

Insertion Force:
3.57kg max.

Extraction Force:
1.02kg min.

Operating Temperature:
-55°C to 85°C

Part Number	Contact Area Plating Finish	Insulator Color	Dim "A"/Dim "B"
KUSBX-SMT2AP1S-W	Gold Flash (standard)	White	0.90mm/1.10mm ±0.10mm
KUSBX-SMT2AP1S-W30	30u" Gold (30 option)		
KUSBX-SMT2AP1S-B	Gold Flash (standard)	Black	0.90mm/1.10mm ±0.10mm
KUSBX-SMT2AP1S-B30	30u" Gold (30 option)		
KUSBX-SMT2AP5S-W	Gold Flash (standard)	White	1.35mm/1.55mm ±0.10mm
KUSBX-SMT2AP5S-W30	30u" Gold (30 option)		
KUSBX-SMT2AP5S-B	Gold Flash (standard)	Black	1.35mm/1.55mm ±0.10mm
KUSBX-SMT2AP5S-B30	30u" Gold (30 option)		

Tolerances

X.X ± 0.25
X.XX ± 0.15
Unless Stated
Otherwise



REV.	DATE	DESCRIPTION	REV. BY	CHK. BY	DRAWN BY	DATE
A1	5/11/05	New Drawing	H. MA	C. Furumasa	H. MA	5/10/05
A2	7/27/05	ECO #05-020	R. Aguirre	H. MA		

KUSBX-SMT2APxS-x

USB A-type Plug, 4 position, RoHS Compliant

SMT, w/ Through Hole Shield Tabs

