

Materials and Finish

Housing: LCP (reflow compatible),
UL 94V-0 Rated

Terminals: Copper Alloy,
Gold Flash all over
Nickel Plating

Recommended Soldering Temp.:
230°C for 30 seconds
260°C maximum

Mechanical Characteristics

Insertion Force:
0.4kg - 2.0kg

Extraction Force:
0.3kg - 2.0kg

Durability: 5000 mating cycles

Electrical Characteristics

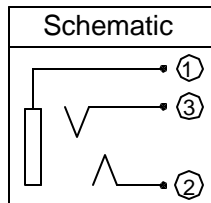
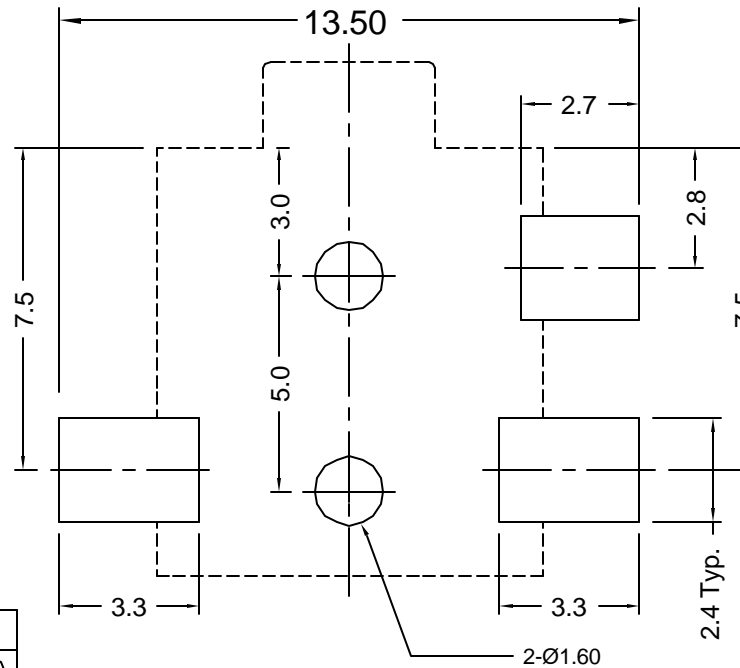
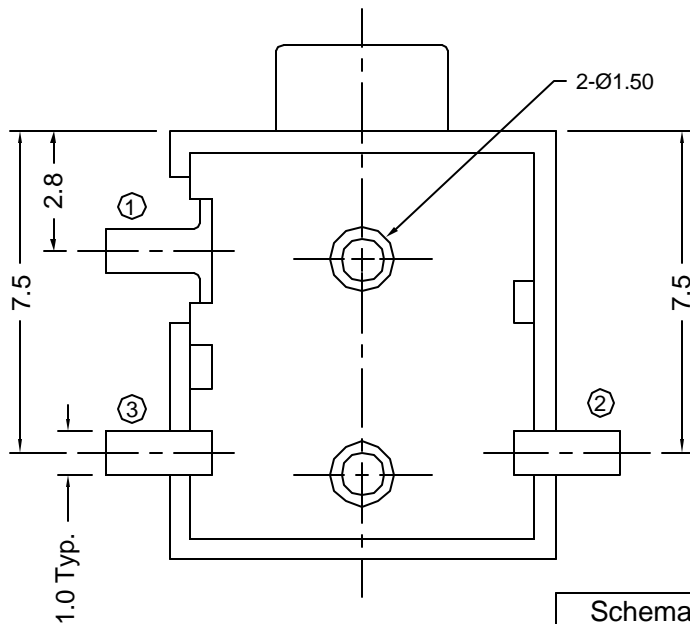
Contact Resistance:
Before Test: 30milliohms Max.
After Durability Test:
60 milliohms Max.

Insulation Resistance:
More than 100 Megohms
at 250V DC

Dielectric Strength:
250V AC RMS for 1 minute

Operating Temp:
-25°C to +85°C

Recommended PCB Layout
(top view)



Part Number	Packaging
STX-2550-3N	Bulk
STX-2550-3N-TR	Tape and Reel

Tolerances

X.X ± 0.25
X.XX ± 0.15
Unless Stated Otherwise



REV.	DATE	DESCRIPTION	REV. BY	CHK. BY	DRAWN BY	DATE
A0	9/22/05	New Drawing	R. Aguirre	H. MA	R. Aguirre	07/11/05
A1	6/1/06	Release Drawing	H. MA	N/A		

UNITS
mm

STX-2550-3N

Stereo Jack, RoHS Compliant

All Plastic Body, Rt. Ang., SMT Type

