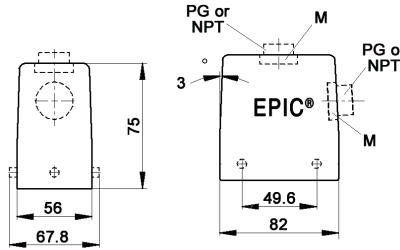
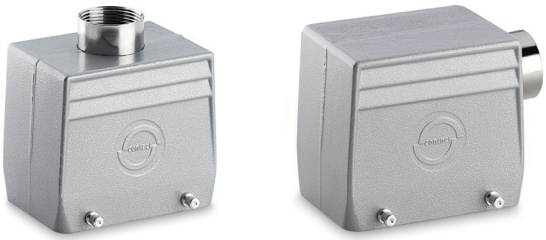


## EPIC® HA 32 standard hood

Hood with double lever bolts



all dimensions are in mm

**Technical data**

**IP Protection class:** NEMA 4, NEMA 12  
IP65

**Complete the installation**

HA dust covers  
page 429

**Approvals**

**PG**

PG hood		SKINTOP® gland	
size	part number	plastic	metal
<b>Top entry</b>			
PG 21	105820	53015050	52015750
PG 29	105830	53015060	52015760
<b>Side entry</b>			
PG 21	105760	53015050	52015750
PG 29	105770	53015060	52015760

PG hood provided with EPIC® SM/SP gland

**NPT**

NPT hood		SKINTOP® gland	
size	part number	plastic	metal
<b>Top entry</b>			
¾"	105820NP	S1134	53112034
1"	105830NP	S1101	53112044
<b>Side entry</b>			
¾"	105760NP	S1134	53112034
1"	105770NP	S1101	53112044

NPT hood provided with NPT fitting

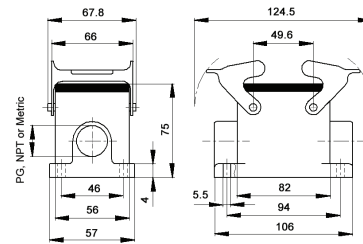
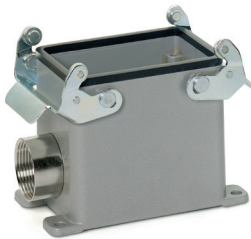
**metric**

Metric hood*		SKINTOP® gland	
size	part number	plastic	metal
<b>Top entry</b>			
M25	19582000	53111030	53112030
M32	19583000	53111040	53112040
M40	79520600	53111050	53112050
<b>Side entry</b>			
M25	19576000	53111030	53112030
M32	19577000	53111040	53112040
M40	19577500	53111050	53112050

\* Metric hoods do not come with a neck

## EPIC® HA 32 surface mount base

Surface mount base with double levers



all dimensions are in mm

**Technical data**

**IP Protection class:** NEMA 4, NEMA 12  
IP65

**Complete the installation**

HA dust covers  
page 429

**Approvals**

**PG**

PG base		SKINTOP® gland	
size	part number	plastic	metal
<b>One entry</b>			
PG 21	104740	53015050	52015750
PG 29	104741	53015060	52015760
<b>Two entries</b>			
PG 21	104820	53015050	52015750
PG 29	104821	53015060	52015760

PG base provided with EPIC® SM/SP gland

**NPT**

NPT base		SKINTOP® gland	
size	part number	plastic	metal
<b>One entry</b>			
¾"	104740NP	S1134	53112034
1"	104741NP	S1101	53112044
<b>Two entries</b>			
¾"	104820NP	S1134	53112034
1"	104821NP	S1101	53112044

NPT base provided with NPT fitting

**metric**

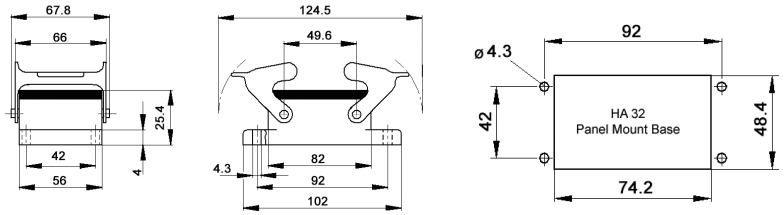
Metric base*		SKINTOP® gland	
size	part number	plastic	metal
<b>One entry</b>			
M25	19474000	53111030	53112030
M32	19474100	53111040	53112040
<b>Two entries</b>			
M25	19482000	53111030	53112030
M32	19482100	53111040	53112040
M40	79506800	53111050	53112050

\* Metric bases do not come with a neck

If not otherwise specified, all values relating to the product are nominal values.  
Photographs are not to scale and are not true representations of the products in question.

## EPIC® HA 32 panel mount base

Panel mount base with double levers




all dimensions are in mm

### Technical data

**IP Protection class:** NEMA 4, NEMA 12  
IP65

### Complete the installation

 HA dust covers  
page 429

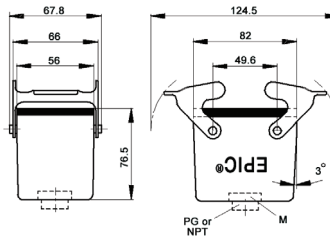
### Approvals



Dust cover included	Part number
no	104720C0

## EPIC® HA 32 cable coupler hoods

Cable coupler with double levers




all dimensions are in mm

### Technical data

**IP Protection class:** NEMA 4, NEMA 12  
IP65

### Complete the installation

 HA dust covers  
page 429

### Approvals



### PG

PG coupler		SKINTOP® gland	
size	part number	plastic	metal
<b>Standard profile</b>			
PG 21	105880	53015050	52015750
PG 29	105885	53015060	52015760

PG coupler provided with EPIC® SM/SP gland

### NPT

NPT coupler		SKINTOP® gland	
size	part number	plastic	metal
<b>Standard profile</b>			
¾"	105880NP	S 1134	53112034
1"	105885NP	S 1101	53112044

NPT coupler provided with NPT fitting

### metric

Metric coupler*		SKINTOP® gland	
size	part number	plastic	metal
<b>Standard profile</b>			
M25	19588000	53111030	53112030
M32	19588500	53112030	53112040

\* Metric couplers do not come with a neck