


| | | |
|---------------------------|----------------------|---|
| 52220000 | DATA SHEET |  |
| Valid from: 03.07.2018 | SKINTOP® CUBE | |

The **SKINTOP® CUBE** multi cable bushing system is made up of just a frame (**SKINTOP® CUBE FRAME**) and flexible clip sealing modules (**SKINTOP® CUBE MODULES**). It is able to assemble the **SKINTOP® CUBE** on 16- and 24-pole connector openings and is used as an entry in an enclosure for converted cables and cords with different diameters. The system offers strain relief, protection class and protection against vibration. During the removing of the modules remains the frame on the housing.



Material:

SKINTOP® CUBE FRAME

Frame and down holder: Glass balls reinforced

Polyamide

Flat sealing: CR

SKINTOP® CUBE MODULE

Clip module: Special Polypropylene V0

Sealing: LSE2

Technical features:

Protection class: IP64 acc. to EN 60529
Type 1 and Type 5 acc. to UL50E

Strain relief: Retention acc. to EN 50262

Temperature range: -20°C up to +80°C

Colour: Black (RAL9005)

Max. cable inlets: 8 by SKINTOP® CUBE FRAME 16
10 by SKINTOP® CUBE FRAME 24



Approvals:

Other characteristics:

- Good chemical resistance (oil, cleaning agents...)
- UV and ozone resistant
- Permanent protection against vibration
- Frame mountable from in- and outside, fewer parts through huge, variable clamping ranges.
- Flammability HB / V-0 acc. to UL94

Norm references:

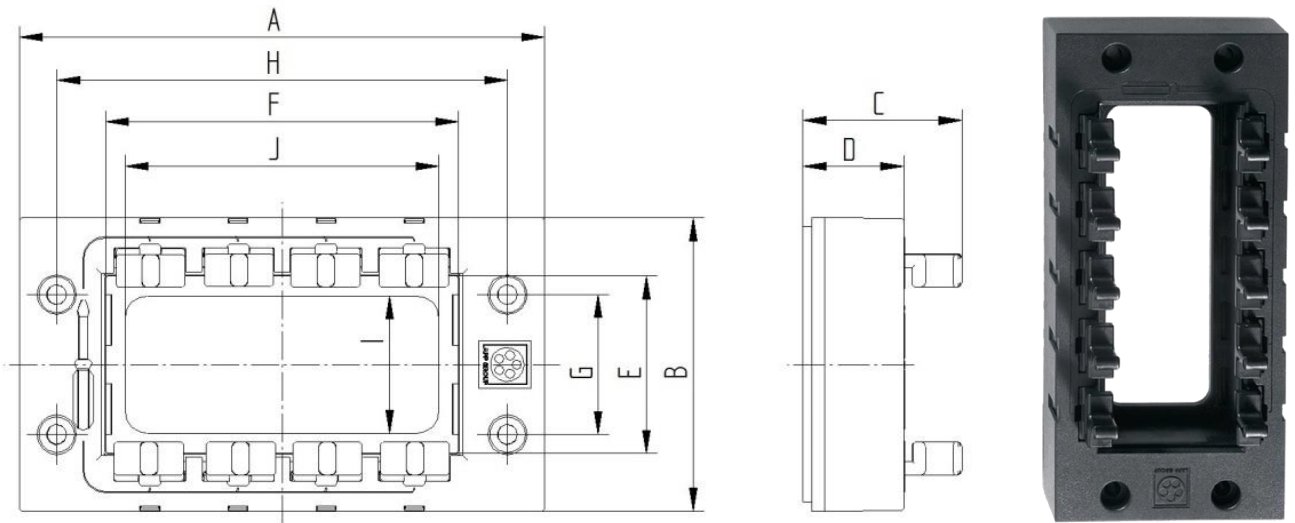
- Retention in acc. to DIN EN 62444
- Protection class in acc. to DIN EN 60529

Suitable accessories:

SKINTOP® BRUSH ADD-ON 24

| | | |
|---|---------------------------------------|-------------|
| Creator: M. Wegerer /PDP Released: DAMU1/PDP | Document: DB52220000EN Version: 08 | Page 1 of 3 |
|---|---------------------------------------|-------------|

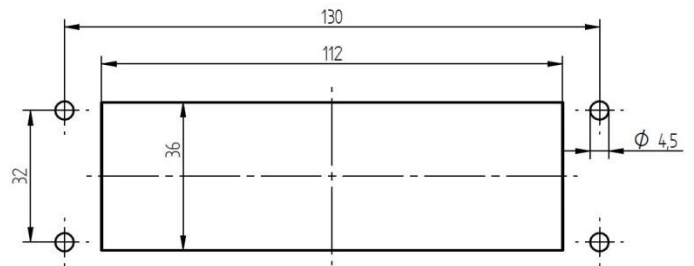
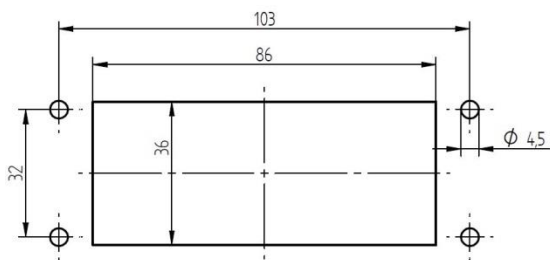
SKINTOP® CUBE FRAME




| FRAME | A [mm] | B [mm] | C min. [mm] | C max. [mm] | D [mm] | E [mm] | F [mm] | G [mm] | H [mm] | I [mm] | J [mm] | Article No. |
|---------|--------|--------|-------------|-------------|--------|--------|--------|--------|--------|--------|--------|-------------|
| 16-pole | 120 | 67 | 37 | 46 | 23 | 40,5 | 80,7 | 32 | 103 | 31,4 | 72 | 52220000 |
| 24-pole | 145 | 67 | 37 | 46 | 23 | 40,5 | 100,8 | 32 | 130 | 31,4 | 92 | 52220001 |

SKINTOP® CUBE FRAME 16
Panel cut-out for 16-pole connector

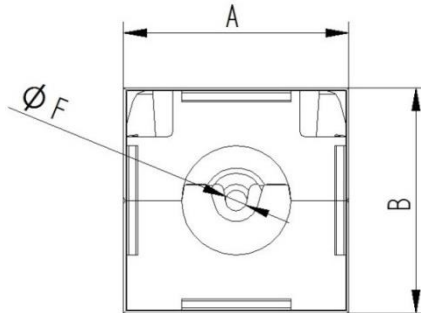
SKINTOP® CUBE FRAME 24
Panel cut-out for 24-pole connector



| | | |
|---------------------------|----------------------|---|
| 52220000 | DATA SHEET |  |
| Valid from: 03.07.2018 | SKINTOP® CUBE | |

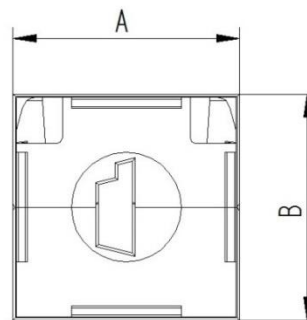
SKINTOP® CUBE MODULE

SKINTOP® CUBE MODULE 20x20 / 40x40



| Article number | Article designation | Size A x B [mm] | Clamping range ØF [mm] |
|----------------|----------------------------------|-----------------------|------------------------------|
| 52220004 | SKINTOP® CUBE MODULE 20x20 BLIND | 20 x 20 | 1 - 3 |
| 52220002 | SKINTOP® CUBE MODULE 20x20 SMALL | 20 x 20 | 4 - 6 |
| 52220003 | SKINTOP® CUBE MODULE 20x20 LARGE | 20 x 20 | 6 - 9 |
| 52220005 | SKINTOP® CUBE MODULE 40x40 SMALL | 40 x 40 | 9 - 12 |
| 52220006 | SKINTOP® CUBE MODULE 40x40 LARGE | 40 x 40 | 12 - 16 |
| 52220007 | SKINTOP® CUBE MODULE 40x40 BLIND | 40 x 40 | |

SKINTOP® CUBE MODULE ASI BUS



| Article number | Article designation | Size A x B [mm] | Clamping range ØF [mm] |
|----------------|------------------------------------|-----------------------|------------------------------|
| 52220040 | SKINTOP® CUBE MODULE 20x20 ASI BUS | 20 x 20 | ASI BUS |

For more information please see our current catalogue. Please do not hesitate to contact our laboratory if there are any questions regarding resistance against aggressive agents and special oil.

| | | |
|---|---------------------------------------|-------------|
| Creator: M. Wegerer /PDP Released: DAMU1/PDP | Document: DB52220000EN Version: 08 | Page 3 of 3 |
|---|---------------------------------------|-------------|