

HWB60 Sealed Power Distribution Module

Compact hard-wired PDM for 280 style components

- ▶ Accepts any combination of MINI® fuses, relays, circuit breakers, diodes, etc.
- ▶ Accepts Delphi Metri-Pack 280 terminals, cable seals, and cavity plugs
- ▶ Compact sealed unit: box is 113 x 52 x 82mm (4.6 x 2.0 x 3.2")



HWB60 accepts plug-in circuit protection components with 280 style footprint.

Ordering Information	
Part No.	Description
PDM21001LXM	Complete assembly: Base, cover, gasket and 6 TPAs*
868-163	Base
873-029	Cover
901-315	Gasket
883-083	TPA* (6 needed per assembly)

*TPA: Terminal Position Assurance locks for wire terminals

Features & Benefits

The elimination of internal bussing allows user to customize their own circuitry, with direct wire-to-component connections.

User can install any MINI® (280 style) circuit protection component.

Compact size. PDM is perfect fit for accessory circuits, overflow circuits from main PDM, or a main module on smaller vehicles.

IP67 sealed units can be installed virtually anywhere on the vehicle. HWB60 stands up to roadsplash and salt spray, and gives robust protection to devices.

TPAs (terminal position assurance locks) give secondary locking protection of the wire leads, which aid in prevention of leads from being pulled out. TPAs snap onto the back of the HWB60 after wires are installed, and do not interfere with the cable seals needed to ensure IP protection.

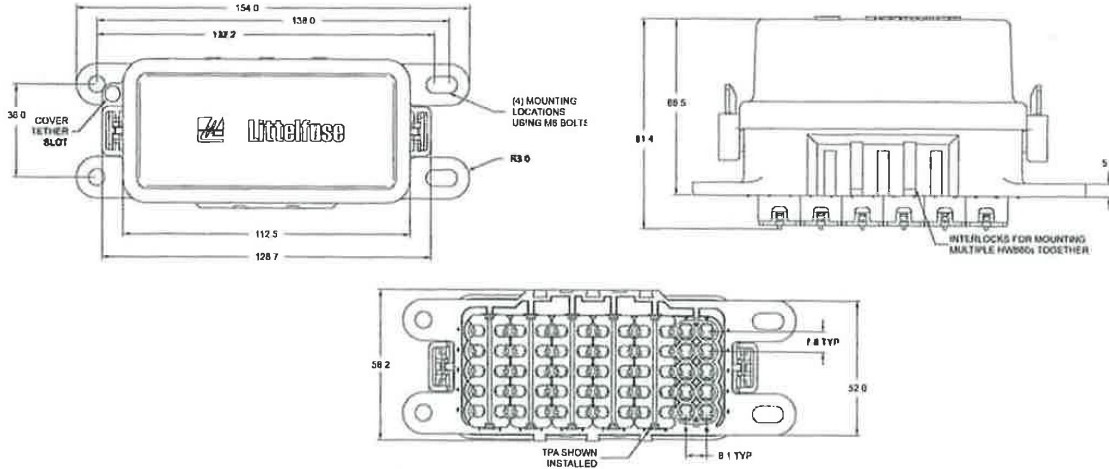
Easy to connect. Wires plug into the back of the unit using industry-standard Delphi Metri-Pack Series 280 tanged terminals.

Modular. Multiple HWB60s can be devetailed together to expand circuit protection capacity. They can also be interlocked to other Littelfuse PDMs and fuseholders (i.e. FLC, MEGA® Flex holder, MIDI® Flex holder, etc.) for complete system protection.

Extra storage. Add-on accessory option to hold a fuse puller.

Cover tethers also available to prevent loss of component during service.

Dimensions



Specifications

HWB60	
Max Fuse Size:	30A
Number of Cavities:	60
Mounting Torque:	5.5-6.5Nm
Materials:	
Body & Cover:	UL 94-V-0 glass-filled thermoplastic
Bracket:	Plated Steel
Gasket:	Silicone
Mating Terminals & Seals:	Delphi Metric-Pack 280 sealed female (tanged) Not available from Littelfuse. May be purchased through Delphi distributors
Temperature Range:	-40°C — 85°C
Ingress Protection:	IP67
Dimensions:	113x52x81mm
Labels:	Consult Littelfuse for module and cover label options
Wire Size:	0.35 — 5.00mm ²
Accessories:	Spare fuse puller holder Cover tether

Delphi mating terminals and seals (Metri-Pack Series 280 female sealed tanged terminals)

Cable range	Terminal	Cable diameter	Cable seal	Cable plug
0.50 – 0.35mm ²	12084201	1.29 – 1.70mm	12034365/12015899	12010300
1.00 – 0.80	12077411	1.60-2.15	12089444/12089679	12010300
2.00 – 1.00	15363933	2.03 – 2.85	12041351/12015323	12010300
3.00 – 2.00	12129493	2.45 – 3.80	12015323/12015359	12010300
5.0	12077413	3.45-4.30	12015360/12015193	12010300

Above list of Delphi terminals, seals and plugs are only a partial list of Delphi offerings – additional parts may be available. Delphi products are not available from Littelfuse, but can be purchased from Delphi distributors (subject to change – consult Delphi to further verify).