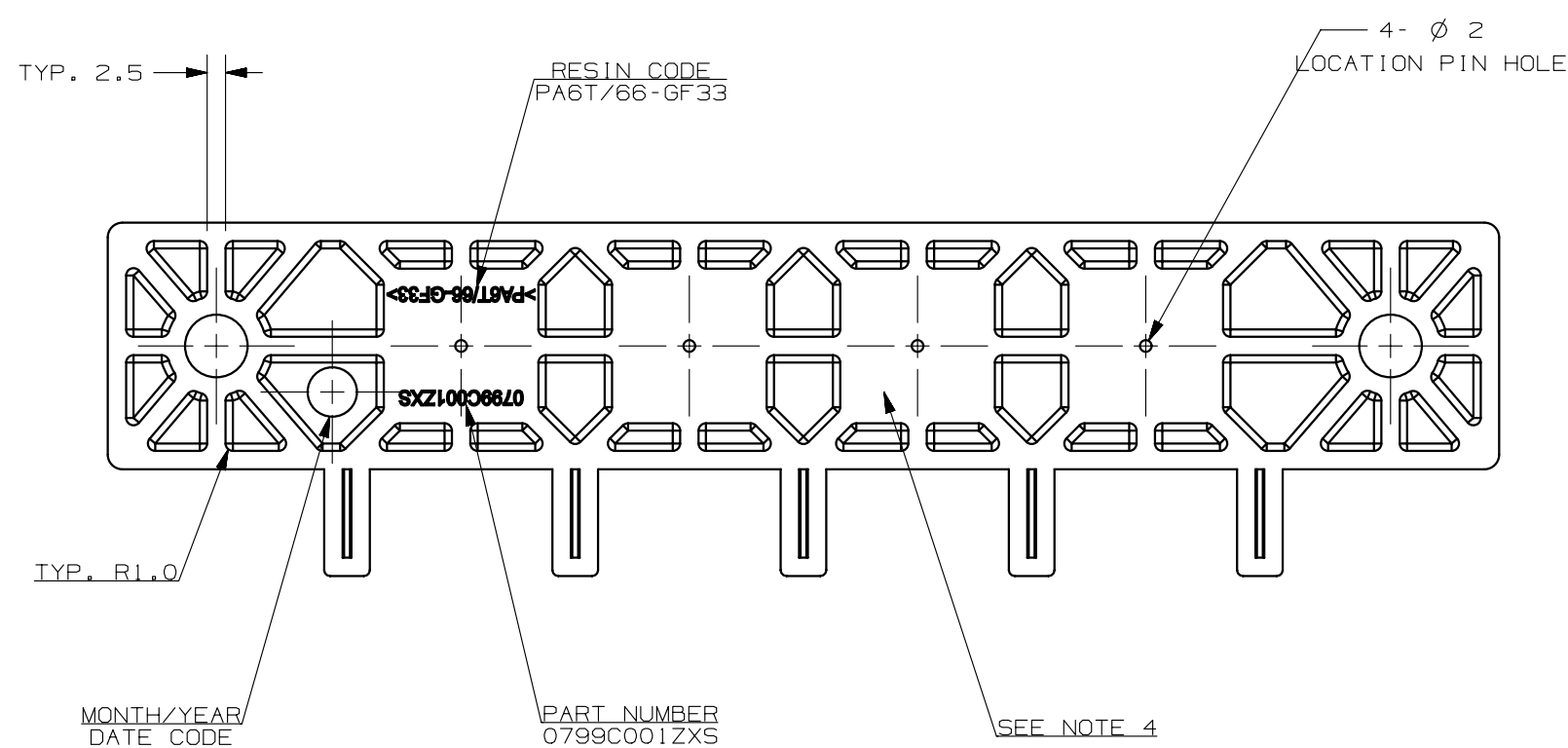
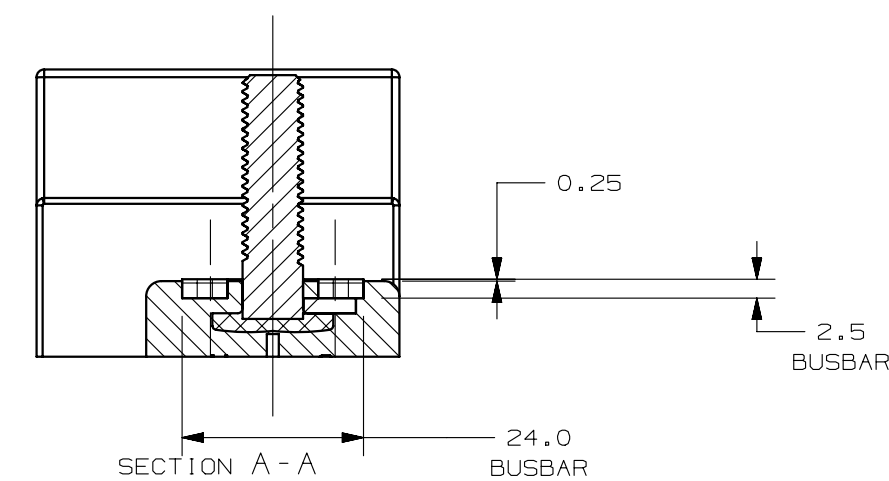
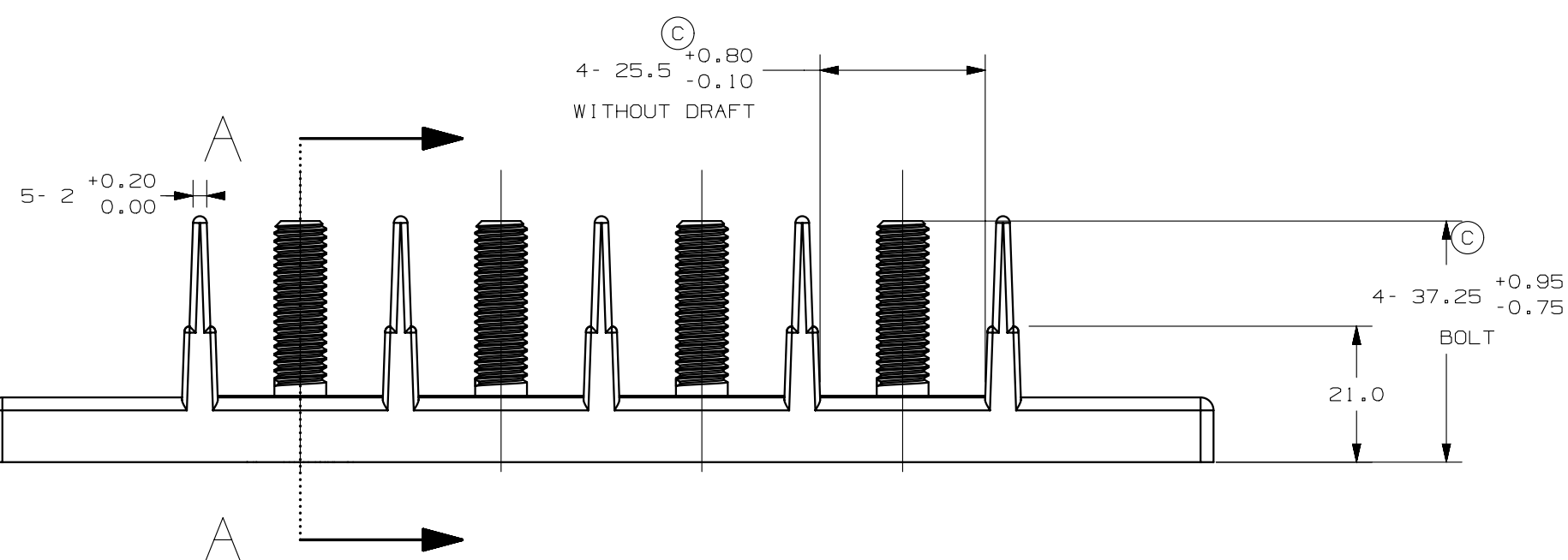
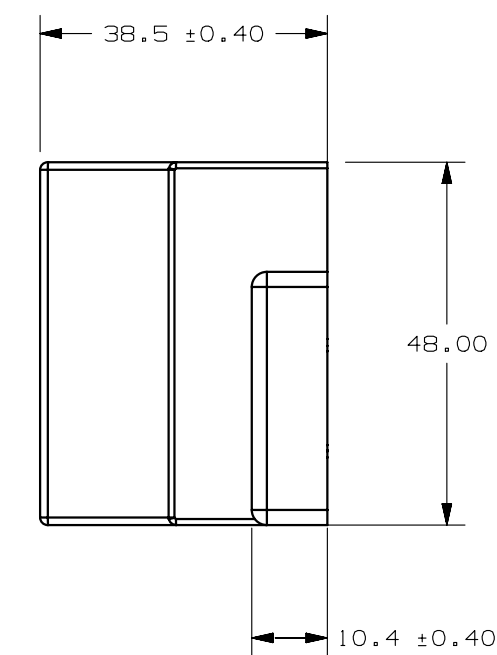
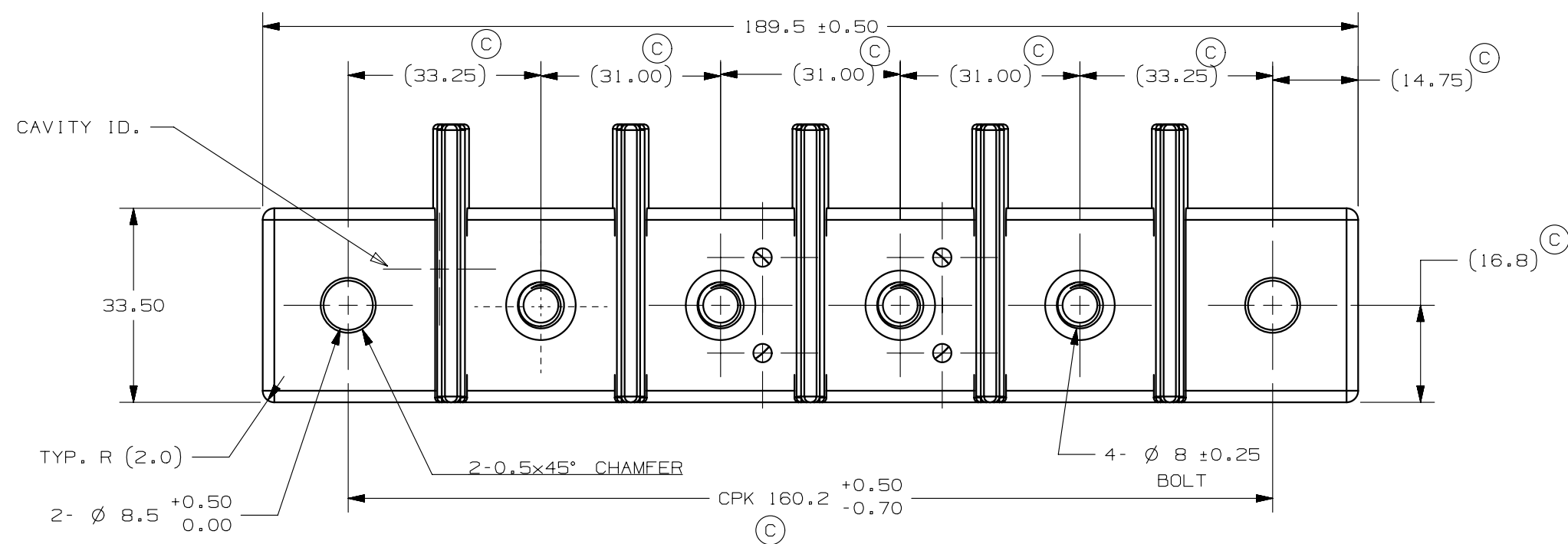


LTR	DATE	REVISION	CHK	APD
A	06/05/14	RELEASE FOR PRODUCTION, PVN, EC#510590	PVN	
B	07/30/14	UPDATE DIMENSIONS AND TOLERANCE TO MATCH PART, PVN, EC# 510841	PVN	
C	11/11/14	UPDATE DIMENSIONS AND TOLERANCE TO MATCH PART, ECA511259	JSN	



NO	COMPONENT NO	DESCRIPTION	QTY/M	U/M
-	-	-	-	-
-	-	-	-	-
-	-	-	-	-

BILL OF MATERIAL

UNLESS OTHERWISE SPECIFIED, DIMENSIONS ARE IN MILLIMETERS. DIMENSIONS IN BRACKETS [] ARE INCHES

UNLESS OTHERWISE SPECIFIED, DIMENSIONS DO NOT INCLUDE PLATING.

⊙	DENOTES CRITICAL CHARACTERISTICS.
CPK	DENOTES CPK DIMENSIONS, -MINIMUM CPK VALUE
ST	DENOTES A CHARACTERISTIC THAT PROVIDES AN INDICATION OF PROCESS PERFORMANCE. PROCEDURE FOR MEASUREMENT AND TRACKING TO BE DEFINED IN LITTELFUSE INSPECTION INSTRUCTIONS
CP	DENOTES CP DIMENSIONS, -MINIMUM CP VALUE MUST BE WITHIN THE DIMENSIONAL LIMITATIONS SHOWN ON DRAWING AND INITIALLY LOCATED TO ALLOW FOR MAXIMUM TOOL LIFE

COPIES TO	MATL SPEC																				
1 9 18	<table border="1"> <tr> <td colspan="4">FINISH</td> </tr> <tr> <td>DRW</td> <td>GMB</td> <td>DATE</td> <td>11/05/14</td> </tr> <tr> <td>5 14 23</td> <td>CHK</td> <td>DATE</td> <td>SUPER DR</td> </tr> <tr> <td>7 16 43</td> <td>APPD</td> <td>DATE</td> <td>FINSH GOOD WT</td> </tr> <tr> <td>8 17 53</td> <td></td> <td></td> <td>GRAMS/PIECE</td> </tr> </table>	FINISH				DRW	GMB	DATE	11/05/14	5 14 23	CHK	DATE	SUPER DR	7 16 43	APPD	DATE	FINSH GOOD WT	8 17 53			GRAMS/PIECE
FINISH																					
DRW		GMB	DATE	11/05/14																	
5 14 23		CHK	DATE	SUPER DR																	
7 16 43		APPD	DATE	FINSH GOOD WT																	
8 17 53				GRAMS/PIECE																	
2 10 19																					
3 12 20																					
4 13 21																					
6 15 33																					
7 16 43																					
8 17 53																					

TOLERANCES UNLESS OTHERWISE SPECIFIED (REF. ISO 2768-mK)	UP TO	OVER	UP TO	OVER	UP TO	OVER
DIMENSION	0.5 - 3	3 - 6	6 - 30	30 - 120	120 - 400	
TOLERANCE	+0.1	+0.1	+0.2	+0.3	+0.5	

3RD ANGLE PROJECTION	TITLE	REVISION	DRWG. NO.
	CF8 FUSE HOLDER 4-GANG	C	0799C001ZXS

METRIC ASSEMBLY

Littelfuse
DES PLAINES, ILLINOIS 60016

REVISION C
DRWG. NO. 0799C001ZXS

- NOTES:
- MATERIALS:
BOLTS: 1020 STL. OR EQUIV, HARDNESS RC27/36, 0.002 CLEAR TRIVALENT AND SEALER ZINC PLATED
BUS BAR: C110 COPPER, SOFT TEMPER, TIN PLATED MATTE FINISH, .0001-.0003 THK.
WASHER: ESP220 POLYESTER, 8.15 ID, 22.0 OD, 2.00 THK.
BASE: AMODEL 4133 VO, BLACK
 - M8 BOLT TORQUE: 25Nm MIN
 - MOUNTING TORQUE (USING M8 BOLTS & LOCK WASHERS): 25Nm MIN
 - ALLOW ROOM IN TOOL FOR FUTURE STUD LENGTH UP TO 47.5MM
 - PACK 25 UNITS PER BOX

CAD GENERATED DRAWING - NO PENCIL CHANGES ALLOWED