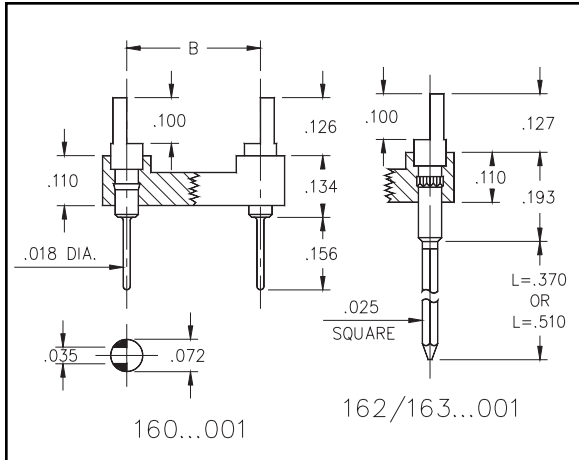


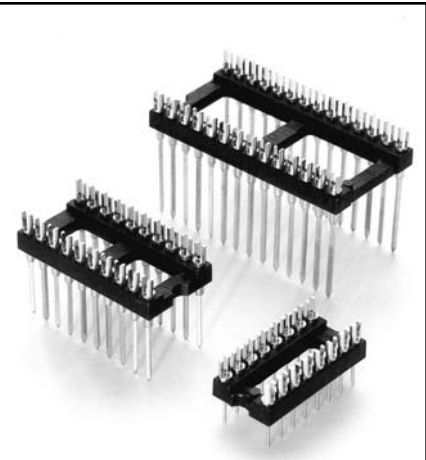


DUAL-IN-LINE SLOTTED HEADERS Solder Tail and Wrapost Open Frame

Series 160, 162, 163



- Series 160, 162, 163 DIL Headers are equipped with slotted heads to accept wires or component leads.
- Terminations are pluggable .018" diameter solder tails (M-M# 0282), see page 174 for details; or two-level wrapposts, (M-M# 1106) see page 185 for details.



Total number of pins				Quantity per tube	<div style="border: 1px solid black; border-radius: 50%; padding: 5px; display: inline-block;"> XX=Plating Code See Below </div>			<div style="border: 1px solid green; padding: 5px; display: inline-block;"> Ordering Information For RoHS compliance, select ◇ plating code. For the gold option (XX=10) also change part number from 16X-XX-XXX-00-001000 to 16X-10-XXX-00-001100 </div>			<div style="border: 1px solid green; padding: 5px; display: inline-block;"> RoHS 2002/95/EC </div>
	A	B	C		Solder Tail	2 Level Wrappost L = .370	3 Level Wrappost L = .510				
	10	0.5	0.2		0.3	41	160-XX-210-00-001000	162-XX-210-00-001000	163-XX-210-00-001000		
4	0.2	0.3	0.4	102	160-XX-304-00-001000	162-XX-304-00-001000	163-XX-304-00-001000				
6	0.3	0.3	0.4	67	160-XX-306-00-001000	162-XX-306-00-001000	163-XX-306-00-001000				
8	0.4	0.3	0.4	50	160-XX-308-00-001000	162-XX-308-00-001000	163-XX-308-00-001000				
10	0.5	0.3	0.4	40	160-XX-310-00-001000	162-XX-310-00-001000	163-XX-310-00-001000				
14	0.7	0.3	0.4	28	160-XX-314-00-001000	162-XX-314-00-001000	163-XX-314-00-001000				
16	0.8	0.3	0.4	25	160-XX-316-00-001000	162-XX-316-00-001000	163-XX-316-00-001000				
18	0.9	0.3	0.4	22	160-XX-318-00-001000	162-XX-318-00-001000	163-XX-318-00-001000				
20	1.0	0.3	0.4	20	160-XX-320-00-001000	162-XX-320-00-001000	163-XX-320-00-001000				
22	1.0	0.3	0.4	18	160-XX-322-00-001000	162-XX-322-00-001000	163-XX-322-00-001000				
24	1.2	0.3	0.4	16	160-XX-324-00-001000	162-XX-324-00-001000	163-XX-324-00-001000				
28	1.4	0.3	0.4	14	160-XX-328-00-001000	162-XX-328-00-001000	163-XX-328-00-001000				
20	1.0	0.4	0.5	20	160-XX-420-00-001000	162-XX-420-00-001000	163-XX-420-00-001000				
22	1.1	0.4	0.5	18	160-XX-422-00-001000	162-XX-422-00-001000	163-XX-422-00-001000				
24	1.2	0.4	0.5	16	160-XX-424-00-001000	162-XX-424-00-001000	163-XX-424-00-001000				
28	1.4	0.4	0.5	14	160-XX-428-00-001000	162-XX-428-00-001000	163-XX-428-00-001000				
32	1.6	0.4	0.5	12	160-XX-432-00-001000	162-XX-432-00-001000	163-XX-432-00-001000				
24	1.2	0.6	0.7	16	160-XX-624-00-001000	162-XX-624-00-001000	163-XX-624-00-001000				
28	1.4	0.6	0.7	14	160-XX-628-00-001000	162-XX-628-00-001000	163-XX-628-00-001000				
32	1.6	0.6	0.7	12	160-XX-632-00-001000	162-XX-632-00-001000	163-XX-632-00-001000				
36	1.8	0.6	0.7	11	160-XX-636-00-001000	162-XX-636-00-001000	163-XX-636-00-001000				
40	2.0	0.6	0.7	10	160-XX-640-00-001000	162-XX-640-00-001000	163-XX-640-00-001000				
42	2.1	0.6	0.7	9	160-XX-642-00-001000	162-XX-642-00-001000	163-XX-642-00-001000				
48	2.4	0.6	0.7	8	160-XX-648-00-001000	162-XX-648-00-001000	163-XX-648-00-001000				
50	2.5	0.6	0.7	8	160-XX-650-00-001000	162-XX-650-00-001000	163-XX-650-00-001000				
52	2.6	0.6	0.7	7	160-XX-652-00-001000	162-XX-652-00-001000	163-XX-652-00-001000				
50	2.5	0.9	1.0	8	160-XX-950-00-001000	162-XX-950-00-001000	163-XX-950-00-001000				
52	2.6	0.9	1.0	7	160-XX-952-00-001000	162-XX-952-00-001000	163-XX-952-00-001000				
64	3.2	0.9	1.0	6	160-XX-964-00-001000	162-XX-964-00-001000	163-XX-964-00-001000				
					SPECIFY PLATING CODE XX=	10 ◇	90	40 ◇			
					Pin Plating	10μ" Au	200μ" Sn/Pb	200μ" Sn			