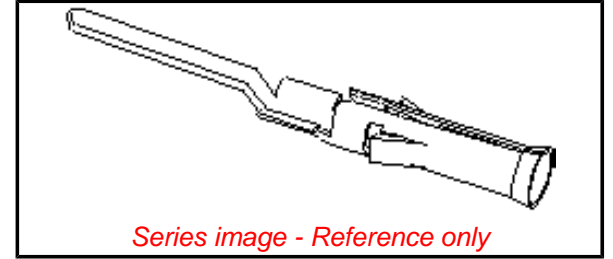


**Part Number:** [0002067103](#)  
**Status:** **Active**  
**Overview:** Standard .062"  
**Description:** 1.57mm (.062") Diameter, Standard .062" Pin and Socket PC Tail Terminal, Series 1779, Female, with 2.54µm (100µ") Tin (Sn) Plated Brass Contact, Bag Packaged



#### General

Product Family	Crimp Terminals
Series	<u>1779</u>
Comments	PC Tail Brass for Standard .062" Housing
Overview	<u>Standard .062"</u>
Product Name	Standard .062"

#### Physical

Gender	Female
Material - Metal	Brass
Material - Plating Mating	Tin
Material - Plating Termination	Tin
Packaging Type	Bag
Plating min: Mating (µin)	100
Plating min: Mating (µm)	2.50
Plating min: Termination (µin)	100
Plating min: Termination (µm)	2.50
Termination Interface: Style	Crimp or Compression
Wire Insulation Diameter	3.00mm (.120") max.
Wire Size AWG	N/A
Wire Size mm <sup>2</sup>	N/A

#### Material Info

Old Part Number	1779-(P909)L
-----------------	--------------

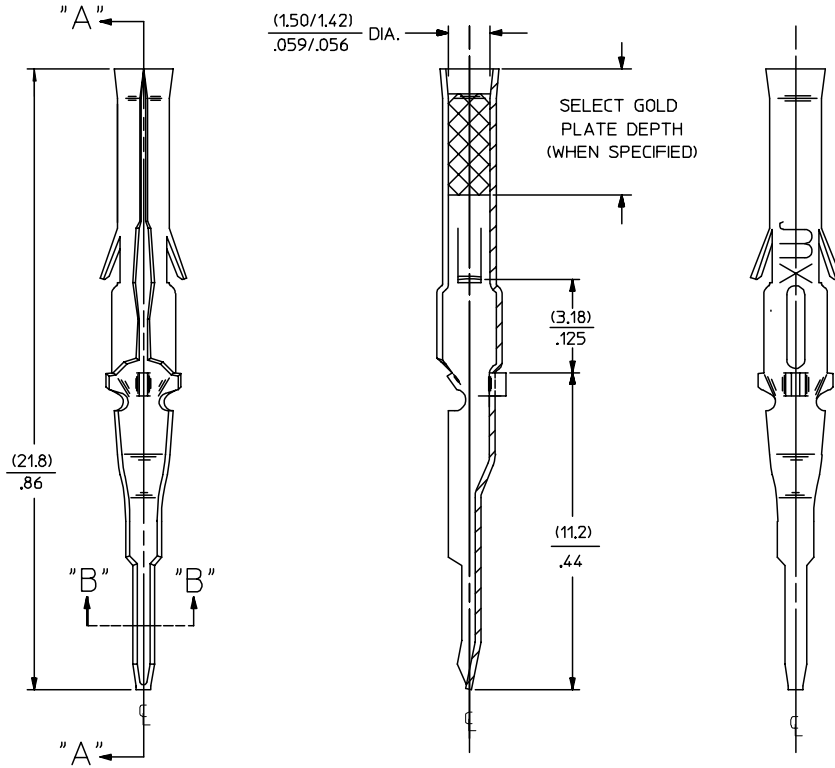
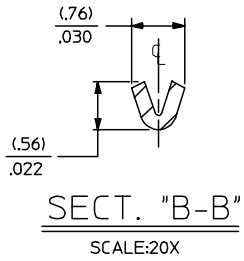
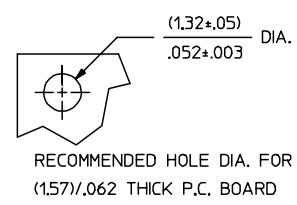
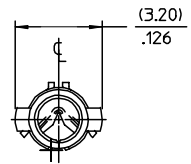
#### EU RoHS

**ELV and RoHS  
Compliant**

#### China RoHS



PART NO.	ENG. NO.
02-06-7103	1779-(P909)L
02-06-7104	1779-(P228)L



**LEGEND**

1779-(\*)\*\*\*)\*\*-\*

P=PREPLATE  
BLANK+POSTPLATE  
FINISH CODE

MATERIAL  
BLANK=BRASS (.020) / .008 THICK

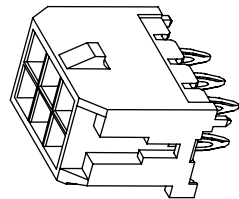
FORM  
L=LOOSE

- NOTES:
- MATERIAL: BRASS
  - FINISH:
    - 909 HOT TIN DIP\* (.00254) / .000100 MIN.
    - 228 SELECT GOLD PLATE (.00075) / .000030 MIN. IN CONTACT AREA, SELECT TIN\* (.00250) / .000100 MIN. IN TAIL AREA, OVER (.00125) / .000050 MIN. NICKEL OVERALL.
  - \* THE PRIMARY SHIPPING CARTON WILL BE LABELED, 'COMPLIANT TO RoHS DIRECTIVE 2002/95/EC AND ANNEX II OF DIRECTIVE 2000/53/EC', AND CARTONS WITHOUT THIS LABEL MAY CONTAIN PRODUCT WITH TIN-LEAD.
  - PRODUCT SPECIFICATION: PS-02-06.
  - PACKAGING INFORMATION: NOT AVAILABLE
  - TERMINAL FOR USE WITH (1.57) / .062 SERIES HOUSINGS.

OBSOLETE P/N EC NO: DRWN: JLOWE 2005/06/13 CHKD: ADERR 2005/06/16 APPR: FSMITH 2005/06/20	QUALITY SYMBOLS	GENERAL TOLERANCES (UNLESS SPECIFIED)	SCALE 8:1	DESIGN UNITS INCH	THIRD ANGLE PROJECTION	REVISE ON CAD ONLY
	▽ = 0 ▽ = 0	mm	INCH	DIMENSION STYLE		TITLE
		4 PLACES ± --- ± ---		MM/IN	DRAWN BY DATE	
		3 PLACES ± --- ± .005		GEP 1987/11/02	DATE	
	2 PLACES ± 0.13 ± .010		CHECKED BY DATE	DATE		
	1 PLACE ± 0.25 ± ---		RW 1987/11/02	DATE		
	ANGULAR ±1/2°		APPROVED BY DATE	MATERIAL NO.	DOCUMENT NO.	SHEET NO.
	DRAFT WHERE APPLICABLE MUST REMAIN WITHIN DIMENSIONS		RAS 1987/11/02	SEE CHART	SD-1779-*	1 OF 1
			THIS DRAWING CONTAINS INFORMATION THAT IS PROPRIETARY TO MOLEX INCORPORATED AND SHOULD NOT BE USED WITHOUT WRITTEN PERMISSION			

# 3.00mm (.118") Pitch Micro-Fit CPI™ Wire-to-Board Header

**44914**  
Dual Row, Vertical



### Features and Benefits

- Solderless board connection
- 2 to 24 circuits for design flexibility
- Fully isolated contacts prevent terminal damage
- Fully polarized to prevent mismatching

### Reference Information

Product Specification: PS-43045  
Packaging: Tray  
UL File No.: E29179  
CSA File No.: LR19980A  
TUV File No.: R72040445  
Mates With: 43025  
Designed In: Millimeters

### Electrical

Voltage: 250V  
Current: 5.0A max.  
Contact Resistance: 100 milliohms max.  
Dielectric Withstanding Voltage: 1500V AC

### Mechanical

Insertion Force to PCB: 10.9kgf max. (24 lbf) per terminal  
Retention Force to PCB: 3.6kgf max. (8lbf) per terminal  
Durability: 30 cycles

### Physical

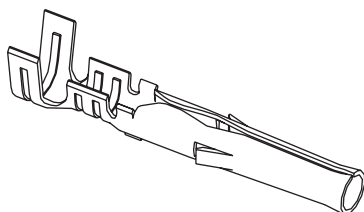
Housing: High-temperature LCP, UL 94V-0  
Contact: Brass  
Plating: Contact Area—Tin or Gold  
Solder Tail Area—Tin or Tin/Lead  
Underplating—Nickel  
PCB Thickness: 2.34mm (.092") min.  
Operating Temperature: -40 to +105°C

Circuits	Order No.			Lead-free
	Tin	15µm Gold	30µm Gold	
2	<a href="#">44914-0201</a>	<a href="#">44914-5202</a>	<a href="#">44914-5203</a>	Yes
4	<a href="#">44914-0401</a>	<a href="#">44914-5402</a>	<a href="#">44914-5403</a>	
6	<a href="#">44914-0601</a>	<a href="#">44914-5602</a>	<a href="#">44914-5603</a>	
8	<a href="#">44914-0801</a>	<a href="#">44914-5802</a>	<a href="#">44914-5803</a>	
10	<a href="#">44914-1001</a>	<a href="#">44914-6002</a>	<a href="#">44914-6003</a>	
12	<a href="#">44914-1201</a>	<a href="#">44914-6202</a>	<a href="#">44914-6203</a>	
14	<a href="#">44914-1401</a>	<a href="#">44914-6402</a>	<a href="#">44914-6403</a>	
16	<a href="#">44914-1601</a>	<a href="#">44914-6602</a>	<a href="#">44914-6603</a>	
18	<a href="#">44914-1801</a>	<a href="#">44914-6802</a>	<a href="#">44914-6803</a>	
20	<a href="#">44914-2001</a>	<a href="#">44914-7002</a>	<a href="#">44914-7003</a>	
22	<a href="#">44914-2201</a>	<a href="#">44914-7202</a>	<a href="#">44914-7203</a>	
24	<a href="#">44914-2401</a>	<a href="#">44914-7402</a>	<a href="#">44914-7403</a>	

Circuits	Order No.		Lead-free
	15µm Gold	30µm Gold	
2	<a href="#">44914-0202</a>	<a href="#">44914-0203</a>	No
4	<a href="#">44914-0402</a>	<a href="#">44914-0403</a>	
6	<a href="#">44914-0602</a>	<a href="#">44914-0603</a>	
8	<a href="#">44914-0802</a>	<a href="#">44914-0803</a>	
10	<a href="#">44914-1002</a>	<a href="#">44914-1003</a>	
12	<a href="#">44914-1202</a>	<a href="#">44914-1203</a>	
14	<a href="#">44914-1402</a>	<a href="#">44914-1403</a>	
16	<a href="#">44914-1602</a>	<a href="#">44914-1603</a>	
18	<a href="#">44914-1802</a>	<a href="#">44914-1803</a>	
20	<a href="#">44914-2002</a>	<a href="#">44914-2003</a>	
22	<a href="#">44914-2202</a>	<a href="#">44914-2203</a>	
24	<a href="#">44914-2402</a>	<a href="#">44914-2403</a>	

# 1.57mm (.062") Pin Diameter .062" Pin and Socket Female Terminals

**Standard .062"**



### Features and Benefits

- Available in Tin or Gold platings
- Available in Brass or Phosphor Bronze base materials
- Accommodates 18 to 30 gauge wire

### Reference Information

Packaging: Bag or reel  
UL File No.: E29179  
CSA File No.: LR19980  
Designed In: Inches

### Electrical

Contact Resistance: 3.2 milliohms max.  
Current: 5.0A

### Mechanical

Contact Insertion Force: 15.75N max.  
Durability: Tin—25 cycles max.  
Gold—50 cycles max.

### Physical

Contact: Brass or Phosphor Bronze  
Plating: Tin or Gold  
Operating Temperature: -40 to +105°C

Type	Plating	Crimp Wire Size	Insulation Diameter	Series	Order No.		Lead-free	
					Chain	Loose		
Standard Brass .008"	Tin	18-24	1.52/3.05 (.060/.120)	1561	<a href="#">02-06-1101</a>	<a href="#">02-06-1103</a>	Yes	
		24-30	1.02/2.29 (.040/.090)	1855	<a href="#">02-06-1131</a>	<a href="#">02-06-1132</a>		
	15µm Gold	18-24	1.52/3.05 (.060/.120)	1561	<a href="#">02-06-5100</a>	<a href="#">02-06-5103</a>		
		24-30	1.02/2.29 (.040/.090)	1855	<a href="#">02-06-5130</a>	<a href="#">02-06-5135</a>		
	30µm Gold	18-24	1.52/3.05 (.060/.120)	1561	<a href="#">02-06-5101</a>	<a href="#">02-06-5102</a>		
		24-30	1.02/2.29 (.040/.090)	1855	<a href="#">02-06-5138</a>	<a href="#">02-06-5139</a>		
	30µm Gold Contact Tin Crimp	18-24	1.52/3.05 (.060/.120)	1561	<a href="#">02-06-5108</a>	<a href="#">02-06-5109</a>		
		24-30	1.02/2.29 (.040/.090)	1855	<a href="#">02-06-5147</a>	<a href="#">02-06-5148</a>		
	Phos-Bronze	Tin .006"	18-24	1.52/3.05 (.060/.120)	4529	<a href="#">02-06-1104</a>		<a href="#">02-06-1105</a>
			18-24	1.52/3.05 (.060/.120)	1787	<a href="#">02-06-1201</a>		<a href="#">02-06-1202</a>
Tin .008"		18-24	1.52/3.05 (.060/.120)	2189	<a href="#">02-06-1231</a>	<a href="#">02-06-1232</a>		
		18-24	1.52/3.05 (.060/.120)	4529	<a href="#">02-06-5207</a>	<a href="#">02-06-5208</a>		
.006" Gold (15µm) .008" Gold (15µm)		18-24	1.52/3.05 (.060/.120)	1787	<a href="#">02-06-5201</a>	<a href="#">02-06-5202</a>		
		Tin		1779		<a href="#">02-06-7103</a>		
.008" PC Tail Brass for Standard .062" Housings Only	30µm Gold Tin Tail Area			1779		<a href="#">02-06-7104</a>		

Note: .006 Phosphor Bronze stock recommended for versions 15 circuits and larger

