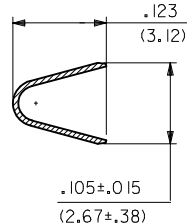
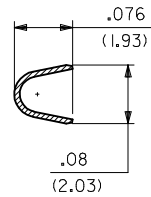


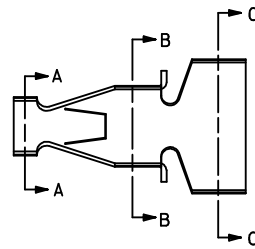
SECTION C-C



SECTION B-B

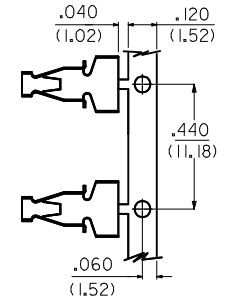


SECTION A-A



NOTES:

1. MATERIAL: 260 BRASS .008 THK
2. TERMINAL 4706-(****)* ACCEPTS 16 TO 18 AWG WIRE WITH INSULATION DIA OF .120 MAX
3. TERMINALS CONFORM TO SOLDERABILITY SPEC I52
4. PRODUCT SPECIFICATION: PS-4706-001



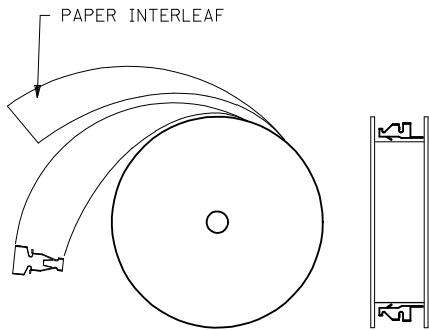
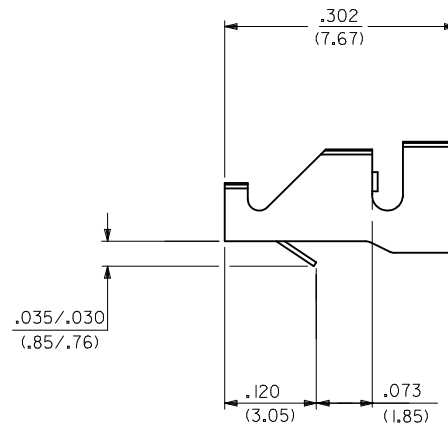
CARRIER DETAIL

4706-*(****)*
 BLANK=SEE SHT 1
 3=SEE SHEET 2
 FORM
 BLANK=CHAIN
 L=LOOSE

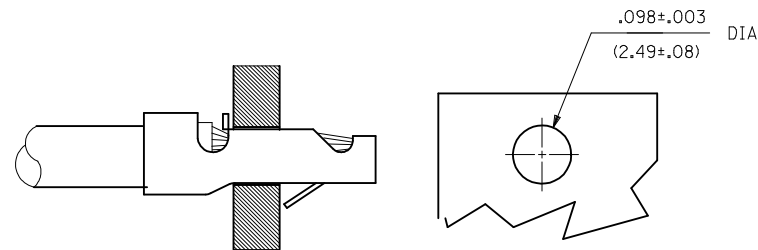
PLATING PER SDES-88

*(P909) OVERALL HOT TIN DIP: 2.54 MICROMETERS MIN

*THE PRIMARY SHIPPING CARTON WILL BE LABELED "COMPLIANT TO RoHS DIRECTIVE 2002/95/EC AND ELV ANNEX II OF DIRECTIVE 2000/53/EC." CARTONS WITHOUT THIS LABEL MAY CONTAIN PRODUCT WITH TIN-LEAD PLATING.



WINDING SPEC



RECOMMENDED PC BOARD

4706-(****)*

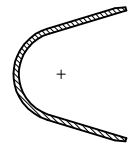
EDP NO.	ENG NO		
02-09-2105	4706-(P909)		
-	- ()		
-	- ()		

CHANGE TO ME10 EC NO: UCP2005-0966 DRAWN:ADRIANOL 2004/11/19 CHKD:SAMIEC 2004/11/05 APPR:MMARGULIS 2004/11/05	QUALITY SYMBOLS ▽=0 ▽=0
REV J1	DESCRIPTION

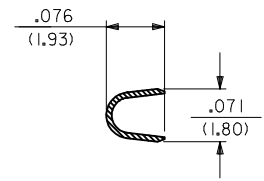
GENERAL TOLERANCES (UNLESS SPECIFIED)	
4 PLACES ± --- ± ---	
3 PLACES ± --- ± .010	
2 PLACES ± 0.25 ± .014	
1 PLACE ± 0.36 ± ---	
ANGULAR ±1/2°	
DRAFT WHERE APPLICABLE MUST REMAIN WITHIN DIMENSIONS	

DRAWN BY SAMIEC	DATE 02/25/92
CHECKED BY PATEL	DATE 02/25/92
APPROVED BY LENZ	DATE 02/25/92
MATERIAL NO. SEE CHART	DOCUMENT NO. SD-4706

DIMENSION STYLE IN/MM	.062 SCALE ---	DESIGN UNITS INCH	THIRD ANGLE PROJECTION
TITLE STRAIN RELIEF TERMINAL		MOLEX INCORPORATED	
MATERIAL NO. SEE CHART		DOCUMENT NO. SD-4706	SHEET NO. 1 OF 2
THIS DRAWING CONTAINS INFORMATION THAT IS PROPRIETARY TO MOLEX INCORPORATED AND SHOULD NOT BE USED WITHOUT WRITTEN PERMISSION			



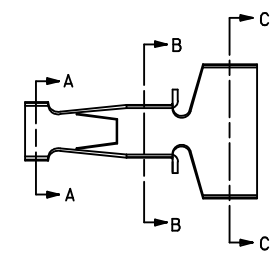
SECTION C-C



SECTION B-B



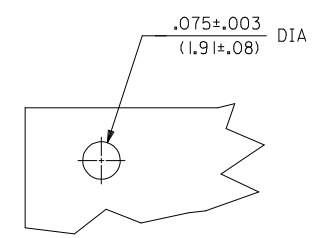
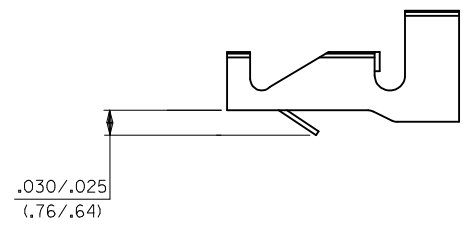
SECTION A-A



NOTES:

1. THIS PART IS THE SAME AS SHEET 1 EXCEPT AS SHOWN
2. MATERIAL: 260 BRASS .006 THK
3. FINISH: (909) * OVERALL HOT TIN DIP: 2.54 MICROMETERS MIN.
4. TERMINAL 4706-3(***)* ACCEPTS 18 TO 24 AWG WIRE WITH INSULATION DIA OF .120 MAX

*THE PRIMARY SHIPPING CARTON WILL BE LABELED "COMPLIANT TO ROHS DIRECTIVE 2002/95/EC AND ELV ANNEX II OF DIRECTIVE 2000/53/EC." CARTONS WITHOUT THIS LABEL MAY CONTAIN PRODUCT WITH TIN-LEAD PLATING.



RECOMMENDED PC BOARD
.062 THK

4706-3(***)*

EDP NO.	ENG NO.		
02-07-2101	4706-3(P909)		

CHANGE TO ME10 EC NO: DRWINADRATNOL 2004/11/08 CHKD: SAMEC 2004/11/08 APPR: MARGULIS 2004/11/08	QUALITY SYMBOLS	GENERAL TOLERANCES (UNLESS SPECIFIED)	DIMENSION STYLE	SCALE	DESIGN UNITS	THIRD ANGLE PROJECTION
	▼=0 ▽=0	mm INCH 4 PLACES ± --- ± --- 3 PLACES ± --- ± .010 2 PLACES ± 0.25 ± .014 1 PLACE ± 0.36 ± --- ANGULAR ± 1/2°	IN/MM	---	INCH	
	DESCRIPTION	TITLE	DRAWN BY	DATE	MOLEX INCORPORATED	
	J1	STRAIN RELIEF TERMINAL	SAMIEC	02/25/92	SEE CHART	SD-4706

DRAFT WHERE APPLICABLE MUST REMAIN WITHIN DIMENSIONS

THIS DRAWING CONTAINS INFORMATION THAT IS PROPRIETARY TO MOLEX INCORPORATED AND SHOULD NOT BE USED WITHOUT WRITTEN PERMISSION