

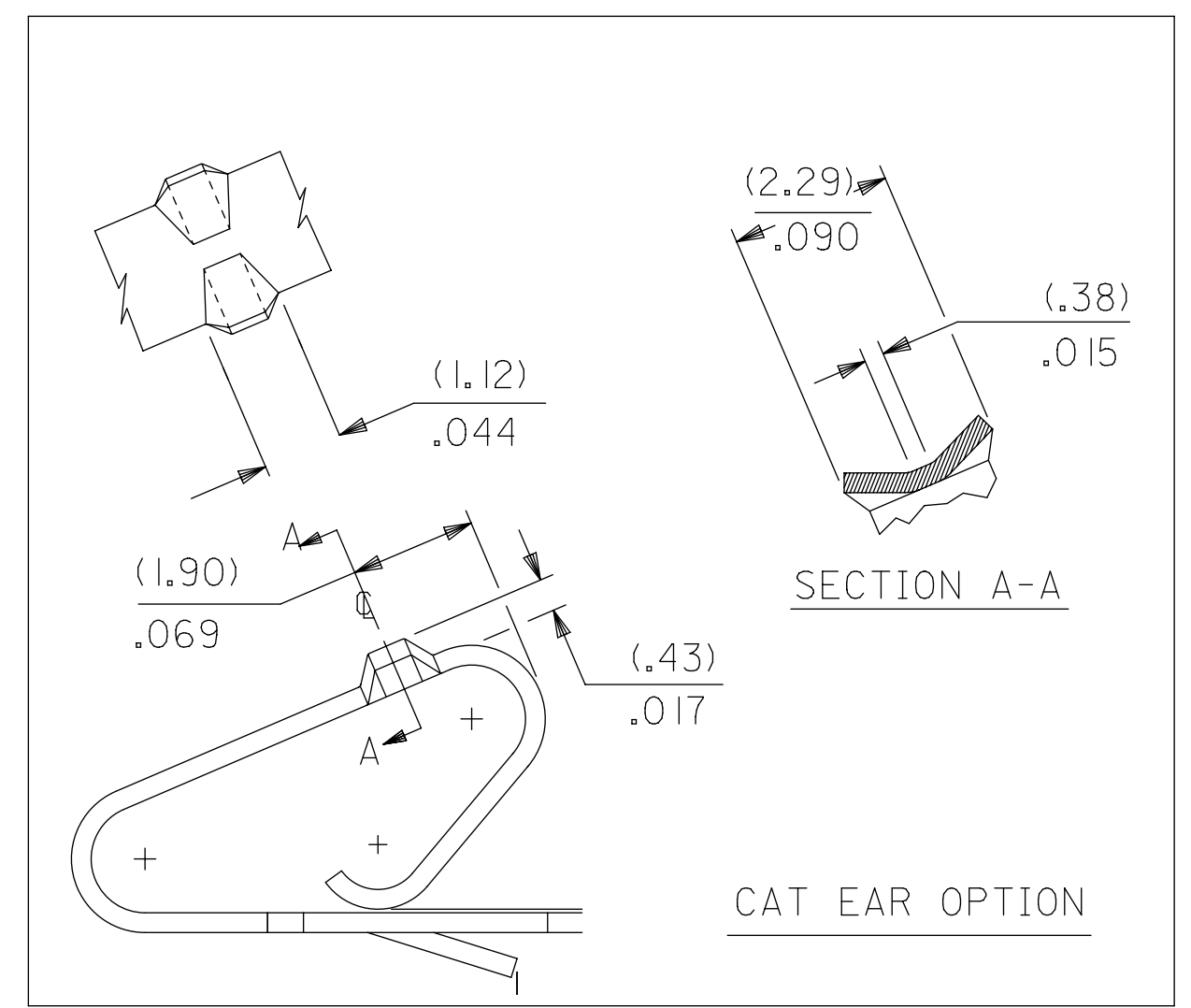
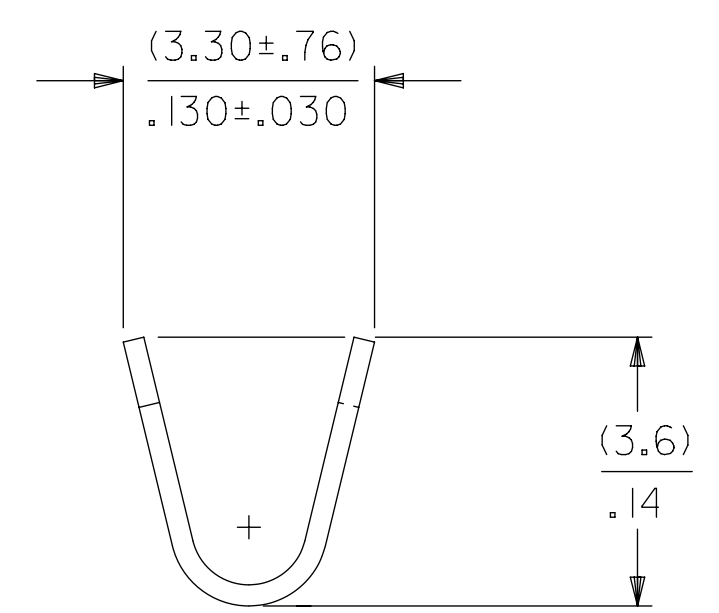
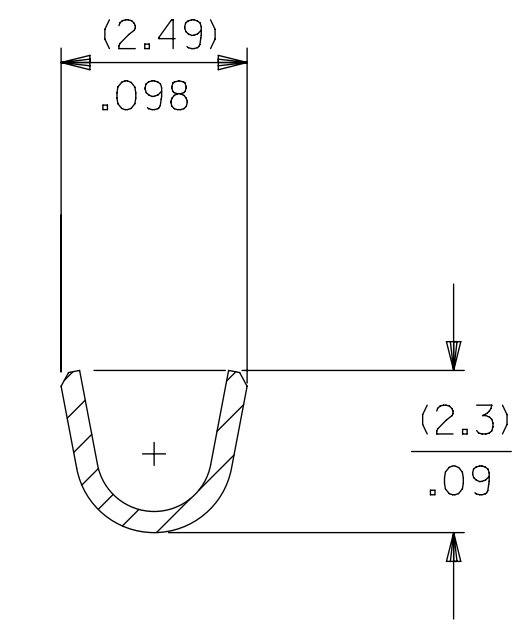
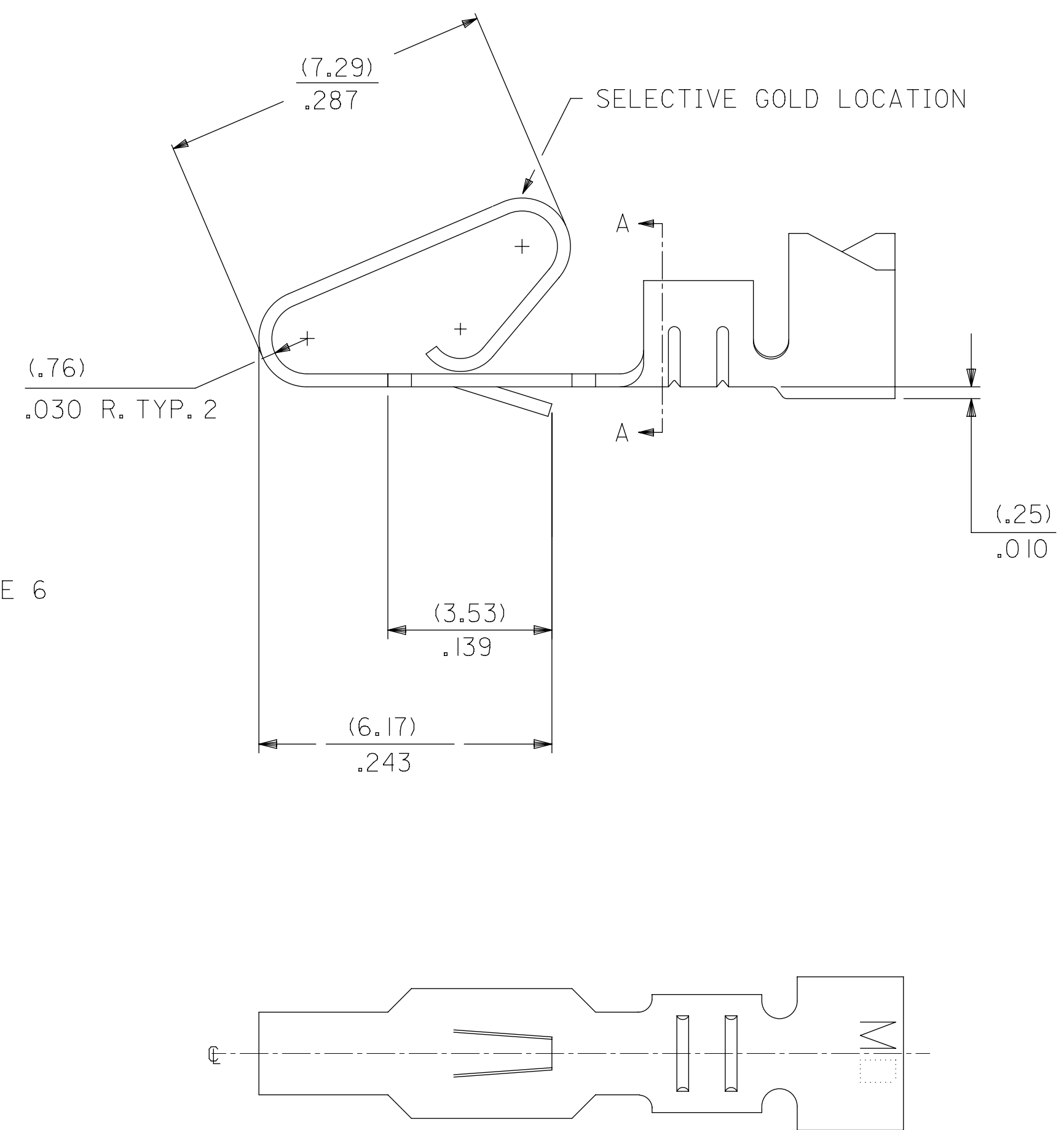
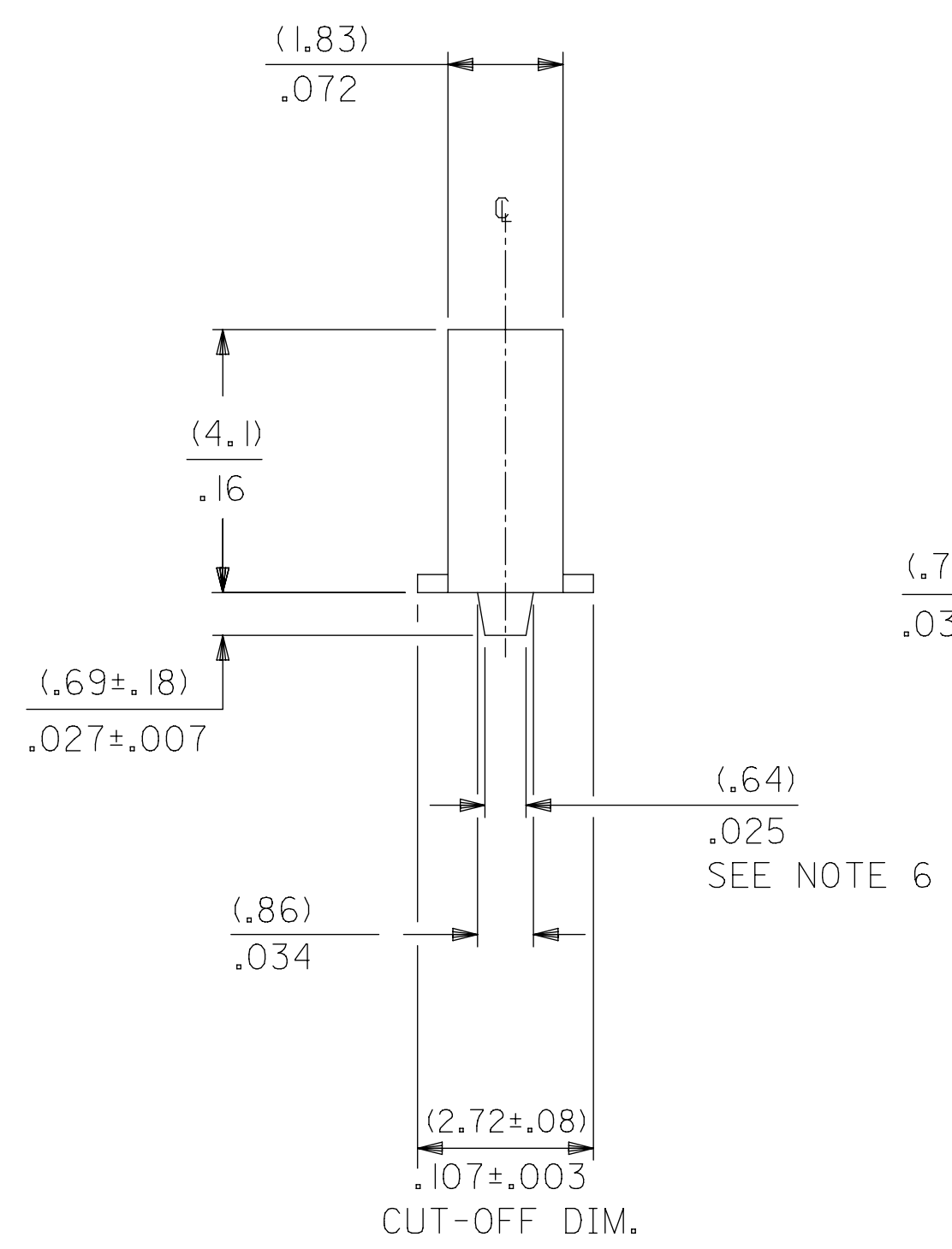
MATERIAL CODE
 (.27)/.0106 THK
 1=BRASS
 3=PHOS BRONZE

OPTION CODE
 BLANK=AS SHOWN
 C=CAT EAR OPTION

WINDING SPEC.
 A=CHAIN, PER WINDING DETAIL "A"
 BLANK=CHAIN, PER WINDING DETAIL "B"
 L=LOOSE

FINISH:

(P909) OVERALL HOT TIN DIP: (0.00254)/.000100 MIN.
 (122) OVERALL TIN: (0.00381)/.000150 MIN.
 OVER (0.00076)/.000030 MIN. NICKEL
 (154) OVERALL TIN: (0.00254)/.000100 MIN.
 OVER (0.00127)/.000050 MIN. NICKEL
 (224) OVERALL MATTE TIN: (0.00508)/.000200 MIN.
 OVER (0.00127)/.000050 MIN. NICKEL
 (550) SELECT GOLD: (0.00038)/.000015 MIN.
 OVERALL GOLD FLASH: (0.00005)/.000002 MIN.
 OVERALL NICKEL UNDERPLATE: (0.00076)/.000030 MIN.
 (555) SELECT GOLD: (0.00038)/.000015 MIN.
 OVERALL NICKEL UNDERPLATE: (0.00076)/.000030 MIN.
 (558) SELECT GOLD: (0.00076)/.000030 MIN.
 OVERALL GOLD FLASH: (0.00005)/.000002 MIN.
 OVERALL NICKEL UNDERPLATE: (0.00127)/.000050 MIN.
 (561) SELECT GOLD: (0.00076)/.000030 MIN.
 OVERALL NICKEL UNDERPLATE: (0.00127)/.000050 MIN.
 (591) SELECT GOLD: (0.00127)/.000050 MIN.
 OVERALL GOLD FLASH: (0.00005)/.000002 MIN.
 OVERALL NICKEL UNDERPLATE: (0.00127)/.000050 MIN.



- NOTES:
1. MATERIAL: SEE LEGEND
 2. FINISH: SEE LEGEND
 3. PRODUCT SPECIFICATION PS-08-50.
 4. PACKAGING SPECIFICATION: LOOSE TERMINALS: PER PK-2759-001
CHAIN FORM TERMINALS: PK-2759-002
 5. DIMENSIONS GIVEN ACROSS CENTERLINES ARE SYMMETRICAL ABOUT THOSE CENTERLINES WITHIN HALF THE TOTAL TOLERANCE.
 6. (0.86 ±0.05)/.034 ±.002 IS AN OPTIONAL DESIGN.
 7. CRIMP ACCEPTS 18 TO 24 AWG WIRE WITH (2.79)/.110 MAX. INSULATION DIAMETER. AND CAN ACCEPT (3.00)/.118 MAX. INSULATION DIAMETER WITH SPECIAL TOOLING.
 8. TERMINAL FOR USE IN 2139, 3001, 3069, AND 91813 SERIES HOUSINGS WITH (2.54)/.100 MAX. INSULATION DIAMETER, 2574, 6422, AND 5239 SERIES HOUSINGS WITH (2.79)/.110 MAX. INSULATION DIAMETER, AND 41695 SERIES HOUSING WITH (3.00)/.118 MAX. INSULATION DIAMETER.
 9. THIS PART CONFORMS TO CLASS B REQUIREMENTS OF COSMETIC SPECIFICATION PS-45499-002.

THIS DRAWING CONTAINS INFORMATION THAT IS PROPRIETARY TO MOLEX ELECTRONIC TECHNOLOGIES, LLC AND SHOULD NOT BE USED WITHOUT WRITTEN PERMISSION									
SYMBOLS		DIMENSION UNITS		SCALE		CURRENT REV DESC: NOTE 4 UPDATED			
▽ = 0	▽ = 0	MM/IN	1:1						
▽ = 0	▽ = 0	GENERAL TOLERANCES (UNLESS SPECIFIED)				EC NO: 605479			
▽ = 0	▽ = 0		MM	INCH		DRWN: SS06		2018/09/20	
▽ = 0	▽ = 0	4 PLACES ±	±	±		DRWN: ISHWARG		2018/10/05	
▽ = 0	▽ = 0	3 PLACES ±	0.25	± 0.014		APPR: ISHWARG		2018/10/05	
▽ = 0	▽ = 0	2 PLACES ±	0.36	±		INITIAL REVISION:			
▽ = 0	▽ = 0	1 PLACE ±	0.43	±		DRWN: SAMIEC		1986/06/03	
▽ = 0	▽ = 0	0 PLACES ±	0.5	±		APPR: FSMITH		2012/03/20	
▽ = 0	▽ = 0	ANGULAR TOL ± 0.5°				THIRD ANGLE PROJECTION		DRAWING SERIES	
▽ = 0	▽ = 0	DRAFT WHERE APPLICABLE MUST REMAIN WITHIN DIMENSIONS				D-SIZE 2478		MATERIAL NUMBER CUSTOMER SHEET NUMBER	
▽ = 0	▽ = 0					SEE CHART		GENERAL MARKET 1 OF 2	

molex

CRIMP TERMINAL
 .156 CENTERS 18 TO 24 GA WIRE

PRODUCT CUSTOMER DRAWING

DOCUMENT NUMBER: **SD-2478**
 DOC TYPE: PSD
 DOC PART: 001
 REVISION: Y2

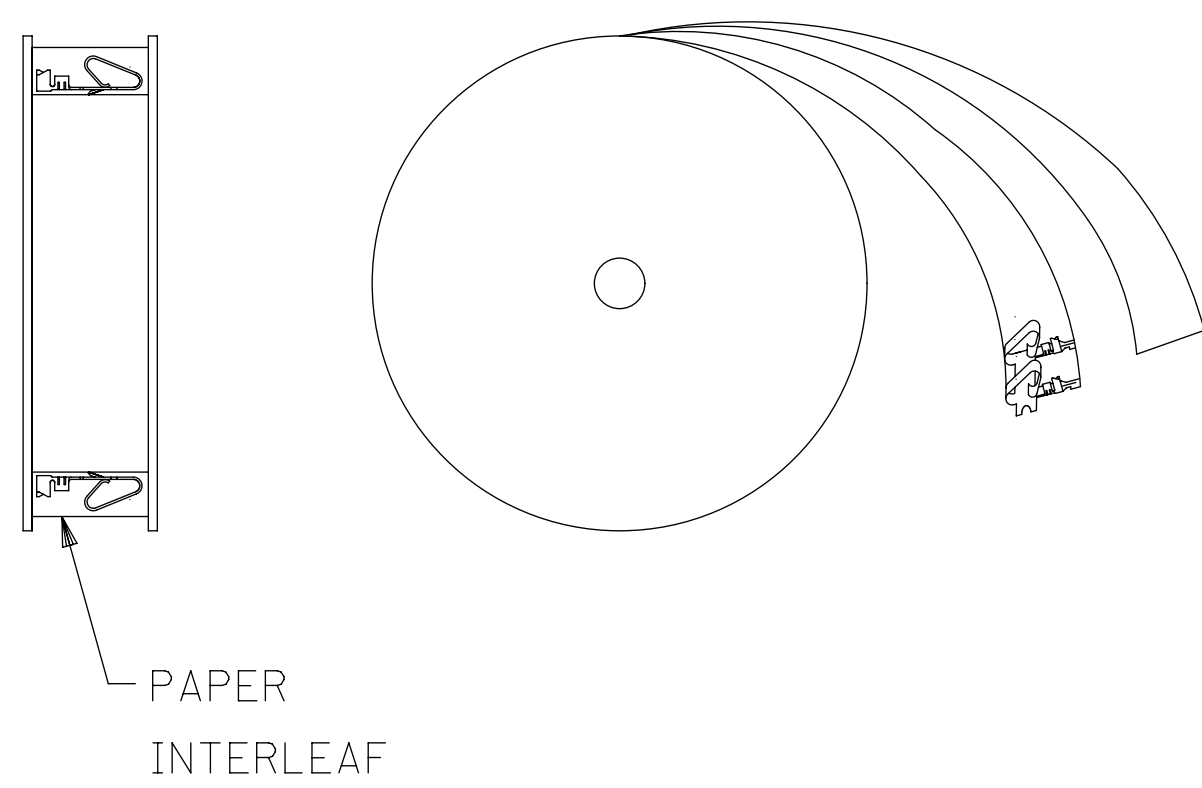
2478-1-(***)*		
PART NO.	ENG. NO.	
08-50-0105	2478-1-(P909)	
08-50-0106	2478-1-(P909)L	
08-56-0105	2478-1-(550)	
08-56-0106	2478-1-(550)L	
08-55-0103	2478-1-(555)	
08-55-0104	2478-1-(555)L	
08-50-0119	2478-1-(122)	
08-50-0120	2478-1-(122)L	
08-50-0271	2478-1-(P909)A	
08-50-0015	2478-1-(154)	
08-50-0016	2478-1-(154)L	
08-50-0063	2478-1-(224)	
08-50-0064	2478-1-(224)L	
08-55-0133	2478-1-(561)	
08-55-0134	2478-1-(561)L	

2478-3-(***)*		
PART NO.	ENG. NO.	
08-52-0071	2478-3-(P909)	
08-52-0072	2478-3-(P909)L	
08-65-0114	2478-3-(555)	
08-65-0115	2478-3-(555)L	
08-52-0811	2478-3-(154)	
08-52-0812	2478-3-(154)L	
08-50-0281	2478-3-(122)	
	2478-3-(122)L	
08-58-0121	2478-3-(550)	
08-58-0122	2478-3-(550)L	
08-58-0103	2478-3-(591)	
08-58-0104	2478-3-(591)L	
08-58-0114	2478-3-(558)	
08-58-0115	2478-3-(558)L	

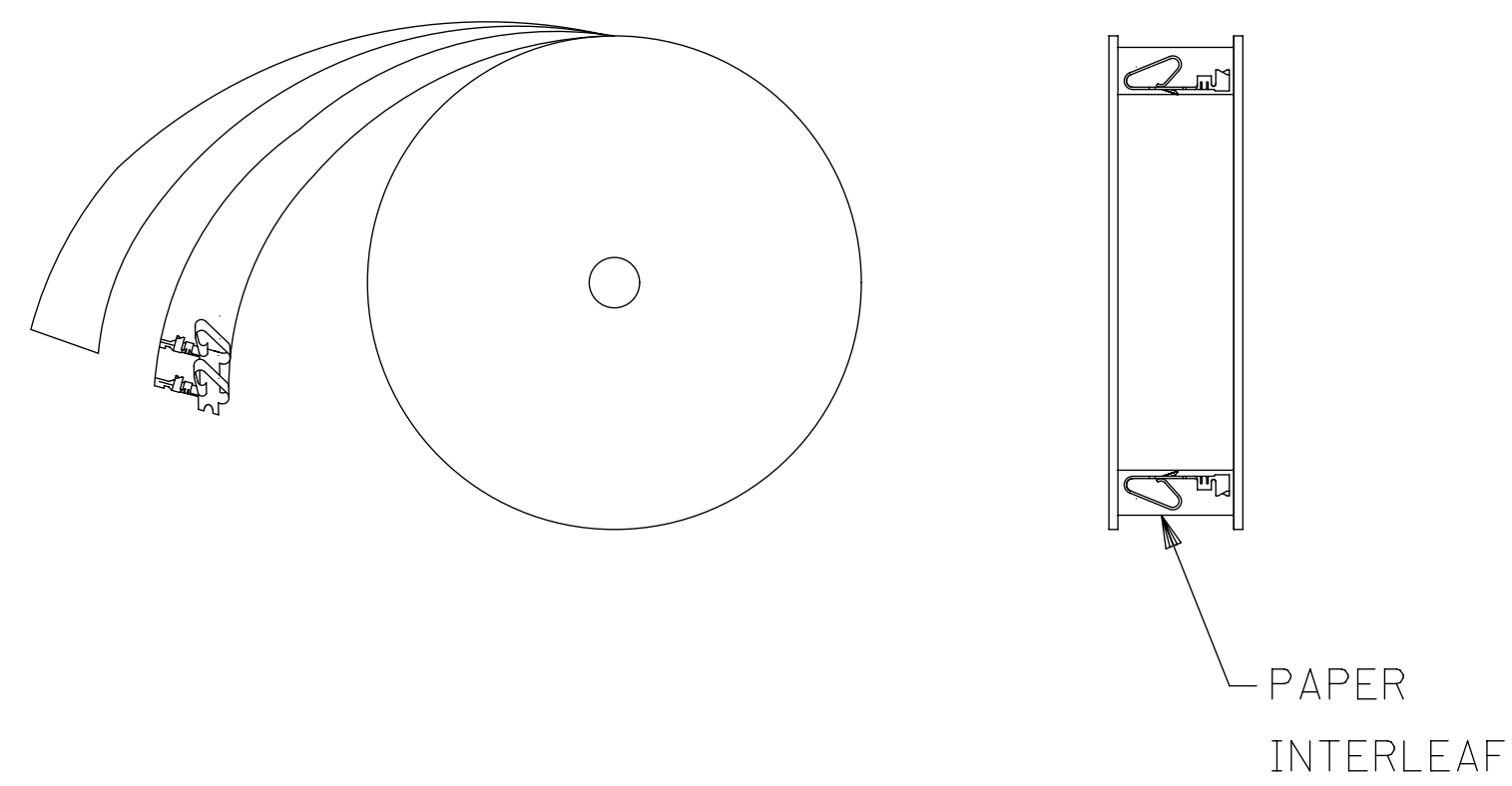
2478-1C-(***)*		
PART NO.	ENG. NO.	
08-50-0091	2478-1C-(154)	
08-50-0093	2478-1C-(154)L	

2478-3C-(***)*		
PART NO	ENG NO	
08-52-0044	2478-3C-(P909)	
08-52-0045	2478-3C-(P909)L	
08-52-0023	2478-3C-(154)	
08-52-0024	2478-3C-(154)L	

WINDING DETAIL "A"



WINDING DETAIL "B"



THIS DRAWING CONTAINS INFORMATION THAT IS PROPRIETARY TO MOLEX ELECTRONIC TECHNOLOGIES, LLC AND SHOULD NOT BE USED WITHOUT WRITTEN PERMISSION										
SYMBOLS	DIMENSION UNITS		SCALE		CURRENT REV DESC: NOTE 4 UPDATED					
	MM/IN		1:1							
▽ = 0 ▽ = 0 ▽ = 0 ▽ = 0 ▽ = 0 ▽ = 0 ▽ = 0 ▽ = 0 ▽ = 0	GENERAL TOLERANCES (UNLESS SPECIFIED)				EC NO: 605479					
	4 PLACES ±		±		DRWN: SS06 2018/09/20					
	3 PLACES ±		± 0.01		CHK'D: ISHWARG 2018/10/05					
	2 PLACES ±		0.25 ± 0.014		APPR: ISHWARG 2018/10/05					
	1 PLACE ±		0.36 ±		INITIAL REVISION:					
	0 PLACES ±		±		DRWN: SAMIEC 1986/06/03 APPR: FSMITH 2012/03/20					
ANGULAR TOL ± 0.5 °		THIRD ANGLE PROJECTION			DRAWING		SERIES			
DRAFT WHERE APPLICABLE MUST REMAIN WITHIN DIMENSIONS				D-SIZE		2478		MATERIAL NUMBER		CUSTOMER
						SEE CHART		GENERAL MARKET		SHEET NUMBER
										2 OF 2

molex

CRIMP TERMINAL
.156 CENTERS 18 TO 24 GA WIRE

PRODUCT CUSTOMER DRAWING

DOCUMENT NUMBER	DOC TYPE	DOC PART	REVISION
SD-2478	PSD	001	Y2