

NOTES:

1) MATERIALS:

- HOUSING: GLASS FILLED LCP (LIQUID CRYSTAL POLYMER), UL 94V-0, COLOR: BLACK.
- MOLDED STICK: GLASS FILLED LCP (LIQUID CRYSTAL POLYMER), UL 94V-0, COLOR: BLACK.
- MALE TERMINAL: PHOSPHOR BRONZE
- OUTER SHELL: DEEP DRAWN STEEL.

2) PLATING :

- TERMINAL: .000030/(0.000762) MINIMUM GOLD IN SELECTIVE AREA; .000100/(0.00254) MINIMUM TIN IN SELECTIVE AREA; OVER NICKEL UNDERPLATE OVERALL.
- OUTER SHELL: .000150/(0.00381) MINIMUM TIN OVER .000050/(0.00127) MINIMUM NICKEL OVER COPPER FLASH OVERALL (OPTIONAL).

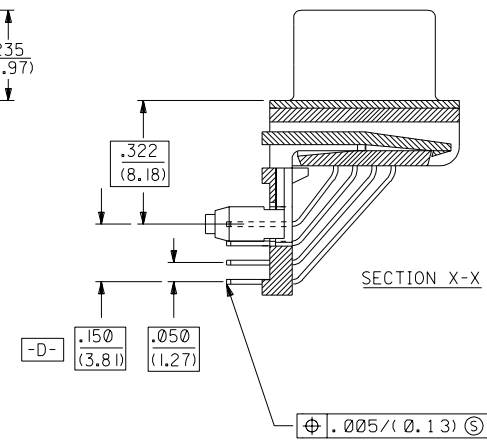
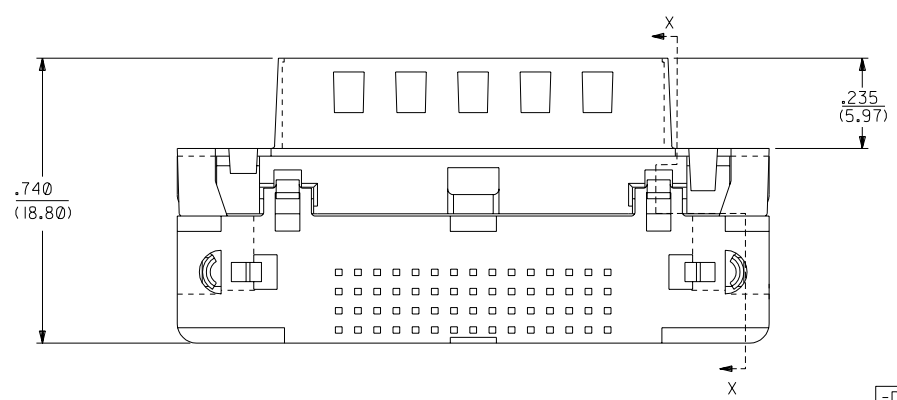
3) CONFORMS TO PRODUCT SPECIFICATION PS-70928.

4) PARTS TO BE PACKAGED IN TUBES.

5) THREAD GAUGE MAY REQUIRE UP TO 1 IN.-LB. OF TORQUE DURING GAUGING PROCESS.

NOTE FOR LEAD FREE CONVERSION:

THE PRIMARY SHIPPING CARTON WILL BE LABELED "COMPLIANT TO ROHS DIRECTIVE 2002/95/EC AND ELV ANNEX II OF DIRECTIVE 2000/53/EC". CARTONS WITHOUT THIS LABEL MAY CONTAIN PRODUCT WITH LEAD.

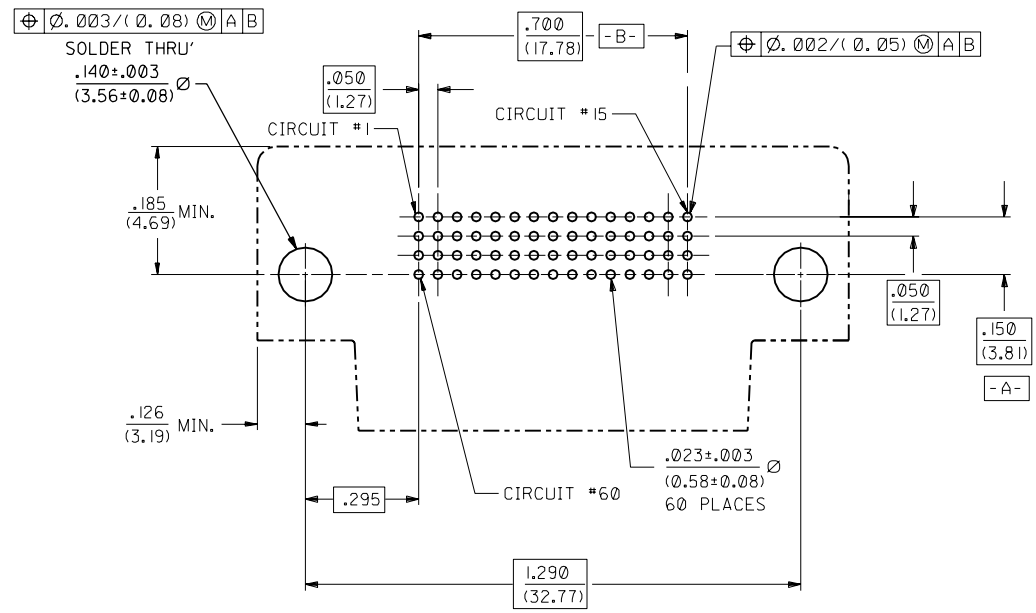


PART NUMBER	ENGINEERING NUMBER	DIM. 'A'
015-92-2250	70929-0001	.092±.012
015-92-2253	70929-0002	.104±.012

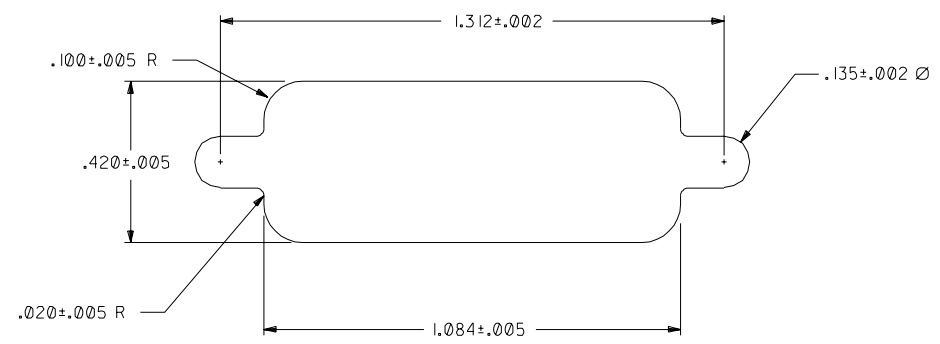
DIMENSIONS SHOWN (METRIC) INCH		UNLESS OTHERWISE SPECIFIED TOLERANCES: ANGULAR ± 1/2°	
3 PLACE	±	---	---
2 PLACE	±	---	±
1 PLACE	---	±	---
DRAFT WHERE APPLICABLE MUST REMAIN WITHIN DIMENSIONS			
DRWG. BY: MOS	CHK'D. BY: CAB	FILE NAME: 570929X1.DGN	SCALE: 4: 1
SEE CHART		SDA-70929-0001	
MOLEX INCORPORATED		SHEET NO. 1 OF 2	
LITSE, ILL. 60532		U.S.A. 12/17/90	
PART NO. SDA-70929-0001		DRWG. NO. SDA-70929-0001	
THIS DRAWING CONTAINS INFORMATION THAT IS PROPRIETARY TO MOLEX INC. AND SHOULD NOT BE USED WITHOUT WRITTEN PERMISSION.			

G	LEADFREE ECN# UCP2004-1998 DMORGAN 04/04/14
F1	REVISED PER ECN U8-1031 O'DELL 97/10/24
F	REVISED PER ECN U70417 SCHMIDG 96/11/08
E	REVISED PER ECN U6-1485 DRS 05/29/96
D1	REVISED PER ECN U6-1233 DRS 04/03/96
D	REVISED PER ECN U6-0641 DRS 12/01/95
C2	MODIFIED PER ECN U4-0503 DKS 4-15-94
C1	MODIFIED PER ECN U4-1051 DRS 07.15.92
C	MODIFIED PER ECN U2-0667 MOS 4.28.92
B	MODIFIED PER ECR U1-2081 MOS 10.29.91
A	RELEASED PER ECR U10958 MOS 5.16.91

70929



RECOMMENDED P.C.B. LAYOUT
COMPONENT SIDE



RECOMMENDED PANEL CUT-OUT

F1	SEE SHEET I
E	SEE SHEET I

DIMENSIONS SHOWN (METRIC) INCH		▽ = 0		▼ = 0		REVISE ONLY ON CAD SYSTEM									
UNLESS OTHERWISE SPECIFIED TOLERANCES ANGULAR ± 1/2°															
3 PLACE ± --- ---		INCH		METRIC											
2 PLACE ± --- ± ---															
1 PLACE --- ± ---															
DRAWING WHERE APPLICABLE MUST REMAIN WITHIN DIMENSIONS															
DRAWN BY: MOS		CHK'D BY: CAB		PART NO. SDA-70929-0001		DRWG. NO. SDA-70929-0001									
APP'D BY: CAB		SCALE: 4: 1		FILE NAME: S70929X1A.DWG		SHEET NO. 2									
				DATE: 4/15/94		U.S.A.									
<table border="0"> <tr> <td colspan="2">MOLEX INCORPORATED</td> <td colspan="2">L15LE,ILL. 60532</td> <td colspan="2">U.S.A.</td> <td colspan="2"></td> </tr> </table>								MOLEX INCORPORATED		L15LE,ILL. 60532		U.S.A.			
MOLEX INCORPORATED		L15LE,ILL. 60532		U.S.A.											
THIS DRAWING CONTAINS INFORMATION THAT IS PROPRIETARY TO MOLEX INC. AND SHOULD NOT BE USED WITHOUT WRITTEN PERMISSION.															