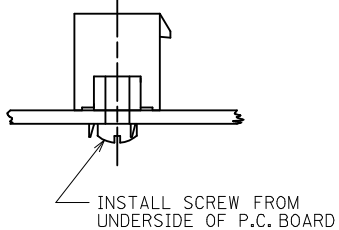
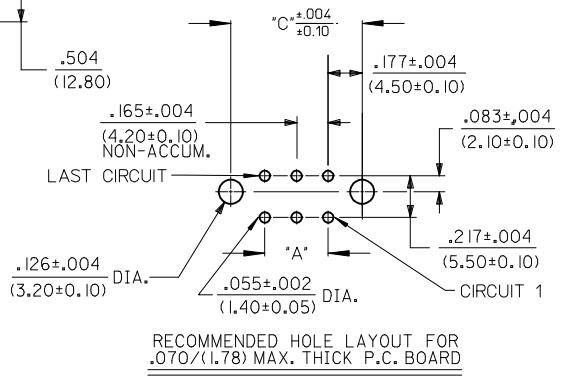
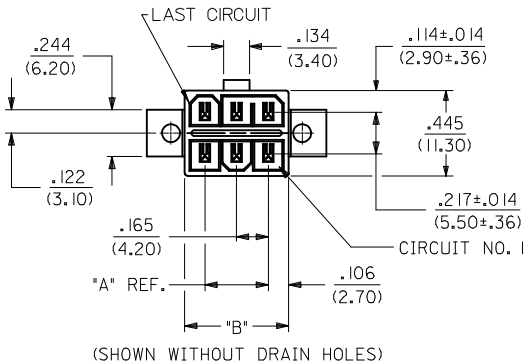
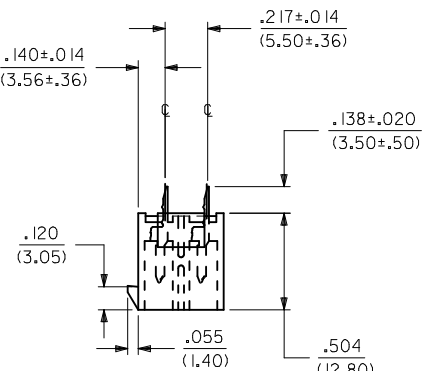
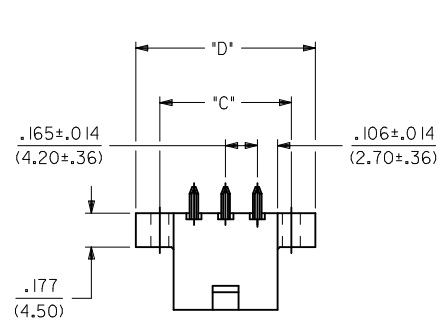


NOTES:

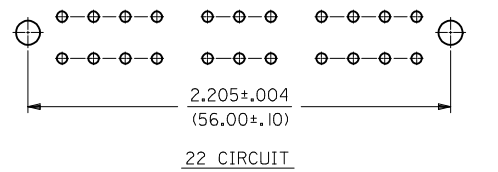
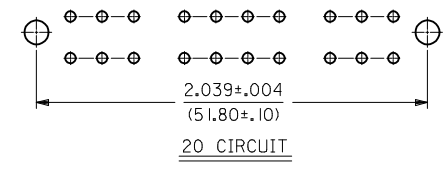
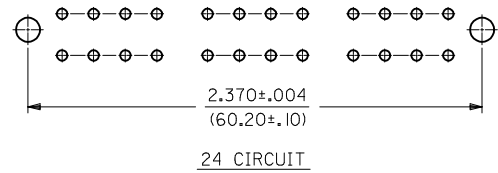
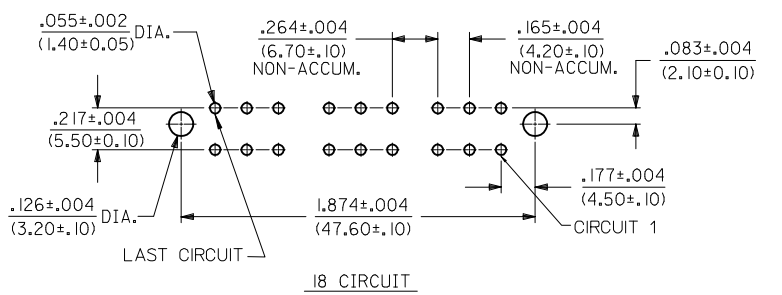
- HOUSING MAT'L.: POLYESTER, UNFILLED, 94V-0. COLOR: BLACK.  
TERMINAL MATERIAL: BRASS ALLOY 260.
- PLATINGS:  
1 = .000035/(.00090) MIN. BRIGHT TIN OVER  
.000020/(.00050) MIN. COPPER.  
\*2 = .000030/(.00076) MIN. SELECT GOLD AND  
.000100/(.00254) MIN. SELECT MATTE TIN OVER  
.000050/(.00127) MIN. NICKEL OVERALL.  
\*THE PRIMARY SHIPPING CARTON WILL BE LABELED  
"COMPLIANT TO RoHS DIRECTIVE 2002/95/EC  
AND ELV ANNEX II OF DIRECTIVE 2000/53/EC."  
CARTONS WITHOUT THIS LABEL MAY CONTAIN  
PRODUCT WITH TIN-LEAD PLATING.
- PRODUCT SPECIFICATION AND PROCESSING PARAMETERS:  
SEE PS-5556-003
- PACKAGING SPECIFICATION: BULK PACKED
- PART IS DESIGNED FOR USE WITH 4-40 OR M3 SCREWS.
- PART MATES WITH RECEPTACLE 30067-\*
- THIS PART CONFORMS TO CLASS 'B' REQUIREMENTS OF COSMETIC SPECIFICATION PS-45499-002.



PCB LAYOUT FOR 2-16 CIRCUIT PARTS WITH FLANGES

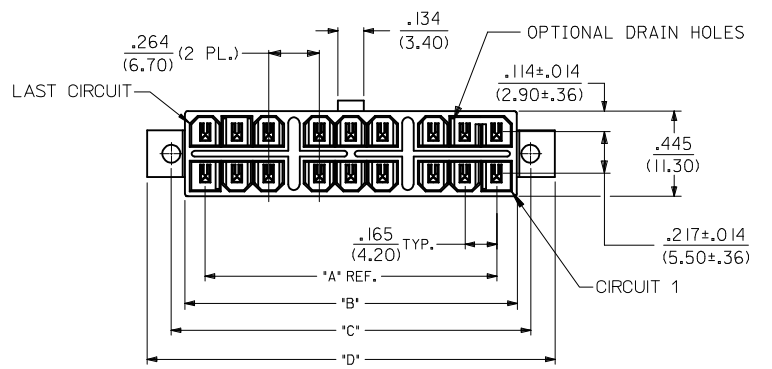
RECOMMENDED INSTALLATION OF HEADER TO P.C.B. BOARD

LAYOUT FOR 18-24 CIRCUIT PARTS WITH FLANGES



FLANGE MOUNT

(SEE SHT. 2 FOR PARTS WITH PEGS)



ADD SEL GOLD P/N'S EC NO: UCP2009-0759 DRAWN: J.KLOSTERMEIER 2008/09/30 CHKD: J.BELL 2008/10/03 APPR: F.SMITH 2008/10/03	QUALITY SYMBOLS ▽=0 ▽=0	GENERAL TOLERANCES (UNLESS SPECIFIED) <table border="1"> <tr> <th></th> <th>mm</th> <th>INCH</th> </tr> <tr> <td>4 PLACES ±</td> <td>---</td> <td>---</td> </tr> <tr> <td>3 PLACES ±</td> <td>---</td> <td>±.010</td> </tr> <tr> <td>2 PLACES ±</td> <td>0.25</td> <td>±.014</td> </tr> <tr> <td>1 PLACE ±</td> <td>0.36</td> <td>±---</td> </tr> </table> ANGULAR ±1/2°		mm	INCH	4 PLACES ±	---	---	3 PLACES ±	---	±.010	2 PLACES ±	0.25	±.014	1 PLACE ±	0.36	±---	DIMENSION STYLE IN/MM DRAWN BY: R.J.F. DATE: 9/19/91 CHECKED BY: GEP DATE: 9/19/91 APPROVED BY: RAS DATE: 9/19/91	SCALE: 2:1 DESIGN UNITS: METRIC THIRD ANGLE PROJECTION	TITLE: MINI-FIT T.P.A. VERTICAL HEADER ASSEMBLY
		mm	INCH																	
	4 PLACES ±	---	---																	
	3 PLACES ±	---	±.010																	
2 PLACES ±	0.25	±.014																		
1 PLACE ±	0.36	±---																		
MATERIAL NO. SEE CHARTS	DOCUMENT NO. SDA-30069-****	SHEET NO. 1 OF 4																		
DRAFT WHERE APPLICABLE MUST REMAIN WITHIN DIMENSIONS																				
THIS DRAWING CONTAINS INFORMATION THAT IS PROPRIETARY TO MOLEX INCORPORATED AND SHOULD NOT BE USED WITHOUT WRITTEN PERMISSION																				

TIN-PLATED ASSEMBLIES WITH FLANGES, WITHOUT DRAIN HOLES.							GOLD-PLATED ASSEMBLIES WITH FLANGES, WITHOUT DRAIN HOLES.					
CKT. SIZE	ENG. NO.	EDP. NO.	DIM. "A"	DIM. "B"	DIM. "C"	DIM. "D"	ENG. NO.	EDP. NO.	DIM. "A"	DIM. "B"	DIM. "C"	DIM. "D"
2	A-30069-02A1	I5-97-7022	—	.213 (5.40)	.354 (9.00)	.606 (15.40)	A-30069-02A2	I5-97-7024	—	.213 (5.40)	.354 (9.00)	.606 (15.40)
4	A-30069-04A1	I5-97-7042	.165 (4.20)	.378 (9.60)	.520 (13.20)	.772 (19.60)	A-30069-04A2	I5-97-7044	.165 (4.20)	.378 (9.60)	.520 (13.20)	.772 (19.60)
6	A-30069-06A1	I5-97-7062	.331 (8.40)	.543 (13.80)	.685 (17.40)	.937 (23.80)	A-30069-06A2	I5-97-7064	.331 (8.40)	.543 (13.80)	.685 (17.40)	.937 (23.80)
8	A-30069-08A1	I5-97-7082	.496 (12.60)	.709 (18.00)	.850 (21.60)	1.102 (28.00)	A-30069-08A2	I5-97-7084	.496 (12.60)	.709 (18.00)	.850 (21.60)	1.102 (28.00)
10	A-30069-10A1	I5-97-7102	.661 (16.80)	.874 (22.20)	1.016 (25.80)	1.268 (32.20)	A-30069-10A2	I5-97-7104	.661 (16.80)	.874 (22.20)	1.016 (25.80)	1.268 (32.20)
12	A-30069-12A1	I5-97-7122	.827 (21.00)	1.039 (26.40)	1.181 (30.00)	1.433 (36.40)	A-30069-12A2	I5-97-7124	.827 (21.00)	1.039 (26.40)	1.181 (30.00)	1.433 (36.40)
14	A-30069-14A1	NOT TOOLED	.992 (25.20)	1.205 (30.60)	1.346 (34.20)	1.598 (40.60)	A-30069-14A2	NOT TOOLED	.992 (25.20)	1.205 (30.60)	1.346 (34.20)	1.598 (40.60)
16	A-30069-16A1	I5-97-7162	1.157 (29.40)	1.370 (34.80)	1.512 (38.40)	1.764 (44.80)	A-30069-16A2	I5-97-7164	1.157 (29.40)	1.370 (34.80)	1.512 (38.40)	1.764 (44.80)
18	A-30069-18A1	NOT TOOLED	1.520 (38.60)	1.732 (44.00)	1.874 (47.60)	2.126 (54.00)	A-30069-18A2	NOT TOOLED	1.520 (38.60)	1.732 (44.00)	1.874 (47.60)	2.126 (54.00)
20	A-30069-20A1	NOT TOOLED	1.685 (42.80)	1.898 (48.20)	2.039 (51.80)	2.291 (58.20)	A-30069-20A2	NOT TOOLED	1.685 (42.80)	1.898 (48.20)	2.039 (51.80)	2.291 (58.20)
22	A-30069-22A1	NOT TOOLED	1.850 (47.00)	2.063 (52.40)	2.205 (56.00)	2.457 (62.40)	A-30069-22A2	NOT TOOLED	1.850 (47.00)	2.063 (52.40)	2.205 (56.00)	2.457 (62.40)
24	A-30069-24A1	NOT TOOLED	2.016 (51.20)	2.228 (56.60)	2.370 (60.20)	2.622 (66.60)	A-30069-24A2	NOT TOOLED	2.016 (51.20)	2.228 (56.60)	2.370 (60.20)	2.622 (66.60)

TIN-PLATED ASSEMBLIES WITH FLANGES AND DRAIN HOLES.							GOLD-PLATED ASSEMBLIES WITH FLANGES AND DRAIN HOLES.					
CKT. SIZE	ENG. NO.	EDP. NO.	DIM. "A"	DIM. "B"	DIM. "C"	DIM. "D"	ENG. NO.	EDP. NO.	DIM. "A"	DIM. "B"	DIM. "C"	DIM. "D"
2	A-30069-02B1	NOT TOOLED	—	.213 (5.40)	.354 (9.00)	.606 (15.40)	A-30069-02B2	NOT TOOLED	—	.213 (5.40)	.354 (9.00)	.606 (15.40)
4	A-30069-04B1	I5-97-7046	.165 (4.20)	.378 (9.60)	.520 (13.20)	.772 (19.60)	A-30069-04B2	I5-97-7048	.165 (4.20)	.378 (9.60)	.520 (13.20)	.772 (19.60)
6	A-30069-06B1	I5-97-7066	.331 (8.40)	.543 (13.80)	.685 (17.40)	.937 (23.80)	A-30069-06B2	I5-97-7068	.331 (8.40)	.543 (13.80)	.685 (17.40)	.937 (23.80)
8	A-30069-08B1	I5-97-7086	.496 (12.60)	.709 (18.00)	.850 (21.60)	1.102 (28.00)	A-30069-08B2	I5-97-7088	.496 (12.60)	.709 (18.00)	.850 (21.60)	1.102 (28.00)
10	A-30069-10B1	I5-97-7106	.661 (16.80)	.874 (22.20)	1.016 (25.80)	1.268 (32.20)	A-30069-10B2	I5-97-7108	.661 (16.80)	.874 (22.20)	1.016 (25.80)	1.268 (32.20)
12	A-30069-12B1	I5-97-7126	.827 (21.00)	1.039 (26.40)	1.181 (30.00)	1.433 (36.40)	A-30069-12B2	I5-97-7128	.827 (21.00)	1.039 (26.40)	1.181 (30.00)	1.433 (36.40)
14	A-30069-14B1	NOT TOOLED	.992 (25.20)	1.205 (30.60)	1.346 (34.20)	1.598 (40.60)	A-30069-14B2	NOT TOOLED	.992 (25.20)	1.205 (30.60)	1.346 (34.20)	1.598 (40.60)
16	A-30069-16B1	I5-97-7166	1.157 (29.40)	1.370 (34.80)	1.512 (38.40)	1.764 (44.80)	A-30069-16B2	I5-97-7168	1.157 (29.40)	1.370 (34.80)	1.512 (38.40)	1.764 (44.80)
18	A-30069-18B1	NOT TOOLED	1.520 (38.60)	1.732 (44.00)	1.874 (47.60)	2.126 (54.00)	A-30069-18B2	NOT TOOLED	1.520 (38.60)	1.732 (44.00)	1.874 (47.60)	2.126 (54.00)
20	A-30069-20B1	NOT TOOLED	1.685 (42.80)	1.898 (48.20)	2.039 (51.80)	2.291 (58.20)	A-30069-20B2	NOT TOOLED	1.685 (42.80)	1.898 (48.20)	2.039 (51.80)	2.291 (58.20)
22	A-30069-22B1	NOT TOOLED	1.850 (47.00)	2.063 (52.40)	2.205 (56.00)	2.457 (62.40)	A-30069-22B2	NOT TOOLED	1.850 (47.00)	2.063 (52.40)	2.205 (56.00)	2.457 (62.40)
24	A-30069-24B1	NOT TOOLED	2.016 (51.20)	2.228 (56.60)	2.370 (60.20)	2.622 (66.60)	A-30069-24B2	NOT TOOLED	2.016 (51.20)	2.228 (56.60)	2.370 (60.20)	2.622 (66.60)

**LEGEND:**  
 A - 30069 - \* \* \* \* \*  
 CIRCUIT SIZE \_\_\_\_\_  
 (02-24)  
 HOUSING STYLE \_\_\_\_\_  
 A = FLANGES  
 B = FLANGES, DRAIN HOLES  
 C = PEGS  
 D = PEGS, DRAIN HOLES  
 PLATING \_\_\_\_\_  
 1 = TIN OVER COPPER.  
 2 = 30° GOLD OVER NICKEL.

CORRECT LEGEND EC NO: UCP2008-3043 DRAWN: GAVRIEL L 2008/06/23 CHKD: NIKKIPPER 2008/07/14 APPR: FSM/TH 2008/07/14	DESCRIPTION ▽=0 ▽=0	QUALITY SYMBOLS	GENERAL TOLERANCES (UNLESS SPECIFIED)	DIMENSION STYLE IN/MM	SCALE 1:1	DESIGN UNITS METRIC	THIRD ANGLE PROJECTION	
		4 PLACES ±--- ±--- ±---	± mm ± INCH	DRAWN BY R/JF	DATE 9/19/91	TITLE MINI-FIT T.P.A. VERTICAL HEADER ASSEMBLY		
		3 PLACES ±--- ±--- ±---	±--- ±--- ±---	CHECKED BY GEP	DATE 9/19/91	MATERIAL NO. SDA-30069-****		
		2 PLACES ±--- ±--- ±---	±--- ±--- ±---	APPROVED BY RAS	DATE 9/19/91	SHEET NO. 3 OF 4		
1 PLACE ±--- ±--- ±---	±--- ±--- ±---	ANGULAR ±1/2°	DRAFT WHERE APPLICABLE MUST REMAIN WITHIN DIMENSIONS	SEE CHARTS	THIS DRAWING CONTAINS INFORMATION THAT IS PROPRIETARY TO MOLEX INCORPORATED AND SHOULD NOT BE USED WITHOUT WRITTEN PERMISSION			