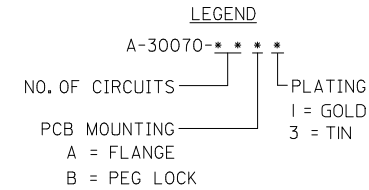
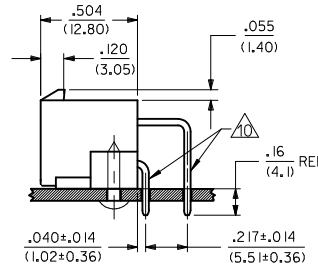
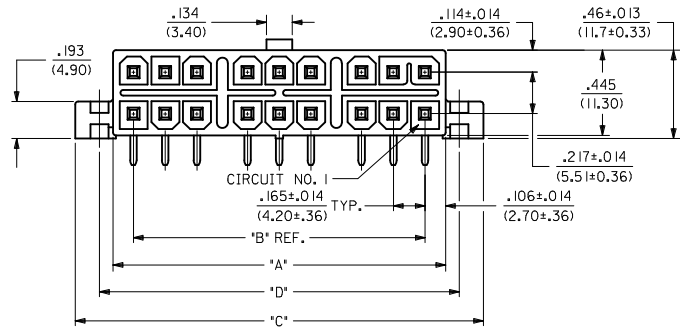


OPTION A FLANGE MOUNT

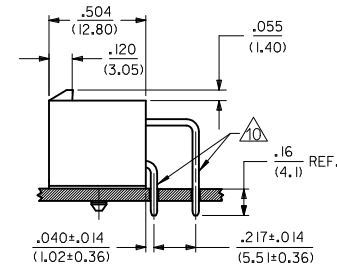
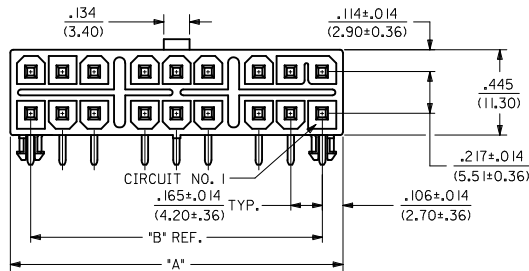
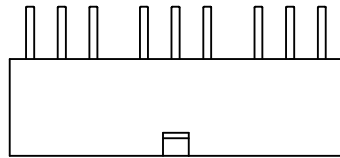
SEE SHT. 2 FOR ADDITIONAL INFORMATION

- NOTES:
- MATERIALS:
HOUSING: POLYESTER, UNFILLED, UL94 V-0, COLOR: BLACK
PINS: BRASS
 - PLATING:
1=.000030/(0.00076) MIN. SELECT GOLD AND .000100/(0.00254) MIN. SELECT MATTE TIN OVER .000050/(0.00127) MIN. NICKEL OVERALL
3=.000100/(0.00254) MIN. MATTE TIN OVER .000050/(0.00127) MIN. NICKEL
 - PRODUCT SPECIFICATION: PS-5556-003
 - PACKAGING: BULK PACKAGING
 - MATES WITH TPA RECEPTACLE NO. 30067-*
 - PARTS ARE NOT DESIGNED TO BE MATED OR UNMATED WHILE CIRCUITS ARE LIVE.
 - PART IS NOT DESIGNED FOR CURRENT SHARING.
 - PART CONFORMS TO CLASS "B" REQUIREMENTS OF COSMETIC SPECIFICATION PS-45499-002.
 - DISCOLORATION IN THE BANDOLIER CARRIER AREA OF THE PIN IS INHERENT TO THE PLATING PROCESS AND IS DUE TO THE MASKING EFFECT OF THE CARRIER. THIS DISCOLORATION IS IN A NON-FUNCTIONAL AREA OF THE PIN AND WILL NOT AFFECT THE PERFORMANCE OF THE HEADER ASSEMBLY.
- FORMING MARKS ARE ACCEPTABLE



OPTION B PEG MOUNT

SEE SHT. 3 FOR ADDITIONAL INFORMATION



CHANGE PLATING	EC NO: UCP2012-1560	2012/01/18
	DRW: NGUYEN	2012/01/18
	CHKD: JHELL	2012/02/02
	APPR: FSMITH	
REV	DESCRIPTION	
N		

QUALITY SYMBOLS			
-----------------	--	--	--

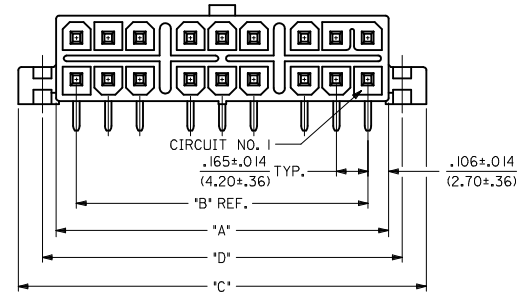
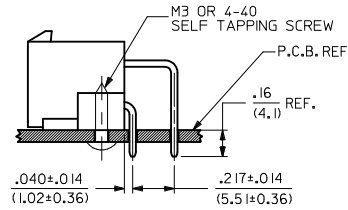
GENERAL TOLERANCES (UNLESS SPECIFIED)	mm	INCH
	4 PLACES ± .01	± .001
	3 PLACES ± .02	± .002
	2 PLACES ± 0.25	± .010
	1 PLACE ± 0.36	± .014
	ANGULAR ± 1/2°	
DRAFT WHERE APPLICABLE MUST REMAIN WITHIN DIMENSIONS		

DIMENSION STYLE		SCALE	DESIGN UNITS	THIRD ANGLE PROJECTION
IN/MM		2:1	METRIC	
DRAWN BY	DATE	TITLE		
DMF	1990/6/15	MINI-FIT T.P.A. RIGHT ANGLE HEADER ASSEMBLY		
CHECKED BY	DATE	MATERIAL NO.		
JRT	1990/6/15	SEE CHART		
APPROVED BY	DATE	DOCUMENT NO.		
FSMITH	2011/09/12	SDA-30070-****		
SHEET NO.		1 OF 4		

MOLEX INCORPORATED		SHEET NO.	
		1 OF 4	
THIS DRAWING CONTAINS INFORMATION THAT IS PROPRIETARY TO MOLEX INCORPORATED AND SHOULD NOT BE USED WITHOUT WRITTEN PERMISSION			

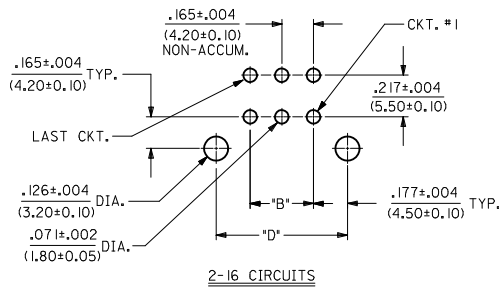
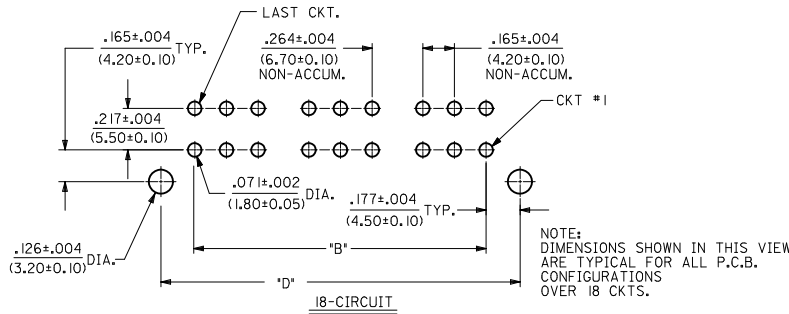
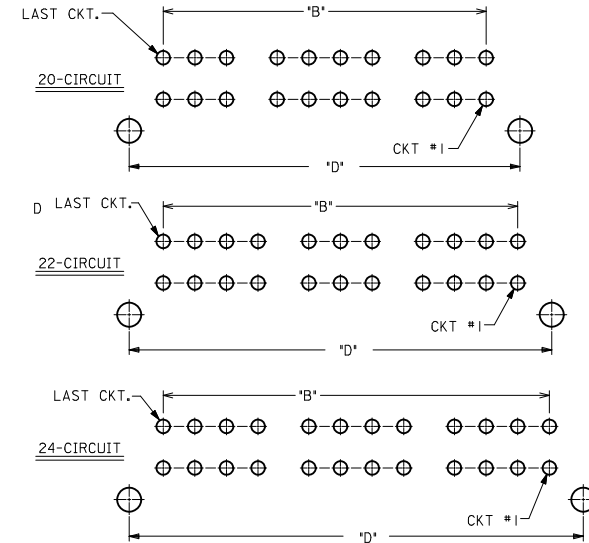
FLANGE MOUNT OPTION

CKT. SIZE	ENG. NO.	DIM. 'A'	DIM. 'B'	DIM. 'C'	DIM. 'D'
2	30070-02A*	.213 (5.40)	—	.606 (15.40)	.354 (9.00)
4	30070-04A*	.378 (9.60)	.165 (4.20)	.772 (19.60)	.520 (13.20)
6	30070-06A*	.543 (13.80)	.331 (8.40)	.937 (23.80)	.685 (17.40)
8	30070-08A*	.709 (18.00)	.496 (12.60)	1.102 (28.00)	.850 (21.60)
10	30070-10A*	.874 (22.20)	.661 (16.80)	1.268 (32.20)	1.016 (25.80)
12	30070-12A*	1.039 (26.40)	.827 (21.00)	1.433 (36.40)	1.181 (30.00)
14	30070-14A*	1.205 (30.60)	.992 (25.20)	1.598 (40.60)	1.346 (34.20)
16	30070-16A*	1.370 (34.80)	1.157 (29.40)	1.764 (44.80)	1.512 (38.40)
18	30070-18A*	1.732 (44.00)	1.520 (38.60)	2.126 (54.00)	1.874 (47.60)
20	30070-20A*	1.898 (48.20)	1.685 (42.80)	2.291 (58.20)	2.039 (51.80)
22	30070-22A*	2.063 (52.40)	1.850 (47.00)	2.457 (62.40)	2.205 (56.00)
24	30070-24A*	2.228 (56.60)	2.016 (51.20)	2.622 (66.60)	2.370 (60.20)



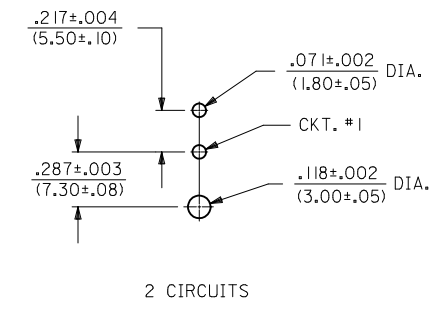
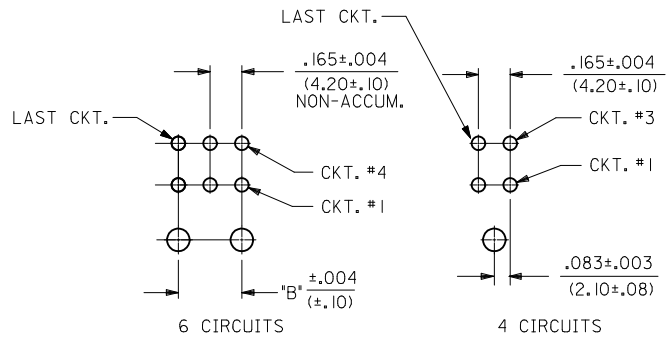
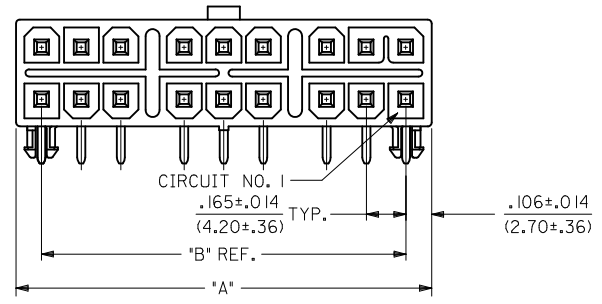
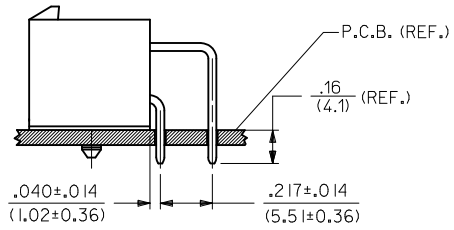
OPTION "A"
FLANGE MOUNT

RECOMMENDED P.C.BOARD LAYOUT FOR .070/(1.78) MAX. THICK P.C. BOAR VIEWED FROM COMPONENT SIDE OF BOARD



SEE SHEET 1 EC NO: UCP2012-1560 DRAWING: NGUYEN 2012/01/18 CHKD: J.BELL 2012/01/18 APPR: F.SMITH 2012/02/02	QUALITY SYMBOLS ▽=0 ▽=0 ▽=0	GENERAL TOLERANCES (UNLESS SPECIFIED)		DIMENSION STYLE IN/MM		SCALE 2:1	DESIGN UNITS METRIC	THIRD ANGLE PROJECTION		
		4 PLACES ± --- ± ---	3 PLACES ± --- ± .01	2 PLACES ± 0.25 ± .014	1 PLACE ± 0.36 ± ---	DRAWN BY DMF	DATE 1990/6/15	CHECKED BY JRT	DATE 1990/6/15	APPROVED BY FSMITH
DRAFT WHERE APPLICABLE MUST REMAIN WITHIN DIMENSIONS		ANGULAR ±1/2°		SEE CHART		Molex MOLEX INCORPORATED		DOCUMENT NO. SDA-30070-****		SHEET NO. 2 OF 4
THIS DRAWING CONTAINS INFORMATION THAT IS PROPRIETARY TO MOLEX INCORPORATED AND SHOULD NOT BE USED WITHOUT WRITTEN PERMISSION										

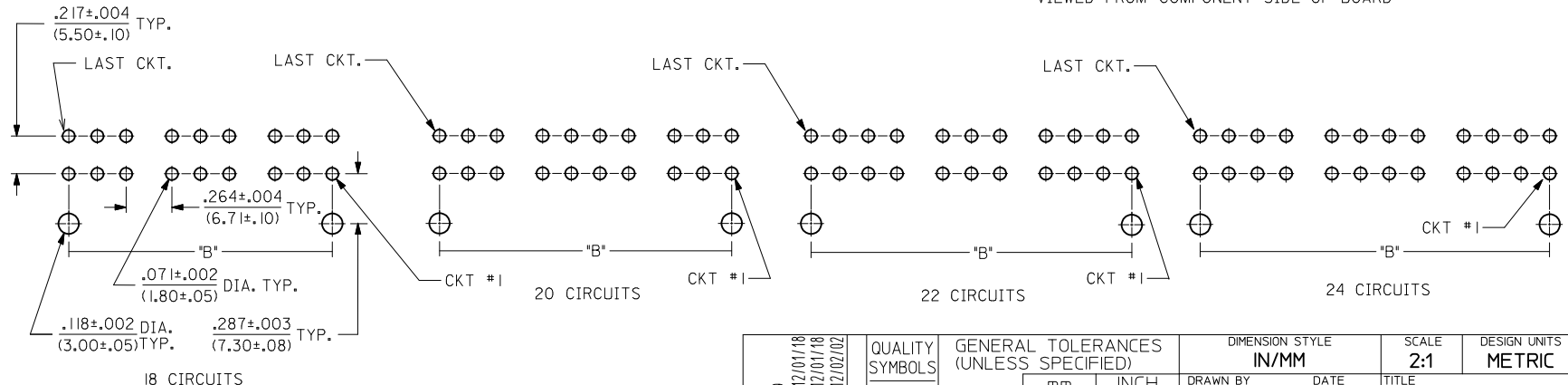
PEG MOUNT OPTION			
CKT. SIZE	ENG. NO.	DIM. 'A'	DIM. 'B'
2	A30070-02B*	.213 (5.40)	—
4	A30070-04B*	.378 (9.60)	.165 (4.20)
6	A30070-06B*	.543 (13.80)	.331 (8.40)
8	A30070-08B*	.709 (18.00)	.496 (12.60)
10	A30070-10B*	.874 (22.20)	.661 (16.80)
12	A30070-12B*	1.039 (26.40)	.827 (21.00)
14	A30070-14B*	1.205 (30.60)	.992 (25.20)
16	A30070-16B*	1.370 (34.80)	1.157 (29.40)
18	A30070-18B*	1.732 (44.00)	1.520 (38.60)
20	A30070-20B*	1.898 (48.20)	1.685 (42.80)
22	A30070-22B*	2.063 (52.40)	1.850 (47.00)
24	A30070-24B*	2.228 (56.60)	2.016 (51.20)



NOTE:
DIMENSIONS SHOWN IN THIS
VIEW ARE TYPICAL FOR ALL
P.C.B. CONFIGURATIONS FROM
6-16 CIRCUITS.

OPTION "B" PEG MOUNT

RECOMMENDED HOLE LAYOUT FOR .070/(1.78) MAX. P.C.BOARD
VIEWED FROM COMPONENT SIDE OF BOARD



NOTE:
DIMENSIONS SHOWN IN THIS VIEW ARE
TYPICAL FOR ALL P.C.B. CONFIGURATIONS
OVER 18 CKTS.

SEE SHEET 1 EC NO: UCP2012-1560 DRAWN: NGUYEN 2012/01/18 CHKD: BELM 2012/01/18 APPR: FSMITH 2012/02/02	QUALITY SYMBOLS ▽=0 ▽=0 ▽=0	GENERAL TOLERANCES (UNLESS SPECIFIED)		DIMENSION STYLE IN/MM		SCALE 2:1	DESIGN UNITS METRIC	THIRD ANGLE PROJECTION	
		4 PLACES ± .01	3 PLACES ± .01	2 PLACES ± .025	1 PLACE ± 0.36	DRAWN BY DMF	DATE 1990/6/15	MINI-FIT T.P.A. RIGHT ANGLE HEADER ASSEMBLY	
DRAFT WHERE APPLICABLE MUST REMAIN WITHIN DIMENSIONS		ANGULAR ±1/2°		APPROVED BY FSMITH		DATE 2011/09/12	MOLEX INCORPORATED		
		SEE CHART		MATERIAL NO.		DOCUMENT NO.		SHEET NO.	
				SDA-30070-****		3 OF 4			
THIS DRAWING CONTAINS INFORMATION THAT IS PROPRIETARY TO MOLEX INCORPORATED AND SHOULD NOT BE USED WITHOUT WRITTEN PERMISSION									

13		12		11		10		9		8		7		6		5		4		3		2		1						
PART NUMBER	ENG. NUMBER	CKT. SIZE	MTG. OPT.	PLATING	HSG. MAT'L.	PART NUMBER	ENG. NUMBER	CKT. SIZE	MTG. OPT.	PLATING	HSG. MAT'L.	PART NUMBER	ENG. NUMBER	CKT. SIZE	MTG. OPT.	PLATING	HSG. MAT'L.	PART NUMBER	ENG. NUMBER	CKT. SIZE	MTG. OPT.	PLATING	HSG. MAT'L.	PART NUMBER	ENG. NUMBER	CKT. SIZE	MTG. OPT.	PLATING	HSG. MAT'L.	
15-97-8022	A-30070-02A3	2	FLNG	TIN	94V-0	NO E.D.P.		2				15-97-8023	A-30070-02B3	2	PEGS	TIN	94V-0			2										
15-97-8042	A-30070-04A3	4	↑	↑	↑	↑		4	↑	↑	↑	15-97-8043	A-30070-04B3	4	↑	↑	↑			4	↑	↑	↑			4	↑	↑	↑	
15-97-8062	A-30070-06A3	6						6				REL TO MFG	A-30070-06B3	6						6						6				
15-97-8082	A-30070-08A3	8						8				↑	A-30070-08B3	8						8						8				
15-97-8102	A-30070-10A3	10						10				↓	A-30070-10B3	10						10						10				
15-97-8122	A-30070-12A3	12						12				↓	A-30070-12B3	12						12						12				
REL TO MFG	A-30070-14A3	14						14				↓	A-30070-14B3	14						14						14				
15-97-8162	A-30070-16A3	16						16				REL TO MFG	A-30070-16B3	16						16						16				
NO E.D.P.	A-30070-18A3	18						18				NO E.D.P.	A-30070-18B3	18						18						18				
NO E.D.P.	A-30070-20A3	20						20				NO E.D.P.	A-30070-20B3	20						20						20				
NO E.D.P.	A-30070-22A3	22	↓	↓	↓	↓		22	↓	↓	↓	NO E.D.P.	A-30070-22B3	22	↓	↓	↓	↓		22	↓	↓	↓	↓		22	↓	↓	↓	↓
NO E.D.P.	A-30070-24A3	24	FLNG	TIN	94V-0	NO E.D.P.		24				NO E.D.P.	A-30070-24B3	24	PEGS	TIN	94V-0			24						24				
PART NUMBER	ENG. NUMBER	CKT. SIZE	MTG. OPT.	PLATING	HSG. MAT'L.	PART NUMBER	ENG. NUMBER	CKT. SIZE	MTG. OPT.	PLATING	HSG. MAT'L.	PART NUMBER	ENG. NUMBER	CKT. SIZE	MTG. OPT.	PLATING	HSG. MAT'L.	PART NUMBER	ENG. NUMBER	CKT. SIZE	MTG. OPT.	PLATING	HSG. MAT'L.	PART NUMBER	ENG. NUMBER	CKT. SIZE	MTG. OPT.	PLATING	HSG. MAT'L.	
15-97-8027	A-30070-02A1	2	FLNG	GOLD	94V-0			2				15-97-8028	A-30070-02B1	2	PEGS	GOLD	94V-0			2						2				
15-97-8047	A-30070-04A1	4	↑	↑	↑			4	↑	↑	↑	15-97-8048	A-30070-04B1	4	↑	↑	↑			4	↑	↑	↑			4	↑	↑	↑	↑
15-97-8067	A-30070-06A1	6						6				REL TO MFG	A-30070-06B1	6						6						6				
15-97-8087	A-30070-08A1	8						8				↑	A-30070-08B1	8						8						8				
15-97-8107	A-30070-10A1	10						10				↓	A-30070-10B1	10						10						10				
15-97-8127	A-30070-12A1	12						12				↓	A-30070-12B1	12						12						12				
REL TO MFG	A-30070-14A1	14						14				↓	A-30070-14B1	14						14						14				
15-97-8167	A-30070-16A1	16						16				REL TO MFG	A-30070-16B1	16						16						16				
NO E.D.P.	A-30070-18A1	18						18				NO E.D.P.	A-30070-18B1	18						18						18				
NO E.D.P.	A-30070-20A1	20						20				NO E.D.P.	A-30070-20B1	20						20						20				
NO E.D.P.	A-30070-22A1	22	↓	↓	↓	↓		22	↓	↓	↓	NO E.D.P.	A-30070-22B1	22	↓	↓	↓	↓		22	↓	↓	↓	↓		22	↓	↓	↓	↓
NO E.D.P.	A-30070-24A1	24	FLNG	GOLD	94V-0			24				NO E.D.P.	A-30070-24B1	24	PEGS	GOLD	94V-0			24						24				

SEE SHEET 1 EC NO: UCP2012-1560 DRAWING NO: 2012/01/18 CHKD: J.BELL 2012/01/18 APPR: FSMITH 2012/02/02 REV: N	QUALITY SYMBOLS 	GENERAL TOLERANCES (UNLESS SPECIFIED) <table border="1"> <tr> <th></th> <th>mm</th> <th>INCH</th> </tr> <tr> <td>4 PLACES</td> <td>± .005</td> <td>± .0004</td> </tr> <tr> <td>3 PLACES</td> <td>± .005</td> <td>± .01</td> </tr> <tr> <td>2 PLACES</td> <td>± 0.25</td> <td>± .014</td> </tr> <tr> <td>1 PLACE</td> <td>± 0.36</td> <td>± .014</td> </tr> </table>		mm	INCH	4 PLACES	± .005	± .0004	3 PLACES	± .005	± .01	2 PLACES	± 0.25	± .014	1 PLACE	± 0.36	± .014	DIMENSION STYLE IN/MM DRAWN BY: DMF DATE: 1990/6/15 CHECKED BY: JRT DATE: 1990/6/15 APPROVED BY: FSMITH DATE: 2011/09/12	SCALE: 1:1 DESIGN UNITS: METRIC THIRD ANGLE PROJECTION	TITLE: MINI-FIT T.P.A. RIGHT ANGLE HEADER ASSEMBLY	MOLEX INCORPORATED	MATERIAL NO.: SEE CHART DOCUMENT NO.: SDA-30070-**** SHEET NO.: 4 OF 4
		mm	INCH																			
	4 PLACES	± .005	± .0004																			
	3 PLACES	± .005	± .01																			
2 PLACES	± 0.25	± .014																				
1 PLACE	± 0.36	± .014																				
DRAFT WHERE APPLICABLE MUST REMAIN WITHIN DIMENSIONS		THIS DRAWING CONTAINS INFORMATION THAT IS PROPRIETARY TO MOLEX INCORPORATED AND SHOULD NOT BE USED WITHOUT WRITTEN PERMISSION																				