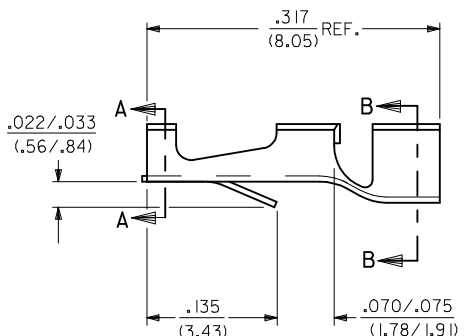
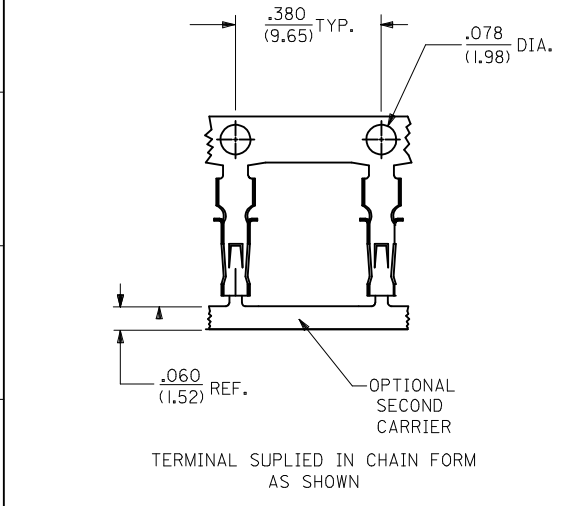


- NOTES:**
1. MATERIAL: BRASS, .006/(.15) TH'K., ALLOY 260
 2. MATERIAL: PHOS. BRONZE, .006/(.15) TH'K., ALLOY 510
 3. THIS PART TO CONFORM TO MOLEX SOLDERABILITY SPEC. 152.
 4. PRODUCT SPECIFICATION: PS-4706-001
 5. RECOMMENDED .051±.002 DIA. HOLE FOR .062 TH'K. PCB.
 6. TOOLING MUST BE ORDERED BY AWG. WIRE SIZE.
 7. 4811-***A(***)** TERMINAL WILL ACCOMMODATE #22 TO 26 AWG. WIRE WITH .100/(2.54) MAX. DIA. INSULATION.
 8. 4811-**C(**)**** TERMINAL WILL ACCOMMODATE #22 TO 26 AWG. WIRE WITH .060/(1.52) MAX. DIA. INSULATION.
 9. PLATING PER SDES-88, PLATING MUST MEET SPEC. ON OUTER SURFACES.



4811-***A(***)**

MATERIAL:
 A=BRASS, ALLOY 260
 SEE NOTE 1
 B=PHOS. BRONZE
 SEE NOTE 2

CARRIER OPTION:
 A= SINGLE CARRIER
 B= DOUBLE CARRIER

SPICE OPTION
 BLANK= SPLICED REEL PER ES-339
 I= SPLICE FREE REEL

FORM:
 CA= CHAIN PER ES-339-A
 CB= CHAIN PER ES-339-B

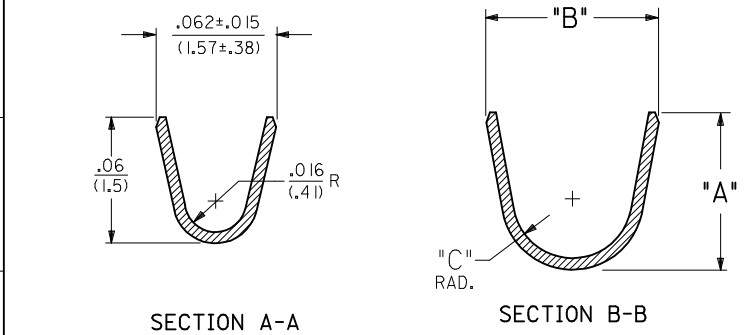
CODE	DIMENSION			WIRE SIZE
	"A"	"B"	"C" RAD.	
A	.140±.005 (3.56±.13)	.170±.010 (4.32±.25)	.062 (1.57)	SEE NOTE 7
C	.082±.005 (2.08±.13)	.092±.010 (2.34±.25)	.031 (.79)	SEE NOTE 8

PLATING CODE:

(FOR ADDITIONAL PLATING, SEE SDES-88)

*909 OVERALL HOT TIN DIP: 2.54 MICROMETERS MIN.

*THE PRIMARY SHIPPING CARTON WILL BE LABELED *COMPLIANT TO RoHS DIRECTIVE 2002/95/EC AND ELV ANNEX II OF DIRECTIVE 2000/53/EC.* CARTONS WITHOUT THIS LABEL MAY CONTAIN PRODUCT WITH TIN-LEAD PLATING.



SEE CHART EC NO: UCP2005-0973 DRW:ADRATNOL 2004/11/19 CHKD:SAMEC 2004/04/08/9 APPR:MMRGGULIUS 2004/11/08/4	QUALITY SYMBOLS ▽=0 ▽=0	GENERAL TOLERANCES (UNLESS SPECIFIED)		DIMENSION STYLE IN/MM	SCALE ---	DESIGN UNITS INCH	THIRD ANGLE PROJECTION
		4 PLACES ± --- ± --- 3 PLACES ± --- ± .010 2 PLACES ± 0.25 ± .014 1 PLACE ± 0.35 ± --- ANGULAR ± 1/2°	mm INCH DRAWN BY DATE GMC 05/02/89 CHECKED BY DATE PATEL 05/02/89 APPROVED BY DATE LENZ 05/02/89	TITLE TERMINAL, STRAIN RELIEF 4811 SERIES DWG		MOLEX INCORPORATED	
REV AU1	DESCRIPTION	DRAFT WHERE APPLICABLE MUST REMAIN WITHIN DIMENSIONS		MATERIAL NO. SEE CHART	DOCUMENT NO. SD-4811-*	THIS DRAWING CONTAINS INFORMATION THAT IS PROPRIETARY TO MOLEX INCORPORATED AND SHOULD NOT BE USED WITHOUT WRITTEN PERMISSION	

13

12

11

10

9

8

7

6

5

4

3

2

1

4811-A-AA(***)*

4811-A-AC(***)*

4811-A-BA(***)*

4811-A-BC(***)*

PART NO.	ENG. NO
16-02-0037	-A-AA(P909)CB

PART NO.	ENG. NO
16-02-0034	-A-AC(P909)CB

PART NO.	ENG. NO
16-02-0041	-A-BA(P909)CB

PART NO.	ENG. NO
16-02-0047	-A-BC(P909)CB

COLUMN NO. 1 CON'T. IN COLUMN NO. SHEET NO.

COLUMN NO. 2 CON'T. IN COLUMN NO. SHEET NO.

COLUMN NO. 3 CON'T. IN COLUMN NO. SHEET NO.

COLUMN NO. 4 CON'T. IN COLUMN NO. SHEET NO.

CHANGE TO ME10
 EC NO: 2004/11/08
 DRWN:ADRATNOL
 CHKD: SAMEC
 APPR: MARGULIS
 2004/11/08

QUALITY SYMBOLS
 =0
 =0

GENERAL TOLERANCES (UNLESS SPECIFIED)

	mm	INCH
4 PLACES	± .005	± .0005
3 PLACES	± .005	± .0005
2 PLACES	± 0.13	± .01
1 PLACE	± 0.25	± .01

ANGULAR ±1/2°

DRAFT WHERE APPLICABLE MUST REMAIN WITHIN DIMENSIONS

DIMENSION STYLE IN/MM

DRAWN BY	DATE
COMSTOCK	04/17/89
CHECKED BY	DATE
PATEL	04/17/89
APPROVED BY	DATE
LENZ	04/17/89

MATERIAL NO. SEE CHART

SCALE --- INCH

DESIGN UNITS INCH

THIRD ANGLE PROJECTION

TITLE TERMINAL, STRAIN RELIEF 4811 SERIES DWG

MOLEX INCORPORATED

DOCUMENT NO. SD-4811-*

SHEET NO. 2

THIS DRAWING CONTAINS INFORMATION THAT IS PROPRIETARY TO MOLEX INCORPORATED AND SHOULD NOT BE USED WITHOUT WRITTEN PERMISSION