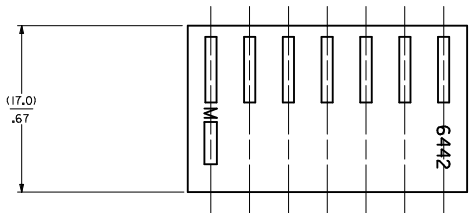


SECTION "C-C"



NO. OF CKT'S.	DIM. A	DIM. B
1	-----	(4.78±.18)
2	(3.96±.13)	.188±.007
3	.156±.005	(8.74±.18)
4	(7.92±.13)	.344±.007
5	.312±.005	(12.70±.18)
6	(11.89±.13)	.500±.007
7	.468±.005	(16.66±.18)
8	(15.85±.13)	.656±.007
9	.624±.005	(20.62±.18)
10	(19.81±.13)	.812±.007
11	.780±.005	(24.59±.18)
12	(23.77±.13)	.968±.007
13	.936±.005	(28.55±.18)
14	(27.74±.25)	1.124±.007
15	1.092±.010	(32.51±.30)
16	(31.70±.25)	1.280±.012
17	1.248±.010	(36.47±.30)
18	(35.66±.25)	1.436±.012
19	1.404±.010	(40.44±.30)
20	(39.62±.25)	1.592±.012
21	.1716±.010	(44.40±.30)
22	(43.59±.25)	1.748±.012
23	1.716±.010	(48.36±.30)
24	(47.55±.30)	1.904±.012
	1.872±.012	(52.32±.36)
	(51.51±.36)	2.060±.014
	2.028±.014	(56.29±.41)
	(55.47±.36)	2.216±.016
	2.184±.014	(60.25±.41)
	(59.44±.36)	2.372±.016
	2.340±.014	(64.21±.41)
	(63.40±.36)	2.528±.016
	2.496±.014	(68.17±.41)
	(67.36±.36)	2.684±.016
	2.652±.014	(72.14±.41)
	(71.32±.36)	2.840±.016
	2.808±.014	(76.10±.41)
	(75.29±.46)	2.996±.016
	2.964±.018	(80.06±.51)
	(79.25±.46)	3.152±.020
	3.120±.018	(84.02±.51)
	(83.21±.46)	3.308±.020
	3.276±.018	(87.99±.51)
	(87.17±.46)	3.464±.020
	3.432±.018	(91.95±.51)
	(91.14±.46)	3.620±.020
	3.588±.018	(95.91±.51)
		3.776±.020

- NOTES:
1. MATERIAL A: NYLON 6/6 UL94V-2, COLOR: NATURAL
 2. FINISH: N/A
 3. THIS PART COMPLIES WITH PRODUCT SPECIFICATION PS-40-02.
 4. PACKAGING SPECIFICATION: PK-6442-001
 5. HOUSING SHOWN ABOVE IS STANDARD HOUSING WITH NO OPTIONS.
 6. THIS HOUSING FOR USE WITH TERMINAL NO., 45570-x, (18-20 GA.) WITH (3.12)/.123 MAX. INSULATION DIA. 6838-x, (18-24 GA.) WITH (2.79)/.110 MAX. INSULATION DIA. 7258-x, (22-26 GA.) WITH (1.65)/.065 MAX. INSULATION DIA.
 7. LAST CIRCUIT I.D. NOT PRESENT ON 2-3 CIRCUIT HOUSINGS AND MAY OR MAY NOT BE PRESENT ON 4 CIRCUIT HOUSINGS AND LARGER.
 8. THIS PART CONFORMS TO CLASS B REQUIREMENTS OF COSMETIC SPECIFICATION PS-45499-002.
 9. SEE SHEET 2 FOR OPTIONS.
 10. TEXT ON PART IS FOR REFERENCE ONLY. TEXT AND TEXT LOCATION MAY VARY DEPENDING ON PART NUMBER AND/OR TOOL.

HOUSING OPTIONS

CODE	HOOKS	SIDE HOOKS	RAMP
BLANK	NONE	NONE	NONE
A	NONE	YES	NONE
R	NONE	NONE	FRICITION
B	NONE	NONE	TYPE B
C	NONE	NONE	TYPE C

6442- * N - * - * - *

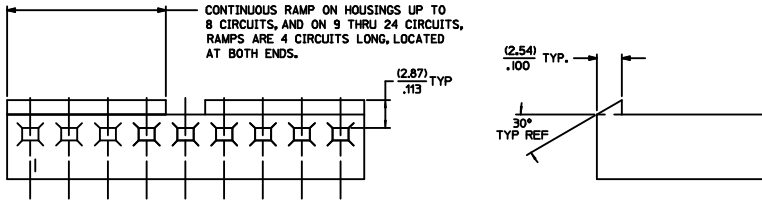
VOLTAGE RATING OPTION
BLANK=NONE
V= '250 VAC' ON HOUSING

MAT'L. OPTION
BLANK= MATERIAL A (SEE NOTE 1)

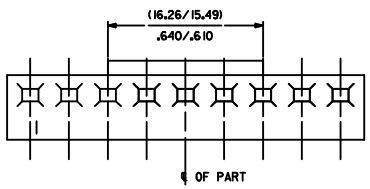
MOLDED VOID CODE
Z=NO VOIDS
A=CKT. 1 VOID,
B=CKT. 2 VOID, ETC.
51=1ST MULTIPLE VOID,
52=2ND MULTIPLE VOID, ETC.

NO. OF CKT'S.

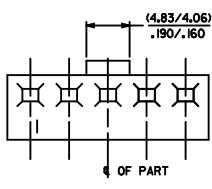
QUALITY SYMBOLS	GENERAL TOLERANCES (UNLESS SPECIFIED)	DIMENSION STYLE	SCALE	DESIGN UNITS	THIRD ANGLE PROJECTION
▽=0	mm INCH	MM/IN	---	INCH	☉
▽=0	4 PLACES ±.010	DRAWN BY POLGAR	DATE 1986/12/03	TITLE KK (3.96)/.156 TRIFURCON CRIMP TERMINAL HOUSING 6442 SERIES	
▽=0	3 PLACES ±.025	CHECKED BY PATEL	DATE 1986/12/03	molex	
▽=0	2 PLACES ±0.36	APPROVED BY LENZ	DATE 1986/12/03	MATERIAL NO. SEE CHART	DOCUMENT NO. SD-6442
▽=0	1 PLACE ±	SHEET NO. 1 OF 4			
▽=0	0 PLACE ±	THIS DRAWING CONTAINS INFORMATION THAT IS PROPRIETARY TO MOLEX INCORPORATED AND SHOULD NOT BE USED WITHOUT WRITTEN PERMISSION			



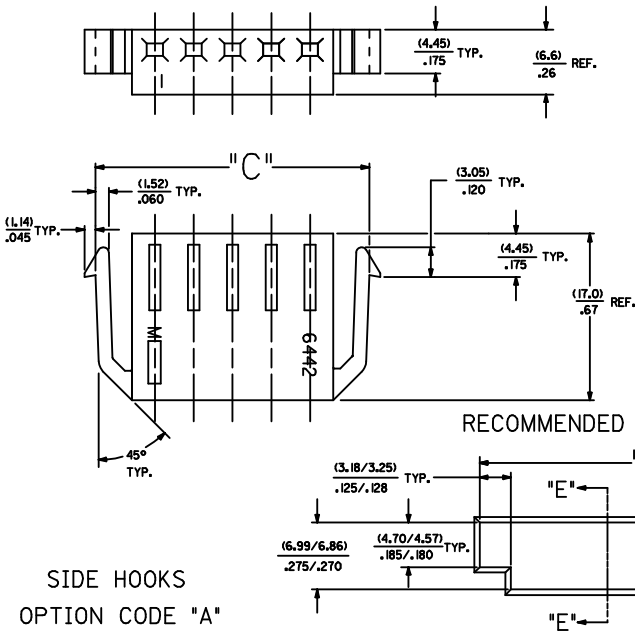
STD. RAMP OPTION CODE "R"



SELECTIVE RAMP OPTION CODE "C"

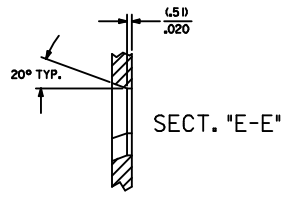


SELECTIVE RAMP OPTION CODE "B"

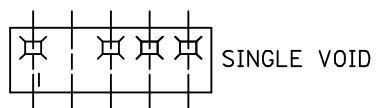


SIDE HOOKS OPTION CODE "A"

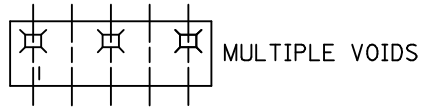
RECOMMENDED (2.03)/.080 THICK PANEL OPENING.



NO. OF CKT'S.	DIM. "C"	DIM. "D"
2	(16.48/15.60) .643/.614	(15.47/15.34) .609/.604
3	(20.45/19.56) .805/.770	(19.43/19.30) .765/.760
5	(28.37/27.48) 1.117/1.082	(27.36/27.23) 1.077/1.072

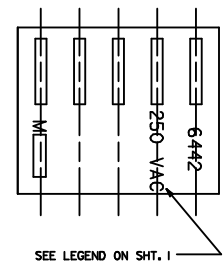


SINGLE VOID



MULTIPLE VOIDS

MOLDED VOIDS
SEE LEGEND ON SHT. 1
SEE CHART FOR VOID CKT. LOCATIONS



OPT. VOLTAGE RATING

NOTE 10 ADDED IEC NO: IUP2018-0013 DRAWINGS CHYK: APPR: SHWARG 2017/07/28 REV DESCRIPTION	QUALITY SYMBOLS	GENERAL TOLERANCES (UNLESS SPECIFIED)	DIMENSION STYLE	SCALE	DESIGN UNITS	THIRD ANGLE PROJECTION	
	▽=0 ▽=0 ▽=0	mm INCH 4 PLACES ± .010 3 PLACES ± .010 2 PLACES ± 0.25 ± .014 1 PLACE ± 0.36 ± .014 0 PLACE ± .010 ± .014	MM/IN	---	INCH	DRAWN BY POLGAR DATE 1986/12/05 CHECKED BY DATE PATEL 1986/12/05 APPROVED BY DATE LENZ 1986/12/05	TITLE KK (3.96)/156 TRIFURCON CRIMP TERMINAL HOUSING 6442 SERIES molex MATERIAL NO. SEE CHART DOCUMENT NO. SD-6442
	ANGULAR ±1/2° DRAFT WHERE APPLICABLE MUST REMAIN WITHIN DIMENSIONS	SIZE D THIS DRAWING CONTAINS INFORMATION THAT IS PROPRIETARY TO MOLEX INCORPORATED AND SHOULD NOT BE USED WITHOUT WRITTEN PERMISSION				SHEET NO. 2 OF 4	

