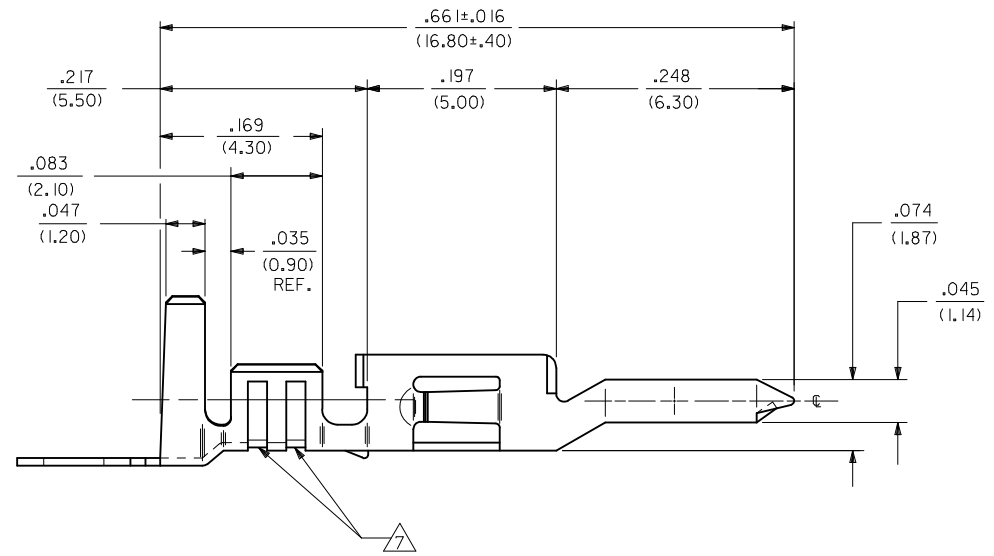
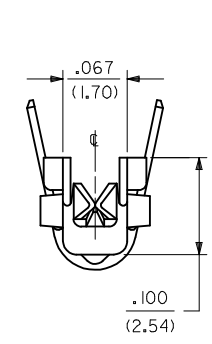
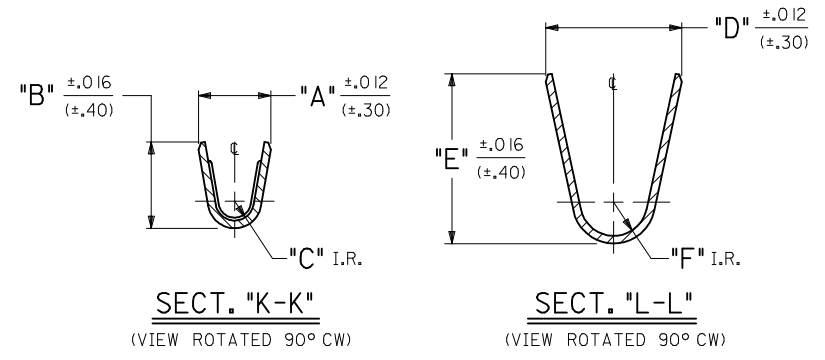


- NOTES:
- MATERIAL:
 - BRASS.
 - PHOS. BRONZE.
 - PLATING:

.000100/(.00254) MIN. TIN OVER .000050/(.00127) MIN. NICKEL (POST-PLATE).
 - PRODUCT SPECIFICATION: PS-5556-001, PS-5556-002, PS-5556-003
 - PACKAGING SPECIFICATION: PK-5558-001 FOR REELS
PK-5556-003 FOR LOOSE
 - MATES WITH TERMINAL: 5556 SERIES
 - TERMINAL IS FOR USE WITH MOLEX PLUG HOUSINGS 5559, 30068, AND 42475.
 - THE NUMBER OF SERRATIONS TO BE ONE FOR WIRE RANGE 22-28.
 - TEXT ON PART IS FOR REFERENCE ONLY. TEXT AND TEXT LOCATION MAY VARY DEPENDING ON PART NUMBER AND/OR TOOL.
 - WHEN TERMINALS ARE INSTALLED IN THE HOUSING THE WIRES ARE TO BE DRESSED IN SUCH A MANNER TO ALLOW THE TERMINALS TO FLOAT FREELY IN THE POCKET.
 - THIS TERMINAL IS DESIGNED FOR SINGLE WIRE CRIMPING.
 - PART CONFORMS TO CLASS "B" REQUIREMENTS OF COSMETIC SPECIFICATION PS-45499-002.



#18-24 TERMINAL SHOWN

| | | | | | | |
|--|-----------------|--|-------------------|--|--|------------------------|
| MODIFY NOTE 8 EC NO: UCP2017-2202 DRWINGSLAFTER 2017/04/05 CHKD:JBELL 2017/04/05 APPR:FSMITH 2017/09/29 | QUALITY SYMBOLS | GENERAL TOLERANCES (UNLESS SPECIFIED) | DIMENSION STYLE | SCALE | DESIGN UNITS | THIRD ANGLE PROJECTION |
| | ▽=0 | mm INCH | IN/MM | INCH | INCH | |
| | ▽=0 | 4 PLACES ± --- ± --- | DRAWN BY DATE | TITLE | MALE CRIMP TERMINAL WITH TIN-OVER-NICKEL PLATING. (MINI-FIT JR. SERIES) molex | |
| | ▽=0 | 3 PLACES ± --- ±.010 | NGUYEN 2014/02/11 | SD-5558-*S* | | |
| REV | DESCRIPTION | 1 PLACE ±.25 ±.015 | CHECKED BY DATE | SHEET NO. 1 OF 2 | | |
| D1 | | 2 PLACES ±.38 ± --- | GEP 1992/05/12 | THIS DRAWING CONTAINS INFORMATION THAT IS PROPRIETARY TO MOLEX. INCORPORATED AND SHOULD NOT BE USED WITHOUT WRITTEN PERMISSION | | |
| | | 0 PLACE ± --- ± --- | APPROVED BY DATE | | | |
| | | ANGULAR ±1/2° | FSMITH 2014/03/21 | | | |
| | | DRAFT WHERE APPLICABLE MUST REMAIN WITHIN DIMENSIONS | MATERIAL NO. | | | |
| | | | SEE SHEET 2 | | | |

| PART NO. | ENG. NO. | FORM | MAT'L. | WIRE GAGE | RANGE OF INSULATION DIA. | QUANTITY PER REEL (FORMED) | DIM. "A" | DIM. "B" | DIM. "C" | DIM. "D" | DIM. "E" | DIM. "F" | |
|------------|------------|-------|----------------------|----------------------|--------------------------|----------------------------|----------------|----------------|----------------|----------------|----------------|----------------|---------------|
| 39-00-0120 | 5558-S | CHAIN | A BRASS | 18-24 GA. | .051-.122 (1.30-3.10) | 4,000 | .075 (1.90) | .091 (2.30) | .020 (.50) | .142 (3.60) | .177 (4.50) | .035 (.90) | |
| 39-00-0121 | 5558-SL | LOOSE | | B PHOS. BRONZE | 22-28 GA. | .035-.071 (.90-1.80) | 6,000 | .071 (1.80) | .065 (1.65) | .016 (.40) | .091 (2.30) | .091 (2.30) | .024 (.60) |
| 39-00-0122 | 5558-S2 | CHAIN | | | 16 GA. | .122 (3.10) MAX. | 4,000 | .091 (2.30) | .106 (2.70) | .024 (.60) | .142 (3.60) | .177 (4.50) | .035 (.90) |
| 39-00-0123 | 5558-S2L | LOOSE | | | 18-24 GA. | .051-.122 (1.30-3.10) | 4,000 | .075 (1.90) | .091 (2.30) | .020 (.50) | .142 (3.60) | .177 (4.50) | .035 (.90) |
| 39-00-0124 | 5558-S3 | CHAIN | 22-28 GA. | | .035-.071 (.90-1.80) | 6,000 | .071 (1.80) | .065 (1.65) | .016 (.40) | .091 (2.30) | .091 (2.30) | .024 (.60) | |
| 39-00-0125 | 5558-S3L | LOOSE | B PHOS. BRONZE | 16 GA. | .122 (3.10) MAX. | 4,000 | .091 (2.30) | .106 (2.70) | .024 (.60) | .142 (3.60) | .177 (4.50) | .035 (.90) | |
| 39-00-0126 | 5558-PBS | CHAIN | | 18-24 GA. | .051-.122 (1.30-3.10) | 4,000 | .075 (1.90) | .091 (2.30) | .020 (.50) | .142 (3.60) | .177 (4.50) | .035 (.90) | |
| 39-00-0127 | 5558-PBSL | LOOSE | | B PHOS. BRONZE | 22-28 GA. | .035-.071 (.90-1.80) | 6,000 | .071 (1.80) | .065 (1.65) | .016 (.40) | .091 (2.30) | .091 (2.30) | .024 (.60) |
| 39-00-0128 | 5558-PBS2 | CHAIN | | | 16 GA. | .122 (3.10) MAX. | 4,000 | .091 (2.30) | .106 (2.70) | .024 (.60) | .142 (3.60) | .177 (4.50) | .035 (.90) |
| 39-00-0129 | 5558-PBS2L | LOOSE | | | 18-24 GA. | .051-.122 (1.30-3.10) | 4,000 | .075 (1.90) | .091 (2.30) | .020 (.50) | .142 (3.60) | .177 (4.50) | .035 (.90) |
| 39-00-0130 | 5558-PBS3 | CHAIN | 22-28 GA. | | .035-.071 (.90-1.80) | 6,000 | .071 (1.80) | .065 (1.65) | .016 (.40) | .091 (2.30) | .091 (2.30) | .024 (.60) | |
| 39-00-0131 | 5558-PBS3L | LOOSE | 16 GA. | | .122 (3.10) MAX. | 4,000 | .091 (2.30) | .106 (2.70) | .024 (.60) | .142 (3.60) | .177 (4.50) | .035 (.90) | |

LEGEND:

5558-***S**

BASE NO. _____
MATERIAL _____
 BLANK= BRASS
 PB= PHOS. BRONZE
 S= TIN OVER NICKEL
CRIMP SIZE _____
 BLANK = 18-24 AWG
 2 = 22-28 AWG
 3 = 16 AWG
CHAIN OR LOOSE _____
 BLANK= CHAIN
 L= LOOSE

| | | | | | | | | | |
|---|--------------------------------------|---------------------------------------|--|--------------------------|------|---|----------------------|------------------------|--|
| SEE SHEET 1 EC NO: UCP2017-2202 DRAWNCSLAFTER 2017/04/05 CHKD:JBELL 2017/04/05 APPR:FSMITH 2017/09/29 | QUALITY SYMBOLS ▽=0 ▽=0 ▽=0 | GENERAL TOLERANCES (UNLESS SPECIFIED) | | DIMENSION STYLE IN/MM | | SCALE 1:1 | DESIGN UNITS INCH | THIRD ANGLE PROJECTION | |
| | | | | mm | INCH | DRAWN BY NNGUYEN | | DATE 2014/02/11 | |
| | | 4 PLACES ± --- | | ± --- | | CHECKED BY GEP | | DATE 1992/05/12 | |
| | | 3 PLACES ± --- | | ± .010 | | APPROVED BY FSMITH | | DATE 2014/03/21 | |
| 2 PLACES ± .25 | | ± .015 | | MATERIAL NO. | | DOCUMENT NO. | | SHEET NO. | |
| 1 PLACE ± .38 | | ± --- | | SEE CHART | | SD-5558-*S* | | 2 OF 2 | |
| 0 PLACE ± --- | | ± --- | | ANGULAR ±1/2° | | THIS DRAWING CONTAINS INFORMATION THAT IS PROPRIETARY TO MOLEX INCORPORATED AND SHOULD NOT BE USED WITHOUT WRITTEN PERMISSION | | | |
| DRAFT WHERE APPLICABLE MUST REMAIN WITHIN DIMENSIONS | | SIZE C | | | | | | | |