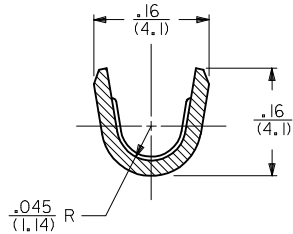
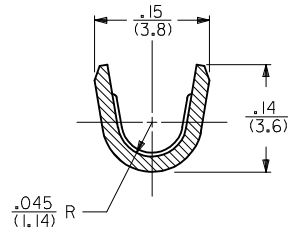


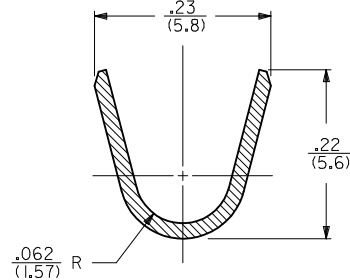
SECTION A-A
SCALE 8:1



SECTION B-B
SCALE 8:1
14 AWG WIRE



SECTION B-B
SCALE 8:1
18-16 AWG WIRE



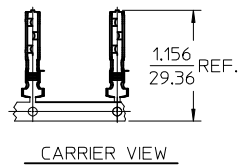
SECTION C-C
SCALE 8:1

NOTES:

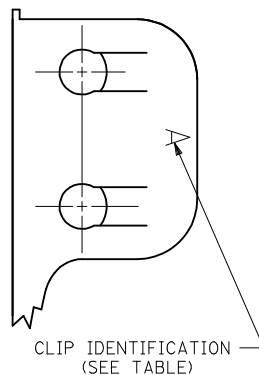
1. THIS GROUND CLIP CRIMPS TO #14- #18 AWG WIRE WITH .031/(.79) THICK INSULATION, SEE CHART, AND IS INTENDED FOR USE ONLY AS A SECONDARY GROUND.

MATERIAL:

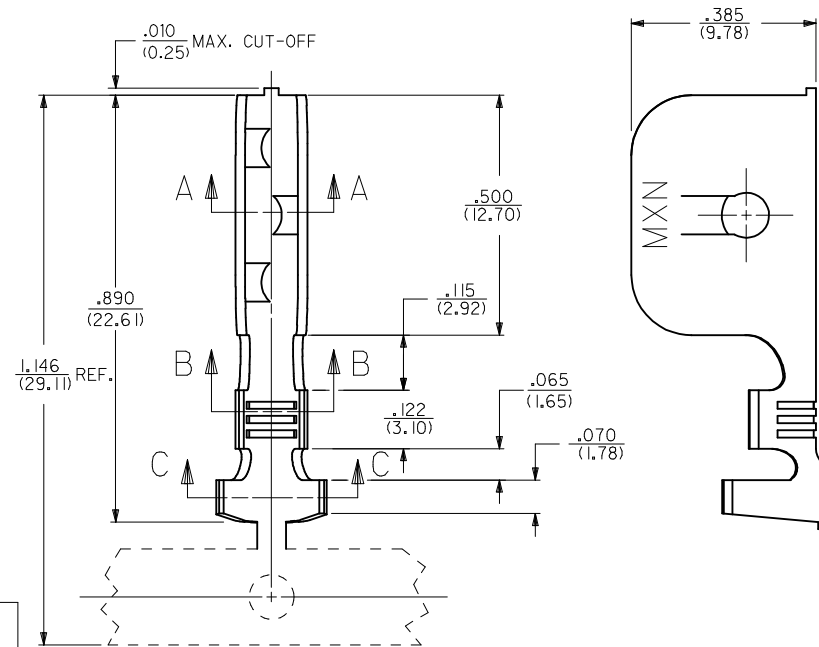
STEEL, STAINLESS, TYPE 301,
.020/(.51) THICK.



CARRIER VIEW



CLIP IDENTIFICATION
(SEE TABLE)



PART NO.	ENG. NO.	DIM. "D"	DIM. "E"	PANEL THICKNESS RANGE	WIRE GAGE	DOUBLE WIRE COMBINATION
040-06-2015	42172-BBI	.025/(0.64)	.17/(4.3)	.035/(0.89)-.050/(1.27)	14 AWG	(2) #16 AWG
040-06-2014	42172-AAI	.008/(0.20)	.15/(3.8)	.015/(0.38)-.035/(0.89)	14 AWG	
050-29-1597	42172-HI	.035/(0.89)	.17/(4.3)	.045/(1.14)-.060/(1.52)	18-16 AWG	
040-06-2017	42172-FI	.015/(0.38)	.15/(3.8)	.020/(0.51)-.030/(0.76)	18-16 AWG	
040-06-2013	42172-CI	.050/(1.27)	.17/(4.3)	.060/(1.52)-.075/(1.91)	18-16 AWG	(2) #18 AWG OR
040-06-2005	42172-BI	.025/(0.64)	.17/(4.3)	.035/(0.89)-.050/(1.27)	18-16 AWG	(1) #18 & (1) #16
040-06-2003	42172-AI	.008/(0.20)	.15/(3.8)	.015/(0.38)-.035/(0.89)	18-16 AWG	
040-06-2024	42172-GI	.004/(0.10)	.15/(3.8)	.015/(0.38)-.035/(0.89)	18-16 AWG	

<p>MOVE DIM E EC NO: UCP2015-5495 DRAWN: MONTI 2015/06/25 CHKD: JHK/PPR 2015/06/25 APPR: FSM/LTH 2015/06/30</p>	<p>QUALITY SYMBOLS ▽=0 ▽=0 ▽=0</p>	<p>GENERAL TOLERANCES (UNLESS SPECIFIED)</p> <table border="1"> <thead> <tr> <th></th> <th>mm</th> <th>INCH</th> </tr> </thead> <tbody> <tr> <td>4 PLACES</td> <td>± .010</td> <td>± .0004</td> </tr> <tr> <td>3 PLACES</td> <td>± .015</td> <td>± .0006</td> </tr> <tr> <td>2 PLACES</td> <td>± 0.25</td> <td>± .010</td> </tr> <tr> <td>1 PLACE</td> <td>± 0.35</td> <td>± .014</td> </tr> <tr> <td>0 PLACE</td> <td>±</td> <td>±</td> </tr> </tbody> </table>			mm	INCH	4 PLACES	± .010	± .0004	3 PLACES	± .015	± .0006	2 PLACES	± 0.25	± .010	1 PLACE	± 0.35	± .014	0 PLACE	±	±	<p>DIMENSION STYLE IN/MM</p>	<p>SCALE 5:1</p>	<p>DESIGN UNITS INCH</p>	<p>THIRD ANGLE PROJECTION</p>
			mm	INCH																					
		4 PLACES	± .010	± .0004																					
		3 PLACES	± .015	± .0006																					
2 PLACES	± 0.25	± .010																							
1 PLACE	± 0.35	± .014																							
0 PLACE	±	±																							
<p>ANGULAR ±1/2°</p>		<p>DRAWN BY MAB</p>	<p>DATE 07-24-92</p>	<p>TITLE GROUND CLIP</p>																					
<p>DRAFT WHERE APPLICABLE MUST REMAIN WITHIN DIMENSIONS</p>		<p>CHECKED BY KBP</p>	<p>DATE 07-24-92</p>	<p>molex</p>																					
<p>REV R3</p>	<p>DESCRIPTION</p>	<p>APPROVED BY RAS</p>	<p>DATE 07-24-92</p>	<p>MATERIAL NO. SEE CHART</p>	<p>DOCUMENT NO. SD-42172-***</p>	<p>SHEET NO. 1 OF 1</p>	<p>THIS DRAWING CONTAINS INFORMATION THAT IS PROPRIETARY TO MOLEX INCORPORATED AND SHOULD NOT BE USED WITHOUT WRITTEN PERMISSION</p>																		