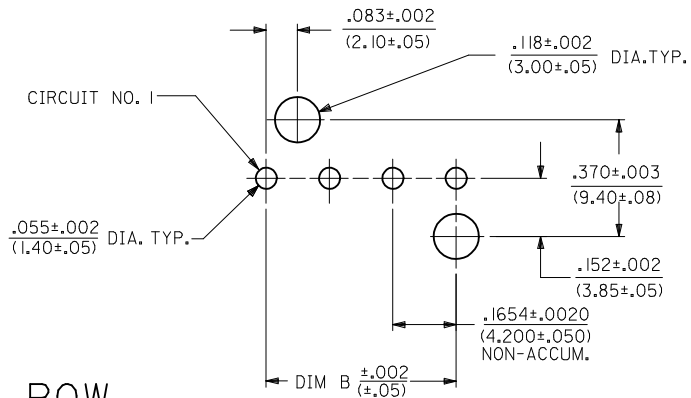
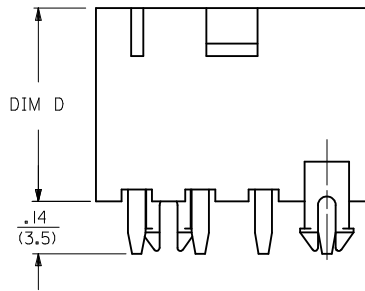
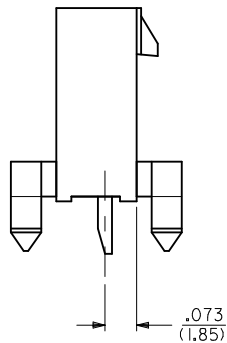
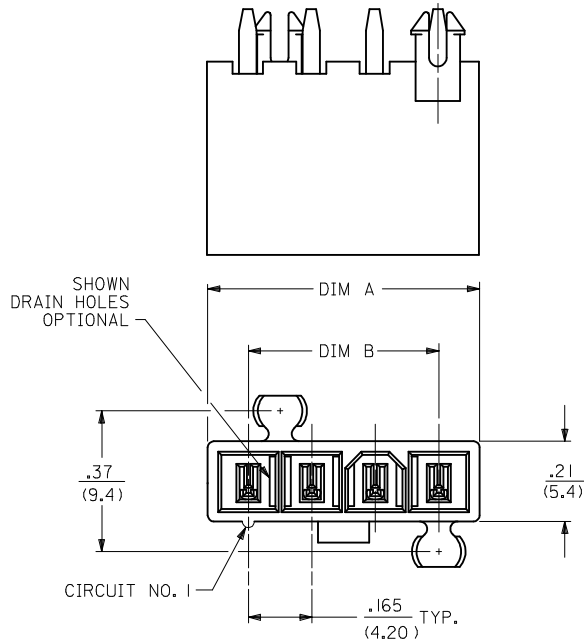


CKT SIZE	DIM A	DIM B	DIM D
3	.54 (13.8)	.331 (8.40)	.49 (12.5)
4	.71 (18.0)	.496 (12.60)	.50 (12.8)
5	.87 (22.2)	.661 (16.80)	.50 (12.8)



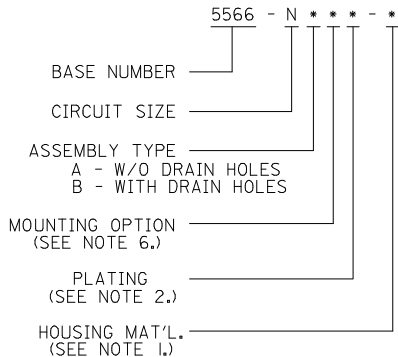
4	A1
3	A1
2	A
1	A1
SHT	REV

RECOMMENDED HOLE LAYOUT FOR
.070/(1.78) MAX. THICK P.C. BOARD
VIEWED FROM COMPONENT SIDE

SEE SHT. 2 FOR DUAL ROW
* THE CHART FOR SINGLE ROW PRODUCT IS ON PAGE 3

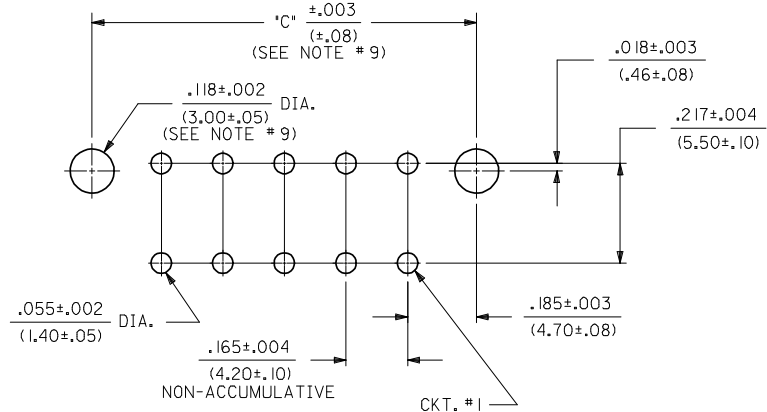
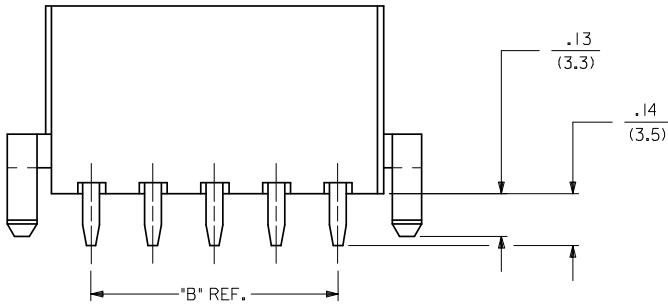
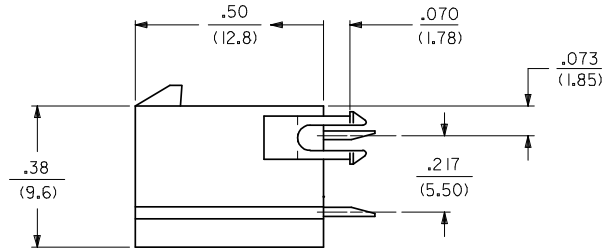
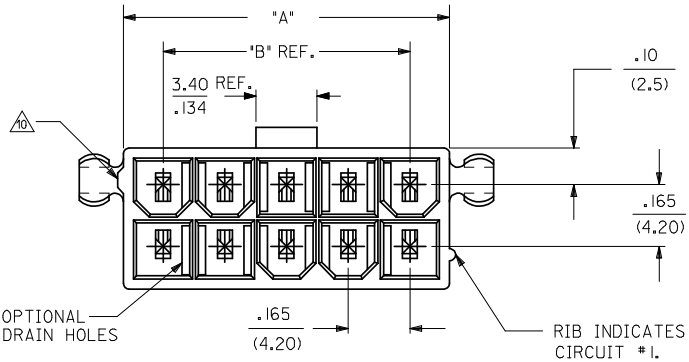
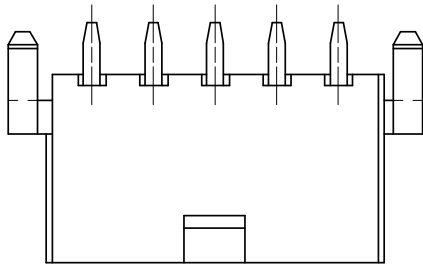
- NOTES:
- MATERIALS:
HOUSING:
225=NYLON (PA6), UL94 V-0, COLOR: BLACK, IEC 60335-1, 4th EDITION GLOW WIRE CAPABLE
225N=NYLON (PA6), UL94V-0, COLOR: WHITE, IEC 60335-1, 4th EDITION GLOW WIRE CAPABLE
TERMINALS:
BRASS
2. TERMINAL PLATING:
S=.000100/(0.00254) MIN. BRIGHT TIN OVER
.000050/(0.00127) MIN. NICKEL
 - PRODUCT SPECIFICATION: PS-5556-001
 - PACKAGING: SEE CHARTS
 - PART MATES WITH MINI-FIT JR. RECEPTACLE NO. 5557.
 - MOUNTING OPTIONS:
BLANK=DUAL ROW WITHOUT PEGS
2=DUAL ROW WITH MOUNTING PEGS
3=SINGLE ROW WITH MOUNTING PEGS
 - PART IS NOT DESIGNED FOR CURRENT SHARING.
 - PARTS ARE NOT DESIGNED TO BE MATED OR UN-MATED WHILE CIRCUITS ARE LIVE.
 - LOCATION OF .118±.002/(3.00±0.05) DIAMETER HOLES ON P.C. BOARD IS FOR OPTIONAL PEGS.
 - ANTI-SHINGLING RIB MAY OR MAY NOT APPEAR ON HOUSINGS.
 - PART CONFORMS TO CLASS "B" REQUIREMENTS OF COSMETIC SPECIFICATION PS-45499-002 WITH THE EXCEPTION OF DISCOLORATION, FLASH AND SINK ON THE HOUSING MEET CLASS "C" REQUIREMENTS.

LEGEND:



REV	DESCRIPTION	QUALITY SYMBOLS	GENERAL TOLERANCES (UNLESS SPECIFIED)	DIMENSION STYLE	SCALE	DESIGN UNITS	THIRD ANGLE PROJECTION
A1	ADD *225N* EC NO: UCP2009-0680 DRAWING: DRWINGVERILL 2008/09/26 CHKD: SSOUSEK 2008/09/29 APPR: FSMITH 2008/09/29	▽=0 ▽=0	mm INCH 4 PLACES ± --- ± --- 3 PLACES ± --- ± .015 2 PLACES ± 0.38 ± .020 1 PLACE ± 0.50 ± --- ANGULAR ± 1/2°	IN/MM	4:1	METRIC	THIRD ANGLE PROJECTION
				DRAWN BY DATE LSCHEMIDT 2008/01/22	TITLE	MINI-FIT VERT HDR ASSY W & W/O PEGS/DRAIN HOLES SINGLE AND DUAL ROW	
				CHECKED BY DATE ADERR 2008/01/24	MOLEX INCORPORATED		
				APPROVED BY DATE FSMI THROEMER 2008/01/25	DOCUMENT NO.	SD-5566-225	SHEET NO. 1 OF 4
			DRAFT WHERE APPLICABLE MUST REMAIN WITHIN DIMENSIONS	SIZE C	THIS DRAWING CONTAINS INFORMATION THAT IS PROPRIETARY TO MOLEX INCORPORATED AND SHOULD NOT BE USED WITHOUT WRITTEN PERMISSION		

CIRCUIT SIZE	DIM. "A"	DIM. "B"	DIM. "C"
2	.21 (5.4)	—	.370 (9.40)
4	.38 (9.6)	.17 (4.2)	.535 (13.60)
6	.54 (13.8)	.33 (8.4)	.701 (17.80)
8	.71 (18.0)	.50 (12.6)	.866 (22.00)
10	.87 (22.2)	.66 (16.8)	1.031 (26.20)
12	1.04 (26.4)	.83 (21.0)	1.197 (30.40)
14	1.20 (30.6)	.99 (25.2)	1.362 (34.60)
16	1.37 (34.8)	1.16 (29.4)	1.528 (38.80)
18	1.54 (39.0)	1.32 (33.6)	1.693 (43.00)
20	1.70 (43.2)	1.49 (37.8)	1.858 (47.20)
22	1.87 (47.4)	1.65 (42.0)	2.024 (51.40)
24	2.03 (51.6)	1.82 (46.2)	2.189 (55.60)



RECOMMENDED HOLE LAYOUT FOR .070/(1.78) MAX. THICK P.C. BOARD
VIEWED FROM COMPONENT SIDE

SEE SHT. 1 FOR SINGLE ROW
* THE CHART FOR DUAL ROW PRODUCT IS ON PAGE 4

RELEASED EC NO: UCP2007-3159 DRAWN: SCHMIDT 2008/02/08 CHKD: ADERR 2008/02/08 APPR: FSM/TH 2008/02/12	QUALITY SYMBOLS	GENERAL TOLERANCES (UNLESS SPECIFIED)	DIMENSION STYLE	SCALE	DESIGN UNITS	THIRD ANGLE PROJECTION
	$\nabla=0$ $\nabla=0$	mm INCH 4 PLACES ± --- ± --- 3 PLACES ± --- ± .015 2 PLACES ± 0.38 ± .020 1 PLACE ± 0.50 ± --- ANGULAR ± 1/2°	IN/MM	4:1	METRIC	
	DESCRIPTION	APPROVED BY	DATE	TITLE	MINI-FIT VERT HDR ASSY W & W/O PEGS/DRAIN HOLES SINGLE AND DUAL ROW	
	REV	DATE	DATE	MOLEX INCORPORATED DOCUMENT NO. SD-5566-225 SHEET NO. 2 OF 4		

13	12	11	10	9	8	7	6	5	4	3	2	1		
PLATING:		100 M.I. TIN - PLATING CODE 'S'		PLATING:		100 M.I. TIN - PLATING CODE 'S'		PLATING:		100 M.I. TIN - PLATING CODE 'S'		PLATING:	100 M.I. TIN - PLATING CODE 'S'	
DRAIN HOLES:		WITHOUT DRAIN HOLES		DRAIN HOLES:		WITHOUT DRAIN HOLES		DRAIN HOLES:		WITH DRAIN HOLES		DRAIN HOLES:	WITH DRAIN HOLES	
MTG. OPTION:		WITHOUT PEGS		MTG. OPTION:		WITH PEGS		MTG. OPTION:		WITHOUT PEGS		MTG. OPTION:	WITH PEGS	
PACKAGING:		TRAY PACK PER PK-5566-001		PACKAGING:		TRAY PACK PER PK-5566-001		PACKAGING:		TRAY PACK PER PK-5566-001		PACKAGING:	TRAY PACK PER PK-5566-001	
COLOR:		BLACK		COLOR:		BLACK		COLOR:		BLACK		COLOR:	BLACK	
PART NO.	ENG. NO.	CKTS		PART NO.	ENG. NO.	CKTS		PART NO.	ENG. NO.	CKTS		PART NO.	ENG. NO.	CKTS
50-36-1882	5566-02AS-225	2		50-36-1699	5566-02A2S-225	2		NOT TOOLED	5566-02BS-225	2		NOT TOOLED	5566-02B2S-225	2
50-36-1884	5566-04AS-225	4		50-36-1702	5566-04A2S-225	4		NOT TOOLED	5566-04BS-225	4		NOT TOOLED	5566-04B2S-225	4
50-36-1697	5566-06AS-225	6		50-36-1704	5566-06A2S-225	6		NOT TOOLED	5566-06BS-225	6		NOT TOOLED	5566-06B2S-225	6
50-36-1683	5566-08AS-225	8		50-36-1706	5566-08A2S-225	8		NOT TOOLED	5566-08BS-225	8		NOT TOOLED	5566-08B2S-225	8
50-36-1741	5566-10AS-225	10		50-36-1708	5566-10A2S-225	10		NOT TOOLED	5566-10BS-225	10		NOT TOOLED	5566-10B2S-225	10
50-36-1886	5566-12AS-225	12		50-36-1711	5566-12A2S-225	12		NOT TOOLED	5566-12BS-225	12		NOT TOOLED	5566-12B2S-225	12
50-36-1888	5566-14AS-225	14		NOT TOOLED	5566-14A2S-225	14		NOT TOOLED	5566-14BS-225	14		NOT TOOLED	5566-14B2S-225	14
50-36-1891	5566-16AS-225	16		NOT TOOLED	5566-16A2S-225	16		NOT TOOLED	5566-16BS-225	16		NOT TOOLED	5566-16B2S-225	16
NOT TOOLED	5566-18AS-225	18		NOT TOOLED	5566-18A2S-225	18		NOT TOOLED	5566-18BS-225	18		NOT TOOLED	5566-18B2S-225	18
NOT TOOLED	5566-20AS-225	20		NOT TOOLED	5566-20A2S-225	20		NOT TOOLED	5566-20BS-225	20		NOT TOOLED	5566-20B2S-225	20
NOT TOOLED	5566-22AS-225	22		NOT TOOLED	5566-22A2S-225	22		NOT TOOLED	5566-22BS-225	22		NOT TOOLED	5566-22B2S-225	22
NOT TOOLED	5566-24AS-225	24		NOT TOOLED	5566-24A2S-225	24		NOT TOOLED	5566-24BS-225	24		NOT TOOLED	5566-24B2S-225	24
	-				-				-				-	
	-				-				-				-	

PLATING:		100 M.I. TIN - PLATING CODE 'S'	
DRAIN HOLES:		WITHOUT DRAIN HOLES	
MTG. OPTION:		WITH PEGS	
PACKAGING:		TRAY PACK PER PK-5566-001	
COLOR:		WHITE	
PART NO.	ENG. NO.	CKTS	
		2	
50-36-2304	5566-04A2S-225N	4	
		6	
		8	
		10	
		12	
		14	
		16	
		18	
		20	
		22	
		24	

ADD 50-36-2304 EC NO: UCP2009-0680 DRWG:GVERILL 2008/09/26 CHKD:SSOUSEK 2008/09/29 APPR:FSMITH 2008/09/29 DESCRIPTION REV	QUALITY SYMBOLS	GENERAL TOLERANCES (UNLESS SPECIFIED) <table border="1"> <tr> <td></td> <td>mm</td> <td>INCH</td> </tr> <tr> <td>4 PLACES</td> <td>± ---</td> <td>± ---</td> </tr> <tr> <td>3 PLACES</td> <td>± ---</td> <td>± ---</td> </tr> <tr> <td>2 PLACES</td> <td>± ---</td> <td>± ---</td> </tr> <tr> <td>1 PLACE</td> <td>± ---</td> <td>± ---</td> </tr> </table> ANGULAR ± ---°		mm	INCH	4 PLACES	± ---	± ---	3 PLACES	± ---	± ---	2 PLACES	± ---	± ---	1 PLACE	± ---	± ---	DIMENSION STYLE IN/MM	SCALE ---	DESIGN UNITS METRIC	THIRD ANGLE PROJECTION
			mm	INCH																	
	4 PLACES		± ---	± ---																	
	3 PLACES		± ---	± ---																	
2 PLACES	± ---	± ---																			
1 PLACE	± ---	± ---																			
DRAWN BY LSCHMIDT	DATE 2008/01/22	TITLE MINI-FIT VERT HDR ASSY W & W/O PEGS/DRAIN HOLES SINGLE AND DUAL ROW																			
CHECKED BY ADERR	DATE 2001/01/24	MOLEX INCORPORATED																			
APPROVED BY FSMI THROEMER	DATE 2008/01/25	MATERIAL NO. SEE CHART																			
DRAFT WHERE APPLICABLE MUST REMAIN WITHIN DIMENSIONS		DOCUMENT NO. SD-5566-225	SHEET NO. 4 OF 4																		
THIS DRAWING CONTAINS INFORMATION THAT IS PROPRIETARY TO MOLEX INCORPORATED AND SHOULD NOT BE USED WITHOUT WRITTEN PERMISSION																					