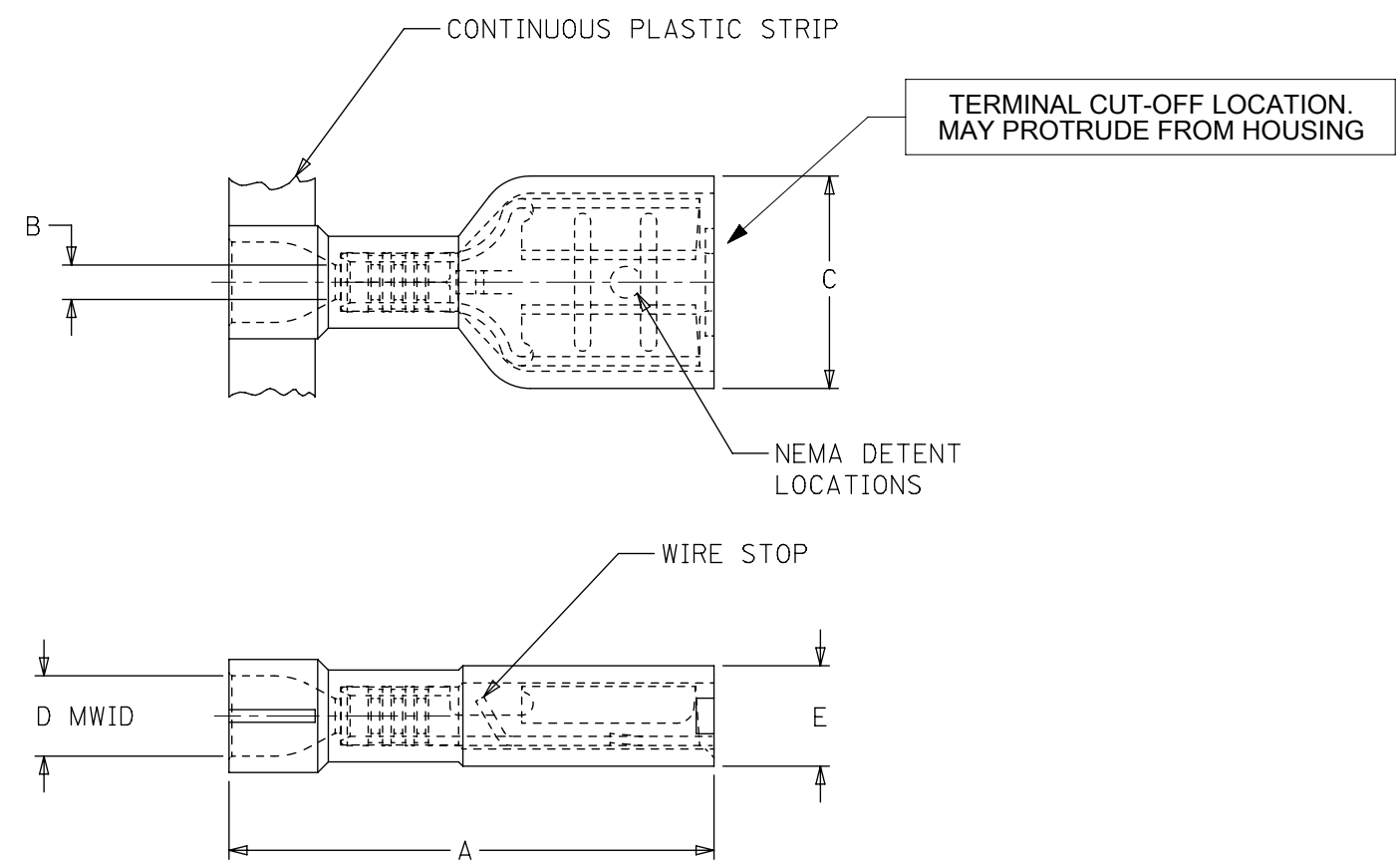


10	9	8	7	6	5	4	3	2	1	
MOLEX-ETC PART NO.	INS. COLOR	WIRE RANGE AWG	FITS MALE TAB SIZE	STOCK THICK.	"A" MAX.	"B" MIN.	"C" MAX.	"D" MWID	"E" MAX.	CARRIER CONFIGURATION
190030138	YELLOW	26-24	.187X.020	.016/0.41	.78/19.8	.030/0.76	.316/8.03	.075/1.91	.160/4.06	LOOSE PIECE
190030139	YELLOW	26-24	.187X.020	.016/0.41	.78/19.8	.030/0.76	.316/8.03	.075/1.91	.160/4.06	TAPE MOUNT
190030140	YELLOW	26-24	.187X.020	.016/0.41	.78/19.8	.030/0.76	.316/8.03	.075/1.91	.160/4.06	PLASTIC STRIP
190030141	YELLOW	26-24	.187X.032	.016/0.41	.78/19.8	.030/0.76	.316/8.03	.075/1.91	.160/4.06	LOOSE PIECE
190030142	YELLOW	26-24	.187X.032	.016/0.41	.78/19.8	.030/0.76	.316/8.03	.075/1.91	.160/4.06	TAPE MOUNT
190030143	YELLOW	26-24	.187X.032	.016/0.41	.78/19.8	.030/0.76	.316/8.03	.075/1.91	.160/4.06	PLASTIC STRIP



- MATERIAL: TERMINAL: BRASS  
PLATING: ELECTRO-TIN  
INSULATION: NYLON 6/6 94V-0 RATING  
COLOR: SEE CHART
- MWID = MAXIMUM WIRE INSULATION DIAMETER
- ALL DIMENSIONS = INCHES/MM

SALES DRAWING

THIS DRAWING CONTAINS INFORMATION THAT IS PROPRIETARY TO MOLEX ELECTRONIC TECHNOLOGIES, LLC AND SHOULD NOT BE USED WITHOUT WRITTEN PERMISSION									
DIMENSION UNITS		SCALE		CURRENT REV DESC: MIGRATED TO NX					
INCH/MM		NTS		<b>molex</b> FIQD FEMALE, INSULKRIMP 94V-0 MATERIAL 26-24 AWG PRODUCT CUSTOMER DRAWING					
GENERAL TOLERANCES (UNLESS SPECIFIED)									
	MM	INCH							
4 PLACES	±		±						
3 PLACES	±		± 0.005						
2 PLACES	±	0.13	± 0.01						
1 PLACE	±	0.25	±						
0 PLACES	±		±						
ANGULAR TOL ± 0.5°				EC NO: 611423		2019/01/28			
DRAFT WHERE APPLICABLE MUST REMAIN WITHIN DIMENSIONS				THIRD ANGLE PROJECTION		DRAWING		SERIES	
						B-SIZE		19003	
DOCUMENT NUMBER		DOC TYPE		DOC PART		REVISION			
SD-19003-003		PSD		001		A1			
MATERIAL NUMBER		CUSTOMER		SHEET NUMBER					
SEE TABLE		GENERAL MARKET		1 OF 1					

DOCUMENT STATUS	P1	RELEASE DATE	2019/02/05	05:29:23
-----------------	----	--------------	------------	----------