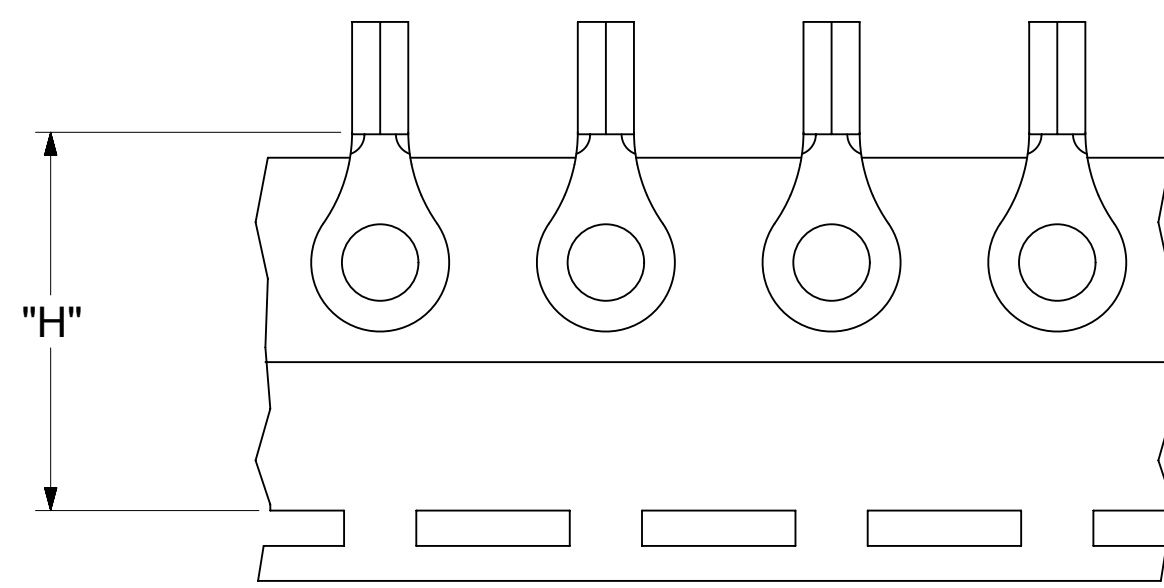
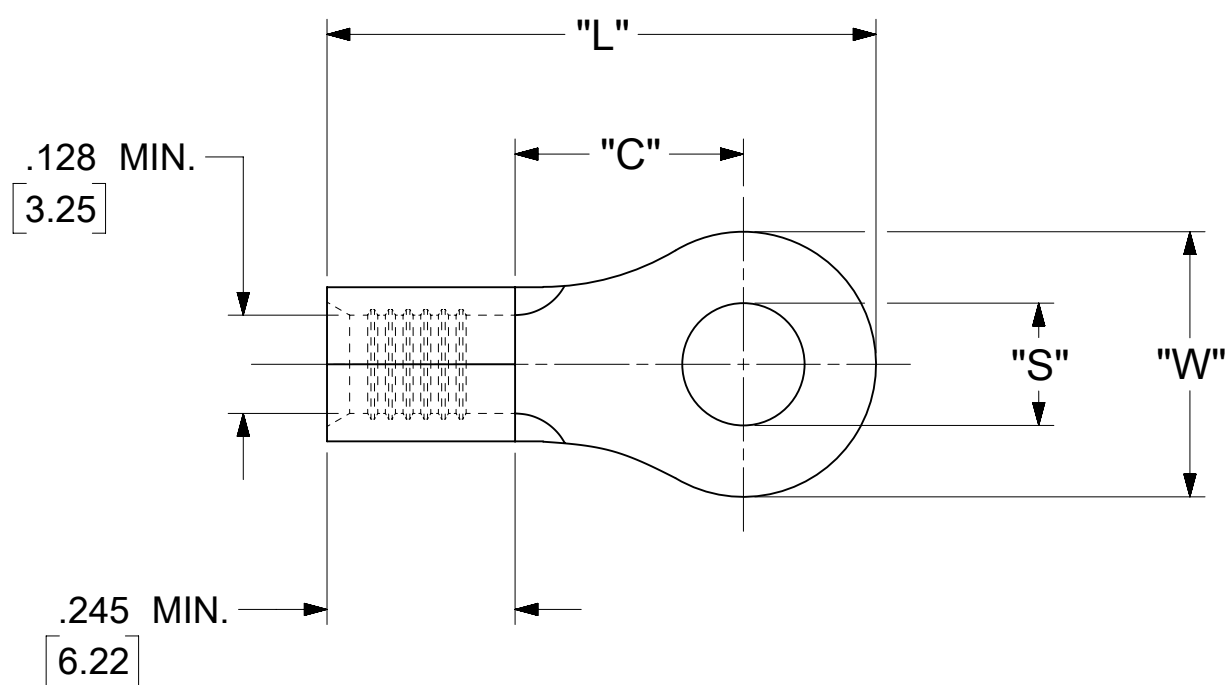


LOOSE PIECE		TAPE MOUNTED		SPECIFICATIONS					
MATERIAL NUMBER	ENGINEERING NUMBER	MATERIAL NUMBER	ENGINEERING NUMBER	STUD SIZE	"S" ±.005 [0.13]	"W" ±.010 [0.25]	"C" MIN.	"L" MAX.	"H"
190690192	C-101-12	---	---	12	.515 [13.08]	.750 [19.05]	.611 [15.52]	1.280 [32.51]	1.300 [33.02]
190690195	C-101-14	---	---	14	.265 [6.73]				
190690196	C-101-38	190690145	C-101-38T	38	.390 [9.91]				
---	---	---	---	56	.328 [8.33]				
190690198	C-101-76	190690146	C-101-76T	76	.453 [11.51]				
190690217	C-130-10	190690218	C-130-10T	10	.198 [5.03]	.530 [13.46]	.393 [9.98]	.952 [24.18]	.980 [24.89]
190690219	C-130-14	190690221	C-130-14T	14	.265 [6.73]				
---	---	---	---	38	.390 [9.91]				
190690223	C-130-56	190690225	C-130-56T	56	.328 [8.33]	.282 [7.16]	.306 [7.77]	.741 [18.82]	.980 [24.89]
---	---	---	---	4	.119 [3.02]				
190690230	C-136-06	190690232	C-136-06T	6	.146 [3.71]				
190690233	C-136-08	190690235	C-136-08T	8	.173 [4.39]				
190690236	C-140-10	---	---	10	.198 [5.03]				
190690238	C-140-14	190690240	C-140-14T	14	.265 [6.73]	.592 [15.04]	.468 [11.89]	1.056 [26.82]	1.172 [29.77]
190690241	C-140-38	190690243	C-140-38T	38	.390 [9.91]				
190690244	C-140-56	190690246	C-140-56T	56	.328 [8.33]				
---	---	---	---	209	.209 [5.31]				
---	---	---	---	413	.413 [10.50]				



PARTS ON TAPE

- NOTES:
1. MATERIAL: COPPER .040±.001 [1.02] STOCK THK.
  2. PLATING: ELECTRO-TIN (.0003 MIN).
  3. WIRE SIZE: 12-10 AWG  
4.0-6.0 MM<sup>2</sup>
  4. "UL" LISTING #E32244  
"CSA" LISTING #18689
  5. ALL DIMENSIONS IN INCHES/[MM].
  6. PARTS ARE ROHS COMPLIANT.
  7. DIMS. SHOWN ARE FOR REFERENCE ONLY.

SYMBOLS	THIS DRAWING CONTAINS INFORMATION THAT IS PROPRIETARY TO MOLEX ELECTRONIC TECHNOLOGIES, LLC AND SHOULD NOT BE USED WITHOUT WRITTEN PERMISSION			
	DIMENSION UNITS	SCALE		CURRENT REV DESC: MIGRATION TO ECTR/NX
▽ = 0	INCH/MM	NTS		<b>molex</b> RING TONGUE TERMINAL KRIMPTITE 100-SERIES PRODUCT CUSTOMER DRAWING
▽ = 0	GENERAL TOLERANCES (UNLESS SPECIFIED)			
▽ = 0		MM	INCH	
▽ = 0	4 PLACES	±	±	
▽ = 0	3 PLACES	±	± 0.005	
▽ = 0	2 PLACES	± 0.13	± 0.01	EC NO: 619818 DRWN: ABENJAMINLW 2019/06/18 CHK'D: GROJAS01 2019/06/27 APPR: JMACNEIL 2019/07/10
▽ = 0	1 PLACE	± 0.25	±	INITIAL REVISION:
▽ = 0	0 PLACES	±	±	DRWN: EDWIN 1992/02/10 APPR: JMACNEIL 2019/07/10
▽ = 0	ANGULAR TOL ± 0.5 °		THIRD ANGLE PROJECTION	DRAWING SERIES
▽ = 0	DRAFT WHERE APPLICABLE MUST REMAIN WITHIN DIMENSIONS			C-SIZE 19069
DOCUMENT STATUS		P1	RELEASE DATE	2019/07/10 15:39:28
DOCUMENT NUMBER		DOC TYPE		DOC PART
190690192		PSD		000
MATERIAL NUMBER		CUSTOMER		SHEET NUMBER
SEE TABLE		GENERAL MARKET		1 OF 1