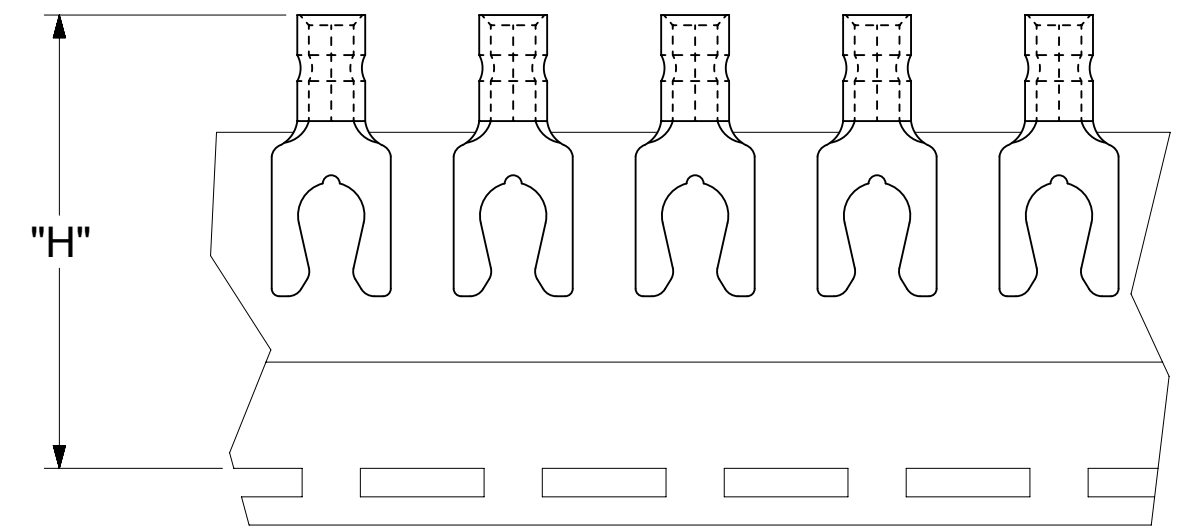
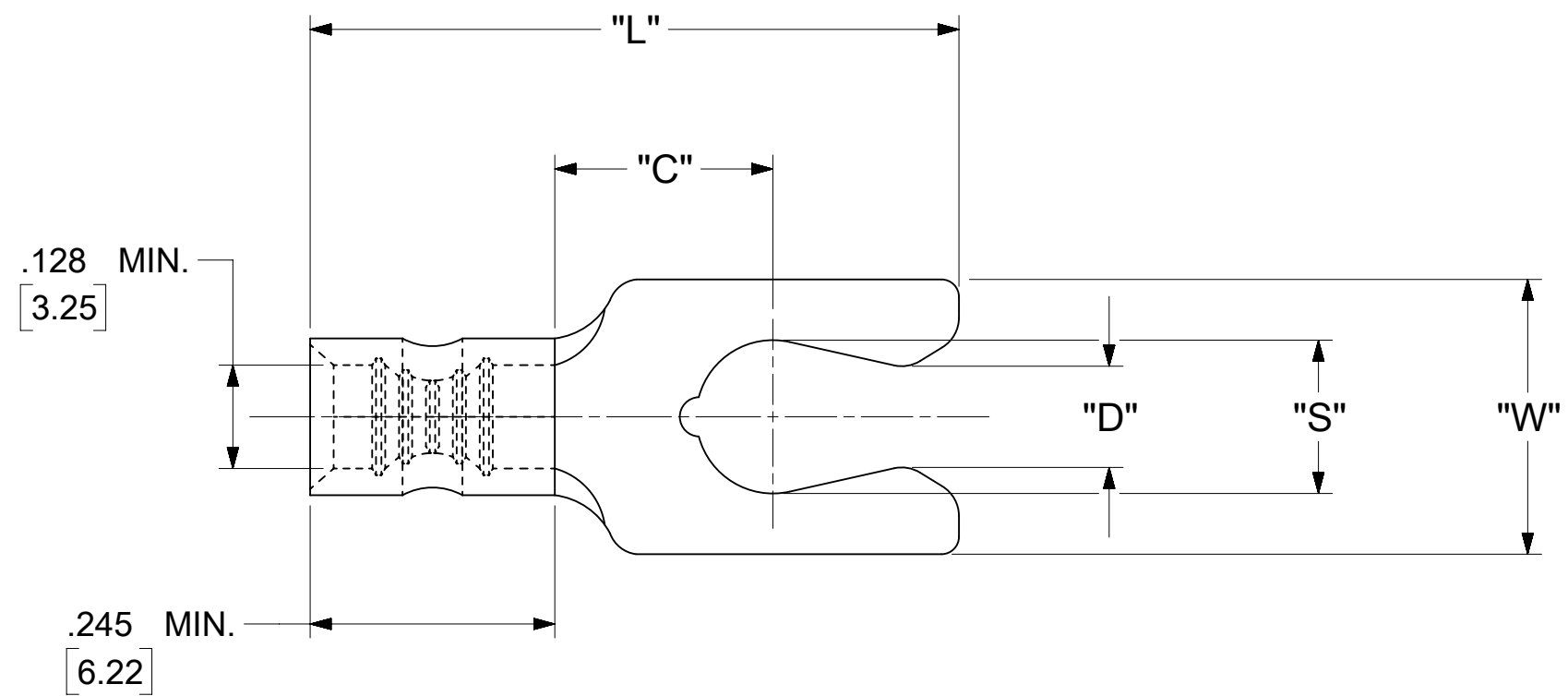


LOOSE PIECE		TAPE MOUNTED		SPECIFICATIONS						
MATERIAL NUMBER	ENGINEERING NUMBER	MATERIAL NUMBER	ENGINEERING NUMBER	STUD SIZE	"S" ±.005 [0.13]	"W" ±.010 [0.25]	"C" MIN.	"L" MAX.	"D" ±.005 [0.13]	"H"
190980068	C-1710-05	---	---	5	.127 [3.23]	.250 [6.35]	.230 [5.84]	.664 [16.87]	.105 [2.67]	---
190980069	C-1710-06	190980070	C-1710-06T	6	.146 [3.71]	.250 [6.35]	.230 [5.84]	.664 [16.87]	.114 [2.90]	1.234 [31.34]



PARTS ON TAPE

NOTES:

- MATERIAL: TERMINAL: COPPER (STOCK THICKNESS .040±.001 [1.02])
PLATING: ELECTRO-TIN (.0003 MIN.)
- WIRE SIZE: 12 -10 AWG
4.0 -6.0 MM²
- "UL" LISTING #E32244
"CSA" LISTING #18689
- ALL DIMENSIONS IN INCHES/[MM].
- PARTS ARE ROHS COMPLIANT.
- DIMS. SHOWN ARE FOR REFERENCE ONLY.

SYMBOLS	THIS DRAWING CONTAINS INFORMATION THAT IS PROPRIETARY TO MOLEX ELECTRONIC TECHNOLOGIES, LLC AND SHOULD NOT BE USED WITHOUT WRITTEN PERMISSION		CURRENT REV DESC:	
	DIMENSION UNITS	SCALE		
∇ = 0	INCH/MM	NTS		
∇ = 0	GENERAL TOLERANCES (UNLESS SPECIFIED)			
∇ = 0		MM	INCH	
∇ = 0	4 PLACES	± ---	± ---	
∇ = 0	3 PLACES	± ---	± .005	
∇ = 0	2 PLACES	± 0.13	± .01	
∇ = 0	1 PLACE	± 0.25	± ---	
∇ = 0	0 PLACES	± ---	± ---	
∇ = 0	ANGULAR TOL	± 0.5 °		
∇ = 0	DRAFT WHERE APPLICABLE MUST REMAIN WITHIN DIMENSIONS		THIRD ANGLE PROJECTION	DRAWING
∇ = 0			C-SIZE	SERIES
			19098	1984/10/17
			2019/03/19	2019/08/28
			2019/10/17	2019/10/17
			2019/10/18	2019/10/18
			INITIAL REVISION:	
			DRWN: KO	1984/10/17
			APPR: RFC_PLMIMP	2019/03/19
DOCUMENT NUMBER		DOC TYPE	DOC PART	REVISION
CCD10502		PSD	001	A
MATERIAL NUMBER		CUSTOMER		SHEET NUMBER
SEE TABLE		GENERAL MARKET		1 OF 1

molex

SNAP SPADE SHORT
TONGUE TERMINAL KRIMP TITE 100-SERIES

PRODUCT CUSTOMER DRAWING