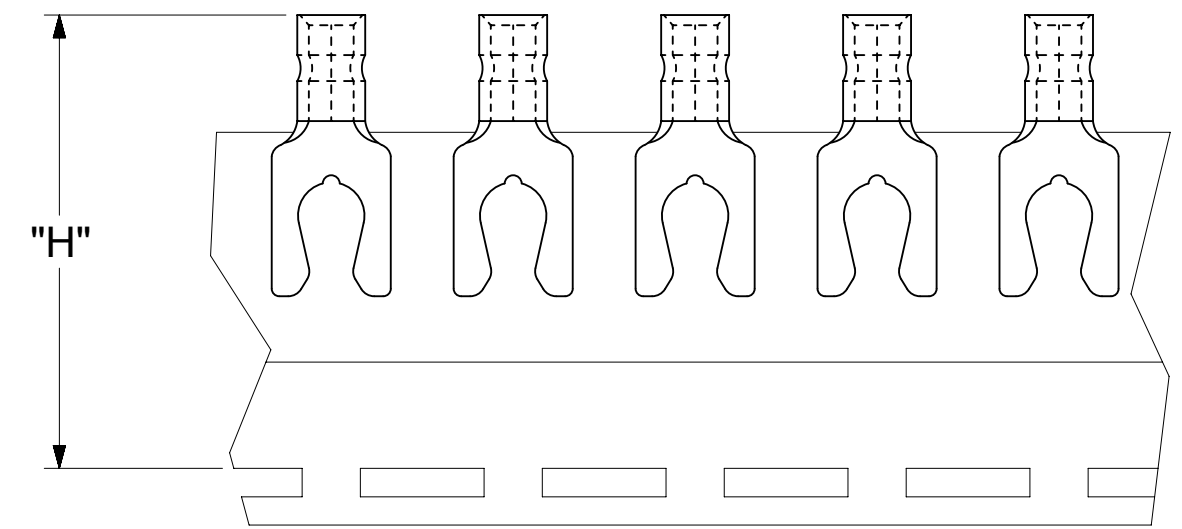
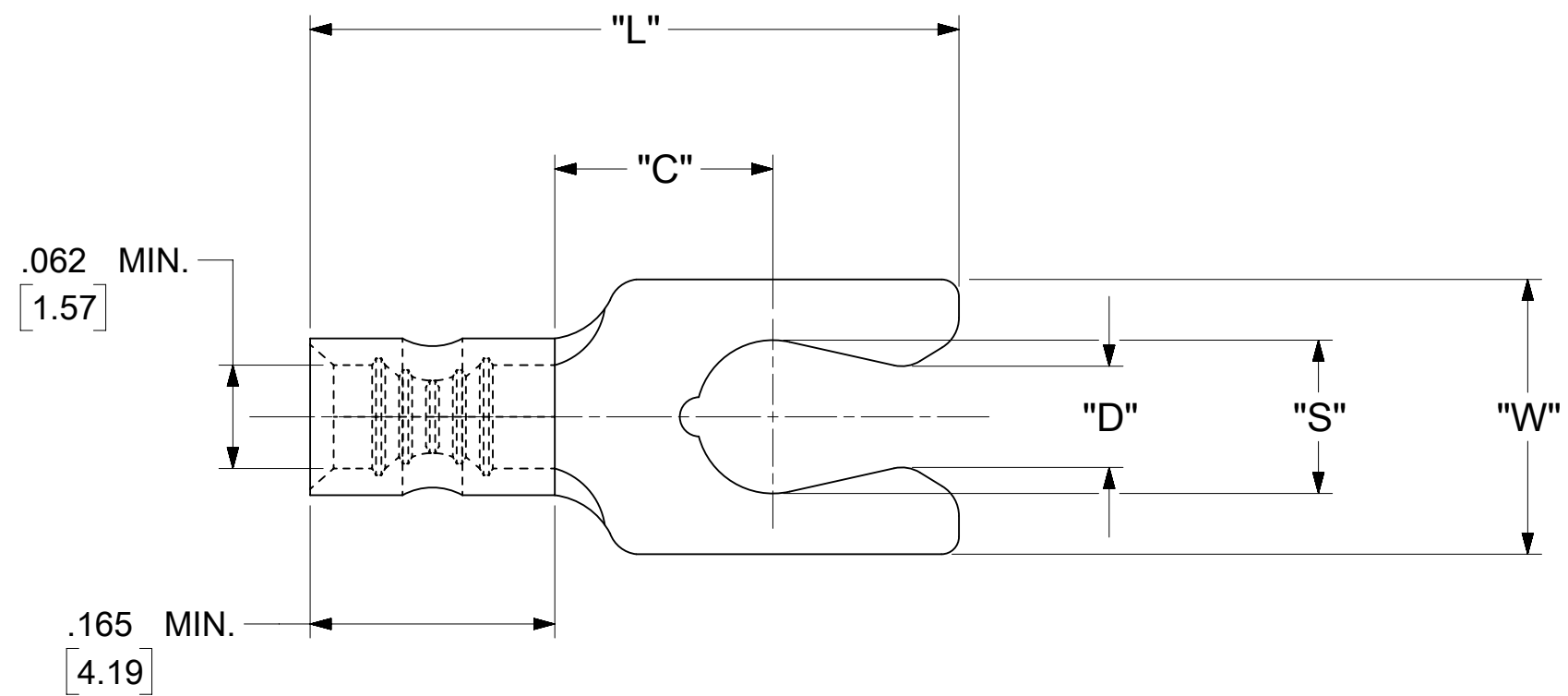


LOOSE PIECE		TAPE MOUNTED		SPECIFICATIONS						
MATERIAL NUMBER	ENGINEERING NUMBER	MATERIAL NUMBER	ENGINEERING NUMBER	STUD SIZE	"S" ±.005 [0.13]	"W" ±.010 [0.25]	"C" MIN.	"L" MAX.	"D" ±.005 [0.13]	"H"
190980023	AA-1714-08	190980080	AA-1714-08T	8	.173 [4.39]	.310 [7.87]	.261 [6.63]	.646 [16.41]	.139	1.155 [29.34]
190980024	AA-1715-10	190980081	AA-1715-10T	10	.198 [5.03]	.330 [8.38]	.261 [6.63]	.694 [17.63]	.156	1.155 [29.34]



PARTS ON TAPE

NOTES:

- MATERIAL: TERMINAL: COPPER (STOCK THICKNESS $.028 \frac{+.001}{-.000}$ [0.71]
PLATING: ELECTRO-TIN (.0003 MIN.)
- WIRE SIZE: 22 -18 AWG
0.25 -1.5 MM²
- "UL" LISTING #E32244
"CSA" LISTING #18689
- ALL DIMENSIONS IN INCHES/[MM].
- PARTS ARE ROHS COMPLIANT.
- DIMS. SHOWN ARE FOR REFERENCE ONLY.

SYMBOLS DIMENSION UNITS SCALE CURRENT REV DESC: MIGRATION TO ECTR/NX GENERAL TOLERANCES (UNLESS SPECIFIED) EC NO: 620820 DRWN: ABENJAMINLW 2019/07/11 CHK'D: GROJAS01 2019/07/17 APPR: JMACNEIL 2019/08/06 INITIAL REVISION: DRWN: GZ 1985/04/05 APPR: JMACNEIL 2019/08/06 DRAFT WHERE APPLICABLE MUST REMAIN WITHIN DIMENSIONS THIRD ANGLE PROJECTION DRAWING SERIES C-SIZE 19098	THIS DRAWING CONTAINS INFORMATION THAT IS PROPRIETARY TO MOLEX ELECTRONIC TECHNOLOGIES, LLC AND SHOULD NOT BE USED WITHOUT WRITTEN PERMISSION		
	INCH/MM	NTS	
	4 PLACES ± --- ± ---	MM	INCH
	3 PLACES ± --- ± .005	2 PLACES ± 0.13 ± .01	1 PLACE ± 0.25 ± ---
ANGULAR TOL ± 0.5 °	molex SNAP SPADE SHORT TONGUE TERMINAL KRIMPTITE SERIES PRODUCT CUSTOMER DRAWING DOCUMENT NUMBER: 190980023 DOC TYPE: PSD DOC PART: 000 REVISION: A MATERIAL NUMBER: SEE TABLE CUSTOMER: GENERAL MARKET SHEET NUMBER: 1 OF 1		