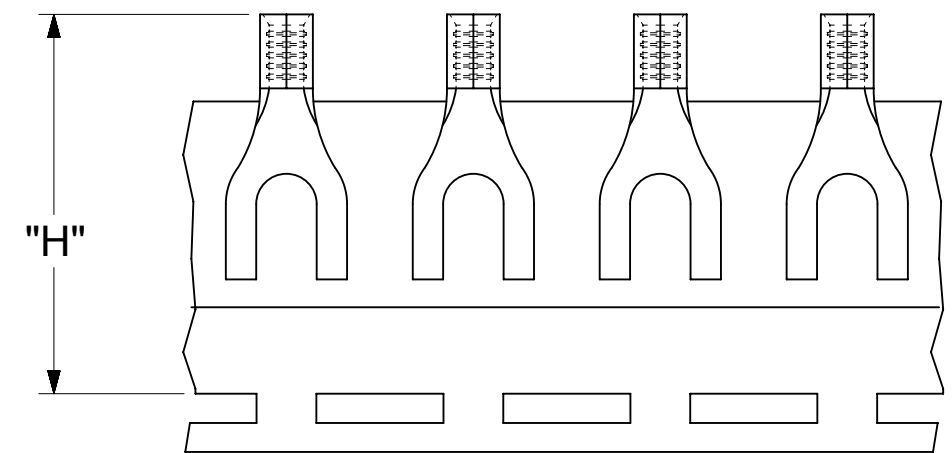
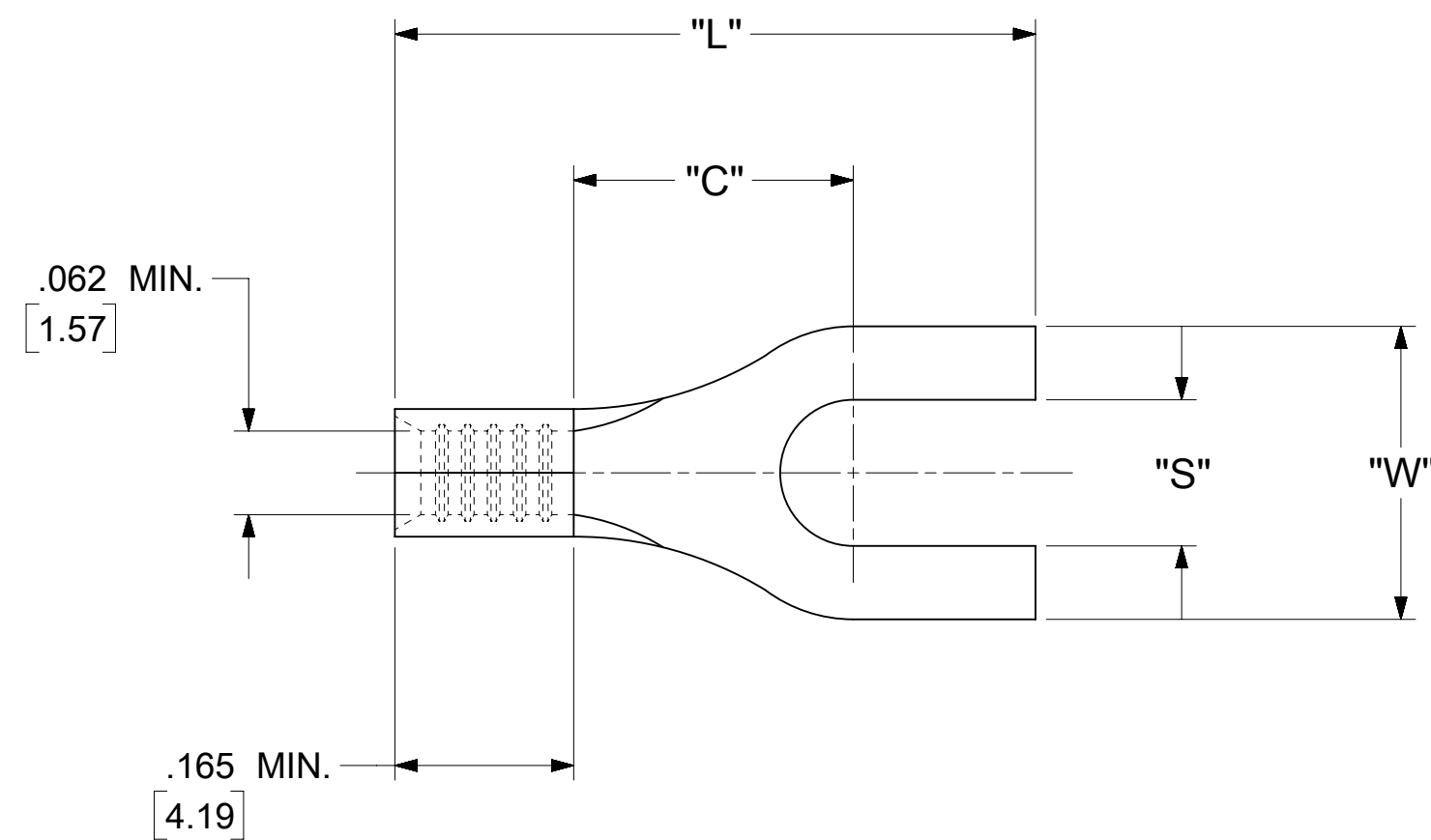


LOOSE PIECE		TAPE MOUNTED		SPECIFICATIONS					
MATERIAL NUMBER	ENGINEERING NUMBER	MATERIAL NUMBER	ENGINEERING NUMBER	STUD SIZE	"S" ±.005 [0.13]	"W" ±.010 [0.25]	"C" MIN.	"L" MAX.	"H"
191410020	AA-135-06	191410021	AA-135-06T	6	.146 [3.71]	.316 [8.03]	.303 [7.70]	.690 [17.53]	1.155 [29.34]
191410022	AA-135-08	191410023	AA-135-08T	8	.173 [4.39]				
191410024	AA-135-10	191410025	AA-135-10T	10	.198 [5.03]				



NOTES:

- MATERIAL: COPPER (STOCK THICKNESS $.028 \frac{+.001}{-.000}$ [0.71])
PLATING: ELECTRO-TIN (.0003 MIN).
- WIRE SIZE: 22 - 18 AWG
.25 - 1.5 MM²
- "UL" LISTING #E32244
"CSA" LISTING #18689
- ALL DIMENSIONS IN INCHES/[MM].
- PARTS ARE ROHS COMPLIANT.
- DIMS. SHOWN ARE FOR REFERENCE ONLY.

SYMBOLS	THIS DRAWING CONTAINS INFORMATION THAT IS PROPRIETARY TO MOLEX ELECTRONIC TECHNOLOGIES, LLC AND SHOULD NOT BE USED WITHOUT WRITTEN PERMISSION		CURRENT REV DESC:
	DIMENSION UNITS	SCALE	
$\nabla = 0$	INCH/MM	NTS	EC NO: 625846 DRWN: ABENJAMINLW 2019/09/12 CHK'D: GROJAS01 2019/10/17 APPR: JMACNEIL 2019/10/18 INITIAL REVISION: DRWN: KO 1984/10/17 APPR:
$\nabla = 0$	GENERAL TOLERANCES (UNLESS SPECIFIED)		
$\nabla = 0$		MM INCH	
$\nabla = 0$	4 PLACES	± --- ± ---	
$\nabla = 0$	3 PLACES	± --- ± 0.005	
$\nabla = 0$	2 PLACES	± 0.13 ± 0.01	
$\nabla = 0$	1 PLACE	± 0.25 ± ---	
$\nabla = 0$	0 PLACES	± --- ± ---	
$\nabla = 0$	ANGULAR TOL	± 0.5°	
$\nabla = 0$	DRAFT WHERE APPLICABLE MUST REMAIN WITHIN DIMENSIONS	THIRD ANGLE PROJECTION	DRAWING SERIES
$\nabla = 0$			C-SIZE 19141

molex		
SPADE TONGUE TERMINAL KRIMP TITE 100-SERIES		
PRODUCT CUSTOMER DRAWING		
DOCUMENT NUMBER	DOC TYPE	DOC PART REVISION
AACD10303	PSD	001 A
MATERIAL NUMBER	CUSTOMER	SHEET NUMBER
SEE TABLE	GENERAL MARKET	1 OF 1