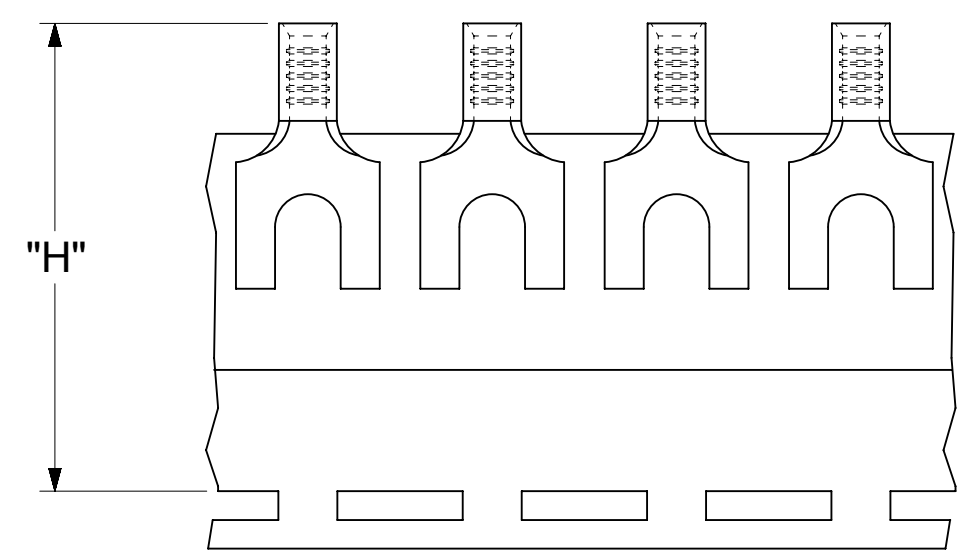
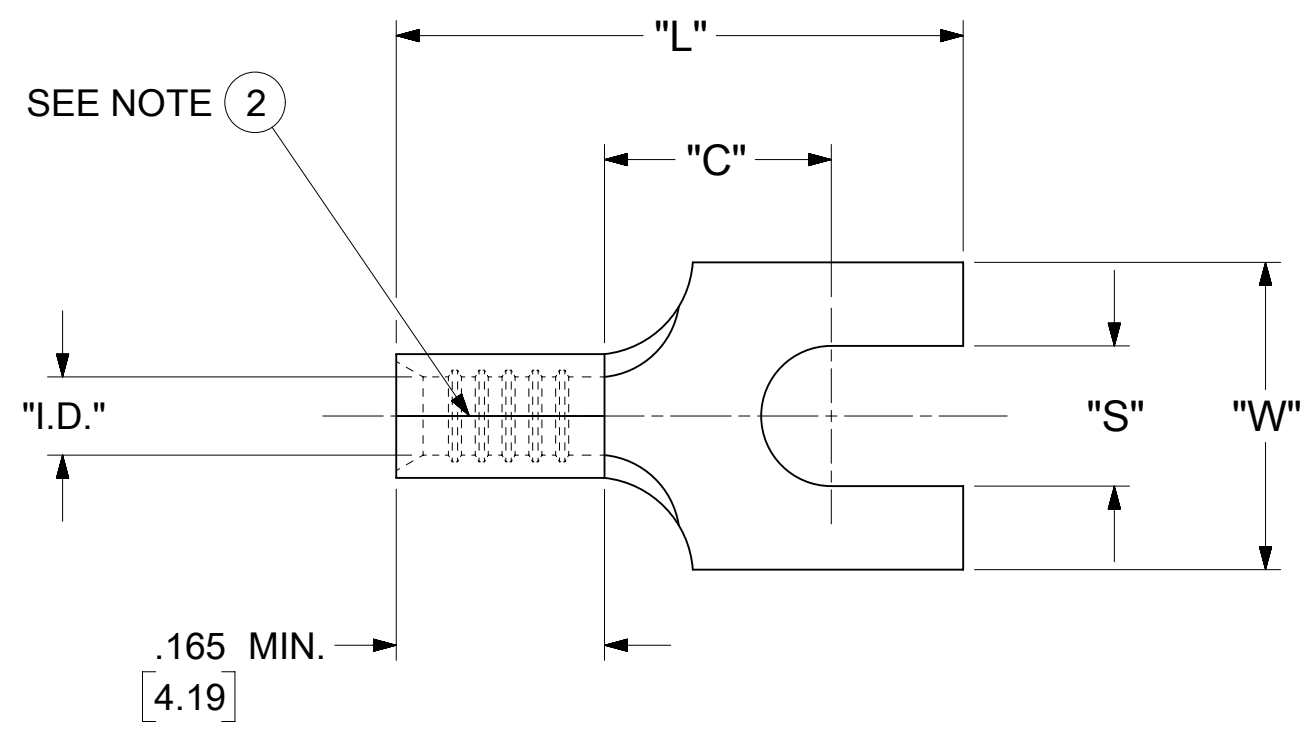


LOOSE PIECE		TAPE MOUNTED		SPECIFICATIONS								
MATERIAL NUMBER	ENGINEERING NUMBER	MATERIAL NUMBER	ENGINEERING NUMBER	STUD SIZE	"S" ±.005 [0.13]	"W" ±.010 [0.25]	"C" MIN.	"L" MAX.	"I.D." MIN.	"H"	STOCK THICKNESS	
191470006	AA-334-06	191470007	AA-334-06T	6	.146 [3.71]	.291 [7.39]	.207 [5.26]	.560 [14.22]	.062 [1.57]	1.155 [29.34]	.028 $\frac{+.001}{-.000}$ [0.71]	
191470010	AA-334-10	---	---	10	.198 [5.03]							
191470019	AA-338-06	191470020	AA-338-06T	6	.146 [3.71]	.245 [6.23]	.207 [5.26]	.560 [14.22]	.062 [1.57]	1.155 [29.34]	.028 $\frac{+.001}{-.000}$ [0.71]	



PARTS ON TAPE

- NOTES:
- MATERIAL: COPPER
PLATING: ELECTRO-TIN (.0003 MIN).
 - BRAZED SEAM.
 - WIRE SIZE: 22 - 18 AWG
.25 - 1.5 MM²
 - "UL" LISTING #E32244
"CSA" LISTING #18689
 - ALL DIMENSIONS IN INCHES/[MM].
 - PARTS ARE ROHS COMPLIANT.
 - DIMS. SHOWN ARE FOR REFERENCE ONLY.

SYMBOLS ▽ = 0 ▽ = 0 ▽ = 0 ▽ = 0 ▽ = 0 ▽ = 0 ▽ = 0 ▽ = 0 ▽ = 0 ▽ = 0 ▽ = 0	THIS DRAWING CONTAINS INFORMATION THAT IS PROPRIETARY TO MOLEX ELECTRONIC TECHNOLOGIES, LLC AND SHOULD NOT BE USED WITHOUT WRITTEN PERMISSION											
	DIMENSION UNITS		SCALE		CURRENT REV DESC:							
	INCH/MM		NTS		EC NO: 625848 DRWN: ABENJAMINLW 2019/09/12 CHK'D: GROJAS01 2019/10/17 APPR: JMACNEIL 2019/10/18 INITIAL REVISION: DRWN: JJ 1984/11/27 APPR:							
	GENERAL TOLERANCES (UNLESS SPECIFIED)										DOCUMENT NUMBER	
4 PLACES ± --- ± ---		MM INCH		AACD30301		PSD		001		A		
3 PLACES ± --- ± 0.005				MATERIAL NUMBER		CUSTOMER				SHEET NUMBER		
2 PLACES ± 0.13 ± 0.01				SEE TABLE		GENERAL MARKET				1 OF 1		
1 PLACE ± 0.25 ± ---												
0 PLACES ± --- ± ---												
ANGULAR TOL ± 0.5°												
DRAFT WHERE APPLICABLE MUST REMAIN WITHIN DIMENSIONS												