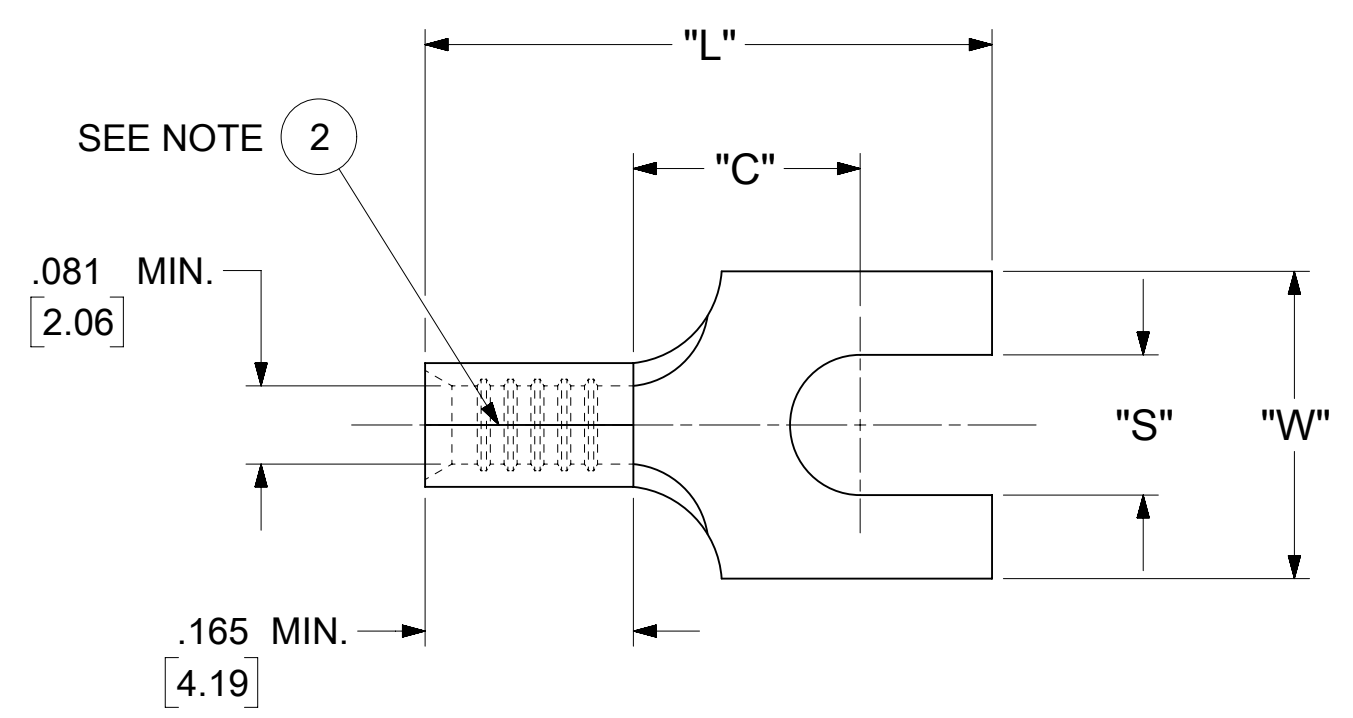


LOOSE PIECE		SPECIFICATIONS				
MATERIAL NUMBER	ENGINEERING NUMBER	STUD SIZE	"S" ±.005 [0.13]	"W" ±.010 [0.25]	"C" MIN.	"L" MAX.
191470056	BB-3471-04	4	.119 [3.02]	.245 [6.22]	.224 [5.69]	.551 [14.00]
191470057	BB-3471-06	6	.146 [3.71]			



- NOTES:
- MATERIAL: COPPER (STOCK THICKNESS .031±.001 [0.79])
PLATING: ELECTRO-TIN (.0003 MIN).
 - BRAZED SEAM.
 - WIRE SIZE: 16 - 14 AWG
1.0 - 2.5 MM²
 - "UL" LISTING #E32244
"CSA" LISTING #18689
 - ALL DIMENSIONS IN INCHES/[MM].
 - PARTS ARE ROHS COMPLIANT.
 - DIMS. SHOWN ARE FOR REFERENCE ONLY.

SYMBOLS	THIS DRAWING CONTAINS INFORMATION THAT IS PROPRIETARY TO MOLEX ELECTRONIC TECHNOLOGIES, LLC AND SHOULD NOT BE USED WITHOUT WRITTEN PERMISSION												
	DIMENSION UNITS		SCALE		CURRENT REV DESC:								
	INCH/MM		NTS										
	GENERAL TOLERANCES (UNLESS SPECIFIED)									SPADE TONGUE TERMINAL VERSAKRIMP 300-SERIES			
4 PLACES ± --- ± ---		MM INCH		EC NO: 626470					DOCUMENT NUMBER				
3 PLACES ± --- ± 0.005				DRWN: ABENJAMINLW 2019/09/17					DOC TYPE				
2 PLACES ± 0.13 ± 0.01				CHK'D: GROJAS01 2019/10/29					DOC PART				
1 PLACE ± 0.25 ± ---				APPR: JMACNEIL 2019/11/04					REVISION				
0 PLACES ± --- ± ---				INITIAL REVISION:					BBCD30301				
ANGULAR TOL ± 0.5°				DRWN: JJ 1984/10/27					PSD 001 A				
DRAFT WHERE APPLICABLE MUST REMAIN WITHIN DIMENSIONS		THIRD ANGLE PROJECTION		DRAWING		SERIES		MATERIAL NUMBER		CUSTOMER		SHEET NUMBER	
				C-SIZE		19147		SEE TABLE		GENERAL MARKET		1 OF 1	