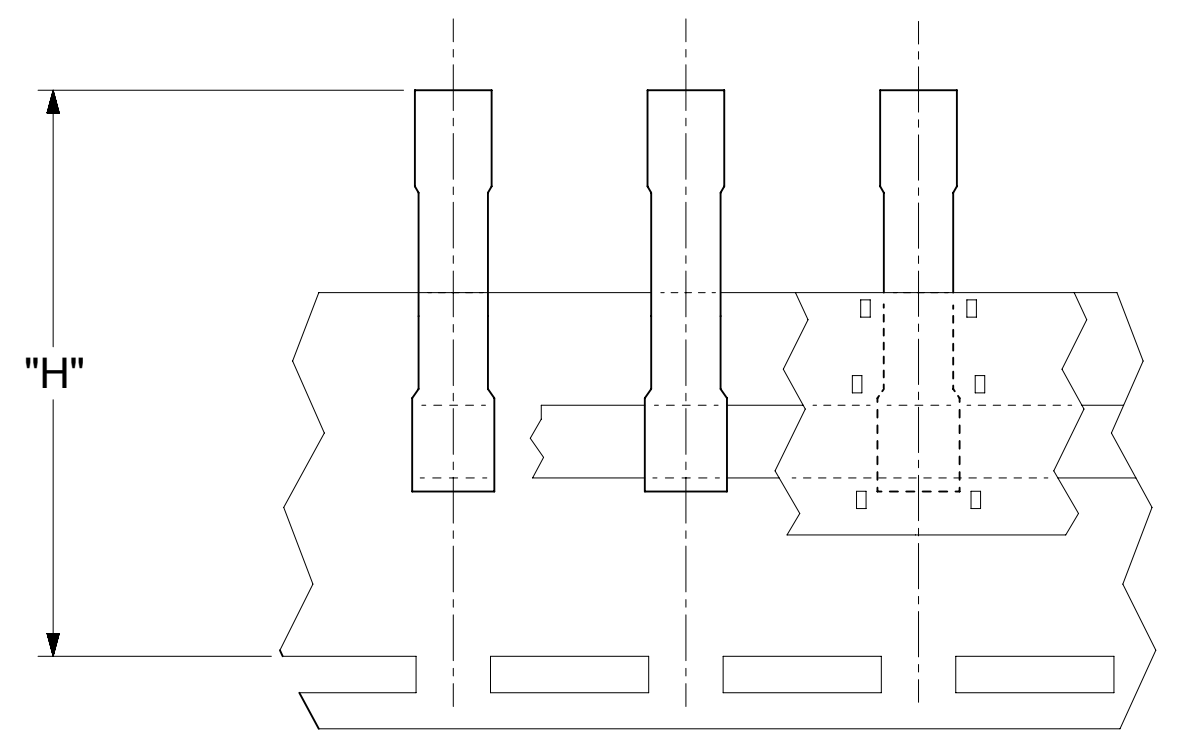
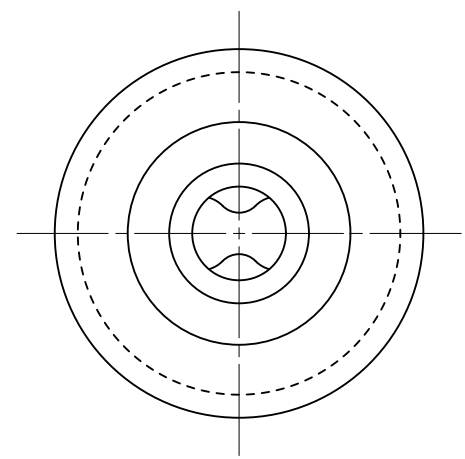
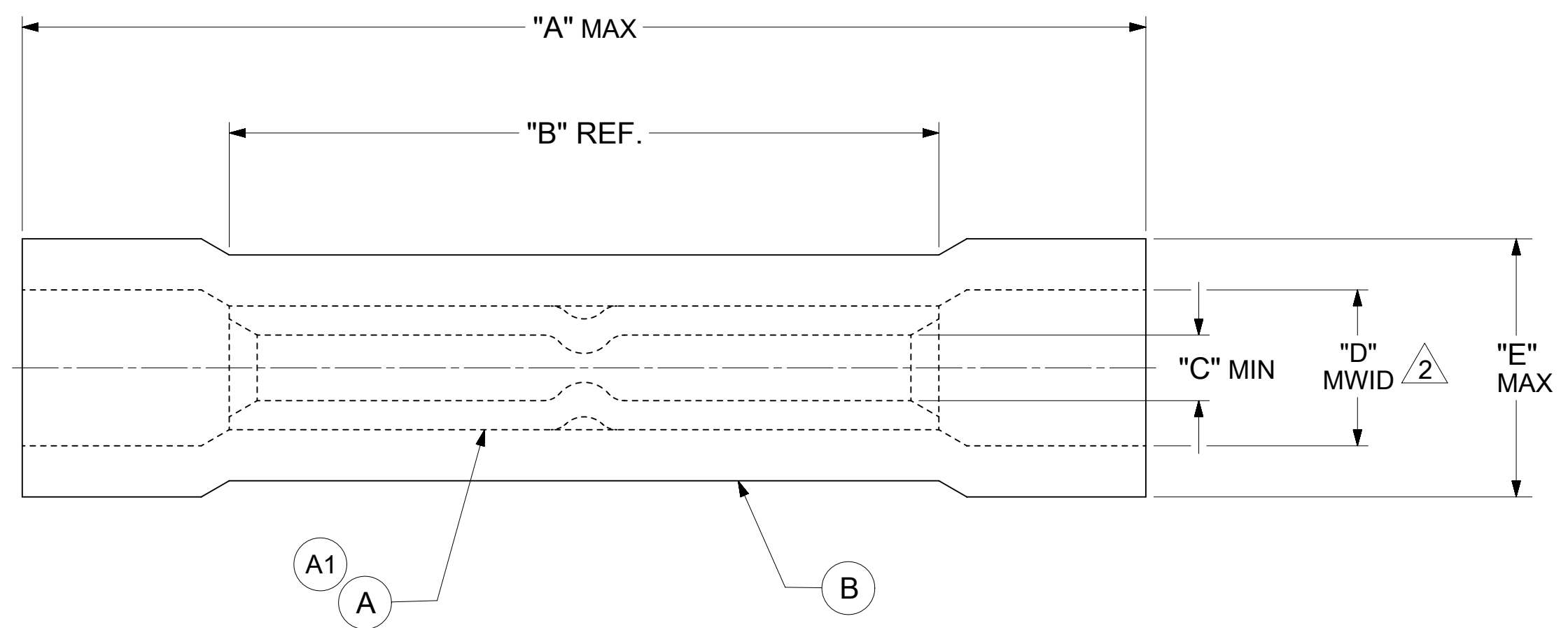


LOOSE PIECE		TAPE MOUNTED		DIMENSIONS						INSULATION COLOR	WIRE RANGE AWG
MATERIAL NUMBER	ENGINEERING NUMBER	MATERIAL NUMBER	ENGINEERING NUMBER	"A" MAX.	"B" REF.	"C" MIN.	"D" $\triangle 2$ MWID	"E" MAX.	"H" REF		
191540011	AS-V-345X	191540012	AS-V-345XT	1.045 [26.54]	.660 [16.76]	.061 [1.55]	$\triangle 2$ .170 [4.32]	.240 [6.10]	1.430 [36.32]	RED	22-18
191540023	BS-V-331X	191540024	BS-V-331XT	1.090 [27.69]	.660 [16.76]	$\triangle 2$ .091 [2.31]	$\triangle 2$ .195 [4.95]	.270 [6.86]	1.479 [37.57]	BLUE	16-14
191540037	CS-V-346X	191540038	CS-V-346XT	$\triangle 2$ 1.290 [32.77]	.815 [20.70]	$\triangle 2$ .140 [3.56]	$\triangle 2$ .280 [7.11]	.360 [9.14]	1.610 [40.89]	YELLOW	12-10



TAPE MOUNTED PARTS

- NOTES:
- MATERIAL:
    - (A). BUTT SPLICE CONNECTOR: COPPER TIN PLATED.
    - (B). INSULATION: COLOR CODED VINYL (SEE TABLE).
  - $\triangle 2$  MWID: MAXIMUM WIRE INSULATION DIAMETER.
  - ALL DIMENSIONS IN INCHES/[MM].
  - PARTS ARE ROHS COMPLIANT.
  - DIMS. SHOWN ARE FOR REFERENCE ONLY.

<b>SYMBOLS</b> $\triangle 2$ = 0 $\triangle 1$ = 0 $\triangle 0$ = 0 $\triangle 3$ = 0 $\triangle 4$ = 0 $\triangle 5$ = 0 $\triangle 6$ = 0 $\triangle 7$ = 0 $\triangle 8$ = 0 $\triangle 9$ = 0	THIS DRAWING CONTAINS INFORMATION THAT IS PROPRIETARY TO MOLEX ELECTRONIC TECHNOLOGIES, LLC AND SHOULD NOT BE USED WITHOUT WRITTEN PERMISSION		CURRENT REV DESC:		 INSULKRIMP BUTT CONNECTOR PRODUCT CUSTOMER DRAWING	
	DIMENSION UNITS: INCH/MM SCALE: NTS		EC NO: 626844 DRWN: DMYRICK 2019/11/04 CHK'D: GROJAS01 2019/11/07 APPR: GROJAS01 2019/11/07			DOCUMENT NUMBER: 191540011 DOC TYPE: PSD DOC PART: 000 REVISION: A1
	GENERAL TOLERANCES (UNLESS SPECIFIED) 4 PLACES $\pm$ --- $\pm$ --- 3 PLACES $\pm$ --- $\pm$ .005 2 PLACES $\pm$ 0.13 $\pm$ .01 1 PLACE $\pm$ 0.25 $\pm$ --- 0 PLACES $\pm$ --- $\pm$ ---		INITIAL REVISION: DRWN: EIIIF 1987/04/29 APPR: JMACNEIL 2019/08/05			MATERIAL NUMBER: SEE TABLE CUSTOMER: GENERAL MARKET SHEET NUMBER: 1 OF 1
	DRAFT WHERE APPLICABLE MUST REMAIN WITHIN DIMENSIONS		THIRD ANGLE PROJECTION	DRAWING: C-SIZE		SERIES: 19154