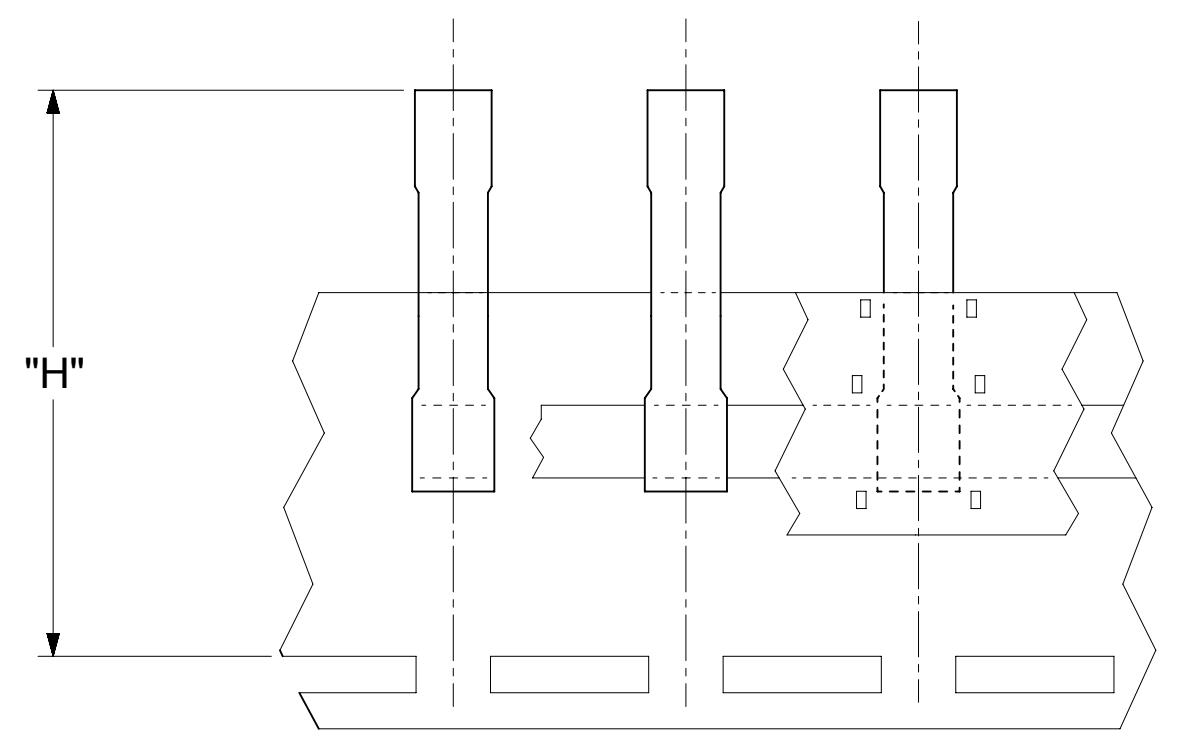
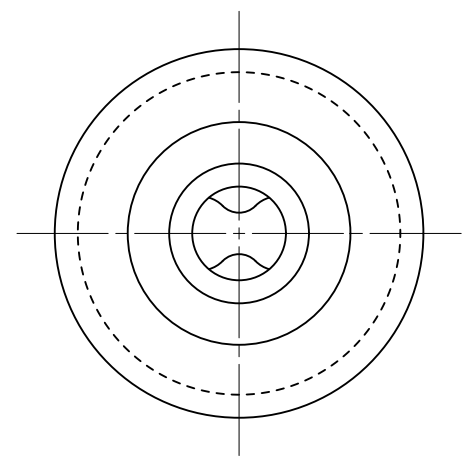
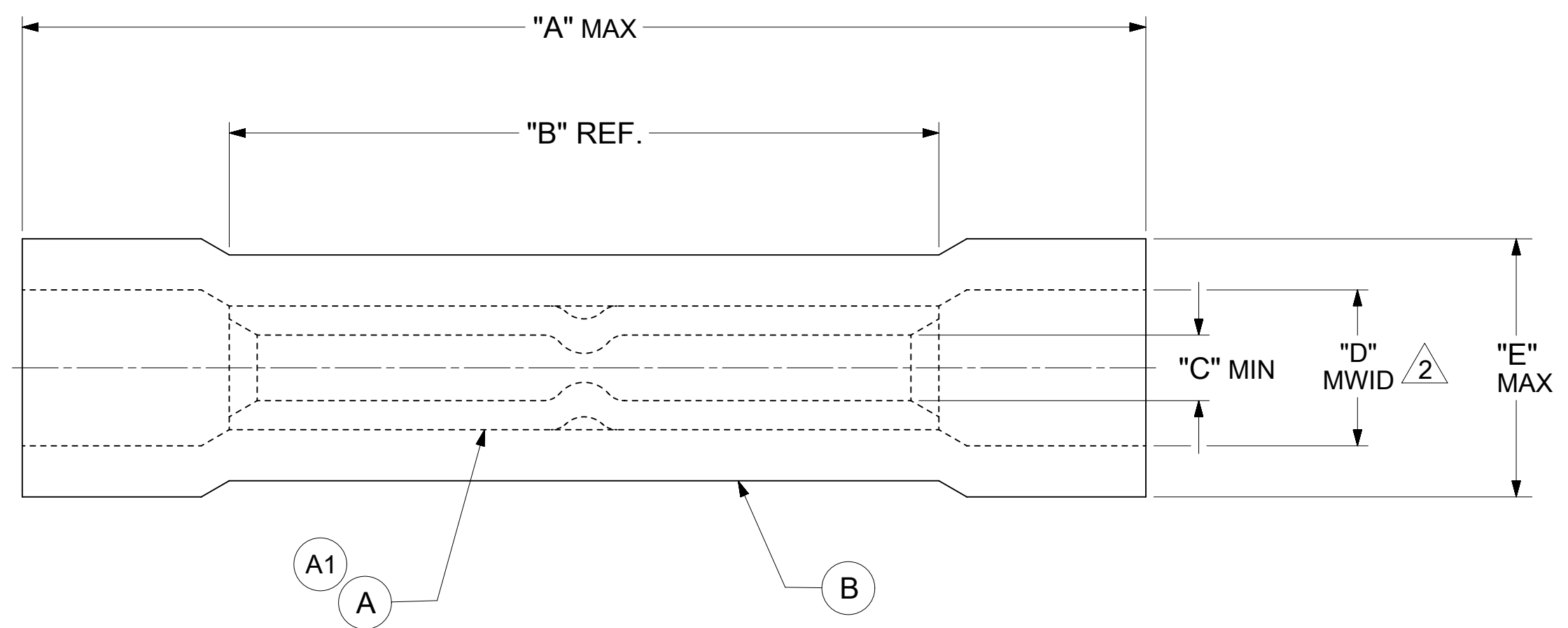


LOOSE PIECE		TAPE MOUNTED		DIMENSIONS						INSULATION COLOR	WIRE RANGE AWG
MATERIAL NUMBER	ENGINEERING NUMBER	MATERIAL NUMBER	ENGINEERING NUMBER	"A" MAX.	"B" REF.	"C" MIN.	"D" $\triangle 2$ MWID	"E" MAX.	"H" REF		
191540011	AS-V-345X	191540012	AS-V-345XT	1.045 [26.54]	.660 [16.76]	.061 [1.55]	$\triangle 2$ .170 [4.32]	.240 [6.10]	1.430 [36.32]	RED	22-18
191540023	BS-V-331X	191540024	BS-V-331XT	1.090 [27.69]	.660 [16.76]	$\triangle 2$ .091 [2.31]	$\triangle 2$ .195 [4.95]	.270 [6.86]	1.479 [37.57]	BLUE	16-14
191540037	CS-V-346X	191540038	CS-V-346XT	$\triangle 2$ 1.290 [32.77]	.815 [20.70]	$\triangle 2$ .140 [3.56]	$\triangle 2$ .280 [7.11]	.360 [9.14]	1.610 [40.89]	YELLOW	12-10



TAPE MOUNTED PARTS

- NOTES:
- MATERIAL:
    - (A). BUTT SPLICE CONNECTOR: COPPER TIN PLATED.
    - (B). INSULATION: COLOR CODED VINYL (SEE TABLE).
  - $\triangle 2$  MWID: MAXIMUM WIRE INSULATION DIAMETER.
  - ALL DIMENSIONS IN INCHES/[MM].
  - PARTS ARE ROHS COMPLIANT.
  - DIMS. SHOWN ARE FOR REFERENCE ONLY.

THIS DRAWING CONTAINS INFORMATION THAT IS PROPRIETARY TO MOLEX ELECTRONIC TECHNOLOGIES, LLC AND SHOULD NOT BE USED WITHOUT WRITTEN PERMISSION									
SYMBOLS		DIMENSION UNITS		SCALE		CURRENT REV DESC:			
$\triangle 2$	= 0	INCH/MM		NTS		<b>molex</b> INSULKRIMP BUTT CONNECTOR PRODUCT CUSTOMER DRAWING EC NO: 626844 DRWN: DMYRICK 2019/11/04 CHK'D: GROJAS01 2019/11/07 APPR: GROJAS01 2019/11/07 INITIAL REVISION: DRWN: EIIIF 1987/04/29 APPR: JMACNEIL 2019/08/05			
$\nabla$	= 0	GENERAL TOLERANCES (UNLESS SPECIFIED)							
$\nabla$	= 0		MM	INCH					
$\nabla$	= 0	4 PLACES	± ---	± ---					
$\nabla$	= 0	3 PLACES	± ---	± .005					
$\nabla$	= 0	2 PLACES	± 0.13	± .01					
$\nabla$	= 0	1 PLACE	± 0.25	± ---					
$\nabla$	= 0	0 PLACES	± ---	± ---					
$\nabla$	= 0	ANGULAR TOL ± 0.5 °				THIRD ANGLE PROJECTION DRAWING SERIES <b>C-SIZE 19154</b>			
DRAFT WHERE APPLICABLE MUST REMAIN WITHIN DIMENSIONS		MATERIAL NUMBER		CUSTOMER		SHEET NUMBER			
		SEE TABLE		GENERAL MARKET		1 OF 1			

