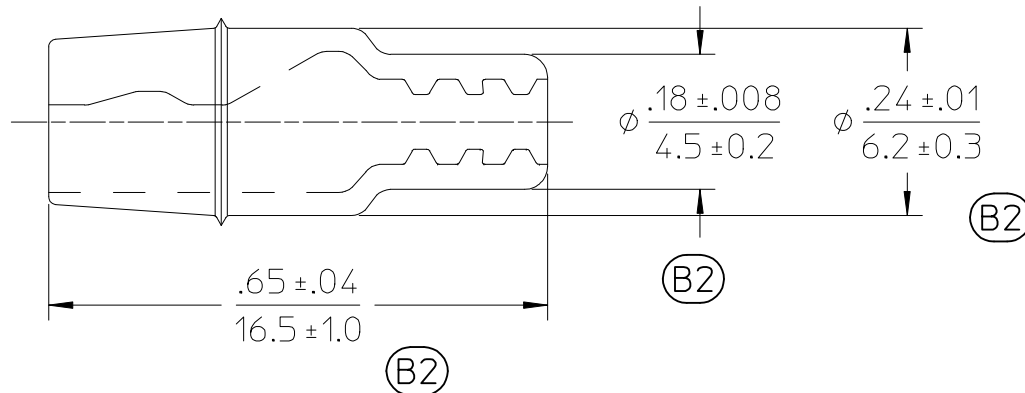
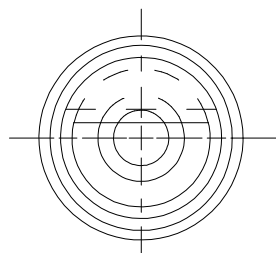


METERIAL NUMBER	ENGINEERING NUMBER	COLOR
191610333	SPP-1	SEMI-TRASPARENT TEAL
191610669	SPP-1-CL	TRASPARENT CLEAR



- NOTES:
1. MATERIAL: PVC
 2. COLOR: SEE CHART.
 3. PARTS ARE ROHS COMPLIANT.

ORIGINALLY DRAWN
BY JH 2000/05/19

UPDATE DIM TOL EC NO: IPG2016-1554 DRWN: GROJAS01 2016/05/24 CHKD: APPR: JMACNEIL 2016/05/31	QUALITY SYMBOLS 	GENERAL TOLERANCES (UNLESS SPECIFIED)		DIMENSION STYLE IN/MM		SCALE 4:1	DESIGN UNITS INCH	THIRD ANGLE PROJECTION		
		4 PLACES	± ---	± ---	DRAWN BY GROJAS01	DATE 2014/12/22	TITLE SPLASH PROOF INSULATOR SNAP PLUG & RECEPTACLE			
		3 PLACES	± ---	± .005	CHECKED BY JMACNEIL	DATE 2014/12/22				
		2 PLACES	± 0.25	± .01	APPROVED BY		DATE			
1 PLACE	± 0.13	± ---	MATERIAL NO. SEE CHART		DATE	DOCUMENT NO. SD-19161-024	SHEET NO. 1 OF 1			
B2	REV	ANGULAR ± 1/2°		SIZE A		THIS DRAWING CONTAINS INFORMATION THAT IS PROPRIETARY TO MOLEX INCORPORATED AND SHOULD NOT BE USED WITHOUT WRITTEN PERMISSION				
DRAFT WHERE APPLICABLE MUST REMAIN WITHIN DIMENSIONS										