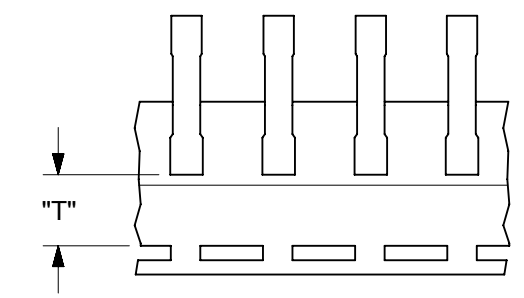
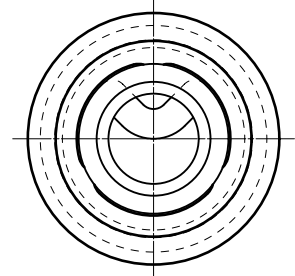
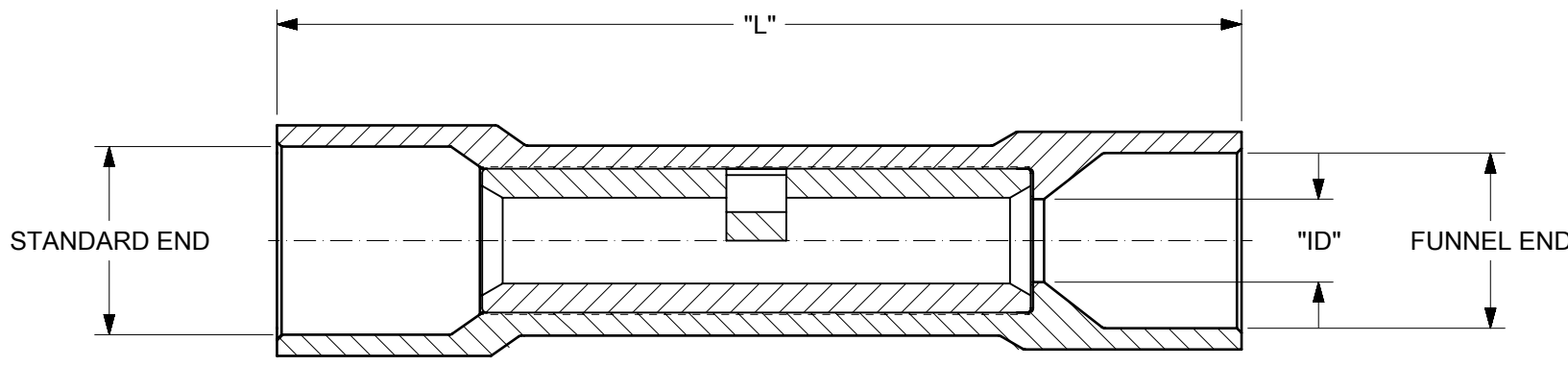


MATERIAL NUMBER	ALTERNATE NUMBER	WIRE SIZE AWG	INSULATION COLOR	CONNECTOR ID	MAX. WIRE INSUL. DIA.		LENGTH "L"	TAPE HEIGHT "T"	DESCRIPTION
					STANDARD END	FUNNEL END			
192020010	AS-932	22-18	LIGHT RED	.061 (1.55)	.161 (4.09)	.147 (3.73)	1.07 (27.18)	----	LOOSE PIECE
192020011	AS-932-DK	22-18	DARK RED	.061 (1.55)	.161 (4.09)	.147 (3.73)	1.07 (27.18)	----	LOOSE PIECE
192020012	AS-932-DKT	22-18	DARK RED	.061 (1.55)	.161 (4.09)	.147 (3.73)	1.07 (27.18)	.480 (12.19)	TAPE MOUNTED
192020026	BS-942	16-14	LIGHT BLUE	.087 (2.21)	.199 (5.05)	.185 (4.70)	1.07 (27.18)	----	LOOSE PIECE
192020030	BS-942T	16-14	LIGHT BLUE	.087 (2.21)	.199 (5.05)	.185 (4.70)	1.07 (27.18)	.480 (12.19)	TAPE MOUNTED
192020027	BS-942-DK	16-14	DARK BLUE	.087 (2.21)	.199 (5.05)	.185 (4.70)	1.07 (27.18)	----	LOOSE PIECE
192020029	BS-942-DKT	16-14	DARK BLUE	.087 (2.21)	.199 (5.05)	.185 (4.70)	1.07 (27.18)	.480 (12.19)	TAPE MOUNTED
192020028	BS-942-DKBT	16-14	DARK BLUE	.087 (2.21)	.199 (5.05)	.185 (4.70)	1.07 (27.18)	.480 (12.19)	TAPE MOUNTED LARGE REEL
192020131	BS-942-B	16-14	BLUE	.087 (2.21)	.199 (5.05)	.185 (4.70)	1.07 (27.18)	----	LOOSE PIECE
192020130	BS-942-BBT	16-14	BLUE	.087 (2.21)	.199 (5.05)	.185 (4.70)	1.07 (27.18)	.480 (12.19)	TAPE MOUNTED LARGE REEL
192020045	CS-952	12-10	YELLOW	.138 (3.51)	.276 (7.01)	.262 (6.65)	1.15 (29.21)	----	LOOSE PIECE
192020046	CS-952-DK	12-10	DARK YELLOW	.138 (3.51)	.276 (7.01)	.262 (6.65)	1.15 (29.21)	----	LOOSE PIECE
192020047	CS-952-DKT	12-10	DARK YELLOW	.138 (3.51)	.276 (7.01)	.262 (6.65)	1.15 (29.21)	.440 (11.18)	TAPE MOUNTED
192020048	CS-952-DKBT	12-10	DARK YELLOW	.138 (3.51)	.276 (7.01)	.262 (6.65)	1.15 (29.21)	.440 (11.18)	TAPE MOUNTED LARGE REEL
192020141	CS-952 BULK	12-10	YELLOW	.138 (3.51)	.276 (7.01)	.262 (6.65)	1.15 (29.21)	----	BULK PACKED, 2500 PER PACKAGE
192020142	CS-952 -DK BULK	12-10	DARK YELLOW	.138 (3.51)	.276 (7.01)	.262 (6.65)	1.15 (29.21)	----	BULK PACKED, 2500 PER PACKAGE



PARTS ON TAPE

- NOTE(S):
1. MATERIAL: COPPER
 2. PLATING: ELECTRO-TIN
 3. INSULATION: 6/6 NYLON
 4. PARTS ARE ROHS COMPLIANT.

THIS DRAWING CONTAINS INFORMATION THAT IS PROPRIETARY TO MOLEX ELECTRONIC TECHNOLOGIES, LLC AND SHOULD NOT BE USED WITHOUT WRITTEN PERMISSION												
SYMBOLS	DIMENSION UNITS		SCALE		CURRENT REV DESC: MIGRATE TO NX & UPDATE VIEW							
	IN/MM		NTS									
▽ = 0 ▽ = 0 ▽ = 0 ▽ = 0 ▽ = 0 ▽ = 0 ▽ = 0 ▽ = 0 ▽ = 0	GENERAL TOLERANCES (UNLESS SPECIFIED)				EC NO: 629174							
	4 PLACES ±		MM		INCH		DRWN: DMYRICK 2019/12/04			molex FUNNEL ENTRY SEAMLESS INSULKRIMP BUTT CONNECTOR		
	3 PLACES ±		± 0.005		CHK'D: DMYRICK 2019/12/17							
	2 PLACES ±		± 0.13 ± 0.01		APPR: GROJAS01 2019/12/18							
	1 PLACE ±		± 0.25 ±		INITIAL REVISION:			PRODUCT CUSTOMER DRAWING				
0 PLACES ±		±		DRWN: HBEITZEL 2000/07/18			DOCUMENT NUMBER		DOC TYPE	DOC PART	REVISION	
ANGULAR TOL ± 0.5°		THIRD ANGLE PROJECTION			DRAWING		SERIES		MATERIAL NUMBER		CUSTOMER	SHEET NUMBER
DRAFT WHERE APPLICABLE MUST REMAIN WITHIN DIMENSIONS				B-SIZE		19202		SEE CHART		GENERAL MARKET		1 OF 1