

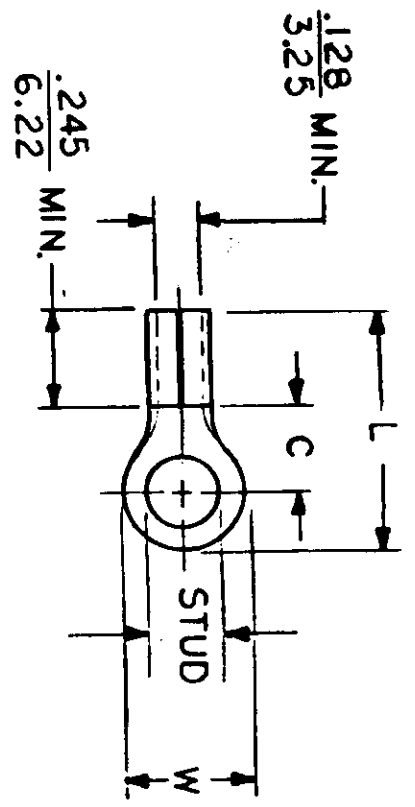
**NOTES:**

① MAT'L: PURE NICKEL  
PLATING: NONE

STUD SIZES: (+.005)

- 02 = .094 209 = .209
- 04 = .119 413 = .413
- 06 = .146
- 08 = .173
- 10 = .198
- 14 = .265
- 56 = .328
- 38 = .390

ALL DIMENSIONS = INCHES  
M M

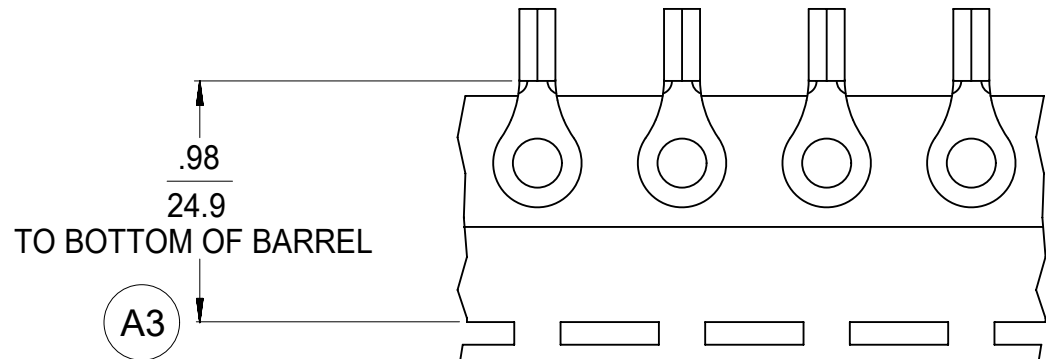
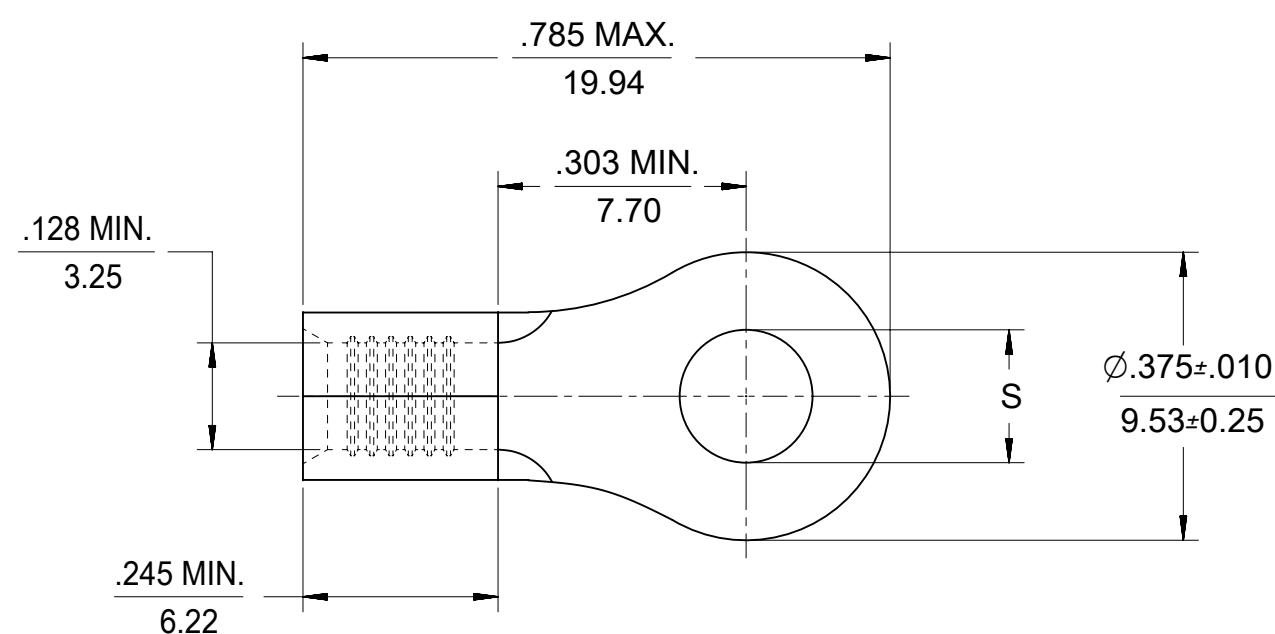


FILE NO. C-CD-101-04

WIRE SIZE: 12-10 AWG  
40-6.0 MM<sup>2</sup>

PART NUMBER	"W"	"C" MIN.	"L" MAX.	SCALE:	NTS	DATE	TITLE: TEMP-TERM (1200°)	AVAILABLE STUD SIZES	DWG. NO.						
									FRAC.	DEC.	ANG.	A	CUSTOMER DWG.		
	±.010														
<del>135</del>	$\frac{.750}{19.05}$	$\frac{.611}{15.52}$	$\frac{1.280}{32.51}$					14, 56, 38, 76, 12							
C-U-128-	$\frac{.375}{9.53}$	$\frac{.303}{7.70}$	$\frac{.785}{19.94}$					04, 06, 08, 10, 209							
C-U-130-	$\frac{.530}{13.46}$	$\frac{.393}{9.98}$	$\frac{.952}{24.18}$					10, 14, 56, 38							
<del>135</del>	$\frac{.282}{7.16}$	$\frac{.306}{7.77}$	$\frac{.741}{18.82}$					04, 06, 08							
C-U-140-	$\frac{.592}{15.04}$	$\frac{.468}{11.89}$	$\frac{1.056}{26.82}$					10, 14, 56, 38, 209, 413							
DIMENSIONAL TOLERANCES UNLESS OTHERWISE SPECIFIED								REFERENCE	SCALE:	NTS	DATE	TITLE: TEMP-TERM (1200°)			
FRAC.								DEC.	ANG.						
±								±	±						
DRAWN. BY: ELLIF								CHKD. BY:	APPRD. BY:						
2-3-87															
TERMINAL RING TONGUE								KrimpTite 100-SERIES							
EIC mox								INCORPORATED							

MAT'L NO. (LOOSE PIECE)	ENG. NO.	MAT'L NO. (TAPE MOUNTED)	ENG. NO.	STUD SIZE	"S" ±.005 (0.13)	STOCK THICKNESS	FINISH
190690200	C-128-04	190690147	C-128-04T	4	.126 (3.20)	COPPER .040 (1.02)	SEE NOTE 1
190690202	C-128-06	-----	-----	6	.146 (3.71)		
190690205	C-128-08	190690208	C-128-08T	8	.173 (4.39)		
190690209	C-128-10	190690212	C-128-10T	10	.198 (5.03)		
190690215	C-128-209	-----	-----	209	.209 (5.18)	NICKEL .038 (0.97)	NONE
192030159	C-U-128-06	-----	-----	6	.146 (3.71)		
192030160	C-U-128-08	-----	-----	8	.173 (4.39)		
192030113	C-U-128-10	192030114	C-U-128-10T	10	.198 (5.03)		
190690682	C-128-10-AU	-----	-----	10	.198 (5.03)	COPPER .040 (1.02)	SEE NOTE 2



- NOTES:
1. FINISH: TIN PLATING, 100(2.5)µin(µm) MIN
  2. FINISH: GOLD, 50(1.25)µin(µm) MIN. OVER NICKEL, 50(1.25)µin(µm) MIN. PLATING.
  3. WIRE SIZE: 12-10 AWG, 4.0-6.0 MM<sup>2</sup>
  3. PARTS ARE RoHS COMPLIANT.

SYMBOLS										THIS DRAWING CONTAINS INFORMATION THAT IS PROPRIETARY TO MOLEX ELECTRONIC TECHNOLOGIES, LLC AND SHOULD NOT BE USED WITHOUT WRITTEN PERMISSION																													
DIMENSION UNITS					SCALE					CURRENT REV DESC:																													
INCH/MM					1:1					EC NO: 626861																													
GENERAL TOLERANCES (UNLESS SPECIFIED)										DRWN: DMYRICK 2019/11/05																													
4 PLACES ±					MM					INCH					CHK'D: JMACNEIL 2019/11/06																								
3 PLACES ±					2 PLACES ±					1 PLACE ±					0 PLACES ±					APPR: JMACNEIL 2019/11/06																			
ANGULAR TOL ± °										INITIAL REVISION:																													
DRAFT WHERE APPLICABLE MUST REMAIN WITHIN DIMENSIONS										THIRD ANGLE PROJECTION																													
DRAWING					SERIES					MATERIAL NUMBER					CUSTOMER																								
B-SIZE					19069					SD-19069-020					GENERAL MARKET																								
DOCUMENT NUMBER										DOC TYPE										DOC PART										REVISION									
A3										PSD										001										A3									
SHEET NUMBER										1 OF 1																													