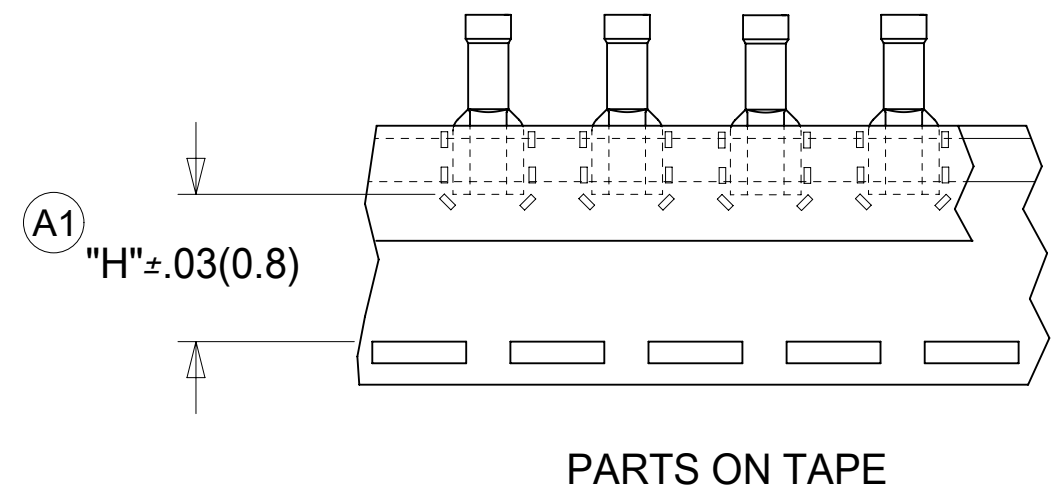
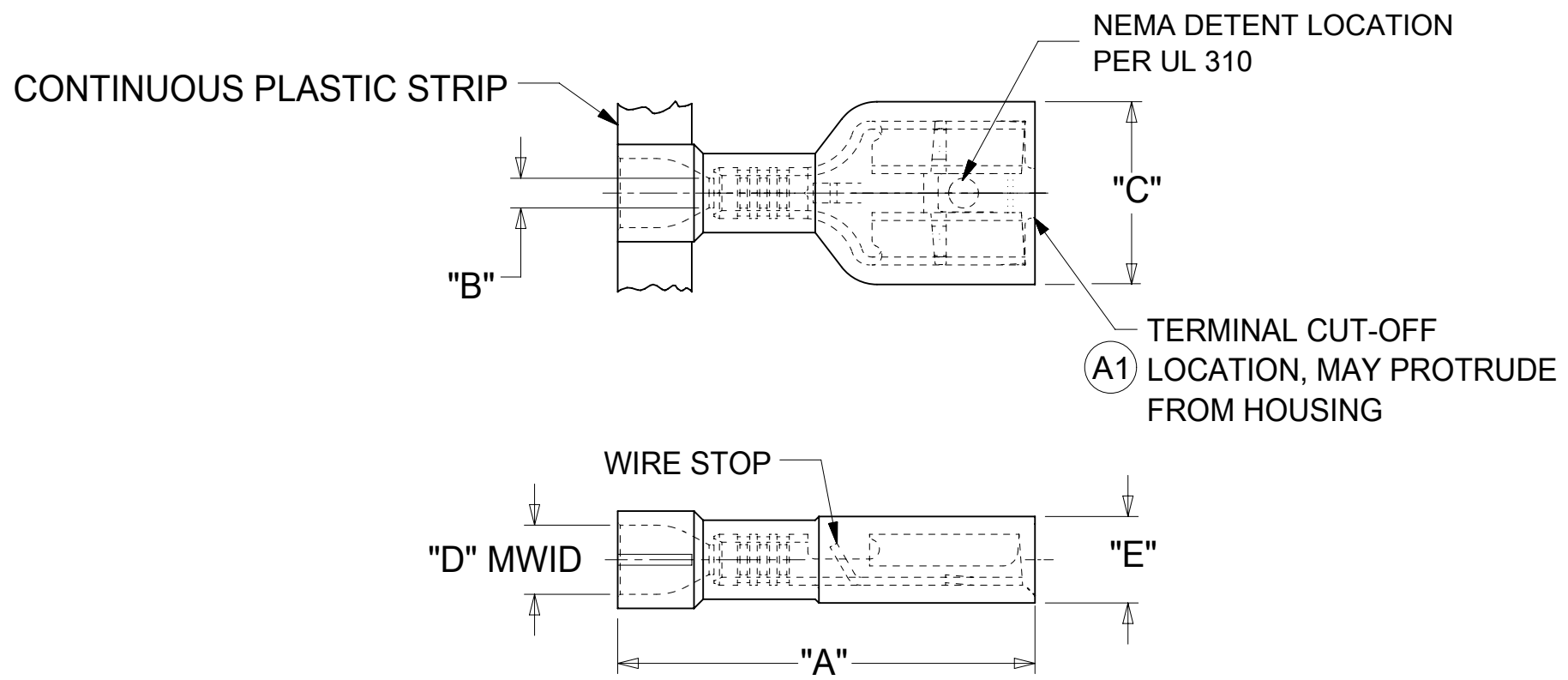


10	9	8	7	6	5	4	3	2	1						
LOOSE PIECE MATERIAL NUMBER	LOOSE PIECE ENGRNG NUMBER	CONTINUOUS STRIP MATERIAL NUMBER	CONTINUOUS STRIP ENGRNG NUMBER	MYLAR TAPE MATERIAL NUMBER	MYLAR TAPE ENGRNG NUMBER	WIRE RANGE AWG	FITS MALE TAB SIZE	HOUSING COLOR	STOCK THICK	"A" MAX.	"B" MIN.	"C" MAX.	"D" MWID	"E" MAX.	"H" NOMINAL
192760002	AA-2201-LIF	192760001	AA-2201C-LIF	192760003	AA-2201T-LIF	22-18	.250x.032 (6.35x0.81)	RED	.016/0.41	.86 /21.8	.058 /1.47	.38 /9.7	.135 /3.43	.18 /4.6	.56 /14.2
192760005	BB-2206-LIF	192760004	BB-2206C-LIF	192760006	BB-2206T-LIF	16-14	.250x.032 (6.35x0.81)	BLUE	.016/0.41	.86 /21.8	.083 /2.10	.38 /9.7	.160/4.06	.18 /4.6	.56 /14.2
192760008	C-2293-LIF	192760007	C-2293C-LIF	192760009	C-2293T-LIF	12-10	.250x.032 (6.35x0.81)	YELLOW	.018/0.46	1.03 /26.1	.117/2.97	.38 /9.7	.235 /5.97	.22 /5.6	.51 /12.9



- NOTES:
- MATERIALS:  
 TERMINAL: MATTE-TIN PLATED BRASS  
 INSULATION: NYLON 6/6 94V-2,  
 SEE CHART FOR COLORS
  - PRODUCT SPECIFICATION: PS-19902-012
  - MWID = MAXIMUM WIRE INSULATION DIAMETER
  - PARTS ARE RoHS COMPLIANT

SYMBOLS		THIS DRAWING CONTAINS INFORMATION THAT IS PROPRIETARY TO MOLEX ELECTRONIC TECHNOLOGIES, LLC AND SHOULD NOT BE USED WITHOUT WRITTEN PERMISSION	
DIMENSION UNITS	SCALE	CURRENT REV DESC: ADD CUT-OFF NOTE	
$\nabla = 0$	IN/MM	NTS	
$\nabla = 0$	GENERAL TOLERANCES (UNLESS SPECIFIED)		
$\nabla = 0$		MM	INCH
$\nabla = 0$	4 PLACES	±	±
$\nabla = 0$	3 PLACES	±	± 0.005
$\nabla = 0$	2 PLACES	± 0.13	± 0.01
$\nabla = 0$	1 PLACE	± 0.25	± 0.02
$\nabla = 0$	0 PLACES	±	±
$\nabla = 0$	ANGULAR TOL	± 0.5°	
$\nabla = 0$	DRAFT WHERE APPLICABLE MUST REMAIN WITHIN DIMENSIONS		THIRD ANGLE PROJECTION
		DRAWING	SERIES
		B-SIZE	19276
		MATERIAL NUMBER	CUSTOMER
		SEE CHART	GENERAL MARKET
		DOCUMENT NUMBER	DOC TYPE   DOC PART   REVISION
		SD-19276-001	PSD   001   A1
		EC NO: 607062	DRWN: DMYRICK 2018/11/01
		CHK'D: JMACNEIL	2018/11/02
		APPR: JMACNEIL	2018/11/02
		INITIAL REVISION:	
		DRWN: ETHRODAHL	2010/03/18
		APPR: JMACNEIL	2011/01/06
		SHEET NUMBER	1 OF 1