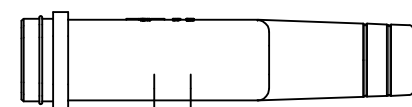
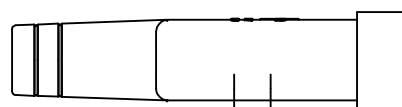
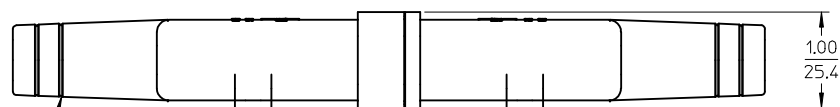


ASSEMBLED VIEWS



194260002
FEMALE BOOT

194260001
MALE BOOT

4X GROOVE PROVIDED AS CUT OFF GUIDE FOR USER WHEN USING THICK INSULATION TYPE CABLE.

- NOTES:
1. MATERIAL: THERMOPLASTIC ELASTOMER. COLOR: BLACK. UV RESISTANCE: UL "F1".
 2. PARTS ARE PACKAGED 15 EACH PER CARTON.

EC NO: ETC2004-0130 DRWN:DMYRICK 2004/01/21 CHKD:JPWLICK 2004/01/21 APPR:RDEROSS 2004/01/21	QUALITY SYMBOLS	GENERAL TOLERANCES (UNLESS SPECIFIED)		SCALE 1:1	DESIGN UNITS INCH	THIRD ANGLE PROJECTION	REVISE ON CAD ONLY
	▽ = 0 ∇ = 0		mm	INCH	DIMENSION STYLE IN/MM		TITLE
		4 PLACES	± ---	± ---			WEATHERTIGHT MALE/FEMALE BOOT, 16-12 AWG, SC POWER CONNECTOR
		3 PLACES	± ---	± ---			
	2 PLACES	± ---	± .025	DRAWN BY DMYRICK	DATE 04/01/06	MOLEX INCORPORATED	
	1 PLACE	± 0.64	± ---	CHECKED BY JPWLICK	DATE 04/01/06		
		ANGULAR ± 2 °		APPROVED BY RDEROSS	DATE 04/01/06	MATERIAL NO. SEE DRAWING SD-19426-001	DOCUMENT NO. SD-19426-001
		DRAFT WHERE APPLICABLE MUST REMAIN WITHIN DIMENSIONS		THIS DRAWING CONTAINS INFORMATION THAT IS PROPRIETARY TO MOLEX INCORPORATED AND SHOULD NOT BE USED WITHOUT WRITTEN PERMISSION		SHEET NO. 1 OF 1	