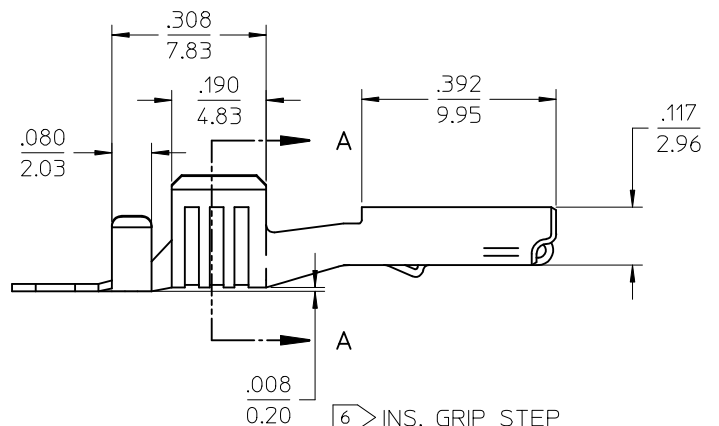
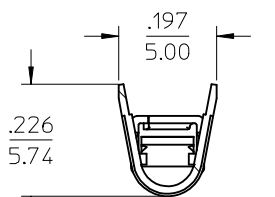
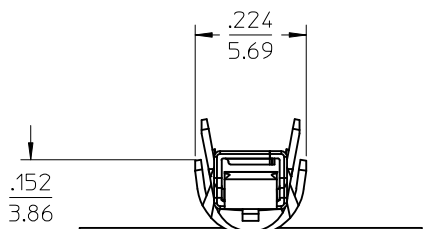
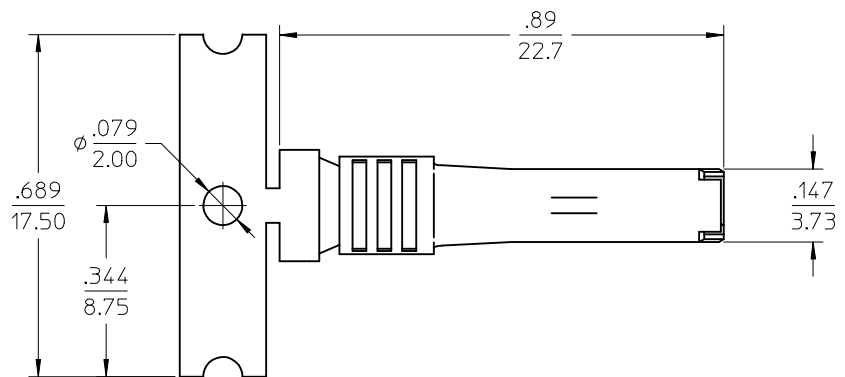
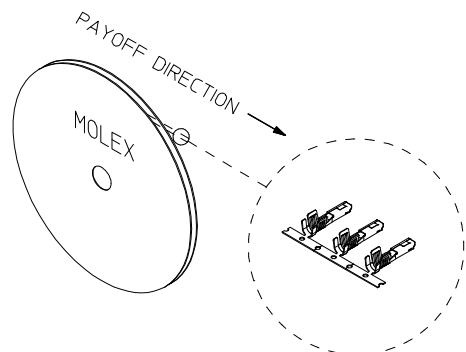
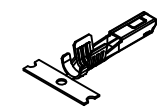


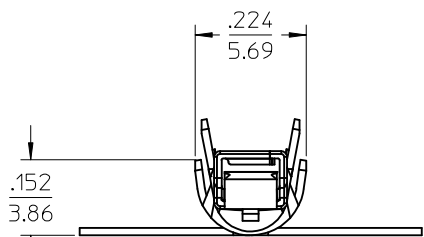
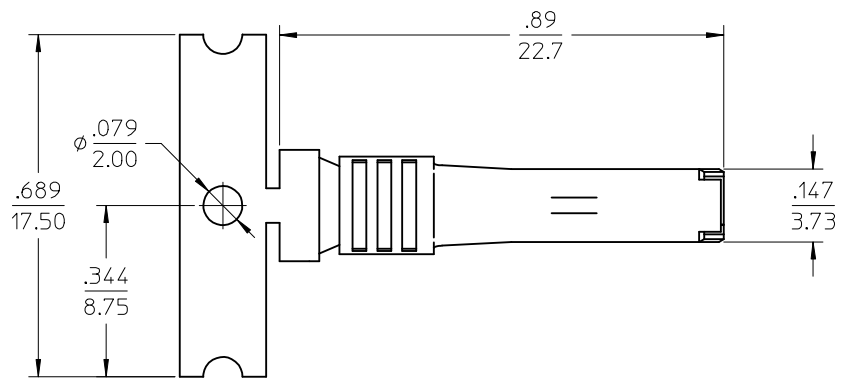
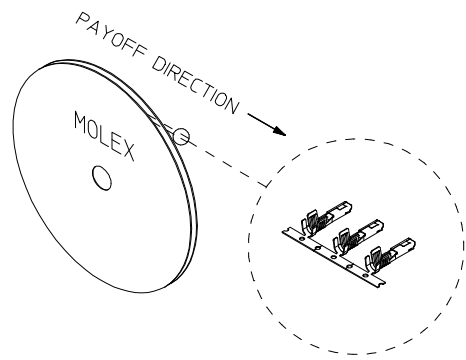
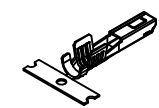
10	9	8	7	6	5	4	3	2	1
STRIP MATERIAL NUMBER	LOOSE PIECE MATERIAL NUMBER	AWG SIZE (MM <sup>2</sup> )	WIRE INSULATION DIAMETER						
194340013	194340014	12AWG TW (3.00MM <sup>2</sup> )	.122"-.134" (3.10MM-3.40MM)						



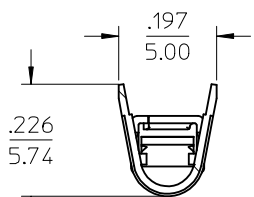
- NOTES:
1. MATERIAL: COPPER ALLOY.
  2. FINISH: PREPLATED AND REFLOWED OVERALL, 100μ TIN OVER 50μ NICKEL, MINIMUM.
  3. DO NOT USE TERMINALS WITH 19432\*\*\*\* RECEPTACLE HOUSINGS.
  4. PACKAGING SPECIFICATION: PK-19434-001 FOR LOOSE TERMINALS. STRIP PARTS ARE REELED 2500 TERMINALS PER REEL.
  5. APPLICATION TOOLING AND CRIMP SPECIFICATIONS: CONSULT FACTORY
  6. INSULATION GRIP STEP DIMENSION NOT TO BE ALTERED BY CRIMP PROCESS.
  7. ALL DIMENSIONS ARE REFERENCE.

UPDATE WIRE AWG EC NO: IPG2014-1616 DRAWN: WLEUNG 2014/03/13 CHKD: BRUPERT 2014/03/13 APPR: BWOODMAN 2014/03/20	QUALITY SYMBOLS	GENERAL TOLERANCES (UNLESS SPECIFIED)	DIMENSION STYLE	SCALE	DESIGN UNITS	THIRD ANGLE PROJECTION
	▽=0	mm INCH	IN/MM	4:1	INCH	
	▽=0	4 PLACES ± --- ± ---	DRAWN BY DATE	TITLE		
	▽=0	3 PLACES ± --- ± .010	WLEUNG 2013/12/13	FEMALE TERMINAL		
		2 PLACES ± 0.25 ± .02	CHECKED BY DATE	12AWG TW (3.0MM/2)		
		1 PLACE ± 0.5 ± ---	BRUPERT 2013/12/16	THIN WALL INSULATION		
		0 PLACE ± --- ± ---	APPROVED BY DATE	molex		
		ANGULAR ± 3°	MATERIAL NO.	DOCUMENT NO.	SHEET NO.	
		DRAFT WHERE APPLICABLE	SEE CHART	SD-19434-003	1 OF 1	
		MUST REMAIN WITHIN DIMENSIONS	SIZE B	THIS DRAWING CONTAINS INFORMATION THAT IS PROPRIETARY TO MOLEX INCORPORATED AND SHOULD NOT BE USED WITHOUT WRITTEN PERMISSION		

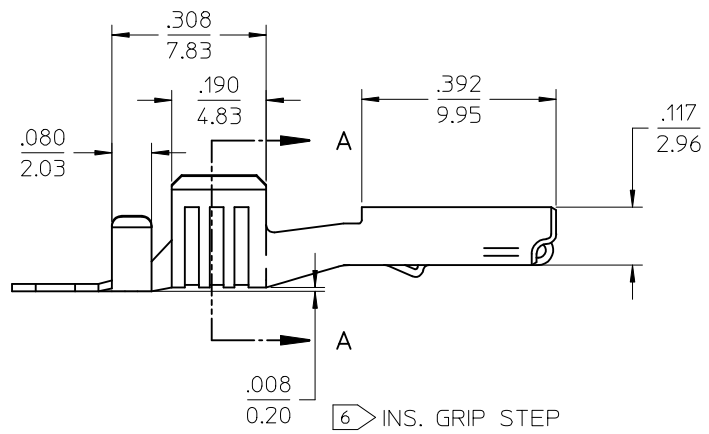
10	9	8	7	6	5	4	3	2	1
STRIP MATERIAL NUMBER	LOOSE PIECE MATERIAL NUMBER	AWG SIZE (MM <sup>2</sup> )	WIRE INSULATION DIAMETER						
194340013	194340014	12AWG TW (3.00MM <sup>2</sup> )	.122"-.134" (3.10MM-3.40MM)						



INSULATION GRIP



Section A-A  
CONDUCTOR GRIP



- NOTES:
1. MATERIAL: COPPER ALLOY.
  2. FINISH: PREPLATED AND REFLOWED OVERALL, 100μ TIN OVER 50μ NICKEL, MINIMUM.
  3. DO NOT USE TERMINALS WITH 19432\*\*\*\* RECEPTACLE HOUSINGS.
  4. PACKAGING SPECIFICATION: PK-19434-001 FOR LOOSE TERMINALS. STRIP PARTS ARE REELED 2500 TERMINALS PER REEL.
  5. APPLICATION TOOLING AND CRIMP SPECIFICATIONS: CONSULT FACTORY
  - 6 INSULATION GRIP STEP DIMENSION NOT TO BE ALTERED BY CRIMP PROCESS.
  7. ALL DIMENSIONS ARE REFERENCE.

<b>UPDATE WIRE AWG</b> EC NO: IPG2014-1616 DRAWN: WLEUNG 2014/03/13 CHKD: BRUPERT 2014/03/13 APPR: BWOODMAN 2014/03/20 B	QUALITY SYMBOLS ▽=0 ▽=0 ▽=0	GENERAL TOLERANCES (UNLESS SPECIFIED) mm INCH 4 PLACES ± --- ± --- 3 PLACES ± --- ± .010 2 PLACES ± 0.25 ± .02 1 PLACE ± 0.5 ± --- 0 PLACE ± --- ± ---	DIMENSION STYLE IN/MM DRAWN BY DATE WLEUNG 2013/12/13 CHECKED BY DATE BRUPERT 2013/12/16 APPROVED BY DATE	SCALE 4:1 DESIGN UNITS INCH THIRD ANGLE PROJECTION	TITLE <b>FEMALE TERMINAL          12AWG TW (3.0MM/2)          THIN WALL INSULATION</b> <b>molex</b>	MATERIAL NO. <b>SEE CHART</b>	DOCUMENT NO. <b>SD-19434-003</b>	SHEET NO. 1 OF 1
	ANGULAR ± 3 ° DRAFT WHERE APPLICABLE MUST REMAIN WITHIN DIMENSIONS		THIS DRAWING CONTAINS INFORMATION THAT IS PROPRIETARY TO MOLEX INCORPORATED AND SHOULD NOT BE USED WITHOUT WRITTEN PERMISSION					
	REV B							