

Distributed by:

**JAMECO**<sup>®</sup>  
ELECTRONICS

**www.Jameco.com ♦ 1-800-831-4242**

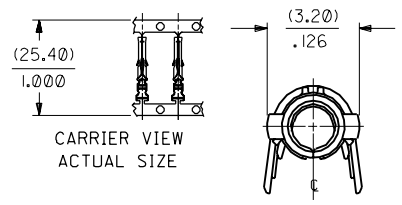
The content and copyrights of the attached  
material are the property of its owner.

**Jameco Part Number 224573 (02-06-1132-C)**

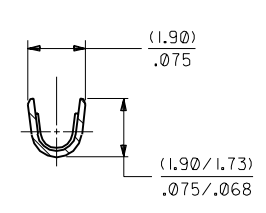
PART NO. ENG. NO.

02-06-1131	1855-(P90 I)
02-06-1132	1855-(P90 I)L
02-06-5137	1855-(P59 I)
02-06-5136	1855-(P59 I)L
02-06-5138	1855-(P56 I)
02-06-5139	1855-(P56 I)L
02-06-5130	1855-(P550)
02-06-5135	1855-(P550)L
02-06-5147	1855-(P603)
02-06-5148	1855-(P603)L
02-06-1141	1855-(P90 I)
NOT TOOLED	1855-(P90 I)L
02-06-1143	1855-(P90 I)I

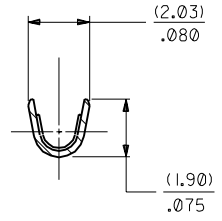
**OBSOLETE**  
**OBSOLETE**



CARRIER VIEW  
ACTUAL SIZE



SECT. "B-B"  
SCALE: 10X



SECT. "C-C"  
SCALE: 10X

**LEGEND**

1855-\*(\*\*\*\*)\*

BLANK=WITH LOCKING TABS  
I=WITHOUT LOCKING TABS

P=PREPLATE  
BLANK=POSTPLATE

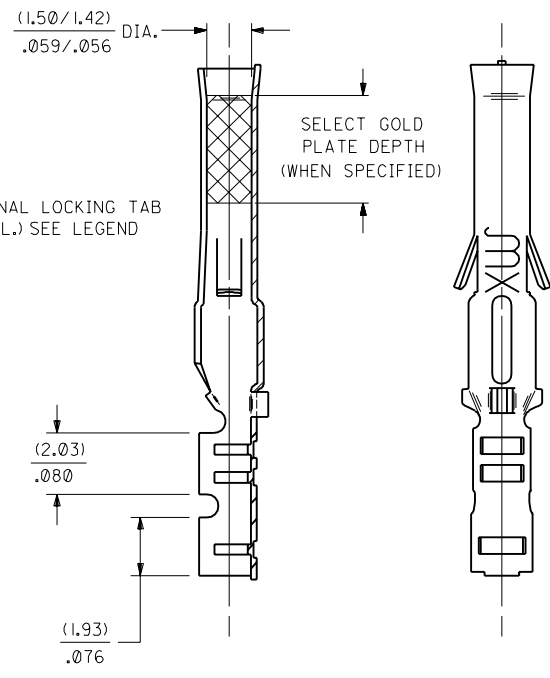
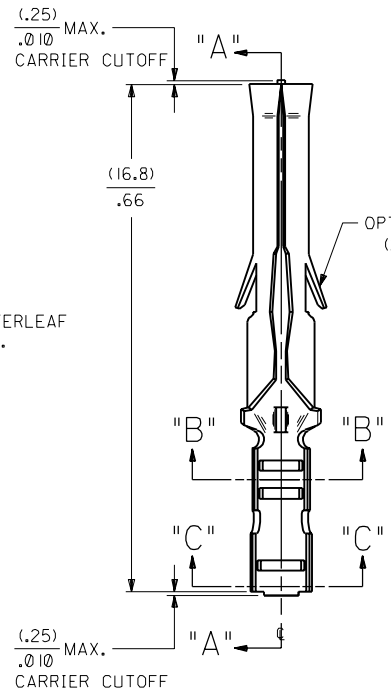
FORM  
BLANK=CHAIN  
I=CHAIN WITH INTERLEAF  
PAPER ON REEL.  
L=LOOSE  
FINISH CODE

**NOTES:**

1. TERMINAL FOR USE WITH (1.57)/.062 DIA. SERIES HOUSINGS AND WILL ACCEPT 24 THRU 30 AWG WIRE WITH (1.02/2.29)/.040/.090 INSULATION DIA.
2. THIS PART CONFORMS TO PRODUCT SPEC. 02-06.

**FINISH CODES:**

- 901 HOT TIN DIP (.00051)/.000020 MIN.
- 603 SELECT GOLD PLATE (.00076)/.000030 MIN. IN CONTACT AREA, SELECT TIN-LEAD (.00254)/.000100 MIN. IN CRIMP AREA OVER (.00127)/.000050 MIN. NICKEL OVERALL, WITH (.00025)/.000010 MAX. GOLD FLASH OVERALL.
- 561 SELECT GOLD PLATE (.00076)/.000030 MIN. IN CONTACT AREA, (.00127)/.000050 MIN. NICKEL OVERALL.
- 591 SELECT GOLD PLATE (.00127)/.000050 MIN. IN CONTACT AREA, OVER (.00127)/.000050 MIN. NICKEL OVERALL WITH (.00025)/.000010 MAX. GOLD FLASH OVERALL.
- 550 SELECT GOLD PLATE (.00038)/.000015 MIN. IN CONTACT AREA, OVER (.00076)/.000030 MIN. NICKEL OVERALL WITH (.00025)/.000010 MAX. GOLD FLASH OVERALL.



SECT. "A-A"

**MATERIAL NOTE:**

CARRIDGE BRASS, ALLOY \*C26000,  
(.20)/.008 THICK, EXTRA SPING TEMPER.

AN	OBSOLETE P/N UCR2002-0270 COMERC I 01/9/28
AMI	OBSOLETE -IP5751 & -IP5751L ECR U6 035B CXC 9/15/95 RW
AM	REV. AND REDRAWN PER ECR 10312 GEP 6-17-87 RW

DIMENSIONS SHOWN (METRIC) INCH		▽ = 0		▽ = 0		REVISE ONLY ON CAD SYSTEM	
UNLESS OTHERWISE SPECIFIED TOLERANCES ANGULAR ± 1/2°		TITLE		CRIMP TERMINAL, FEMALE (1.57)/.062 DIA., BRASS FOR 24 THRU 30 GA. WIRE		SHEET NO. DATE	
3 PLACE ± .010 ---		INCH		METRIC		MOLEX INCORPORATED U.S.A. 1 OF 1 9/17/87	
2 PLACE ± .014 ± 0.25		1 PLACE --- ± 0.35		DRAFT WHERE APPLICABLE MUST REMAIN WITHIN DIMENSIONS		PART NO. DRWG. NO.	
DRAWN BY: GEP		CHK'D BY: RW		FILE NAME: SD1855X1		DIV. CP	
APP'D BY: RAS		SCALE: 8 : 1		THIS DRAWING CONTAINS INFORMATION THAT IS PROPRIETARY TO MOLEX INC. AND SHOULD NOT BE USED WITHOUT WRITTEN PERMISSION.		SIZE	