

Distributed by:

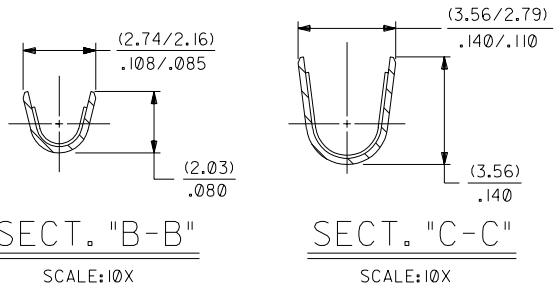
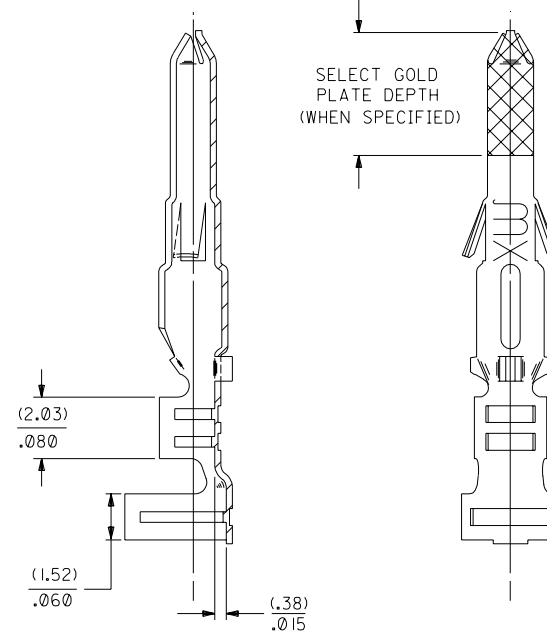
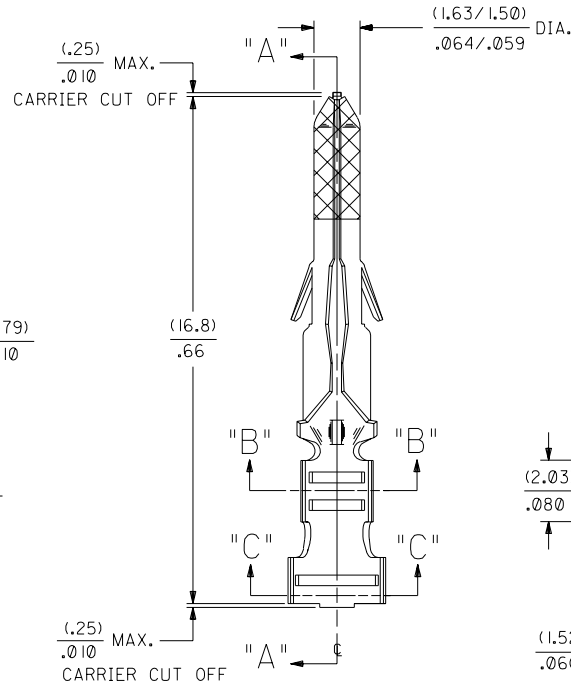
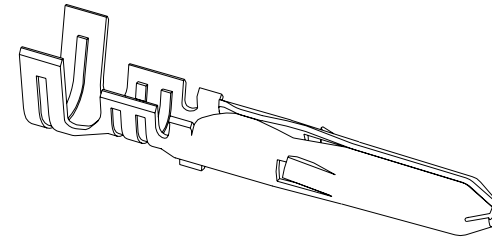
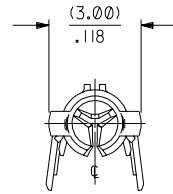
JAMECO[®]
ELECTRONICS

www.Jameco.com ♦ 1-800-831-4242

The content and copyrights of the attached
material are the property of its owner.

Jameco Part Number 224565 (02-06-2103)

PART NO.	ENG. NO.
02-06-2101	1560-(P90)I
02-06-2103	1560-(P90)IL
02-06-6101	1560-(56)I
02-06-6102	1560-(56)IL
02-06-6118	1560-(563)
02-06-6119	1560-(563)L
02-06-6116	1560-(575)
02-06-6112	1560-(575)L
02-06-6100	1560-(550)
02-06-6103	1560-(550)L
02-06-6105	1560-(59)I
02-06-6104	1560-(59)IL



SECT. "A-A"

LEGEND

1560-(****)*

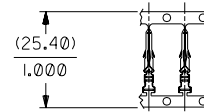
P=PREPLATE
 BLANK=POSTPLATE
 FINISH CODE
 FORM
 BLANK=CHAIN
 L=LOOSE

NOTES:

- TERMINAL FOR USE WITH (1.57)/.062 DIA. SERIES HOUSINGS AND WILL ACCEPT 18 THRU 24 AWG WIRE WITH (1.52/3.05)/.060/.120 INSULATION DIA.
- THIS PART CONFORMS TO PRODUCT SPEC. 02-06.

FINISH CODES:

- 901 HOT TIN DIP (.0005)/.000020 MIN.
- 563 SELECT GOLD PLATE (.00076)/.000030 MIN. IN CONTACT AREA, SELECT TIN-LEAD (.00254)/.000100 MIN. IN CRIMP AREA OVER (.00127)/.000050 MIN. NICKEL OVERALL.
- 575 SELECT GOLD PLATE (.00127)/.000050 MIN. IN CONTACT AREA, SELECT TIN-LEAD (.00127)/.000050 MIN. IN CRIMP AREA OVER (.00127)/.000050 MIN. NICKEL OVERALL.
- 561 SELECT GOLD PLATE (.00076)/.000030 MIN. IN CONTACT AREA, OVER (.00127)/.000050 MIN. NICKEL OVERALL.
- 591 SELECT GOLD PLATE (.00127)/.000050 MIN. IN CONTACT AREA, OVER (.00127)/.000050 MIN. NICKEL OVERALL WITH (.000025)/.000010 MAX. GOLD FLASH OVERALL.
- 550 SELECT GOLD PLATE (.00038)/.000015 MIN. IN CONTACT AREA, OVER (.00076)/.000030 MIN. NICKEL OVERALL WITH (.000025)/.000010 MAX. GOLD FLASH OVERALL.



CARRIER VIEW
ACTUAL SIZE

MATERIAL NOTE:

CARTRIDGE BRASS, ALLOY #C26000,
 (.20)/.008 THICK, EXTRA SPRING TEMPER

DIMENSIONS SHOWN (METRIC) INCH UNLESS OTHERWISE SPECIFIED TOLERANCES: ANGULAR ± 1/2°		REVISIONS																	
<table border="1"> <tr><th>INCH</th><th>METRIC</th></tr> <tr><td>3 PLACE ± .010</td><td>---</td></tr> <tr><td>2 PLACE ± .014</td><td>± 0.25</td></tr> <tr><td>1 PLACE ---</td><td>± 0.35</td></tr> </table>		INCH	METRIC	3 PLACE ± .010	---	2 PLACE ± .014	± 0.25	1 PLACE ---	± 0.35	<table border="1"> <tr><td>AO</td><td>REINSTATE 02066105 UCP2003-1827 ELHAG, 03/02/24</td></tr> <tr><td>AN</td><td>OBSOLETE P/N UCR1998-0248 COMERC 01/9/25</td></tr> <tr><td>AM1</td><td>ADDED ISO VIEW UCR1998-0248 WANG 98-05-21</td></tr> <tr><td>AM</td><td>REV. & REDRAWN PER ECR 10372 GEP 8-19-87 RW</td></tr> </table>		AO	REINSTATE 02066105 UCP2003-1827 ELHAG, 03/02/24	AN	OBSOLETE P/N UCR1998-0248 COMERC 01/9/25	AM1	ADDED ISO VIEW UCR1998-0248 WANG 98-05-21	AM	REV. & REDRAWN PER ECR 10372 GEP 8-19-87 RW
INCH	METRIC																		
3 PLACE ± .010	---																		
2 PLACE ± .014	± 0.25																		
1 PLACE ---	± 0.35																		
AO	REINSTATE 02066105 UCP2003-1827 ELHAG, 03/02/24																		
AN	OBSOLETE P/N UCR1998-0248 COMERC 01/9/25																		
AM1	ADDED ISO VIEW UCR1998-0248 WANG 98-05-21																		
AM	REV. & REDRAWN PER ECR 10372 GEP 8-19-87 RW																		
DRAFT WHERE APPLICABLE MUST REMAIN WITHIN DIMENSIONS		<table border="1"> <tr><td>MP</td><td>SH</td><td>REV</td><td>LTR.</td></tr> <tr><td></td><td></td><td></td><td></td></tr> </table>		MP	SH	REV	LTR.												
MP	SH	REV	LTR.																
<table border="1"> <tr><td>DRWG. BY</td><td>GEP</td><td>CHK'D. BY</td><td>RW</td></tr> <tr><td>APP'D. BY</td><td>RAS</td><td>SCALE</td><td>8 : 1</td></tr> </table>		DRWG. BY	GEP	CHK'D. BY	RW	APP'D. BY	RAS	SCALE	8 : 1	<table border="1"> <tr><td>FILE NAME</td><td>SD1560X1</td><td>SHEET NO.</td><td>1 OF 1</td></tr> <tr><td>DATE</td><td>8/19/87</td><td>U.S.A.</td><td></td></tr> </table>		FILE NAME	SD1560X1	SHEET NO.	1 OF 1	DATE	8/19/87	U.S.A.	
DRWG. BY	GEP	CHK'D. BY	RW																
APP'D. BY	RAS	SCALE	8 : 1																
FILE NAME	SD1560X1	SHEET NO.	1 OF 1																
DATE	8/19/87	U.S.A.																	
SEE CHART		SD-1560-*																	
THIS DRAWING CONTAINS INFORMATION THAT IS PROPRIETARY TO MOLEX INC. AND SHOULD NOT BE USED WITHOUT WRITTEN PERMISSION																			